

Product datasheet for **RC212656**

PDLIM7 (NM_203352) Human Tagged ORF Clone

Product data:

Product Type:	Expression Plasmids
Product Name:	PDLIM7 (NM_203352) Human Tagged ORF Clone
Tag:	Myc-DDK
Symbol:	PDLIM7
Synonyms:	LMP1; LMP3
Mammalian Cell Selection:	Neomycin
Vector:	pCMV6-Entry (PS100001)
E. coli Selection:	Kanamycin (25 ug/mL)



[View online »](#)

ORF Nucleotide Sequence:

>RC212656 representing NM_203352
 Red=Cloning site Blue=ORF Green=Tags(s)

TTTTGTAATACGACTCACTATAGGGCGGCCGGAATTCGTCGACTGGATCCGGTACCGAGGAGATCTGCC
 GCCCGCATCGCC

ATGGATTCCTCAAAGTAGTGCTGGAGGGCCAGCACCTTGGGGCTTCCGGCTGCAAGGGGCAAGGACT
 TCAATGTGCCCTCTCCATTTCCGGCTCACTCTGGGGCAAAGCGGCCAGGCCGGAGTGGCCGTGGG
 TGAATGGGTGCTGAGCATCGATGGCGAGAATGCGGGTAGCCTCACACACATCGAAGCTCAGAACAAGATC
 CGGGCCTGCGGGGAGCGCCTCAGCCTGGGCCTCAGCAGGGCCAGCCGGTTAGAGCAAACCGCAGAAGG
 TGCAGACCCCTGACAAACAGCCGCTCCGACCGCTGGTCCAGATGCCAGCAAGCAGCGGCTGATGGAGAA
 CACAGAGGACTGGCGGCCGCGCCGGGGACAGGCCAGTCGCGTTCCTTCCGCATCCTTGCCACCTCACA
 GGCACCGAGTTTCAAGACCCGGATGAGGAGCACCTGAAGAAATCAAGCCAGGTGCCAGGACAGAAG
 CCCCAGCCCCAGCCTCATCTACACCCAGGAGCCCTGGCCTGGCCCTACCGCCCCAGCCCTACCAGCCG
 CCCGCCCTGGGCTGTGGACCCTGCGTTTCCGAGCGCTATGCCCGGACAAAACGAGCACAGTGTGACC
 CGGCACAGCCAGCCGCCACGCCACGCCGCTGCAGAGCCGCACCTCCATTGTGCAGGCAGCTGCCGGAG
 GGGTGCCAGGAGGGGCAAGCAACACGGCAAGACTCCCCTGTGTACCAGTGCCACAAGGTCATCCGGGG
 CCGCTACCTGGTGGCGCTGGGCCACGCTACCACCCGGAGGATTTGTGTGTAGCCAGTGTGGGAAGGTC
 CTGGAAGAGGGTGGCTTCTTTGAGGAGAAGGGCGCCATCTTTCGCCACCATGCTATGACGTGCGTATG
 CACCCAGCTGTGCCAAGTGAAGAAGAAGATTACAGGCGAGATCATGCACGCCCTGAAGATGACCTGGCA
 CGTGCAGTGTACCTGTGCTGCTGCAAGACGCCATCCGGAACAGGGCCTTCTACATGGAGGAGGGC
 GTGCCCTATTGCGAGCGAGACTATGAGAAGATGTTTGGCACGAAATGCCATGGCTGTGACTTCAAGATCG
 ACGCTGGGACCCGCTTCTGGAGGCCCTGGGCTTCAGCTGGCATGACACCTGCTTCGTCTGTGCGATATG
 TCAGATCAACCTGGAAGGAAAGACCTTCTACTCCAAGAAGGACAGGCCTCTCTGCAAGGCCATGCCTTC
 TCTCATGTG

AGCGGACCGACGCGTACGCGGCCGCTCGAGCAGAACTCATCTCAGAAGAGGATCTGGCAGCAAATGATATCC
 TGGATTACAAGGATGACGACGATAAGGTTAA

Protein Sequence:

>RC212656 representing NM_203352
 Red=Cloning site Green=Tags(s)

MDSFKVLEGPAPWGFRLQGGKDFNVPLSISRLTPGGKAAQAGVAVGDWVLSIDGENAGSLTHIEAQNKI
 RACGERLSLGLSRAQPVSQKPKVQTPDKQPLRPLVPDASKQRLMENTEDWRPRPGTGQSRFRILAHLT
 GTEFMQDPDEEHLKSSQVPRTEAPAPASSTPQEPWPGPTAPSPTRPPWAVDPFAERYAPDKTSTVLT
 RHSQPATPTPLQSRTSIVQAAAGGVPGGSSNNGKTPVCHQCHKVIRGRYLVALGHAYHPEEFVCSQCGKV
 LEEGGFFEEKGAIFCPPCYDVRYAPSCAKCKKITGEIMHALKMTWHVHCFTCAACKTPIRNRIFYMEEG
 VPYICERDYEKMFGTKCHGCDFKIDAGDRFLEALGFSWHDTCFVCAICQINLEGKTFYSKDRPLCKSHAF
 SHV

SGPTRRRLRLEQKLISEEDLAANDILDYKDDDDKV

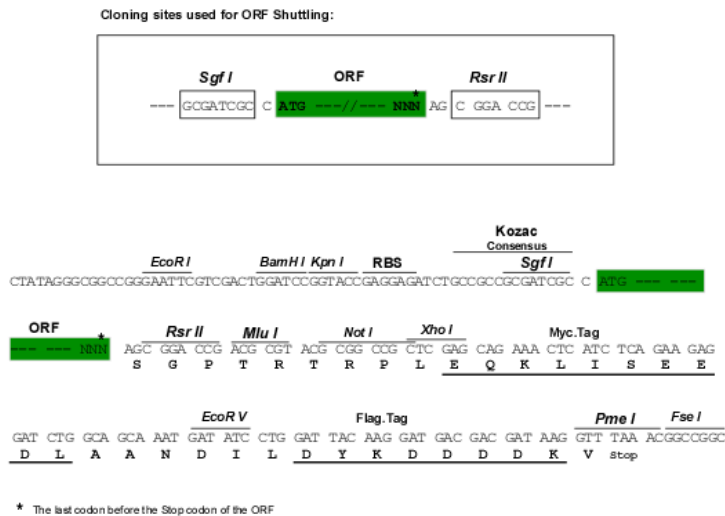
Chromatograms:

https://cdn.origene.com/chromatograms/mk8023_f03.zip

Restriction Sites:

Sgfl-RsrII

Cloning Scheme:



ACCN: NM_203352

ORF Size: 1269 bp

OTI Disclaimer: The molecular sequence of this clone aligns with the gene accession number as a point of reference only. However, individual transcript sequences of the same gene can differ through naturally occurring variations (e.g. polymorphisms), each with its own valid existence. This clone is substantially in agreement with the reference, but a complete review of all prevailing variants is recommended prior to use. [More info](#)

OTI Annotation: This clone was engineered to express the complete ORF with an expression tag. Expression varies depending on the nature of the gene.

Components: The ORF clone is ion-exchange column purified and shipped in a 2D barcoded Matrix tube containing 10ug of transfection-ready, dried plasmid DNA (reconstitute with 100 ul of water).

Reconstitution Method:

1. Centrifuge at 5,000xg for 5min.
2. Carefully open the tube and add 100ul of sterile water to dissolve the DNA.
3. Close the tube and incubate for 10 minutes at room temperature.
4. Briefly vortex the tube and then do a quick spin (less than 5000xg) to concentrate the liquid at the bottom.
5. Store the suspended plasmid at -20°C. The DNA is stable for at least one year from date of shipping when stored at -20°C.

RefSeq: [NM_203352.3](#)

RefSeq Size: 1607 bp

RefSeq ORF: 1272 bp

Locus ID: 9260

UniProt ID: [Q9NR12](#)

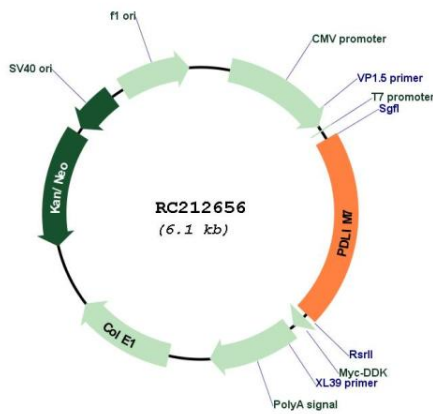
Cytogenetics: 5q35.3

Protein Families: Druggable Genome

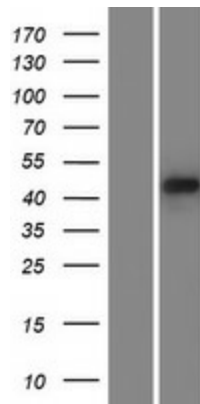
MW: 46.3 kDa

Gene Summary: The protein encoded by this gene is representative of a family of proteins composed of conserved PDZ and LIM domains. LIM domains are proposed to function in protein-protein recognition in a variety of contexts including gene transcription and development and in cytoskeletal interaction. The LIM domains of this protein bind to protein kinases, whereas the PDZ domain binds to actin filaments. The gene product is involved in the assembly of an actin filament-associated complex essential for transmission of ret/ptc2 mitogenic signaling. The biological function is likely to be that of an adapter, with the PDZ domain localizing the LIM-binding proteins to actin filaments of both skeletal muscle and nonmuscle tissues. Alternative splicing of this gene results in multiple transcript variants. [provided by RefSeq, Jul 2008]

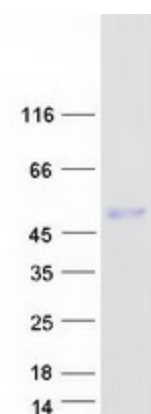
Product images:



Circular map for RC212656



Western blot validation of overexpression lysate (Cat# [LY404299]) using anti-DDK antibody (Cat# [TA50011-100]). Left: Cell lysates from untransfected HEK293T cells; Right: Cell lysates from HEK293T cells transfected with RC212656 using transfection reagent MegaTran 2.0 (Cat# [TT210002]).



Coomassie blue staining of purified PDLIM7 protein (Cat# [TP312656]). The protein was produced from HEK293T cells transfected with PDLIM7 cDNA clone (Cat# RC212656) using MegaTran 2.0 (Cat# [TT210002]).