

Product datasheet for RC212652

Synaptotagmin VII (SYT7) (NM_004200) Human Tagged ORF Clone

Product data:

Product Type:	Expression Plasmids
Product Name:	Synaptotagmin VII (SYT7) (NM_004200) Human Tagged ORF Clone
Tag:	Myc-DDK
Symbol:	Synaptotagmin VII
Synonyms:	IPCA-7; IPCA7; PCANAP7; SYT-VII; SYTVII
Mammalian Cell Selection:	Neomycin
Vector:	pCMV6-Entry (PS100001)
E. coli Selection:	Kanamycin (25 ug/mL)
ORF Nucleotide Sequence:	>RC212652 representing NM_004200 Red=Cloning site Blue=ORF Green=Tags(s)

TTTTGTAATACGACTCACTATAGGGCGGCCGGAATTCGTCGACTGGATCCGGTACCGAGGAGATCTGCC
GCC**CGATCGCC**

ATGTACCGGGACCCGGAGGCGGCCAGCCAGGGGCGCCCTCGCGCGACGTCTGCTGGTCTCTGCCATCA
TCACCGTCAGCCTTAGCGTCACTGTCTGCTCTGCGGCCCTGCCACTGGTGTGACGCGAAACTGGGCAA
ACGCTACAAGAATTCCTTGGAGACGGTGGGCACGCCAGACTCAGGGCGTGGGCGCAGTGAGAAGAAGGCT
ATCAAGTTGCCTGCAGGAGGGAAGGCGGTGAACACAGCCCCCGTCCAGGCCAGACACCCACGATGAGT
CCGACCGCGGACCGAGCCACGTTCTCCTCGTCTCAGACCTCGTCAACTCCCTACCAGCGAGATGCTCAT
GCTCTCCCAGGCTCCGAGGAGGATGAGGCCACGAGGGTTGCAGCCGAGAGAACCTGGGCGGATCCAG
TTCAGTGTCCGGTACAACCTCCAGGAGTCCACGCTCACCGTGAAGATCATGAAGGCCAGGAGCTGCCGG
CCAAGGACTTCAGCGGCACCAGCGACCCCTTCGTCAAGATCTACCTGCTGCCCGACAAGAAGCACAAAGT
GGAGACCAAGGTGAAGCGGAAGAACCTGAACCCCACTGGAACGAGACCTTCTCTTTGAAGTTTTCCC
TATGAGAAGGTGGTGCAGAGGATCCTCTACCTCCAAGTCTGGACTATGACCGTTCAGCCGCAACGACC
CCATTGGGAGGTGTCCATCCCCCTTAAACAAGTGGACCTGACCCAGATGCAGACCTTCTGGAAGGATCT
GAAGCCATGCAGCGATGGGAGTGGGAGCCGAGGGGAGCTGCTCTGTCTCTGCTACAACCCCTCTGCC
AACTCCATCATCGTGAACATCATCAAAGCCCGAACCTCAAAGCCATGGACATCGGGGGCACATCAGACC
CCTACGTGAAGGTATGGCTGATGTACAAGGACAAGCGGGTGGAGAAGAAGAAGACGGTGACGATGAAGAG
GAACCTGAACCCATCTTCAATGAGTCTTCGCTTCGATATCCCCACGAGAAGCTGAGGGAGACGACC
ATCATCATCACTGTATGGACAAGGACAAGCTCAGCCGAATGACGTCATCGGCAAGATCTACCTGTCT
GGAAGAGCGGGCCAGGGGAGGTGAAGCACTGGAAGGACATGATTGCCCGTCCCCGGCAGCCCGTGGCCCA
GTGGCACCAGCTGAAGGCC

ACGGTACGCGGCCGCTCGAGCAGAACTCATCTCAGAAGAGGATCTGGCAGCAAATGATATCTGGATT
ACAAGGATGACGACGATAAGGTTTAA



[View online >](#)

Protein Sequence: >RC212652 representing NM_004200
Red=Cloning site Green=Tags(s)

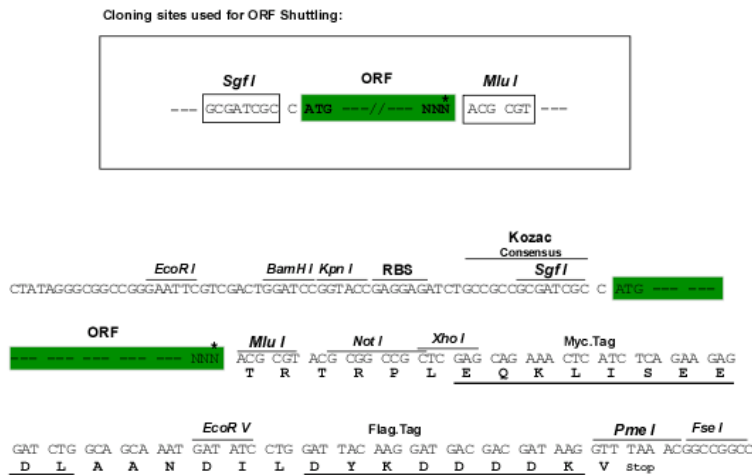
MYRDPEAASPGAPSRDVLVLSAIIIVSLSVTVVLCGLCHWCQRKLGKRYKNSLETVGTDPDSGRGRSEKKA
 IKLPAGGKAVNTAPVPGQTPHDESDRRTEPRSSVSDLVNSLTSEMLMLSPGSEEDAHEGCSRENLGRIQ
 FSVGYNFQESTLTVKIMKAQELPAKDFSGTSDPFVKIYLLPDKKHKLETKVKKRNLNPHWNETFLFEGFP
 YEKVVQRILYLQVLDYDRFSRNDPIGEVSIPLNKVDLTQMOTFWKDLKPCSDGSGSRGELLLSLCYNPSA
 NSIIVNIIKARNLKAMDIGGTSDPYVKVWLMYKDKRVEKKKTVTMKRNLNPIFNESFAFDIPTEKLRRETT
 IITVMDKDKLSRNDVIGKIYLSWKS GPGEVKHWKDMIARPRQPVAQWHQLKA

TRTRPLEQKLISEEDLAANDILDYKDDDDKV

Chromatograms: https://cdn.origene.com/chromatograms/mk6094_a10.zip

Restriction Sites: SgfI-MluI

Cloning Scheme:



* The last codon before the Stop codon of the ORF

ACCN: NM_004200

ORF Size: 1209 bp

OTI Disclaimer: The molecular sequence of this clone aligns with the gene accession number as a point of reference only. However, individual transcript sequences of the same gene can differ through naturally occurring variations (e.g. polymorphisms), each with its own valid existence. This clone is substantially in agreement with the reference, but a complete review of all prevailing variants is recommended prior to use. [More info](#)

OTI Annotation: This clone was engineered to express the complete ORF with an expression tag. Expression varies depending on the nature of the gene.

Components: The ORF clone is ion-exchange column purified and shipped in a 2D barcoded Matrix tube containing 10ug of transfection-ready, dried plasmid DNA (reconstitute with 100 ul of water).

- Reconstitution Method:**
1. Centrifuge at 5,000xg for 5min.
 2. Carefully open the tube and add 100ul of sterile water to dissolve the DNA.
 3. Close the tube and incubate for 10 minutes at room temperature.
 4. Briefly vortex the tube and then do a quick spin (less than 5000xg) to concentrate the liquid at the bottom.
 5. Store the suspended plasmid at -20°C. The DNA is stable for at least one year from date of shipping when stored at -20°C.

RefSeq: [NM_004200.3](#)

RefSeq Size: 4609 bp

RefSeq ORF: 1212 bp

Locus ID: 9066

UniProt ID: [O43581](#)

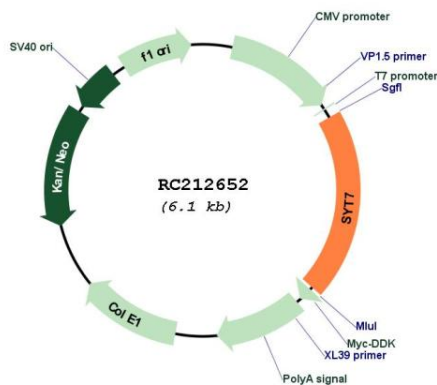
Cytogenetics: 11q12.2

Protein Families: Secreted Protein, Transmembrane

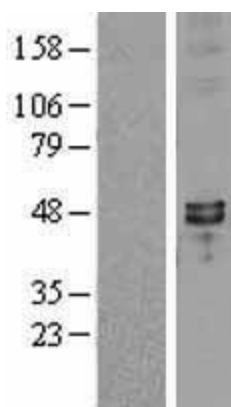
MW: 45.3 kDa

Gene Summary: This gene is a member of the synaptotagmin gene family and encodes a protein similar to other family members that mediate calcium-dependent regulation of membrane trafficking in synaptic transmission. A similar protein in rodents mediates hormone secretion and lysosome exocytosis. In humans, expression of this gene has been associated with prostate cancer. Alternatively spliced transcript variants encoding multiple isoforms have been observed for this gene. [provided by RefSeq, Oct 2011]

Product images:



Circular map for RC212652



Western blot validation of overexpression lysate (Cat# [LY401350]) using anti-DDK antibody (Cat# [TA50011-100]). Left: Cell lysates from untransfected HEK293T cells; Right: Cell lysates from HEK293T cells transfected with RC212652 using transfection reagent MegaTran 2.0 (Cat# [TT210002]).