

Product datasheet for RC212640

MCF2L2 (NM_015078) Human Tagged ORF Clone

Product data:

Product Type:	Expression Plasmids
Product Name:	MCF2L2 (NM_015078) Human Tagged ORF Clone
Tag:	Myc-DDK
Symbol:	MCF2L2
Synonyms:	ARHGEF22
Mammalian Cell Selection:	Neomycin
Vector:	pCMV6-Entry (PS100001)
E. coli Selection:	Kanamycin (25 ug/mL)
ORF Nucleotide Sequence:	>RC212640 representing NM_015078 Red=Cloning site Blue=ORF Green=Tags(s)

TTTTGTAATACGACTCACTATAGGGCGGCCGGAATTCGTCGACTGGATCCGGTACCGAGGAGATCTGCC
GCC**CGATCGCC**

ATGCTGTCTTGCTTAAAAGAAGAGATGCCTCCCCAGGAGCTCACCCGGCGACTGGCCACAGTGATCACTC
ATGTCGATGAAATTATGCAGCAGGAAGTCAGACCCCTGATGGCGGTGGAGATAATAGAACAACCTTCACAG
ACAATTTGCCATTCTTTAGGAGGCCGAGGGGAGGATGGCGCCCCATCATCACGTTCCAGAGTTTTCG
GGGTTCAAACACATCCCAGATGAAGACTTCTGAATGTCATGACCTACCTGACTAGCATCCCCAGTGTGG
AGGCTGCCAGCATTGGATTCATTGTTGTTATCGACAGACGAAGAGACAAGTGGAGCTCCGTAAGGCATC
CTTGACACGAATAGCTGTGGCATTTCAGGAACTTACAGCTCATATTCACTCCTTCGTCATCTCGCTTT
ATCCAGAGGACATTCACTGACATTGGCATTAAATACTATCGAAATGAGTTTAAAACGAAAGTGCCGATCA
TCATGGTAAACTCTGTCTCTGACCTTACCGGCTACATCGACAAAAGCCAACCTGACCCGGGAATTAGGGGG
GACTTTGGAAATACGCCACGGTCAGTGGGTAATCACCGCACTGCCATCGAAAACCTTTCGCTTGACCTTG
AAGACCACTGCCAGATGCTGCAGACGTTTGGGTCCTGCCTGGCCACAGCAGAGCTGCCAGAAGCATGC
TATCCACGGAAGACCTTCTCATGTCCCACACAAGGCAGCGGACAAGCTGCAGGATGAGCTGAAATTACT
TGGAAAGCAGGGGACCACATTGCTGTATGCATCCAAGAACCAGCAACCAATGTCCCAACAGCAAACCTC
AATCTCAACCAACTTGAGAATGTAACCTACCATGGAAAGGTTATTAGTTCAACTGGATGAAACAGAAAAAG
CCTTTAGTCACTTTTGGTCTGAGCATCATCTGAAGCTTAACCAAGTGCCTACAACCTACAGCATTGAGCA
CGATTTTTGTAAGGCTAAGCTTGGCCTGGATAATTTGCTGGAAGAGCAAGCAGAGTTTACAGGCATTGGA
GACAGCGTGATGCACGTGGAGCAGATTCTTAAGGAACACAAAAAAGCTGGAGGAAAAAGCCAGGAGCCCC
TGGAAAAGGCCAGCTGCTGGCACTGGTTGGGGACCAGCTCATCAAAGCCACCATATGCAGCAGATGC
CATCAGGCCCCGGTGTGTGGAGCTCAGGCACCTCTGTGACGATTTTCAATGAAACAAGAAAAATGG
GACATTTTAGGAAAGTCCTTAGAGTTTTCATAGACAGCTGGACAAGGTGAGCAATGGTGTGAGGCAGGAA
TCTACCTCTTGGCTTCCCAAGCTGTAGACAAGTGCCAGTCTCGAGAAGGGGTTGATATCGCCTTGAACGA
CATTGCGACATTCCTGGGCACAGTCAAGGAGTACCGTGGCTCAGCCCCAAGGAGTTTACAACGAGTTT



GAGTTGCTGCTCACCCCTCGATGCAAAGGCCAAAGCCCAGAAAGTTTTGCAGAGGCTGGATGATGTCCAGG
 AAATATTTACAAGAGGCAAGTGAAGTCTGATGAACTGGCAGCCAAACAGACTCGTCCAGTGCAACCTGT
 GGCCCCACATCCTGAGTCTTACCAAAAATGGGTGTCATCAAAAACAGCCAGCCCTCCACCTCGTCCCT
 CTAGCTCGTCTCTGAGAAGCTGTGAGGAACCTTATACGGAGACAGAGTTGAACTCCCGGGGAAAGGAAG
 ATGATGAGACTAAATTTGAAGTCAAGAGTGAAGAAATCTTTGAAAGCCATCATGAAAGGGGAAACCTGA
 GCTGGAGCAGCAGGCCAGGCTCGGAGACCTTCCCCCGCAGGCGCATTATACGTGACTTGTCTGAGACT
 GAAGAGATTTACATAAAAGAGATTAAGAGCATAATTGATGGATATATCACTCCAATGGATTTTATTGGC
 TAAAGCATCTAATTCCAGATGTTCTTCAAGATAACAAGGACTTTCTTTGGGAATTATTAGAGAACCTTTA
 CGAATTTCAACAACAGGACTTTTCTAAAAGAGTTGAAAAGTGTGCTGAGAACCCTGAACTTCTGGCACAT
 TGCTTTCTCAAGAGAAAAGAAGATCTTTCAGATATATTTTAAATACCATAAGAATCTGCCCGAGCTAGGG
 CAATCTGGCAAGAGTGTCAAGACTGCGCTACTTTGGGTATGCCAGCGCCAAGTGGATCACAATCTCCC
 TCTTTTTAAGTATCTCAAAGGACCAAGCCAGAGACTTATAAAATACCAGATGCTGTTGAAGGGTCTGCTG
 GATTTTCGAGTCTCCTGAAGATATGGAGATAGACCCAGGTGAACTAGGAGGCTCGGCTAAGGATGGCCAA
 AGAGAACCAAAGATTGAGCATTCTCAACTGAACTACAACAAGCTTTGGCAGTGATAGAGGATTTGATCAA
 GTCTGTGAGTTGGCTGTGGACCTAGCAGCAGTACTGAATGTCCGGACGATATTGAAAACCTAGGCAAG
 CTGTTGCTGCACGGCCCTTTCAGCGTCTGGACAATTCACAAGGATCGTTATAAAATGAAGGATTTGATTC
 GATTTAAACCCAGCCAGAGGCAAATCTACCTATTTGAAAGGGGAATAGTGTCTGTAAGATACGAATGGA
 GCCTGGGGACAGGGATTATCTCCTCATTACAGCTTCAAGAAGACCATGAAGCTGATGACTTTCAATT
 CGCCAGCTTGAAGGGGGAGCCATAGAAAGTTTGAGATTGCCAGTCGAAATGGACTTGAGAAATACATCC
 TGCAGGCAGCTTCAAAGAAATCAGAGACTGTTGGTTTTGAGAAATAAGTAAATATTGATGGAACAACA
 AAATAATCAAAGACCAAGGAAATCCACAGTTTGAATGAGCACGAGCAAAGGCAGTGGAGCAGGATCC
 GGACATGGATTAATAATGGAAGAGCTACCACTAGCAAGGAAGACCCGGCTCCAGCACAGGAGGGA
 TTAAGAGCTGCTCCAGCAGGGAGTTTACTCCTGACACCTTTGAAAGACTGTGAAGGCGCAGAAGACAT
 GGAAAAGGAGAGCAGTGTCTGAGTCTCGCGGGCCTTTTCCAGTCCGACGACAGTCAAGAACCTGTTCC
 TCCAAATCTGCTTCTGAGAGGGGAGAAAGCAGCCAGGGAGAAAAAGAAACGCGATGAGGAGGAAA
 CGGCGACCCGAGCACCAGGAGGAGCGCGCTGGGGCGTCCACGGGCGGCTGGCTCCTGCGGGGCGAC
 GGCTGTTTCCAGGCGAGGGCGCTGCGCCGAGGACCTCCGCCAGGAGAGC

ACGCGTACGCGGGCCGCTCGAGCAGAAACTCATCTCAGAAGAGGATCTGGCAGCAAATGATATCCTGGATT
 ACAAGGATGACGACGATAAGGTTTAA

Protein Sequence:

>RC212640 representing NM_015078
 Red=Cloning site Green=Tags(s)

MLSCLKEEMPPQELTRRLATVITHVDEIMQQEVRPLMAVEIIEQLHRQFMAILSGGRGEDGAPIITFPEFS
 GFKHIPDEDFLNVMTYLTSPSVEAASIGFIVVIDRRRDKWSSVKASL TRIAVAFPGNLQLIFILRPSRF
 IQRTFTDIGIKYRNEFKTKVPIIMVNSVSDLHGVIDKSQLTRELGGTLEYRHGQWVNHRTAIENFALTL
 KTTAQMLQTFGSCLATAELPRSMSTEDLLMSHTRQRDKLQDELKLLGKQGTLLSCIQEPATKCPNSKL
 NLNQLENVTTMERLLVQLDETEKAFSHFWEHHLKLNQCLQLQHFHDFCKAKLALDNLLEEQAETF
 GIGDSVMHVEQILKEHKKLEEKSQEPELEKALLALVGDQLIQSHHYAADAIRPRCVELRHLCDDFINGNKKK
 W DILGKSLFEHRQLDKVSQWCEAGIYLLASQAVDKQSREGVDIALNDIATFLGTVKEYPLLSPKEFYNEF
 ELLLTLDAKAKAQVLRQLDDVQEIFHQRQVSLMKLAQKTRPVQPVAPHPESSPKWSSKTSQPSTSV
 P LARPLRTEEPYTETELNSRGKEDDETKFEVKEEIEFESHHERGNPELEQQARLDLSPRRRIIRDLET
 EEIYIKEIKSIIDGYITPMDFIWLKHLIPDVLQNNKDFLFGNIRELYEFHNRTFLKELEKCAENPELLAH
 CFLKRKEDLQIYFKYHKNLPRARAIWQECQDCAYFGVCQRQLDHNLPFKYLKGPSQRLIKYQMLLKGLL
 DFESPEDMEIDPGELEGSAKDGPKRKDSAFSTELQQALAVIEDLIKSCELAVDLAAVTECPDDIGKLGK
 LLLHGPFSVWTIHKDRYKMKDLIRFKPSQRQIYLFERGIYVFKIRMPEPGDQGLSPHYSFKKTMKMLTSLI
 RQLGRGSHRKFIEASRNLEKYILQAASKEIRDCWFSEISKLLMEQQNNIKDQGNPQFEMSTSKGSGAGS
 GPWIKNMERATTSKEDPASSTGGIKGCSREFSSMDTFEDCEGAEDMEKESALSAGLQSDDSHETCS
 SKSAFLERGESQGEKEERDEEETATRSTEEERAGASTGRLAPAGATAGFQARALRPRTSAQES

TRTRPLEQKLISEEDLAANDILDYKDDDDKV

RefSeq ORF: 3345 bp

Locus ID: 23101

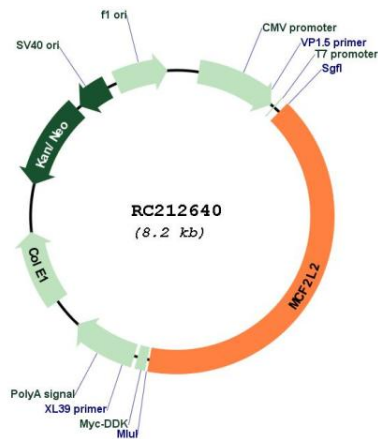
UniProt ID: [Q86YR7](#)

Cytogenetics: 3q27.1

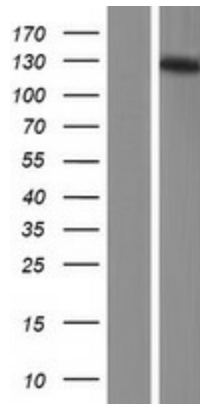
MW: 126.8 kDa

Gene Summary: Probably functions as a guanine nucleotide exchange factor.[UniProtKB/Swiss-Prot Function]

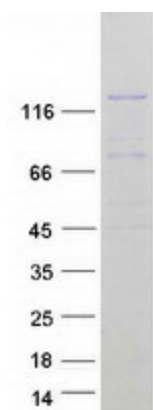
Product images:



Circular map for RC212640



Western blot validation of overexpression lysate (Cat# [LY414816]) using anti-DDK antibody (Cat# [TA50011-100]). Left: Cell lysates from untransfected HEK293T cells; Right: Cell lysates from HEK293T cells transfected with RC212640 using transfection reagent MegaTran 2.0 (Cat# [TT210002]).



Coomassie blue staining of purified MCF2L2 protein (Cat# [TP312640]). The protein was produced from HEK293T cells transfected with MCF2L2 cDNA clone (Cat# RC212640) using MegaTran 2.0 (Cat# [TT210002]).