

Product datasheet for RC212637

DDT (NM_001084392) Human Tagged ORF Clone

Product data:

Product Type: Expression Plasmids
Product Name: DDT (NM_001084392) Human Tagged ORF Clone
Tag: Myc-DDK
Symbol: DDT
Synonyms: D-DT; DDCT; MIF-2; MIF2
Mammalian Cell Selection: Neomycin
Vector: pCMV6-Entry (PS100001)
E. coli Selection: Kanamycin (25 ug/mL)
ORF Nucleotide Sequence: >RC212637 ORF sequence
Red=Cloning site Blue=ORF Green=Tags(s)

TTTTGTAATACGACTCACTATAGGGCGCCGGAATTCGTCGACTGGATCCGGTACCGAGGAGATCTGCC
GCC**CGGATCGCC**

ATGCCGTTCTGGAGCTGGACACGAATTTGCCCGCAACCGAGTGCCCGGGGGCTGGAGAAACGACTCT
GCGCCGCCGCTGCCTCCATCCTGGGCAAACCTGCGGACCGCGTGAACGTGACGGTACGGCCGGCCCTGGC
CATGGCGCTGAGCGGGTCCACCGAGCCCTGCGCGCAGCTGTCCATCTCTCCATCGGCGTAGTGGGCACC
GCCGAGGACAACCGCAGCCACAGCGCCCACTTCTTTGAGTTTCTACCAAGGAGCTAGCCCTGGGCCAGG
ACCGGATACTTATCCGCTTTTTCCCTTGGAGTCTGGCAGATTGGCAAGATAGGACGGTCATGACTTT
TTTA

ACGCGTACGCGGCCGCTCGAGCAGAAACTCATCTCAGAAGAGGATCTGGCAGCAAATGATATCCTGGATT
ACAAGGATGACGACGATAAGGTTTAA

Protein Sequence: >RC212637 protein sequence
Red=Cloning site Green=Tags(s)
MPFLELDTNLPANRVPAGLEKRLCAAAASILGKPADRVNVTVRPGLAMALSGSTEPCAQLSISSIGVVG
AEDNRSHSAHFLEFLTKELALGQDRILIRFFPLESWQIGKIGVTMTFL

TRTRPLEQKLISEEDLAANDILDYKDDDDKV

Chromatograms: https://cdn.origene.com/chromatograms/mk6309_d03.zip

Restriction Sites: SgfI-MluI



[View online »](#)

Cloning Scheme:


ACCN: NM_001084392

ORF Size: 354 bp

OTI Disclaimer: The molecular sequence of this clone aligns with the gene accession number as a point of reference only. However, individual transcript sequences of the same gene can differ through naturally occurring variations (e.g. polymorphisms), each with its own valid existence. This clone is substantially in agreement with the reference, but a complete review of all prevailing variants is recommended prior to use. [More info](#)

OTI Annotation: This clone was engineered to express the complete ORF with an expression tag. Expression varies depending on the nature of the gene.

Components: The ORF clone is ion-exchange column purified and shipped in a 2D barcoded Matrix tube containing 10ug of transfection-ready, dried plasmid DNA (reconstitute with 100 ul of water).

- Reconstitution Method:**
1. Centrifuge at 5,000xg for 5min.
 2. Carefully open the tube and add 100ul of sterile water to dissolve the DNA.
 3. Close the tube and incubate for 10 minutes at room temperature.
 4. Briefly vortex the tube and then do a quick spin (less than 5000xg) to concentrate the liquid at the bottom.
 5. Store the suspended plasmid at -20°C. The DNA is stable for at least one year from date of shipping when stored at -20°C.

Note: Plasmids are not sterile. For experiments where strict sterility is required, filtration with 0.22um filter is required.

RefSeq: [NM_001084392.3](#)

RefSeq Size: 637 bp

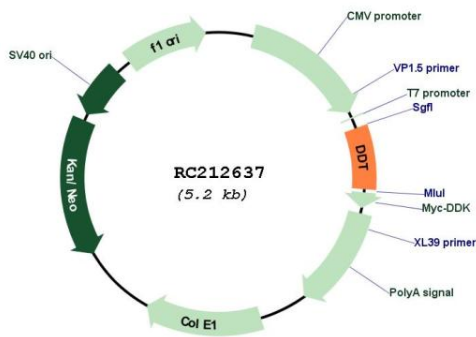
RefSeq ORF: 357 bp

Locus ID: 1652
UniProt ID: [P30046](#)
Cytogenetics: 22q11.23

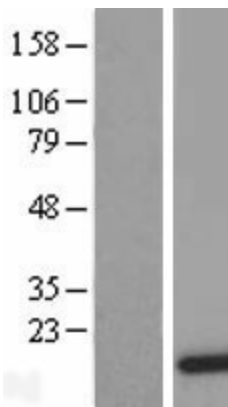
MW: 12.7 kDa

Gene Summary: D-dopachrome tautomerase converts D-dopachrome into 5,6-dihydroxyindole. The DDT gene is related to the migration inhibitory factor (MIF) in terms of sequence, enzyme activity, and gene structure. DDT and MIF are closely linked on chromosome 22. [provided by RefSeq, Jul 2008]

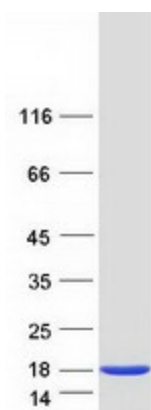
Product images:



Circular map for RC212637



Western blot validation of overexpression lysate (Cat# [LY421266]) using anti-DDK antibody (Cat# [TA50011-100]). Left: Cell lysates from untransfected HEK293T cells; Right: Cell lysates from HEK293T cells transfected with RC212637 using transfection reagent MegaTran 2.0 (Cat# [TT210002]).



Coomassie blue staining of purified DDT protein (Cat# [TP312637]). The protein was produced from HEK293T cells transfected with DDT cDNA clone (Cat# RC212637) using MegaTran 2.0 (Cat# [TT210002]).