

Product datasheet for **RC212634**

GGTLC1 (NM_178311) Human Tagged ORF Clone

Product data:

Product Type: Expression Plasmids
Product Name: GGTLC1 (NM_178311) Human Tagged ORF Clone
Tag: Myc-DDK
Symbol: GGTLC1
Synonyms: dj831C21.1; dj831C21.2; GGTL6; GGTLA3; GGTLA4
Mammalian Cell Selection: Neomycin
Vector: pCMV6-Entry (PS100001)
E. coli Selection: Kanamycin (25 ug/mL)
ORF Nucleotide Sequence: >RC212634 representing NM_178311
Red=Cloning site Blue=ORF Green=Tags(s)

TTTTGTAATACGACTCACTATAGGGCGGCCGGAATTCGTCGACTGGATCCGGTACCGAGGAGATCTGCC
GCC**CGATCGCC**

ATGACCTCCGAGTTCTTCTGCCCAGCTCCGGGCCAGATCTCTGACGACACCACTCACCCGATCTCT
ACTACAAGCCCGAGTTCTACATGCCGGATGACGGGGGCACTGCTCACCTGTCTGTGGTCGCAGAGGACGG
CAGTGTGTGTCGCCACCAGCACCATCAACCTCTACTTTGGCTCCAAGGTGCGTCCCCAGTCAGCGG
ATCCTGCTCAATAATGAAATGGATGACTTCAGCTCTACCAGCATACCAACGAGTTTGGGTACCCCT
CACCTGCCAATTCATCCAGCCAGGAAGCAGCCGCTCTCGTCCATGTGCCGACGATCATGGTGGCCA
GGACGGCCAGGTCGGATGGTGGTGGGAGCTGCCGGGGCAGCAGATCACCATGGCCACTGCACCTGGCC
ATCATCTACAACCTCTGGTTCGGCTATGACGTGAAGTGGGCCGTGGAGGAGCCCCGGCTGCACAACCAGC
TTCTGCCAACGTACGACAGTGGAGAGAAACATTGACCAGGAAGTACTGCAGCCCTGGAGACCCGGCA
CCATCACACCCAGATCACGTCCACCTTCATTGCTGTGGTGAAGCCATCGTCCGCATGGCTGGTGGCTGG
GCAGCTGCCTCGGACTCCAGAAAGGTGGGAACCTGCTGGCTAC

ACGCGTACGCGGCCGCTCGAGCAGAAACTCATCTCAGAAGAGGATCTGGCAGCAAATGATATCTGGATT
ACAAGGATGACGACGATAAGGTTTAA



[View online »](#)

Protein Sequence: >RC212634 representing NM_178311
Red=Cloning site Green=Tags(s)

MTSEFFSAQLRAQISDDTTHPISYYKPEFYMPDDGGTAHLSVVAEDGSAVSATSTINLYFGSKVRSVPVSG
 ILLNNEMDDFSSTISITNEFGVPPSPANFIQPGKQPLSSMCPTIMVGDGQVRMVGAAGGTQITMATALA
 I IYNLWFGYDVKWAVEEPRLHNQLLPNVTTVERNIDQEVTAALETRHHHTQITSTFIIVVQAIVRMAGGW
 AAASDRKGGEPAGY

TRTRPLEQKLISEEDLAANDILDYKDDDDKV

Chromatograms: https://cdn.origene.com/chromatograms/mk8023_f07.zip

Restriction Sites: SgfI-MluI

Cloning Scheme:



ACCN: NM_178311

ORF Size: 675 bp

OTI Disclaimer: The molecular sequence of this clone aligns with the gene accession number as a point of reference only. However, individual transcript sequences of the same gene can differ through naturally occurring variations (e.g. polymorphisms), each with its own valid existence. This clone is substantially in agreement with the reference, but a complete review of all prevailing variants is recommended prior to use. [More info](#)

OTI Annotation: This clone was engineered to express the complete ORF with an expression tag. Expression varies depending on the nature of the gene.

Components: The ORF clone is ion-exchange column purified and shipped in a 2D barcoded Matrix tube containing 10ug of transfection-ready, dried plasmid DNA (reconstitute with 100 ul of water).

Reconstitution Method:

1. Centrifuge at 5,000xg for 5min.
2. Carefully open the tube and add 100ul of sterile water to dissolve the DNA.
3. Close the tube and incubate for 10 minutes at room temperature.
4. Briefly vortex the tube and then do a quick spin (less than 5000xg) to concentrate the liquid at the bottom.
5. Store the suspended plasmid at -20°C. The DNA is stable for at least one year from date of shipping when stored at -20°C.

Note: Plasmids are not sterile. For experiments where strict sterility is required, filtration with 0.22um filter is required.

RefSeq: [NM_178311.3](#)

RefSeq Size: 1049 bp

RefSeq ORF: 678 bp

Locus ID: 92086

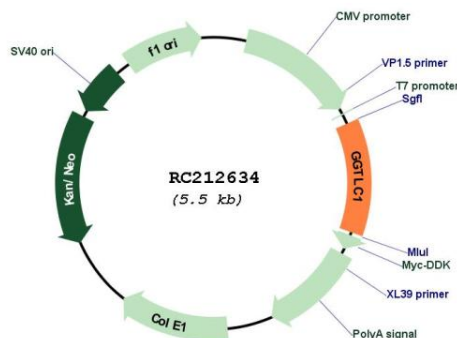
UniProt ID: [Q9BX51](#)

Cytogenetics: 20p11.21

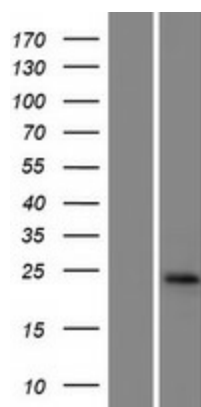
MW: 24.1 kDa

Gene Summary: This gene encodes a member of the gamma-glutamyl transpeptidase (GGT) family, which are important in the metabolism of glutathione. The most ubiquitously expressed human GGT gene, GGT1, encodes a single transmembrane polypeptide that is post-translationally processed to form a heavy and a light chain. In contrast, the product of this gene only contains homology to the light chain region, and lacks a transmembrane domain. Multiple alternatively spliced variants, encoding the same protein, have been identified. [provided by RefSeq, Oct 2008]

Product images:



Circular map for RC212634



Western blot validation of overexpression lysate (Cat# [LY405995]) using anti-DDK antibody (Cat# [TA50011-100]). Left: Cell lysates from untransfected HEK293T cells; Right: Cell lysates from HEK293T cells transfected with RC212634 using transfection reagent MegaTran 2.0 (Cat# [TT210002]).