

Product datasheet for **RC212628L2V**

DLL4 (NM_019074) Human Tagged ORF Clone Lentiviral Particle

Product data:

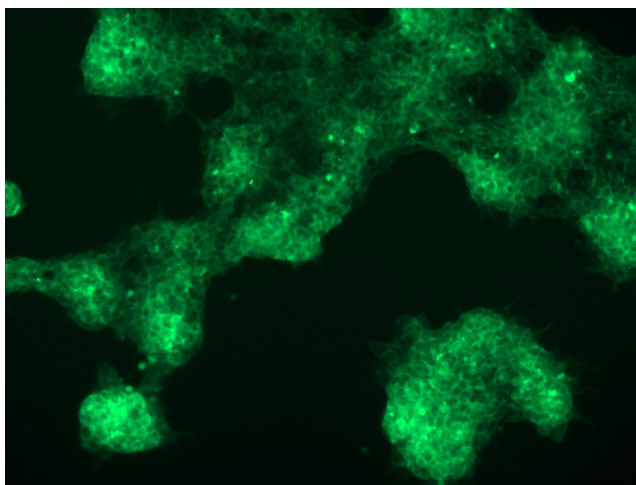
Product Type:	Lentiviral Particles
Product Name:	DLL4 (NM_019074) Human Tagged ORF Clone Lentiviral Particle
Symbol:	DLL4
Synonyms:	AOS6; delta4; hdelta2
Mammalian Cell Selection:	None
Vector:	pLenti-C-mGFP (PS100071)
Tag:	mGFP
ACCN:	NM_019074
ORF Size:	2055 bp
ORF Nucleotide Sequence:	The ORF insert of this clone is exactly the same as(RC212628).
OTI Disclaimer:	The molecular sequence of this clone aligns with the gene accession number as a point of reference only. However, individual transcript sequences of the same gene can differ through naturally occurring variations (e.g. polymorphisms), each with its own valid existence. This clone is substantially in agreement with the reference, but a complete review of all prevailing variants is recommended prior to use. More info
OTI Annotation:	This clone was engineered to express the complete ORF with an expression tag. Expression varies depending on the nature of the gene.
RefSeq:	NM_019074.2
RefSeq Size:	3383 bp
RefSeq ORF:	2058 bp
Locus ID:	54567
UniProt ID:	Q9NR61
Cytogenetics:	15q15.1
Domains:	DSL, EGF



[View online »](#)

Protein Families:	Cancer stem cells, Druggable Genome, ES Cell Differentiation/IPS, Stem cell relevant signaling - DSL/Notch pathway, Transmembrane
Protein Pathways:	Notch signaling pathway
MW:	71.9 kDa
Gene Summary:	This gene is a homolog of the Drosophila delta gene. The delta gene family encodes Notch ligands that are characterized by a DSL domain, EGF repeats, and a transmembrane domain. [provided by RefSeq, Jul 2008]

Product images:



[RC212628L2] was used to prepare Lentiviral particles using [TR30037] packaging kit. HEK293T cells were transduced with RC212628L2V particle to overexpress human DLL4-mGFP fusion protein.