

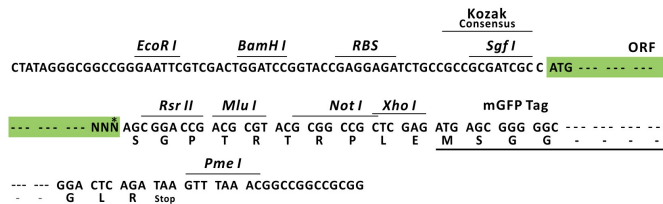
Product datasheet for RC212628L2

DLL4 (NM_019074) Human Tagged Lenti ORF Clone

Product data:

Product Type:	Expression Plasmids
Product Name:	DLL4 (NM_019074) Human Tagged Lenti ORF Clone
Tag:	mGFP
Symbol:	DLL4
Synonyms:	AOS6; delta4; hdelta2
Mammalian Cell Selection:	None
Vector:	pLenti-C-mGFP (PS100071)
E. coli Selection:	Chloramphenicol (34 ug/mL)
ORF Nucleotide Sequence:	The ORF insert of this clone is exactly the same as(RC212628).
Restriction Sites:	SgfI-RsrII
Cloning Scheme:	

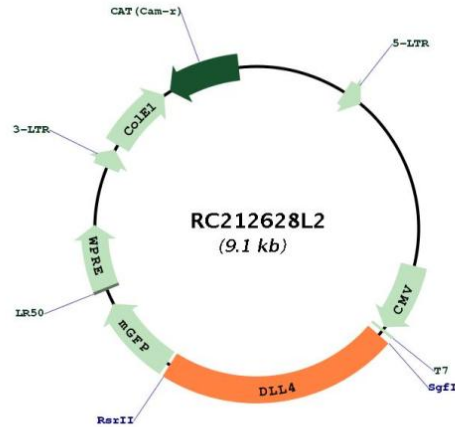
Cloning sites used for ORF Shuttling:



* The last codon before the Stop codon of the ORF.



[View online »](#)

Plasmid Map:


ACCN: NM_019074

ORF Size: 2055 bp

OTI Disclaimer: The molecular sequence of this clone aligns with the gene accession number as a point of reference only. However, individual transcript sequences of the same gene can differ through naturally occurring variations (e.g. polymorphisms), each with its own valid existence. This clone is substantially in agreement with the reference, but a complete review of all prevailing variants is recommended prior to use. [More info](#)

OTI Annotation: This clone was engineered to express the complete ORF with an expression tag. Expression varies depending on the nature of the gene.

Components: The ORF clone is ion-exchange column purified and shipped in a 2D barcoded Matrix tube containing 10ug of transfection-ready, dried plasmid DNA (reconstitute with 100 ul of water).

Reconstitution Method:

1. Centrifuge at 5,000xg for 5min.
2. Carefully open the tube and add 100ul of sterile water to dissolve the DNA.
3. Close the tube and incubate for 10 minutes at room temperature.
4. Briefly vortex the tube and then do a quick spin (less than 5000xg) to concentrate the liquid at the bottom.
5. Store the suspended plasmid at -20°C. The DNA is stable for at least one year from date of shipping when stored at -20°C.

RefSeq: [NM_019074.2](#)

RefSeq Size: 3383 bp

RefSeq ORF: 2058 bp

Locus ID:	54567
UniProt ID:	Q9NR61
Cytogenetics:	15q15.1
Domains:	DSL, EGF
Protein Families:	Cancer stem cells, Druggable Genome, ES Cell Differentiation/IPS, Stem cell relevant signaling - DSL/Notch pathway, Transmembrane
Protein Pathways:	Notch signaling pathway
MW:	71.9 kDa
Gene Summary:	This gene is a homolog of the Drosophila delta gene. The delta gene family encodes Notch ligands that are characterized by a DSL domain, EGF repeats, and a transmembrane domain. [provided by RefSeq, Jul 2008]