

Product datasheet for RC212623

KRT31 (NM_002277) Human Tagged ORF Clone

Product data:

Product Type:	Expression Plasmids
Product Name:	KRT31 (NM_002277) Human Tagged ORF Clone
Tag:	Myc-DDK
Symbol:	KRT31
Synonyms:	Ha-1; HA1; hHa1; KRTHA1
Mammalian Cell Selection:	Neomycin
Vector:	pCMV6-Entry (PS100001)
E. coli Selection:	Kanamycin (25 ug/mL)
ORF Nucleotide Sequence:	>RC212623 ORF sequence Red=Cloning site Blue=ORF Green=Tags(s)

TTTTGTAATACGACTCACTATAGGGCGGCCGGAATTCGTCGACTGGATCCGGTACCGAGGAGATCTGCC
GCC**CGATCGCC**

ATGCCCTACAACCTTGCCTGCCAGCCTGAGCTGCCGCACCAGCTGCTCCTCCCGGCCCTGCGTGCCCC
CCAGCTGCCACAGCTGCACCCTGCCGGGGCTGCAACATCCCCGCAATGTGAGCAACTGCAACTGGTT
CTGCGAGGGCTCCTTCAATGGTAGCGAGAAGGAGACTATGCAGTTCCTGAACGACCGCTGGCCAGCTAC
CTGGAGAAAGTGCCTCAGCTGGAGCGGGACAACCGGAGCTGGAGAACCTCATCCGGGAGCGGTCTCAGC
AGCAGGAGCCCTTGCTGTGCCAGTTACCAGTCTATTTAAGACCATTGAGGAGCTCCAGCAGAAGAT
CCTGTGTACCAAGTCTGAGAATGCCAGGCTTGTGGTGCAGATCGACAACGCCAAGCTGGCTGCGGATGAT
TTCAGAACCAAGTACCAGACCGAGCTGTCCCTGCGGCAGCTGGTGGAGTCGGACATCAACGGTCTGCGCA
GGATCCTGGATGAGCTGACCCTGTGCAAGTCCGACCTGGAGGCCAGGTGGAGTCCCTGAAGGAGGAGCT
GCTCTGCCTCAAGAGCAACCATGAGCAGGAGGTCAATACCCTGCGCTGCCAGCTTGGAGACCGCCTCAAT
GTGGAGGTGGATGCTGCTCCACTGTGGACCTGAATCGGGTGTGAACGAGACCAGGAGTCAATATGAGG
CCCTGGTGGAAACCAACCGCAGGGAAGTGGAGCAATGGTTCACCACGCAGACCGAGGAGTGAACAAGCA
GGTGGTATCCAGCTCAGAGCAGCTGCAGTCTACCAGGCGGAGATCATCGAGCTGAGACGCACAGTCAAC
GCCCTGGAGATCGAGCTGCAGGCCAGCACAACCTGCGAGACTCTGGAAAACACGCTGACAGAGAGTG
AGGCCCGCTACAGCTCCAGCTGTCCAGGTGCAGAGCCTGATCACCACGTTGGAGTCCAGCTGGCGGA
GATCCGCAAGTGCCTGGAGCGGCAACAGGAGTACCAGGTGCTGCTGGATGTGCGTGCCCGGCTGGAG
TGTGAGATCAACACATACCGAGCCTGCTGGAGAGCGAGGACTGCAATCTGCCAGCAATCCCTGTGCCA
CGACCAACCGCTGCAGCAAGCCATCGGACCCTGTCTCTCCAATCCCTGTACCTCTTGTGTCCTCCTGC
CCCCTGCACACCCTGTGCCACGCCCGCTGTGGGCCCTGCAATTCCTTCGTGCGC

AG**CGGACCG**ACGCGTACGCGGCCGCTCGAGCAGAACTCATCTCAGAAGAGGATCTGGCAGCAAATGATATCC
TGGATTACAAGGATGACGACGATAAGGTTTAA



[View online »](#)

Protein Sequence: >RC212623 protein sequence
Red=Cloning site Green=Tags(s)

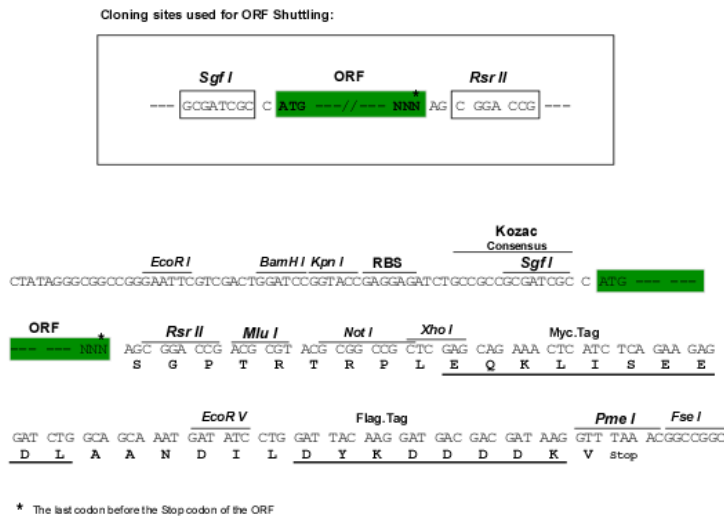
MPYNFCLPSLSCRTSCSSRPCVPPSCHSCTLPGACNIPANVSNCNWFCEGSFNGSEKETMQFLNDRASY
 LEKVRQLERDNAELENLIRERSQQEPLLCPSYQSYFKTIEELQQKILCTKSENARLVVQIDNAKLAADD
 FRTKYQTELSLRQLVESDINGLRRILDELTLCKSDLEAQVESLKEELLCLKSNHEQEVNLRQLGDRLN
 VEYDAAPTVDLNRVLNETRSQYEALVETNRREVEQWFTTQTEELNKQVVSSEQLQSYQAEIIELRRTVN
 ALEIEIQAQHNL RDSLENTL TESEARYSSQLSQVQSLITNVESQLAEIRSDLERQNYEQYQVLLDVRARLE
 CEINTYRSLLESEDCNLPSNPCATTNACSKPIGPCLSNPCTSCVPPAPCTPCAPRPRCGPCNSFVR

SGPTRTRPLEQKLI SEEDLAANDILDYKDDDDKV

Chromatograms: https://cdn.origene.com/chromatograms/mk6621_f12.zip

Restriction Sites: SgfI-RsrII

Cloning Scheme:



ACCN: NM_002277

ORF Size: 1248 bp

OTI Disclaimer: The molecular sequence of this clone aligns with the gene accession number as a point of reference only. However, individual transcript sequences of the same gene can differ through naturally occurring variations (e.g. polymorphisms), each with its own valid existence. This clone is substantially in agreement with the reference, but a complete review of all prevailing variants is recommended prior to use. [More info](#)

OTI Annotation: This clone was engineered to express the complete ORF with an expression tag. Expression varies depending on the nature of the gene.

Components: The ORF clone is ion-exchange column purified and shipped in a 2D barcoded Matrix tube containing 10ug of transfection-ready, dried plasmid DNA (reconstitute with 100 ul of water).

Reconstitution Method:

1. Centrifuge at 5,000xg for 5min.
2. Carefully open the tube and add 100ul of sterile water to dissolve the DNA.
3. Close the tube and incubate for 10 minutes at room temperature.
4. Briefly vortex the tube and then do a quick spin (less than 5000xg) to concentrate the liquid at the bottom.
5. Store the suspended plasmid at -20°C. The DNA is stable for at least one year from date of shipping when stored at -20°C.

RefSeq: [NM_002277.3](#)

RefSeq Size: 1616 bp

RefSeq ORF: 1251 bp

Locus ID: 3881

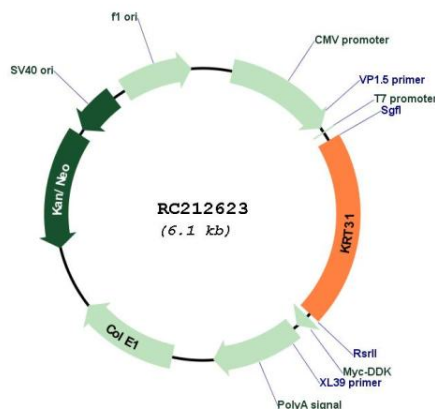
UniProt ID: [Q15323](#)

Cytogenetics: 17q21.2

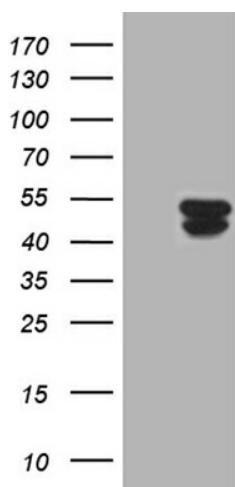
MW: 47.2 kDa

Gene Summary: The protein encoded by this gene is a member of the keratin gene family. As a type I hair keratin, it is an acidic protein which heterodimerizes with type II keratins to form hair and nails. The type I hair keratins are clustered in a region of chromosome 17q12-q21 and have the same direction of transcription. [provided by RefSeq, Jul 2008]

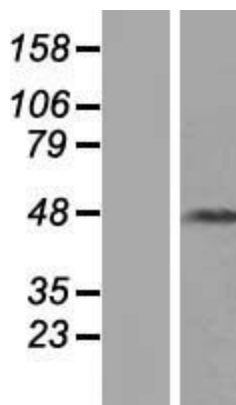
Product images:



Circular map for RC212623



HEK293T cells were transfected with the pCMV6-ENTRY control (Cat# [PS100001], Left lane) or pCMV6-ENTRY KRT31 (Cat# RC212623, Right lane) cDNA for 48 hrs and lysed. Equivalent amounts of cell lysates (5 ug per lane) were separated by SDS-PAGE and immunoblotted with anti-KRT31 (Cat# [TA811097]). Positive lysates [LY419429] (100ug) and [LC419429] (20ug) can be purchased separately from OriGene.



Western blot validation of overexpression lysate (Cat# [LY419429]) using anti-DDK antibody (Cat# [TA50011-100]). Left: Cell lysates from untransfected HEK293T cells; Right: Cell lysates from HEK293T cells transfected with RC212623 using transfection reagent MegaTran 2.0 (Cat# [TT210002]).