

Product datasheet for **RC212600**

KDM4D (NM_018039) Human Tagged ORF Clone

Product data:

Product Type:	Expression Plasmids
Product Name:	KDM4D (NM_018039) Human Tagged ORF Clone
Tag:	Myc-DDK
Symbol:	KDM4D
Synonyms:	JMJD2D
Mammalian Cell Selection:	Neomycin
Vector:	pCMV6-Entry (PS100001)
E. coli Selection:	Kanamycin (25 ug/mL)



[View online »](#)

ORF Nucleotide Sequence:

>RC212600 representing NM_018039
 Red=Cloning site Blue=ORF Green=Tags(s)

TTTTGTAATACGACTCACTATAGGGCGGCCGGGAATTCGTGACTGGATCCGGTACCGAGGAGATCTGCC
 GCC**CGGATCGCC**

ATGGAACATGAAGTCTAAGGCCAACTGTGCCAGAATCCAATTTGTAACATAATGATATTTTCATCCAA
 CCAAAGAAGATTTAATGATTTTGATAAATATATTGCTTACATGGAATCCAAGGTGCACACAGAGCTGG
 CTTGGCTAAGATAATTCCACCCAAAGAATGAAAAGCCAGAGAGACCTATGATAATATCAGTGAAATCTTA
 ATAGCCACTCCCCTCCAGCAGGTGGCCTCTGGCGGGCAGGGGTGTTACTCAATACCATAAAAAAAGA
 AAGCCATGACTGTGGGGAGTATCGCCATTTGGCAAACAGTAAAAAATATCAGACTCCACCACACCAGAA
 TTTGGAAGATTTGGAGCGAAAATACTGGAAGAACCGCATCTATAATTCACCGATTTATGGTGCTGACATC
 AGTGGCTCCTTGTGATGAAAACATAAACAATGGAATCTTGGGCACCTGGGAACAATTCAGGACCTGC
 TGGAAAAGGAATGTGGGTTGTCATAGAAGCGTCAATACACCCTACTTGTACTTTGGCATGTGGAAAAC
 CACGTTTGTCTGGCATAACAGAGGACATGGACCTTACAGCATCAACTACCTGCACCTTGGGAGCCCAA
 ACTTGGTATGTGGTGCCCCCAGAACATGGCCAGCGCTGGAACGCTGGCCAGGGAGCTCTTCCCAGGCA
 GTTCCCAGGGTGTGGGGCTTCTGCGGCACAAGGTGGCCCTCATCTCGCTACAGTTCTCAAGAAAA
 TGGGATTCCTTCAATCGCATAACTCAGGAGGCTGGAGAGTTCATGGTGACCTTTCCCTATGGTACCAT
 GCTGGCTTCAACCATGGTTTCAACTGCGCAGAGGCCATCAATTTTGGCACTCCGCGATGGATTGATTATG
 GCAAAATGGCCTCCAGTGTAGCTGTGGGAGGCAAGGGTGACCTTTCCATGGATGCCTTCGTGCGCAT
 CCTGCAACCTGAACGCTATGACCTGTGAAACGTGGGCAAGACCGGGCAGTTGTGGACCACATGGAGCCC
 AGGGTACCAGCCAGCAAGAGCTGAGCACCCAGAAGGAAGTCCAGTTACCCAGGAGAGCAGCGCTGGGCC
 TGAGACAACCTCCCTCCACTGGGCCCGGCAATCCCTTGGCCTATGGCTGCCCGCAGTGGGACAGGGTG
 CCACACCCTTGTGTCTTCACTCCCACGCCAATCTGCAGTTAGTGGCACTGCTACGCAGCCCGGGCT
 GCTGCTGTCCACAGCTCTAAGAAGCCAGCTCAACTCCATCATCCACCCTGGTCCATCTGCACAGATTA
 TCCACCCTGCAAAATGGCAGACGTGGTCTGGTGGCCCTCCTCAGAACTGAGAGCTCAGGAGCTGACCT
 CCAGACTCCAGCAAGAGGCCCTTGGCGGGCACAACATGCACAGCTTCGGGCCCAGAACCTGAGCCC
 CTACCTGAGGATGGGCTTTGATGGACAAGCCTGTACCACTGAGCCAGGGCTCCAGCATCTGTCAAGG
 CTTCTGGGTGCAGCTGGGCCCTGTGCC

ACGCGTACGCGGCCGCTCGAGCAGAACTCATCTCAGAAGAGGATCTGGCAGCAAATGATATCTGGATT
 ACAAGGATGACGACGATAAGGTTTAA

Protein Sequence:

>RC212600 representing NM_018039
 Red=Cloning site Green=Tags(s)

METMKSKANCAQNPNCNIMIFHPTKEEFNDFDKYIAYMESQGAHRAGLAKIIPPKEWKARETYDNISEIL
 IATPLQQVASGRAGVFTQYHKKKAMTVGEYRHLANSKKYQTPPHQNFEDLERKYWKNRIYNSPIYGADI
 SGLSFDENTKQWNLGHLGTIQDLLEKECGVIEGVNTPYLYFGMWKTTFAWHTEMDLYSINYHLHGEPK
 TWYVVPPEHGQRLERLARELFPSSRGGAFLRHKVALISPTVLKENGIPFNITQEAGEFMVTFPYGYH
 AGFNHGFNCAEAINFATPRWIDYKMASQCSCGEARVTFSMDFVIRILQPERYDLWKRQDRAVVDHMEP
 RVPASQELSTQKEVQLPRRAALGLRQLPSHWARHSPWMAARSGTRCHTLVCSLPRQSAVSGTATQPR
 AAVHSSKKPSSTPSSTPGPSAQIIHPSNGRRGRGRPPQKLRAQELTLQTPAKRPLLAGTTCTASGPEPEP
 LPEDGALMDKPVPLSPGLQHPVKASGCSWAPVP

TRTRPLEQKLISEEDLAANDILDYKDDDDKV

Chromatograms:

https://cdn.origene.com/chromatograms/mk6109_b12.zip

Restriction Sites:

Sgfl-Mlul

Cloning Scheme:


ACCN: NM_018039

ORF Size: 1569 bp

OTI Disclaimer: The molecular sequence of this clone aligns with the gene accession number as a point of reference only. However, individual transcript sequences of the same gene can differ through naturally occurring variations (e.g. polymorphisms), each with its own valid existence. This clone is substantially in agreement with the reference, but a complete review of all prevailing variants is recommended prior to use. [More info](#)

OTI Annotation: This clone was engineered to express the complete ORF with an expression tag. Expression varies depending on the nature of the gene.

Components: The ORF clone is ion-exchange column purified and shipped in a 2D barcoded Matrix tube containing 10ug of transfection-ready, dried plasmid DNA (reconstitute with 100 ul of water).

- Reconstitution Method:**
1. Centrifuge at 5,000xg for 5min.
 2. Carefully open the tube and add 100ul of sterile water to dissolve the DNA.
 3. Close the tube and incubate for 10 minutes at room temperature.
 4. Briefly vortex the tube and then do a quick spin (less than 5000xg) to concentrate the liquid at the bottom.
 5. Store the suspended plasmid at -20°C. The DNA is stable for at least one year from date of shipping when stored at -20°C.

RefSeq: [NM_018039.2](#), [NP_060509.2](#)

RefSeq Size: 2988 bp

RefSeq ORF: 1572 bp

Locus ID: 55693

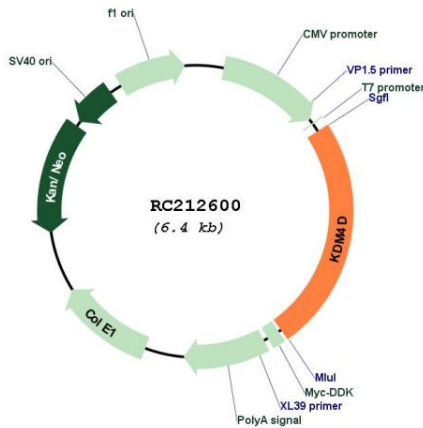
UniProt ID: [Q6B0I6](#)

Cytogenetics: 11q21

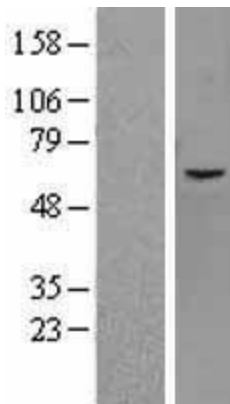
MW: 58.4 kDa

Gene Summary: Histone demethylase that specifically demethylates 'Lys-9' of histone H3, thereby playing a central role in histone code. Does not demethylate histone H3 'Lys-4', H3 'Lys-27', H3 'Lys-36' nor H4 'Lys-20'. Demethylates both di- and trimethylated H3 'Lys-9' residue, while it has no activity on monomethylated residues. Demethylation of Lys residue generates formaldehyde and succinate.[UniProtKB/Swiss-Prot Function]

Product images:



Circular map for RC212600



Western blot validation of overexpression lysate (Cat# [LY402639]) using anti-DDK antibody (Cat# [TA50011-100]). Left: Cell lysates from untransfected HEK293T cells; Right: Cell lysates from HEK293T cells transfected with RC212600 using transfection reagent MegaTran 2.0 (Cat# [TT210002]).