

Product datasheet for RC212597

PRSS21 (NM_144957) Human Tagged ORF Clone

Product data:

Product Type:	Expression Plasmids
Product Name:	PRSS21 (NM_144957) Human Tagged ORF Clone
Tag:	Myc-DDK
Symbol:	PRSS21
Synonyms:	ESP-1; ESP1; TEST1; TESTISIN
Mammalian Cell Selection:	Neomycin
Vector:	pCMV6-Entry (PS100001)
E. coli Selection:	Kanamycin (25 ug/mL)
ORF Nucleotide Sequence:	>RC212597 representing NM_144957 Red=Cloning site Blue=ORF Green=Tags(s)

TTTTGTAATACGACTCACTATAGGGCGGCCGGAATTCGTCGACTGGATCCGGTACCGAGGAGATCTGCC
GCC**CGATCGCC**

ATGGGCGCGCGGGGCGCTGCTGCTGGCGCTGCTGCTGGCTCGGGCTGGACTCAGGAAGCCGGAGTCGC
AGGAGGCGGCCCGTTATCAGGACCATGCGGCCGACGGGTCATCACGTCGCGCATCGTGGGTGGAGAGGA
CGCCGAACCTCGGGCGTTGGCCGTGGCAGGGGAGCCTGCGCCTGTGGGATCCCACGTATGCGGAGTGAGC
CTGCTCAGCCACCCTGGCACTCACGGCGGCGCACTGCTTTGAAACCTATAGTGACCTTAGTGATCCCT
CCGGGTGGATGGTCCAGTTTGGCCAGCTGACTTCCATGCCATCCTTCTGGAGCCTGCAGGCCTACTACAC
CGTTACTTCGTATCGAATATCTATCTGAGCCCTCGCTACCTGGGGAATTCACCCATGACATTGCCTTG
GTGAAGCTGTCTGCACCTGTCACCTACACTAAACACATCCAGCCCATCTGTCTCCAGGCCTCCACATTTG
AGTTTGAGAACCAGGACAGACTGCTGGGTGACTGGCTGGGGTACATCAAAGAGGATGAGGCACTGCCATC
TCCCCACACCCTCCAGGAAGTTCAGGTGCGCATCATAAACAACCTATGTGCAACCACCTCTTCTCAAG
TACAGTTTCCGCAAGGACATCTTGGAGACATGGGTGACTCAGGTGGACCCTTGGCTGTAACAAGAAATG
GACTGTGGTATCAGATTGGAGTCGTGAGCTGGGAGTGGGCTGTGGTCCGCCAATCGGCCCGGTGTCTA
CACCAATATCAGCCACCCTTTGAGTGGATCCAGAAGCTGATGGCCAGAGTGGCATGTCCCAGCCAGAC
CCCTCTGGCCGCTACTTTTTCCCTTCTCTGGGCTCTCCACTCCTGGGCGCGTC

ACGCGTACGCGGCCGCTCGAGCAGAAACTCATCTCAGAAGAGGATCTGGCAGCAAATGATATCCTGGATT
ACAAGGATGACGACGATAAGGTTTAA



[View online »](#)

Reconstitution Method:

1. Centrifuge at 5,000xg for 5min.
2. Carefully open the tube and add 100ul of sterile water to dissolve the DNA.
3. Close the tube and incubate for 10 minutes at room temperature.
4. Briefly vortex the tube and then do a quick spin (less than 5000xg) to concentrate the liquid at the bottom.
5. Store the suspended plasmid at -20°C. The DNA is stable for at least one year from date of shipping when stored at -20°C.

RefSeq: [NM_144957.3](#)

RefSeq Size: 1135 bp

RefSeq ORF: 903 bp

Locus ID: 10942

UniProt ID: [Q9Y6M0](#)

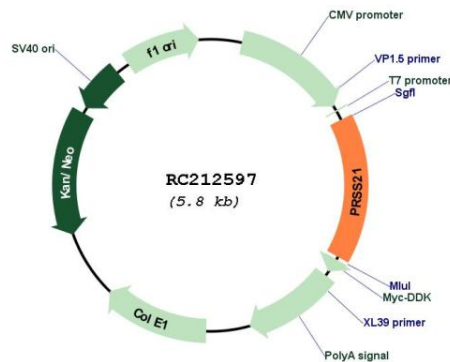
Cytogenetics: 16p13.3

Protein Families: Druggable Genome

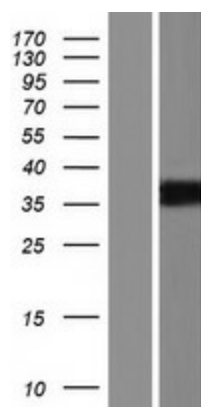
MW: 33.4 kDa

Gene Summary: This gene encodes a cell-surface anchored serine protease, which is a member of the trypsin family of serine proteases. The encoded protein is predicted to be active on peptide linkages involving the carboxyl group of lysine or arginine. The encoded protein localizes to the cytoplasm and the plasma membrane of premeiotic testicular germ cells and may be involved in progression of testicular tumors of germ cell origin. Alternatively spliced transcript variants encoding multiple isoforms have been observed for this gene. [provided by RefSeq, Jul 2012]

Product images:



Circular map for RC212597



Western blot validation of overexpression lysate (Cat# [LY408099]) using anti-DDK antibody (Cat# [TA50011-100]). Left: Cell lysates from untransfected HEK293T cells; Right: Cell lysates from HEK293T cells transfected with RC212597 using transfection reagent MegaTran 2.0 (Cat# [TT210002]).