

Product datasheet for RC212583

Her2 (ERBB2) (NM_004448) Human Tagged ORF Clone

Product data:

| | |
|---------------------------|---|
| Product Type: | Expression Plasmids |
| Product Name: | Her2 (ERBB2) (NM_004448) Human Tagged ORF Clone |
| Tag: | Myc-DDK |
| Symbol: | Her2 |
| Synonyms: | CD340; HER-2; HER-2/neu; HER2; MLN 19; NEU; NGL; TKR1 |
| Mammalian Cell Selection: | Neomycin |
| Vector: | pCMV6-Entry (PS100001) |
| E. coli Selection: | Kanamycin (25 ug/mL) |
| ORF Nucleotide Sequence: | >RC212583 representing NM_004448 Red=Cloning site Blue=ORF Green=Tags(s) |

TTTTGTAATACGACTCACTATAGGGCGGCCGGAATTCGTCGACTGGATCCGGTACCGAGGAGATCTGCCGCCGCGATCGCC

ATGGAGCTGGCGGCTTGTGCCGCTGGGGCTCCTCCTCGCCCTTTGCCCCCGGAGCCGCGAGCACCC
AAGTGTGCACCGGCACAGACATGAAGCTGCGGCTCCCTGCCAGTCCCAGACCCACCTGGACATGCTCCG
CCACCTTACCAGGGCTGCCAGGTGGTGCAGGAAACCTGGAACCTACCTACCTGCCACCAATGCCAGC
CTGTCTTCTGCAGGATATCCAGGAGGTGCAGGGCTACGTGCTCATCGCTCACAACCAAGTGAGGCAGG
TCCCACCTGCAGAGGCTGCGGATTGTGCGAGGCACCCAGCTCTTTGAGGACAACATGCCCCTGGCCGTGCT
AGACAATGGAGACCCGCTGAACAATACCACCCCTGTACAGGGGCTCCCGAGGAGGCTGCGGGAGCTG
CAGCTTCCAAGCCTCACAGAGATCTTGAAGGAGGGGTCTTGATCCAGCGGAACCCAGCTCTGTACTAC
AGGACACGATTTTGTGGAAGGACATCTTCCACAAGAACAACAGCTGGCTCTCACACTGATAGACACCAA
CCGCTCTCGGGCCTGCCACCCCTGTTCTCCGATGTGTAAGGGCTCCCGCTGCTGGGGAGAGATTCTGAG
GATTGTCAGAGCCTGACGCGCACTGTCTGTGCCGGTGGCTGTGCCCGTCAAGGGGCCACTGCCCACTG
ACTGCTGCCATGAGCAGTGTGCTGCCGGTGCACGGGCCCAAGCACTCTGACTGCCTGGCTGCCTCCA
CTTCAACCACAGTGGCATCTGTGAGTGCAGTCCAGCCCTGGTACCTACAACACAGACACGTTTGAG
TCCATGCCAATCCCAGGGCCGGTATACATTCGGCGCCAGCTGTGTACTGCCTGTCCCTACAACCTACC
TTTCTACGGACGTGGGATCCTGCACCCTCGTCTGCCCCCTGCACAACCAAGAGGTGACAGCAGAGGATGG
AACACAGCGGTGTGAGAAGTGCAGCAAGCCCTGTGCCCGAGTGTGCTATGGTCTGGGCATGGAGCACTTG
CGAGAGGTGAGGGCAGTTACCAGTGCCAATATCCAGGAGTTTGCTGGCTGCAAGAAGATCTTTGGGAGCC
TGGCATTCTGCCGGAGAGCTTTGATGGGGACCCAGCCTCCAACACTGCCCGCTCCAGCCAGAGCAGCT
CCAAGTGTGACTCTGGAAGAGATCACAGGTTACCTATACATCTCAGCATGGCCGGACAGCCTGCCT
GACCTCAGCGTCTCCAGAACCTGCAAGTAATCCGGGGACGAATTCTGCACAATGGCGCCTACTCGCTGA
CCCTGCAAGGGCTGGGCATCAGCTGGCTGGGGCTGCGCTCACTGAGGGAAGTGGGAGTGGACTGGCCCT
CATCCACCATAACCCACCTCTGCTTCGTGCACAGGTGCCCTGGGACCAGCTCTTTCGGAACCCGCAC



[View online »](#)

CAAGCTCTGCTCCACACTGCCAACCGGCCAGAGGACGAGTGTGTGGGCGAGGGCCTGGCCTGCCACCAGC
TGTGCGCCCGAGGGCACTGCTGGGGTCCAGGGCCACCCAGTGTGTCAACTGCAGCCAGTTCTTCGGGG
CCAGGAGTGCCTGGAGGAATGCCGAGTACTGCAGGGGCTCCCCAGGGAGTATGTGAATGCCAGGCACTGT
TTGCCGTGCCACCCTGAGTGTACAGCCCAAGATGGCTCAGTGACCTGTTTTGGACTGGAGGCTGACCAGT
GTGTGGCCTGTGCCACTATAAGGACCCCTCCCTTCTGCGTGGCCCGCTGCCCCAGCGGTGTAAACCTGA
CCTCTCTACATGCCATCTGGAAGTTTCCAGATGAGGAGGGCGCATGCCAGCCTTGCCCCATCAACTGC
ACCCACTCCTGTGTGGACTGGATGACAAGGGCTGCCCCGCCGAGCAGAGAGCCAGCCCTCTGACGTCCA
TCATCTCTGCGGTGGTTGGCATTCTGCTGGTCTGGTCTTGGGGTGGTCTTTGGGATCCTCATCAAGCG
ACGGCAGCAGAAGATCCGGAAGTACACGATGCGGAGACTGCTGCAGGAAACGGAGCTGGTGGAGCCGCTG
ACACCTAGCGGAGCGATGCCAACAGGCGCAGATGCGGATCCTGAAAGAGACGGAGCTGAGGAAGTGA
AGGTGCTTGGATCTGGCCTTTTGGCACAGTCTACAAGGCATCTGGATCCCTGATGGGAGAATGTGAA
AATTCCAGTGGCCATCAAAGTGTGAGGAAAACACATCCCCAAAGCCAAACAAAGAAATCTTAGACGAA
GCATACGTGATGGCTGGTGTGGCTCCCATATGTCTCCCGCTTCTGGGCATCTGCCTGACATCCACGG
TGCAGCTGGTACACAGCTTATGCCCTATGGCTGCCTCTAGACCATGTCCGGGAAAACCCGGACGCCCT
GGGCTCCCAGGACTGTGAAGTGTATGCAGATTGCCAAGGGGATGAGCTACCTGGAGGATGTGCGG
CTCGTACACAGGACTTGGCCGCTCGGAACGTGCTGGTCAAGAGTCCCAACCATGTCAAAATTACAGACT
TCGGGCTGGCTCGGCTGCTGGACATTGACGAGACAGAGTACCATGCAGATGGGGGCAAGGTGCCATCAA
GTGGATGGCGCTGGAGTCCATTCTCCGCCGGCGTTACCCACCAGAGTGTGTGGAGTTATGGTGTG
ACTGTGTGGGAGCTGATGACTTTTGGGGCCAAACCTTACGATGGGATCCCAGCCCGGAGATCCCTGACC
TGCTGGAAAAGGGGAGCGGCTGCCCCAGCCCCCATCTGCACCATTTGATGTCTACATGATCATGGTCAA
ATGTTGGATGATTGACTCTGAATGTCCGCCAAGATTCGGGAGTTGGTGTCTGAATCTCCCGCATGGCC
AGGGACCCCGAGCGCTTGTGGTCCAGAAATGAGGACTTGGGCCAGCCAGTCCCTTGGACAGCACCT
TCTACCGCTCACTGCTGGAGGACGATGACATGGGGGACCTGGTGGATGCTGAGGAGTATCTGGTACCCCA
GCAGGGCTTCTTGTCCAGACCCTGCCCCGGGCGCTGGGGGCATGGTCCACCACAGGCACCGCAGCTCA
TCTACCAGGAGTGGCGGTGGGGACCTGACACTAGGGCTGGAGCCCTCTGAAGAGGAGGCCCCAGGTCTC
CACTGGCACCCCTCCGAAGGGGCTGGCTCCGATGTATTTGATGGTACCTGGGAATGGGGGACCCAAAGG
GCTGCAAAGCCTCCCACACATGACCCAGCCCTCTACAGCGGTACAGTGGAGACCCACAGTACCCCTG
CCCTCTGAGACTGATGGCTACGTTGCCCCCTGACCTGCAGCCCCAGCCTGAATATGTGAACCAGCCAG
ATGTTCCGCCCCAGCCCCCTCGCCCCGAGAGGGCCCTCTGCCTGCTGCCGACCTGCTGGTGGCACTCT
GGAAAGGCCAAAGACTCTCTCCCAGGGAAGAATGGGGTCTGCAAGACGTTTTTGCCTTTGGGGGTGCC
GTGGAGAACCCGAGTACTTGACACCCAGGGAGGAGCTGCCCTCAGCCCCACCCTCCTCTGCCTTCA
GCCAGCCTTCGACAACCTCTATTACTGGGACCAGGACCCACCAGAGCGGGGGCTCCACCCAGCACCTT
CAAAGGGACACCTACGGCAGAGAACCAGAGTACCTGGGTCTGGACGTGCCAGT

ACGCGTACGCGGCCGCTCGAGCAGAACTCATCTCAGAAGAGGATCTGGCAGCAAATGATATCCTGGATT
ACAAGGATGACGACGATAAGGTTAA

Protein Sequence: >RC212583 representing NM_004448
 Red=Cloning site Green=Tags(s)

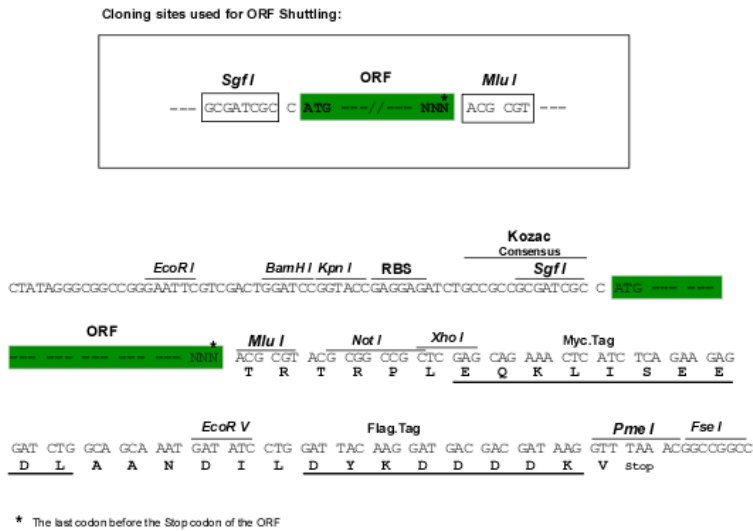
MELAALCRWGLLLALLPPGAASTQVCTGTMKLRRLPASPETHLDMLRHL YQGCQVVGQNLLETYLPTNAS
 LSFLQDIQEVQGYVLI AHNQVRQVPLQRLRIVRGTQL FEDNYALAVLDNGDPLNNTTPVTGASPGGLREL
 QLRSLTEILKGGVLIQRNPQLCYQDTILWKDIFHKNNQLAL TLIDTNRSRACHPCSPMCKGSRGWESSE
 DCQSLTRTVACGGCARCKGPLPTDCCHEQCAAGCTGPKHSDCLACLHFNHSGICELHCPALVTYNTDFFE
 SMPNPEGRYTFGASCVTACPYNYLSTDVGSCTLVCP LHNQEVTAE DGTQRCEKCSKPCARVCYGLGMEHL
 REVRAVTSANIQEFAGCKIFGSLAFLPESFDGDPASNTAPLQPEQLQVFETLEEITGYLYISAWPDSL P
 DLSVFNQLQVIRGRILHNGAYS LTLQGLISWGLRSLRELG SGLAL IHHNTHLCFVHTVPWDQLFRNPH
 QALLHTANRPEDECVGEGLACHQLCARGHCWGPPTQCVNCSQFLRGQECVEECRVLQGLPREYVNARHC
 LPCHPECPQNGSVTCFGL EADQCACAHYKDPF CVARCP SGV KPDLSYMPIWKFPDEEGACQPCPINC
 THSCVDLDDKGP AEQRASPLTSIISAVVGI LLVVVLGVVFGIL IKRRQQKIRKYTMRRLLQETELVEPL
 TPSGAMPNQAQMRILKETELRKVKVLGSGAFGT VYKGIWIPDGENVKIPVAIKVLRENTS PKANKEILDE
 AYYMAGVGS PYVSRLLGICL TSTVQLVTQLMPY GCLLDHVREN RGLGSQDLLNWC MQIAKMSYLEDVR
 LVHRDLAARNVLKSPNHVKITDFGLARLLDIDETEYHADGGKVP IKWMALESILRRRFTHQSDVWSYGV
 TVWELMTFGAKPYDGIPAREIPDLLEKGERLPQPP ICTIDVYMI MVK CW MIDSECRPRFREL VSEFSRMA
 RDPQRFFVIQNE DLGPASPLDSTFYRSLLEDDDMGDLVDAEEYLVPQQGFFCPDPAPGAGGMVHHRHRS
 STRSGGD LTLGLEPSEEEAPRSPLAPSEGAGSDVFDGDLGMGA AKGLQSLPTHDP SPLQRYSEDPTVPL
 PSETDGYVAPLTCSPQPEYVNQPDVRPQPPSPREGPLPAARPAGATLERPKT LSPGKNGVVKDVF AFGGA
 VENPEYLTPQGGAAPQHPPPAFSPA FDNLYYWDQDPPERGAPPSTFKGTP TAENPEYLGLDVVPV

TRTRPLEQKLISEEDLAANDILDYKDDDDK

Chromatograms: https://cdn.origene.com/chromatograms/mg2577_f09.zip

Restriction Sites: SgfI-MluI

Cloning Scheme:



ACCN: NM_004448

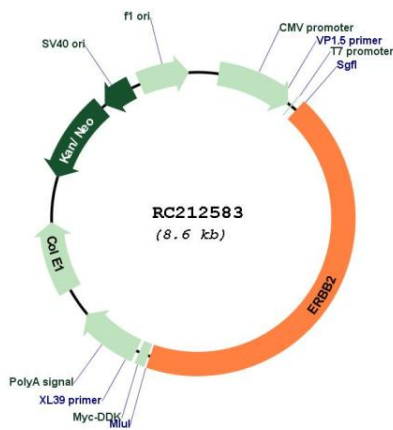
ORF Size: 3765 bp

| | |
|-------------------------------|---|
| OTI Disclaimer: | The molecular sequence of this clone aligns with the gene accession number as a point of reference only. However, individual transcript sequences of the same gene can differ through naturally occurring variations (e.g. polymorphisms), each with its own valid existence. This clone is substantially in agreement with the reference, but a complete review of all prevailing variants is recommended prior to use. More info |
| OTI Annotation: | This clone was engineered to express the complete ORF with an expression tag. Expression varies depending on the nature of the gene. |
| Components: | The ORF clone is ion-exchange column purified and shipped in a 2D barcoded Matrix tube containing 10ug of transfection-ready, dried plasmid DNA (reconstitute with 100 ul of water). |
| Reconstitution Method: | <ol style="list-style-type: none"> 1. Centrifuge at 5,000xg for 5min. 2. Carefully open the tube and add 100ul of sterile water to dissolve the DNA. 3. Close the tube and incubate for 10 minutes at room temperature. 4. Briefly vortex the tube and then do a quick spin (less than 5000xg) to concentrate the liquid at the bottom. 5. Store the suspended plasmid at -20°C. The DNA is stable for at least one year from date of shipping when stored at -20°C. |
| Note: | Plasmids are not sterile. For experiments where strict sterility is required, filtration with 0.22um filter is required. |
| RefSeq: | NM_004448.4 |
| RefSeq Size: | 4624 bp |
| RefSeq ORF: | 3768 bp |
| Locus ID: | 2064 |
| UniProt ID: | P04626 |
| Cytogenetics: | 17q12 |
| Domains: | Recep_L_domain, pkinase, TyrKc, S_TKc, YLP, Furin-like, FU |
| Protein Families: | Druggable Genome, Protein Kinase, Transmembrane |
| Protein Pathways: | Adherens junction, Bladder cancer, Calcium signaling pathway, Endometrial cancer, ErbB signaling pathway, Focal adhesion, Non-small cell lung cancer, Pancreatic cancer, Pathways in cancer, Prostate cancer |
| MW: | 137.7 kDa |

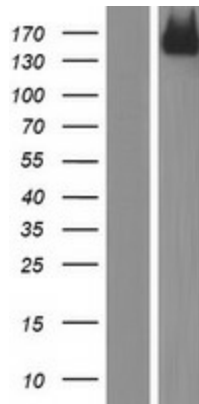
Gene Summary:

This gene encodes a member of the epidermal growth factor (EGF) receptor family of receptor tyrosine kinases. This protein has no ligand binding domain of its own and therefore cannot bind growth factors. However, it does bind tightly to other ligand-bound EGF receptor family members to form a heterodimer, stabilizing ligand binding and enhancing kinase-mediated activation of downstream signalling pathways, such as those involving mitogen-activated protein kinase and phosphatidylinositol-3 kinase. Allelic variations at amino acid positions 654 and 655 of isoform a (positions 624 and 625 of isoform b) have been reported, with the most common allele, Ile654/Ile655, shown here. Amplification and/or overexpression of this gene has been reported in numerous cancers, including breast and ovarian tumors. Alternative splicing results in several additional transcript variants, some encoding different isoforms and others that have not been fully characterized. [provided by RefSeq, Jul 2008]

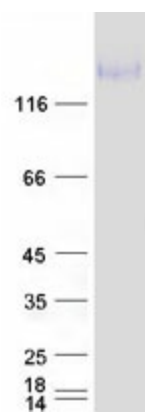
Product images:



Circular map for RC212583



Western blot validation of overexpression lysate (Cat# [LY417979]) using anti-DDK antibody (Cat# [TA50011-100]). Left: Cell lysates from untransfected HEK293T cells; Right: Cell lysates from HEK293T cells transfected with RC212583 using transfection reagent MegaTran 2.0 (Cat# [TT210002]).



Coomassie blue staining of purified ERBB2 protein (Cat# [TP312583]). The protein was produced from HEK293T cells transfected with ERBB2 cDNA clone (Cat# RC212583) using MegaTran 2.0 (Cat# [TT210002]).