

Product datasheet for RC212580

SRC3 (NCOA3) (NM_181659) Human Tagged ORF Clone

Product data:

Product Type:	Expression Plasmids
Product Name:	SRC3 (NCOA3) (NM_181659) Human Tagged ORF Clone
Tag:	Myc-DDK
Symbol:	SRC3
Synonyms:	ACTR; AIB-1; AIB1; bHLHe42; CAGH16; CTG26; KAT13B; pCIP; RAC3; SRC-3; SRC3; TNRC14; TNRC16; TRAM-1
Mammalian Cell Selection:	Neomycin
Vector:	pCMV6-Entry (PS100001)
E. coli Selection:	Kanamycin (25 ug/mL)
ORF Nucleotide Sequence:	>RC212580 representing NM_181659 Red=Cloning site Blue=ORF Green=Tags(s)

TTTTGTAATACGACTCACTATAGGGCGGCCGGAATTCGTCGACTGGATCCGGTACCGAGGAGATCTGCC
GCCGCGATCGCC

ATGAGTGGATTAGGAGAAAACCTGGATCCACTGGCCAGTGATTACGAAAACGCAAATTGCCATGTGATA
CTCCAGGACAAGGTCTTACCTGCAGTGGTAAAAACGGAGACGGGAGCAGGAAAGTAAATATATTGAAGA
ATTGGCTGAGCTGATATCTGCCAATCTTAGTGATATTGACAATTTCAATGTCAAACCAGATAAATGTGCG
ATTTTAAAGGAAACAGTAAGACAGATACGTCAAATAAAAGAGCAAGGAAAAACTATTTCCAATGATGATG
ATGTTCAAAAAGCCGATGTATCTTCTACAGGGCAGGGAGTTATTGATAAAGACTCCTTAGGACCGCTTTT
ACTTCAGGCATTGGATGGTTTCTATTTTGGTGAATCGAGACGGAAACATTGTATTGTATCAGAAAAAT
GTCACACAATACCTGCAATATAAGCAAGAGGACCTGGTTAACACAAGTGTTCACAATATCTTACATGAAG
AAGACAGAAAGGATTTTCTTAAGAATTTACCAAAATCTACAGTTAATGGAGTTTCTCGGACAAATGAGAC
CCAAAGACAAAAAGCCATACATTTAATTGCCGTATGTTGATGAAAACACCACATGATATTTCTGGAAGAC
ATAAACGCCAGTCCTGAAATGCGCCAGAGATATGAAACAATGCAGTGCTTTGCCCTGTCTCAGCCACGAG
CTATGATGGAGGAAGGGGAAGATTTGCAATCTTGATGATCTGTGTGGCAGCCGATTACTACAGGAGA
AAGAACATTTCCATCAAACCTGAGAGCTTTATTACCAGACATGATCTTTCAGGAAAGGTTGTCAATATA
GATACAAATCACTGAGATCCTCCATGAGGCCTGGCTTTGAAGATATAATCCGAAGGTGATTTCAGAGAT
TTTTTAGTCTAAATGATGGGCAGTCATGGTCCCAGAAACGTCACATCAAGAAGCTTATCTTAATGGCCA
TGCAGAAACCCAGTATATCGATTCTCGTTGGCTGATGGAACATAGTGACTGCACAGACAAAAAGCAAA
CTCTCCGAAATCCTGTAACAAATGATCGACATGGCTTTGTCTCAACCCACTTCTTCAGAGAGAACAGA
ATGGATATAGACCAAACCAATCCTGTTGGACAAGGGATTAGACCACCTATGGCTGGATGCAACAGTTC
GGTAGGCGGCATGAGTATGTCGCCAAACCAAGGCTTACAGATGCCGAGCAGCAGGGCCTATGGCTTGCA
GACCCTAGCACCAGGGCAGATGAGTGGAGCTAGGTATGGGGTTCCAGTAACATAGCTTCATTGACCC
CTGGGCCAGGCATGCAATCACCATCTTCTACCAGAACAACAATATGGGCTCAACATGAGTAGCCCCC



ACATGGGAGTCTGGTCTTGCCCCAAACCAGCAGAATATCATGATTTCTCCTCGTAATCGTGGGAGTCCA
AAGATAGCCTCACATCAGTTTTCTCCTGTTGCAGGTGTGCACTCTCCCATGGCATCTTCTGGCAACTG
GGAACCACAGCTTTTCCAGCAGCTCTCTCAGTGCCTGCAAGCCATCAGTGAAGGTGTGGGGACTTCCCT
TTTATCTACTCTGTATCACCAGGCCCAAATTGGATAACTCTCCAATATGAATATTACCAACCAAGT
AAAGTAAGCAATCAGGATTCCAAGATCCTCTGGGCTTTATTGCGACCAAAATCCAGTGGAGAGTTCAA
TGTGTCACTCAAATAGCAGAGATCACCTCAGTGACAAAGAAAGTAAGGAGAGCAGTGTGGGGGGCAGA
GAATCAAAGGGTCTTTGGAAAGCAAAGTCAAAAAAATTACTGCAGTTACTTACCTGTTCTTTCTGAT
GACCGGGTCAATCCTCCTTGACCAACTCCCCCTAGATTCAAGTTGTAAGAATCTTCTGTTAGTGCA
CCAGCCCCCTGGAGTCTCCTCCTACATCTGGAGGAGTATCCTCTACATCCAATATGCATGGGTCCT
GTTACAAGAGAAGCACCGGATTTTGACAAGTTGCTGCAGAATGGGAATTCACCAGCTGAGGTAGCCAAG
ATTACTGCAGAAGCCACTGGGAAAGACACCAGCAGTATAACTTCTTGTGGGGACGGAAATGTTGTCAAGC
AGGAGCAGCTAAGTCTAAGAAGAAGGAGAATAATGCACCTTCTTAGATACCTGCTGGACAGGGATGATCC
TAGTGATGCACCTCTAAAGAACTACAGCCCCAAGTGGAAAGGAGTGGATAATAAAATGAGTCAGTGCACC
AGCTCCACCATTCTAGCTCAAGTCAAGAGAAAGACCCTAAAATTAAGACAGAGACAAGTGAAGAGGGAT
CTGGAGACTTGGATAATCTAGATGCTATTCTTGGTGATCTGACTAGTTCTGACTTTTACAATAATCCAT
ATCCTCAAATGGTAGTCATCTGGGGACTAAGCAACAGGTGTTCAAGGAACTAATCTCTGGGTTTGAAA
AGTTCACAGTCTGTGCAGTCTATTCTGCTCCTCATATAACCGAGCAGTGTCTCTGGATAGCCCTGTTTCTG
TTGGCTCAAGTCTCCAGTAAAAAATATCAGTGTCTTCCCATGTTACCAAAGCAACCCATGTTGGGTGG
GAATCAAAGATGATGGATAGTCAGGAAAATATGGCTCAAGTATGGGTGGGCCAAACCGAAATGTGACT
GTGACTCAGACTCCTTCTCAGGAGACTGGGGCTTACCAAACCTCAAAGGCCGGCAGAATGGAACCTATGA
ATTCAAACTCCATGGGAAGACCAGGAGGAGATTATAACTTCTTACCAGACCTGCACTGGGTGGCTC
TATCCACATTGCCCTCTCGGTCTAATAGCATACCAGGTGCGAGACCAGTATTGCAACAGCAGCAGCAG
ATGCTTCAAATGAGGCCGTGGTGAATCCCATGGGAATGGGGCTAATCCCTATGGCCAAGCAGCAGCAT
CTAACCAACTGGGTTCTGGCCCGATGGCATGTTGTCCATGGAACAAGTTTCTCATGGCACTCAAATAG
GCCTCTTCTTAGGAATCCCTGGATGATCTTGTGGGCCACCTTCCAACCTGGAAGGCCAGAGTGACGAA
AGAGCATTATTGGACCAGCTGCACACTTCTCAGCAACACAGATGCCACAGGCTGGAAGAAATGACA
GAGCTTTGGCATTCTGAACTTGTCAATCAGGGACAGGCATTAGAGCCAAACAGGATGCTTTCCAAGG
CCAAGAAGCAGCAGTAATGATGGATCAGAAGGCAGGATTATAGGACAGACATACCAGCAGCAGGGGCT
CCAATGCAAGGAGGCTTTCATCTCAGGGACAATCACCATCTTTAACTCTATGATGAATCAGATGAACC
AGCAAGGCAATTTCTCTCCAAGGAATGCACCCAGGCAACATCATGAGACCCCGGACAAACACCCC
CAAGCAACTTAGAATGCAGCTTACAGCAGAGGCTGCAGGGCCAGCAGTTTTTGAATCAGAGCCGACAGGCA
CTTGAATTGAAAATGAAAACCCCTACTGCTGGTGGTGCTGCGGTGATGAGGCCTATGATGCAGCCCAAG
TGAGCTCCAGCAGGGTTTTCTAATGCTCAAATGGTCCGCCAACGCAGCAGAGAGCTGTAAGTATCA
CTTCCGACAACAGAGGGTGGCTATGATGATGCAGCAGCAGCAGCAGCAGCAACAGCAGCAGCAGCAGCAG
CAGCAGCAGCAACAGCAACAGCAACAGCAACAGCAGCAACAGCAGCAACCCAGGCTTACAGCCACCTC
CTAATGTGACTGCTTCCCCAGCATGGATGGGCTTTTGGCAGGACCCACAATGCCACAAGCTCCTCCGCA
ACAGTTTCCATATCAACCAAAATATGGAATGGGACAACAACCAGATCCAGCCTTTGGTGGAGTGTCTAGT
CCTCCCAATGCAATGATGTCGTCAGAAATGGGTCCCTCCAGAATCCCATGATGCAACACCCGACAGGCTG
CATCCATCTATCAGTCTCAGAAATGAAGGCTGGCCATCAGGAAATTTGGCCAGGAACAGCTCCTTTTC
CCAGCAGCAGTTTGCCACCAGGGGAATCCTGCAGTGTATAGTATGGTGCACATGAATGGCAGCAGTGGT
CACATGGGACAGATGAACATGAACCCATGCCATGTCTGGCATGCCTATGGGTCTGATCAGAAATACT
GC

ACGCGTACGCGGCCGCTCGAGCAGAACTCATCTCAGAAGAGGATCTGGCAGCAATGATATCCTGGATT
ACAAGGATGACGACGATAAGGTTTAA

Protein Sequence: >RC212580 representing NM_181659
 Red=Cloning site Green=Tags(s)

```

MSLGENLDPLASDRKRKLPDTPGQGLTCSGEKRRREQESKYIEELAEIISANLSDIDNFNVKPKDCA
ILKETVRQIRQIKEQGKTI SNDDDVQKADVSSSTGGVIDKDSLGPLLLQALDGLFVVRNDRGNIVFVSEN
VTQYLQYKQEDLVNTSVYNILHEEDRKDFLKNLPKSTVNGVSWTNETQRQKSHTFNCRMLMKTPHDIED
INASPEMRQRYETMQCFALSQPRAMMEEGEDLQSCMICVARRITGERTFPSNPESFITRHDLSGKVVNI
DTNSLRSSMRPGFEDIIRRCIQRFSLNDGQSWSQKRHYQEAYLNGHAETPVYRFLADGTIVTAQTKSK
LFRNPVTNDRHGFVSTHFLQREQNGYRPNPNPVGQGIRPPMAGCNSSVGGMSMSPNQGLQMPSSRAYGLA
DPSTTGQMSGARYGSSNIAASLTPGPGMQSPSSYQNNNYGLNMSSPPHGSPLAPNQNIIMISPRNRGSP
KIASHQFSPVAGVHSPMASSGNTGNHSFSSSSLALQAISEGVGTSLSTLSSPGPKLDNSPNMNIQPS
KVSNQDSKSPGFYCDQNPVESSMCQSNRDLSDKESKESSEVEGAENQRGPLESKGHKLLQLLTCSSD
DRGHSSLTNSPLDSSCKESSVSVTSPSGVSSSTSGVSSSTSNMHGSLLQEKHRIHLKLLQNGNSPAEVAK
ITAATGKDTSSITSCGDGNVVKQEQLSPKKKENNALLRYLLDRDDPSDALSKELQPQVEGVNDKMSQCT
SSTIPSSSQEKPKIKTETSEEGSGDLNLDAILGDLTSSDFYNNISSNGSHLGTKQQVFQGTNSLGLK
SSQSVQSRPPYNRAVSLDSPVSVGSSPPVKNISAFMPLPKQPMGLGNPRMDSQENYSSMGGPNRNV
VTQTPSSGDWGLPNSKAGRMEPMNSNSMGRPGDYNTSLPRPALGGS IPTPLRNSNIPGARPVLQQQQQ
MLQMRPGEIPMGGANPYQAAAASNLGSWPDGMLSMEQVSHGTQNRPLLRNSLDDL VGPPSNLEGGQSD
RALLDQLHTLLSNTDATGLEEIDRALGIPELVNQQALEPKQDAFQGGQEAAMMDQKAGLYGQTYPAQGP
PMQGGFHLQGGQSPSFNSMMNQMNQGNFPLQGMHPRANIMRPRNTNPKQLRMQLQRLQGGQFLNQSRQA
LELKMENPTAGGAAMRPMMPQVSSQQGFLNAQMVAQRSRELLSHHFRQQRVAMMMQQQQQQQQQQQ
QQQQQQQQQQQQQQQTQAFSPPPNVTASPSMDGLLAGPTMPQAPPQFPYQPNYGMGQQPDPAFGRVSS
PPNAMMSSRMGSPQNPMMQHPQAASIYQSSEMKGWPSGNLARNSSFQQQFAHQGNPAVYSMVHMNGSSG
HMGQMNMPMPMSGMPMGPDQKYC
    
```

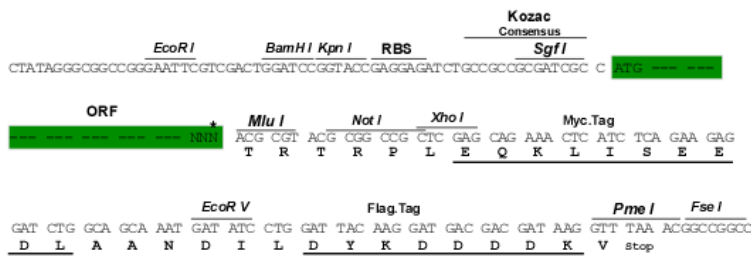
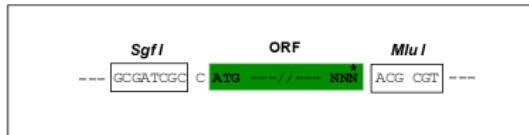
TRTRPLEQKLISEEDLAANDILDYKDDDDKV

Chromatograms: https://cdn.origene.com/chromatograms/ja1803_b11.zip

Restriction Sites: SgfI-MluI

Cloning Scheme:

Cloning sites used for ORF Shuttling:



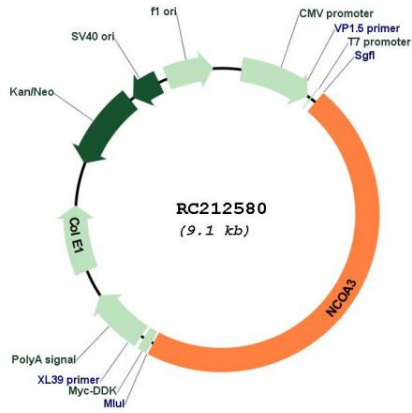
* The last codon before the Stop codon of the ORF

ACCN: NM_181659

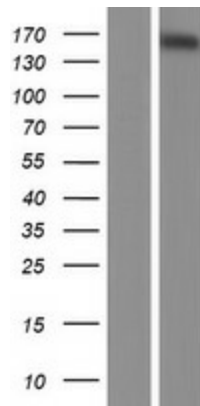
ORF Size: 4272 bp

OTI Disclaimer:	The molecular sequence of this clone aligns with the gene accession number as a point of reference only. However, individual transcript sequences of the same gene can differ through naturally occurring variations (e.g. polymorphisms), each with its own valid existence. This clone is substantially in agreement with the reference, but a complete review of all prevailing variants is recommended prior to use. More info
OTI Annotation:	This clone was engineered to express the complete ORF with an expression tag. Expression varies depending on the nature of the gene.
Components:	The ORF clone is ion-exchange column purified and shipped in a 2D barcoded Matrix tube containing 10ug of transfection-ready, dried plasmid DNA (reconstitute with 100 ul of water).
Reconstitution Method:	<ol style="list-style-type: none">1. Centrifuge at 5,000xg for 5min.2. Carefully open the tube and add 100ul of sterile water to dissolve the DNA.3. Close the tube and incubate for 10 minutes at room temperature.4. Briefly vortex the tube and then do a quick spin (less than 5000xg) to concentrate the liquid at the bottom.5. Store the suspended plasmid at -20°C. The DNA is stable for at least one year from date of shipping when stored at -20°C.
RefSeq:	NM_181659.3
RefSeq Size:	7996 bp
RefSeq ORF:	4275 bp
Locus ID:	8202
UniProt ID:	Q9Y6Q9
Cytogenetics:	20q13.12
Protein Families:	Druggable Genome, Transcription Factors
MW:	155.3 kDa
Gene Summary:	The protein encoded by this gene is a nuclear receptor coactivator that interacts with nuclear hormone receptors to enhance their transcriptional activator functions. The encoded protein has histone acetyltransferase activity and recruits p300/CBP-associated factor and CREB binding protein as part of a multisubunit coactivation complex. This protein is initially found in the cytoplasm but is translocated into the nucleus upon phosphorylation. Several transcript variants encoding different isoforms have been found for this gene. In addition, a polymorphic repeat region is found in the C-terminus of the encoded protein. [provided by RefSeq, Mar 2010]

Product images:



Circular map for RC212580



Western blot validation of overexpression lysate (Cat# [LY405554]) using anti-DDK antibody (Cat# [TA50011-100]). Left: Cell lysates from untransfected HEK293T cells; Right: Cell lysates from HEK293T cells transfected with RC212580 using transfection reagent MegaTran 2.0 (Cat# [TT210002]).