

## Product datasheet for RC212578

### PLAAT2 (NM\_017878) Human Tagged ORF Clone

#### Product data:

**Product Type:** Expression Plasmids  
**Product Name:** PLAAT2 (NM\_017878) Human Tagged ORF Clone  
**Tag:** Myc-DDK  
**Symbol:** PLAAT2  
**Synonyms:** HRASLS2; PLA1/2-2; PLAAT-2  
**Mammalian Cell Selection:** Neomycin  
**Vector:** pCMV6-Entry (PS100001)  
**E. coli Selection:** Kanamycin (25 ug/mL)  
**ORF Nucleotide Sequence:** >RC212578 representing NM\_017878  
Red=Cloning site Blue=ORF Green=Tags(s)

TTTTGTAATACGACTCACTATAGGGCGGCCGGAATTCGTCGACTGGATCCGGTACCGAGGAGATCTGCC  
GCC**CGATCGCC**

ATGGCTTTGGCCAGACCAAGACCGAGACTTGGAGACCTGATTGAGATTTCTCGCTTTGGCTATGCACACT  
GGGCCATCTACGTGGGAGATGGCTATGTGGTCCATCTGGCTCCGGCAAGTAAATGCTGGAGCTGGTGC  
GGCCAGTGTCTGTCTGCCCTGACCAACAAAGCCATAGTGAAGAAGGAAGTGTCTGTGGTGGCTGGG  
GGAGACAACACTACAGGGTCAATAACAAGCAGCATGACAGATACACACCACTGCCTTCCAACAAAATCGTCA  
AGCGGGCAGAGGAGTTGGTGGGCGAGGATTGCCTTATTCGCTGACCAGTGACAAGTGCAGCACTTCGT  
GAACCATCTGCGCTATGGCGTCTCCCGCAGTGACCAGGTCAGTGGTGCAGTACAGACAGTGGTGTGGCA  
GCAGGCCTGCTGGCTGCCGAAGCCTTGTGGGGATCCTGCTGGCCAGAAGCAAGCGGAAAGGCAA

**ACGCGT**ACGCGGCCGCTCGAGCAGAACTCATCTCAGAAGAGGATCTGGCAGCAAATGATATCCTGGATT  
ACAAGGATGACGACGATAAGGTTTAA

**Protein Sequence:** >RC212578 representing NM\_017878  
Red=Cloning site Green=Tags(s)

MALARPRRLGDLIEISRFYAHWAIYVGDGYVHLAPASEIAGAGAASVLSALTNKAIIVKHELLSVVAG  
GDNYRVNKHDDRYTPLPSNKIVKRAEELVQELPYSLTSDNCEHFVNHLRYGVSRSDQVTGAVTTVGVA  
AGLLAAASLVGILLARSKRERQ

**TRTRPLEQKLISEEDLAANDILDYKDDDDKV**

**Chromatograms:** [https://cdn.origene.com/chromatograms/mk8009\\_f08.zip](https://cdn.origene.com/chromatograms/mk8009_f08.zip)



[View online »](#)

Restriction Sites: SgfI-MluI

Cloning Scheme:



ACCN: NM\_017878

ORF Size: 486 bp

OTI Disclaimer: The molecular sequence of this clone aligns with the gene accession number as a point of reference only. However, individual transcript sequences of the same gene can differ through naturally occurring variations (e.g. polymorphisms), each with its own valid existence. This clone is substantially in agreement with the reference, but a complete review of all prevailing variants is recommended prior to use. [More info](#)

OTI Annotation: This clone was engineered to express the complete ORF with an expression tag. Expression varies depending on the nature of the gene.

Components: The ORF clone is ion-exchange column purified and shipped in a 2D barcoded Matrix tube containing 10ug of transfection-ready, dried plasmid DNA (reconstitute with 100 ul of water).

Reconstitution Method:

1. Centrifuge at 5,000xg for 5min.
2. Carefully open the tube and add 100ul of sterile water to dissolve the DNA.
3. Close the tube and incubate for 10 minutes at room temperature.
4. Briefly vortex the tube and then do a quick spin (less than 5000xg) to concentrate the liquid at the bottom.
5. Store the suspended plasmid at -20°C. The DNA is stable for at least one year from date of shipping when stored at -20°C.

RefSeq: [NM\\_017878.2](#)

RefSeq Size: 785 bp

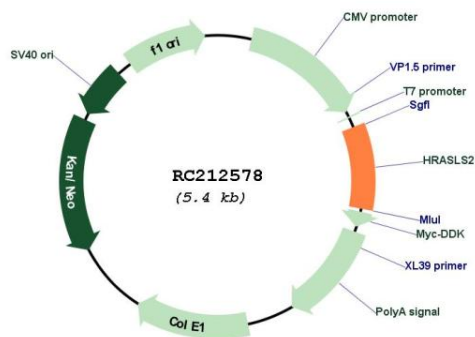
RefSeq ORF: 489 bp

Locus ID: 54979

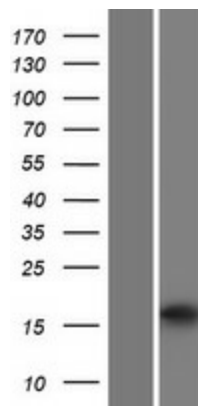
**UniProt ID:** [Q9NWW9](#)  
**Cytogenetics:** 11q12.3  
**Protein Families:** Druggable Genome, Transmembrane  
**MW:** 17.2 kDa

**Gene Summary:** The protein encoded by this gene has both phospholipase and acyltransferase activities and acts as a tumor suppressor. The encoded protein can hydrolyze dipalmitoylated phosphatidylcholine (PC) to palmitic acid and lyso-PC. In addition, this protein can catalyze the N-acylation of phosphatidylethanolamine and can catalyze the O-acylation of lyso-PC to form PC. [provided by RefSeq, Jul 2016]

### Product images:



Circular map for RC212578



Western blot validation of overexpression lysate (Cat# [LY413499]) using anti-DDK antibody (Cat# [TA50011-100]). Left: Cell lysates from untransfected HEK293T cells; Right: Cell lysates from HEK293T cells transfected with RC212578 using transfection reagent MegaTran 2.0 (Cat# [TT210002]).