

## Product datasheet for RC212569

### Exportin 4 (XPO4) (NM\_022459) Human Tagged ORF Clone

#### Product data:

|                           |   |
|---------------------------|---|
| Product Type:             | Expression Plasmids   |
| Product Name:             | Exportin 4 (XPO4) (NM_022459) Human Tagged ORF Clone                        |
| Tag:                      | Myc-DDK   |
| Symbol:                   | Exportin 4  |
| Synonyms:                 | exp4  |
| Mammalian Cell Selection: | Neomycin  |
| Vector:                   | pCMV6-Entry (PS100001)  |
| E. coli Selection:        | Kanamycin (25 ug/mL)  |
| ORF Nucleotide Sequence:  | >RC212569 representing NM_022459<br>Red=Cloning site Blue=ORF Green=Tags(s) |

TTTTGTAATACGACTCACTATAGGGCGGCCGGAATTCGTCGACTGGATCCGGTACCGAGGAGATCTGCC  
GCC**CGATCGCC**

ATGATGGCGGGCGCTGGGGCCCCAGAAGTGATCGCTCAGCTGGAGAACGCGGCTAAAGTTCTGATGG  
CACCACCTTCCATGGTCAATAATGAACAACGCCAGCATGCAGAGCACATATTCTTATCATTTAGGAAATC  
AAAATCACCATTTCAGTTTGAAGCATATTTGGAACTAGTAAAGTGGACTATGTCCTCTTTCAAGCT  
GCCACAGCCATAATGGAAGCAGTTGTCGAGAGTGGATTCTCTTGAAAAAGGTAGCATCGAGTCTCTGC  
GAACATTCCTTTAACCTATGTCTTACAAAGGCCAACCTTCAAAGTATGTTCCGGGAACAGATTCTACT  
AGCAGTAGCAGTAATTGTAAAAAGAGGATCATTAGATAAATCAATTGACTGCAAAAGCATTTCATGAA  
GTCAGCCAGTTGATTAGTAGTGGCAATCCCACTGTGCAAACCTCTGGCCTGTTCTATTCTGACTGCGCTAT  
TGAGTGAATTTCAAGTCAAGTAAAACAGCAACATTGGATTGAGCATGGAATTCATGGTAACTGCAA  
AAGAGTTTTTCAGGAAGAAGACCTTCGTCAGATCTTCAATGTTAACTGTTGAAGTTCTGCAGGAGTTCAGC  
AGGCGGAAAAACCTCAATGCTCAGATGTCTTCAATTTAGCAGTTACCTTGCACTCGCCAAATCAAGTCT  
TGAGCTGGAACCTTCTCCTCCAAATTTGGGCAGACATATATAGCTATGTTGAATCCTCGAAAAATGT  
GCTGTTGAAGCCAACAGAGTCTTGGCGGGAGACTCTTCTGGACAGCAGAGTTATGGAGCTTTTCTCACA  
GTACATCGAAAAATCAGAGAAGATTAGATATGGCACAAGATTCTGCACTGCGCTGCCCAGTTAGCTT  
CTCTTCATGGACCATCTTCCCAGATGAAGGATCACAAGTTGATTATCTAGCACACTTCATTGAGGGATT  
ACTGAATACTATCAATGGAATTGAAATAGAAGATTCTGAAGCTGTGGGATCTCCAGCATTATCAGCAAC  
CTGATAACCGTGTCCACGAAATGTTTAACTGCCATTCCAAGTGAACCTTTCTCCTCCTTTGTTAACT  
GCCTCACACACCTCACTTGTCTTTGGGCGAAGTGTGCTGATTGGAAGAAGTGTGATAAAGATGACAT  
GGTATACATGGAAGCATATGATAAATGTTGGAGTCTGGTTAACTTTGGTTCAAGATGACAAACATTTCC  
CATAAAGGCTTTTTACCCAACATGCAGTTCAAGTTTTCAATTCCTATATTCAGTGCCACCTAGCTGCTC  
CAGATGGCACAAGAAATTTGACTGCCAATGGTGTGGCCTCTCGTGAGGAGGAAGAAATAAGTGAACCTCA  
AGAGGATGATCGAGACCAGTTTTCTGATCAACTGGCCAGTGTAGGAATGCTAGGAAGAATTGCTGCAGAA



[View online >](#)

CACTGTATACCTCTTCTGACAAGTTTATTAGAAGAAAGAGTAACAAGACTCCATGGTCAGTTACAACGCAC  
ATCAGCAACAGTTACTTGCTTACCCGGGTTCAAGCACTGTTGACAACAAAATGCTTGATGATCTCTATGA  
AGATATTCAGTGGCTATTTTAGTTACAGGCTACCTCTTAGCTGATGATACTCAGGGAGAGACTCCGCTA  
ATACCTCCAGAAATAATGGAATATTCCATTAAGCATTATCTGAAGTTGACATTAATAACAACACTTCAA  
TTTTGGGATCTCCAGGAGAAAAGGCTTCTCCATCCCAGGGTACAACAGAACAGATTCTGTGATTAGGCT  
GTTGCTGCCATTCTCAGAGTTTCAGAAGTTGAATCTCGAGCAATAAGAGCAGATCTCACTCATCTACTA  
AGTCCCCAGATGGCAAAGATATTGTTTGGTTTTTAAAACGCTGGGCAAAGACTTATCTCCTGGTGGATG  
AAAAACTGTATGATCAGATAAGTCTGCCATTAGTACAGCGTTCCGAGCAGATACAGAGGGTTCTCAGTG  
GATAATTGGCTACCTCTTACAAAAGTCAATCAGTAACCTCTCAGTCTGGAGTAGTGAGCAGGACCTTGCA  
AATGACACTGTGCAGCTCCTTGTCACTTTGGTGGAAAAGAGAAAAGGGCAAACCTTAGTAATTCAATGTG  
AGAAGTGGTGGAAATTTAGCTAAGCAGTTTGAAGCCGAAGCCACCTTAAATTTCTGTCAAGTCTGT  
GCAGAGGACATTGATGAAGGCTTAGTCTTAGGAGTTTTGCACATATGGACACAGAAAACCAACAGCAG  
TATTGGACAGAGGTTCTCAGCCACTTCAGCAGCGATTCTTAAGAGTGATAAACCAAGAAAACCTCCAGC  
AGATGTGTGAGCAAGAGGAAGTCAAGCAGGAAATCACTGCCACACTAGAGGCCCTGTGTGCATTGCTGA  
GGCTACCCAGATTGACAACGTAGCAATCTGTTTAAATTTTTAATGGACTTCTTACCAATTGCATTGGA  
TTGATGGAAGTTTACAAGAATACCCAGAGACTGTCAATCTCATTATAGAAGTTTTTGTGAAAGTTGCAC  
ATAAACAGATATGCTATCTTGGAGAGTCCAAAGCTATGAACTTATATGAAGCCTGCCTTACTTTGTGCA  
AGTGTATTCTAAGAATAATTTAGGGCGGCAAAGAATAGATGTTACAGCAGAAGAAGAGCAATACCAAGAC  
CTGCTTCTCATTATGGAACCTTCTACTAACCTGCTGTCAAAGAATTCATAGATTTCAAGTATACAGATG  
AAGTGTTAGAGGACATGAGCCAGGTCAAGCAGCAAACAGATCTGTGTCAGCAGCGGATGTTGTGTTGTA  
TGGAGTAAACCTAATCTGCCCTTGATGTCACAGGATCTCTTGAAGTTTCCAACCCTTTGTAATCAGTAC  
TACAAATTAATCACATTTATCTGTGAGATTTTTCTGAAAAATACCACAGCTTCTGAGGATCTGTTTA  
AAAGCTGATGTACTCCCTAGAATTAGGAATGACATCAATGAGTTCGGAGGTTTGCAGCTTTGCCTGGA  
GGCCTTGACACCGTTAGCTGAACAGTGTGCAAAAAGCACAAGAAAACAGACTCACCCTTTTTCTAGCAACA  
CGGCACTTTCTTAAGCTGGTTTTGATATGCTGGTTTTGCAAAAGCACAACACAGAGATGACCACTGCGG  
CTGGCGAAGCTTTCTACACGTTGGTGTGTTGCAACCAGGCTGAATATTCTGAACTGGTCGAAACATTACT  
ATCAAGTCAGCAAGACCCAGTTATTTACCAGAGATTAGCAGATGCCTTCAACAAGCTCACTGCAAGCAGC  
ACTCCTCTACGCTGGATCGGAAGCAGAAGATGGCCTTCTAAAGAGTTTAGAAGAATTTATGGCAAATG  
TTGGTGGTCTCCTTTGTGTAATA

ACGCGTACGCGGCCGCTCGAGCAGAAAACCTCATCTCAGAAGAGGATCTGGCAGCAAATGATATCCTGGATT  
ACAAGGATGACGACGATAAGGTTTAA

**Protein Sequence:** >RC212569 representing NM\_022459  
Red=Cloning site Green=Tags(s)

```
MMAAALGPPEVIAQLENAAKVLMAPPSMVNNEQRQHAEHIFLSFRKSKSPFAVCKHILETSKVDYVLFQA
ATAIMEAVVREWILLEKGSIESLRTFLLTYVLQRPNLQKYVREQILLAVAVIVKRGSLDKSIDCKSIFHE
VSQLISSGNPTVQTLACISILTALLSEFSSSSKTSNIGLSMEFHGNCKRVFQEEDLRQIFMLTVEVLQEF
RRENLAQMSSVFQRYLALANQVLSWNFLPPNLGRHYIAMFESSQNVLLKPTESWRETLLDSRVMELFFT
VHRKIRESDMAQDSLQCLAQLASLHGPIFPDEGSQVDYLAHFIEGLLNTINGIEIEDSEAVGISSII SN
LITVFPNRVNLTAIPSELFSSFVNCLTHLTCSFGRSAALEEVLDKDDMVYMEAYDKLLESWLTLVQDDKHF
HKGFFTQHAVQVFNSYIQCHLAAPDGRNLTANGVASREEEIESELQEDDRDQFSDQLASVGMGRGIAAE
HCIPLLTSLLEERVTRLHGQLQRHQQLLASPGSSTVDNKMLDDLIEDIHWLILVTGYLLADDTQGETPL
IPPEIMEYSIKHSSEVDINTTLQILGSPGEKASSIPGYNRTDSVIRLLSAILRVSEVESRAIRADLTHLL
SPQMGKDIWVFLKRWAKTYLLVDEKLYDQISLPFSTAFGADTEGSQWIIIGYLLQKVISNLSVWSSEQDLA
NDTVQLLVTLVERRERANLVIQCENWWNLAKQFASRSPPLNFLSSPVQRTLKALVLLGGFAHMDTETKQQ
YWTEVLQPLQRFRLRVINQENFQQMCQQEEVKQEITATLEALCGIAEATQIDNVAILFNFLMDFLTNCIG
LMEVYKNTPETVNLIIIEVFVEVAHKQICYLGESKAMNLYEACL TLLQVYSKNNLGRQRIDVTAEEEEQYQD
LLLIMELLTNLLSKEFIDFSDTDEVFRGHEPGQAANRSVSAADVLYGVNLILPLMSQDLLKFTPLCNQY
YKLITFICEIFPEKIPQLPEDLFKSLMYSLELGMTSMSSEVCQLCLEALPLAEQCAKAQETDSPLFLAT
RHFLKLVDFMLVLQKHNTMTTAAAGEAFYTLVCLHQA EYSELVETLLSSQQDPVIYQRLADAFNKL TASS
TPPTLDRKQKMAFLKSLEEFMANVGLLCVK
```

TRTRPLEQKLISEEDLAANDILDYKDDDDKV

**Chromatograms:** [https://cdn.origene.com/chromatograms/mk8023\\_g02.zip](https://cdn.origene.com/chromatograms/mk8023_g02.zip)

**Restriction Sites:** SgfI-MluI

**Cloning Scheme:**

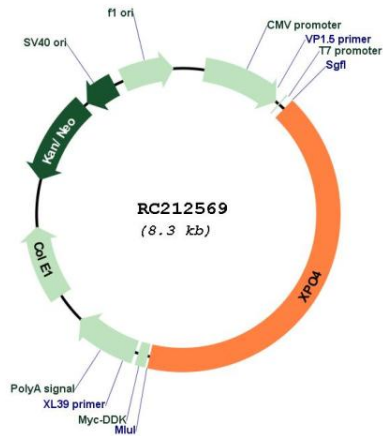


**ACCN:** NM\_022459

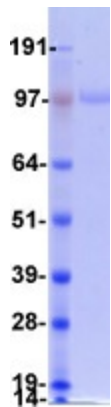
**ORF Size:** 3453 bp

|                               |   |
|-------------------------------|---|
| <b>OTI Disclaimer:</b>        | The molecular sequence of this clone aligns with the gene accession number as a point of reference only. However, individual transcript sequences of the same gene can differ through naturally occurring variations (e.g. polymorphisms), each with its own valid existence. This clone is substantially in agreement with the reference, but a complete review of all prevailing variants is recommended prior to use. <a href="#">More info</a>  |
| <b>OTI Annotation:</b>        | This clone was engineered to express the complete ORF with an expression tag. Expression varies depending on the nature of the gene.  |
| <b>Components:</b>            | The ORF clone is ion-exchange column purified and shipped in a 2D barcoded Matrix tube containing 10ug of transfection-ready, dried plasmid DNA (reconstitute with 100 ul of water).  |
| <b>Reconstitution Method:</b> | <ol style="list-style-type: none"><li>1. Centrifuge at 5,000xg for 5min.</li><li>2. Carefully open the tube and add 100ul of sterile water to dissolve the DNA.</li><li>3. Close the tube and incubate for 10 minutes at room temperature.</li><li>4. Briefly vortex the tube and then do a quick spin (less than 5000xg) to concentrate the liquid at the bottom.</li><li>5. Store the suspended plasmid at -20°C. The DNA is stable for at least one year from date of shipping when stored at -20°C.</li></ol> |
| <b>RefSeq:</b>                | <a href="#">NM_022459.4</a> , <a href="#">NP_071904.4</a>   |
| <b>RefSeq Size:</b>           | 9902 bp   |
| <b>RefSeq ORF:</b>            | 3456 bp   |
| <b>Locus ID:</b>              | 64328   |
| <b>UniProt ID:</b>            | <a href="#">Q9C0E2</a>  |
| <b>Cytogenetics:</b>          | 13q12.11  |
| <b>MW:</b>                    | 130 kDa   |
| <b>Gene Summary:</b>          | XPO4 belongs to a large family of karyopherins (see MIM 602738) that mediate the transport of proteins and other cargo between the nuclear and cytoplasmic compartments (Lipowsky et al., 2000 [PubMed 10944119]).[supplied by OMIM, Mar 2009]  |

Product images:



Circular map for RC212569



Coomassie blue staining of purified XPO4 protein (Cat# [TP312569]). The protein was produced from HEK293T cells transfected with XPO4 cDNA clone (Cat# RC212569) using MegaTran 2.0 (Cat# [TT210002]).