

Product datasheet for **RC212564**

DACT1 (NM_016651) Human Tagged ORF Clone

Product data:

Product Type:	Expression Plasmids
Product Name:	DACT1 (NM_016651) Human Tagged ORF Clone
Tag:	Myc-DDK
Symbol:	DACT1
Synonyms:	DAPPER; DAPPER1; DPR1; FRODO; HDPR1; TBS2; THYEX3
Mammalian Cell Selection:	Neomycin
Vector:	pCMV6-Entry (PS100001)
E. coli Selection:	Kanamycin (25 ug/mL)



[View online »](#)

ORF Nucleotide Sequence:

>RC212564 representing NM_016651
 Red=Cloning site Blue=ORF Green=Tags(s)

TTTTGTAATACGACTCACTATAGGGCGGCCGGGAATTCGTCGACTGGATCCGGTACCGAGGAGATCTGCC
 GCC**CGGATCGCC**

ATGAAGCCGAGTCCGGCCGGGACGGCGAAGGAGCTGGAGCCTCCGGCCGGCCCGAGGCGAGCAGCGCA
 CGGCGGAGCCCGAGGGGCGCTGGCGGGAGAAGGGCGAGGCAGACACCGAGCGGCAGCGCACCCGGGAGCG
 GCAGGAGGCCACGCTGGCCGGGCTGGCGGAGCTGGAGTACCTGCGCCAGCGCCAAGAGCTGCTGGTCAGG
 GGCGCCCTGCGCGGGCGCCGGGGTGGCGGAGCCGCTGCGCCCCGCGCTGGGGAGCTACTGGGGGAGGCGG
 CGCAGCGCAGTCGCTGGAGGAGAAGTTCTGGAGGAGAACATCTTGTGCTAAGAAAGCAATTGAAGT
 TTTGAGGCGAAGAGATGCTGGTTTGTGAATCAGTTGCAAGAGCTTGACAAGCAGATAAGTGACCTGAGA
 CTGGATGTAGAAAAGACATCTGAAGAGCACCTGGAGACAGACAGTCGGCCTAGCTCAGGGTTTTATGAGC
 TGAGTGATGGGGTTCAGGATCCCTTTCCAATTCTCTAACTCGGTGTTTCAGTGAGTGTTATCCAGTTG
 TCATTCCAGCACCTGCTTTTGCAGCCCCCTGGAGGCGACCTTGAGTCTCTCAGATGGTTGCCCAAATCT
 GCAGATCTCATAGGATTGTTGGAATATAAAGAAGGCCACTGTGAAGACCAGGCCTCAGGGGAGTTTGCC
 GTTCCCTCTCCACACCACAATTTAATTCCTTGATGTCATTGCAGATGTGAATCCCAAGTACCAGTGTGA
 TCTGGTGTCTAAAAACGGGAATGATGTATATCGCTATCCAGTCCACTTCATGCTGTGGCTGTGCAGAGC
 CCAATGTTTTCTCTTTGTCTGACGGGCAACCCTCTGAGGGAAGAGGACAGGCTTGAAACCATGCCAGTG
 ACATTTGCGGTGGATCTGAGCTAGATGCCGTCAAACAGACAGTTCCTTACCGTCCCCAAGCAGTCTGTG
 GTCTGCTTCCCATCCTTCATCCAGCAAGAAAATGGATGGCTACATTCTGAGCCTGGTCCAGAAAAAACA
 CACCCTGTAAGGACCAACAACCAAGAACCAGCGTGAACGCTGACCCACGAAAGGGCTTCTGAGGAACG
 GGCGTGTCTGCCCTCTGGCGGGATACCTTCTCTGAACAATGGGACATTCTCCCCACCGAAGCAGTGGTCTG
 AAAGAATCAAAGGCCGAACAAGCCGAAAGCAAGAGGGTGCCCTGCCAGAGGGCTGCCCTCAGGCGCTG
 CCTCCGACCTTCAGAGTAAGCACCTGCCAAAAACGGCCAAGCCAGCCTCGCAAGAACATGCTCGGTGTT
 CGCCATTGGGACAGGGGAGTCCCCTAAGGAAAGCGCTCAGCTCTCAGGGGCTCTCCAAAAGAGAGTCT
 AGCAGAGGCCCTGCCCGCCGAGGAGAACAAGTTGTACAGCCCTGAAAAAGATGTACAGAAAAACA
 GCCTGCAGGGCGTCCCCCGGCCACTCCTCCCCTGCTGTCTACAGCTTCCCGTGAAGAGAGGCCTGC
 CTTGGATTTCAAGAGCGAGGGCTCTTCCAAAGCCTGGAGGAAGCGCACCTGGTCAAGGCCAGTTTATC
 CGGGGCAGCAGCCAGTGTGAGCTCCACGGGGCCACAGGAACATGGGCGTGTGAAGAACTCCAGCC
 TGAAGCACCGCGCCAGCCCTCCAGGGGCTGGAGAACGCTTGCCACCGTCAAGGAGAAAAACGGGGC
 CGGGAGCAAGAAGTGTGCGTTCCAGATGACTTGATACAAATAAGAACTCAAGAAAGCCTCCTCCAAG
 GGGAGGAAGAGTGGGGCGGGCCCGAGGCTGGTGTTCGGGACAGGCCCGGGCGGGGGCCACAGGGCGG
 GGAGCAGGGCGCATGGCCACGGACGGGAGGCGGTGGTGGCCAAACCTAAGCACAAGCGAACTGACTACCG
 GCGGTGGAAGTCTCGGCCGAGATTTCTACGAAGAGGCCTGAGGAGGGCCCGGCGGTCGCCGGGAG
 AATGTGGGGTGTACCCCGCCTGTGCCTTGCCTACGCCAGCCCTACGCCTACGTGGCTAGCGACT
 CCGAGTACTCGGCCGAGTGGAGTCCCTGTTCCACTCCACCGTGGTGGACACCAGTGAGGACGAGCAGAG
 CAATTACACCACCACTGCTTCGGGGACAGCGAGTGTGAGTGTGAGCGAGGGCGAGTTCGTGGGGGAGAGC
 ACAACCACGAGCTCTGAAGAAAGCGGGGCTTAATTTGGTCCAGTTTGTCCAGACTCTGCCATTC
 AAACGGTAACGGCCCGAGACCTTACAACCACCCGCAAAAACCTTTGTCAAAATTAAGGCCTCACATAA
 CCTCAAGAAGAAGATCTCCGCTTTCGGTCTGGCTCTTTGAAACTGATGACGACGGTT

ACGCGTACGCGGCCGCTCGAGCAGAACTCATCTCAGAAGAGGATCTGGCAGCAATGATATCCTGGATT
 ACAAGGATGACGACGATAAGGTTTAA

Protein Sequence: >RC212564 representing NM_016651
 Red=Cloning site Green=Tags(s)

MKPSPAGTAKELEPPAPARGEQRTAEPEGRWREKGEADTERQRTREERQEATLAGLAELEYLRQRQELLVR
 GALRGAGGAGAAAPRAGELLGEEAQRSRLEEKFLEENILLRQQLNCLRRRDAGLLNQLQELDKQISDLR
 LDVEKTSEEHLETDSRPSSGFYELSDGASGSLSNSNSVVFSECLSSCHSSTCFCSPLEATLSLSDGCPKS
 ADLIGLLEYKEGHCEDQASGAVCRSLSTPQFNSLDVIADVNPKYQCDLVSKNGNDVYRYPSPHAAVAVQS
 PMFLLCLTGNPLREEDRLGNHSDICGGSELDVKTDSLLPSPSSLWSASHPSSSKKMDGYILSLVQKKT
 HPVRTNKPRTSVNADPTKGLLRNGSVCVRAPGGVSQGNVNLKNSKQACLPSGGIPSLNNGTFSPPKQWS
 KESKAEQAESKRVPVPEGCPSGAASDLQSKHLPKTAKPASQEHARCSAIGTGESPKESAQLSGASPKESP
 SRGPAPPQENKVVQPLKKMSQKNSLQGVPPATPPLLSTAFPVEERPALDFKSEGSSQSLEEAHLVKAQFI
 PGQQPSVRLHRGHRNMGVVKNSSLKHRGPALQGLENGLPTVREKTRAGSKKCRFPDDLDTNKKLKKASSK
 GRKSGGPEAGVPGRPAGGGHRAGSRAHGHEAVVAKPKHKRTDYRRWKSSAEISYEEALRRARRGRRE
 NVGLYPAPVPLPYASPYAVVASDSEYSAECESLFHSTVVDTSSEDEQSNTTNCFGDSESSVSEGEFVGES
 TTTSDSEESGGLIWSQFVQTLPIQTVTAPDLHNHPAKTFVKIKASHNLKKKILFRSGSLKLMTTY

TRTRPLEQKLISEEDLAANDILDYKDDDDKV

Restriction Sites: Sgfl-MluI

Reconstitution Method:

1. Centrifuge at 5,000xg for 5min.
2. Carefully open the tube and add 100ul of sterile water to dissolve the DNA.
3. Close the tube and incubate for 10 minutes at room temperature.
4. Briefly vortex the tube and then do a quick spin (less than 5000xg) to concentrate the liquid at the bottom.
5. Store the suspended plasmid at -20°C. The DNA is stable for at least one year from date of shipping when stored at -20°C.

RefSeq: [NM_016651.6](#)

RefSeq Size: 3775 bp

RefSeq ORF: 2511 bp

Locus ID: 51339

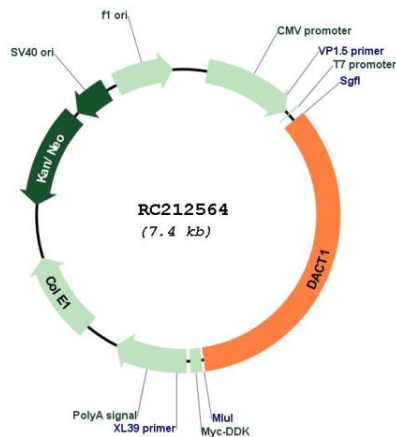
UniProt ID: [Q9NYF0](#)

Cytogenetics: 14q23.1

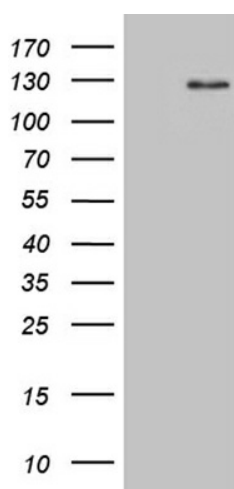
MW: 90 kDa

Gene Summary: The protein encoded by this gene belongs to the dapper family, characterized by the presence of PDZ-binding motif at the C-terminus. It interacts with, and positively regulates dishevelled-mediated signaling pathways during development. Depletion of this mRNA from xenopus embryos resulted in loss of notochord and head structures, and mice lacking this gene died shortly after birth from severe posterior malformations. Alternatively spliced transcript variants have been found for this gene. [provided by RefSeq, Jan 2012]

Product images:



Circular map for RC212564



HEK293T cells were transfected with the pCMV6-ENTRY control (Cat# [PS100001], Left lane) or pCMV6-ENTRY DACT1 (Cat# RC212564, Right lane) cDNA for 48 hrs and lysed. Equivalent amounts of cell lysates (5 ug per lane) were separated by SDS-PAGE and immunoblotted with anti-DACT1 (Cat# [TA809156])(1:2000).