

Product datasheet for RC212562

FIGLA (NM_001004311) Human Tagged ORF Clone

Product data:

| | |
|---------------------------|--|
| Product Type: | Expression Plasmids |
| Product Name: | FIGLA (NM_001004311) Human Tagged ORF Clone |
| Tag: | Myc-DDK |
| Symbol: | FIGLA |
| Synonyms: | BHLHC8; FIGALPHA; POF6 |
| Mammalian Cell Selection: | Neomycin |
| Vector: | pCMV6-Entry (PS100001) |
| E. coli Selection: | Kanamycin (25 ug/mL) |
| ORF Nucleotide Sequence: | >RC212562 representing NM_001004311 Red=Cloning site Blue=ORF Green=Tags(s) |

TTTTGTAATACGACTCACTATAGGGCGGCCGGAATTCGTCGACTGGATCCGGTACCGAGGAGATCTGCC
 GCCGCGATCGCC

ATGGACCCCGCGCCCGCGCTCTAGATCCCGCGCCGCGCCCGCGCTCCTGGGCACCCCGCAAGCCG
 AGGTGCTGGAGGACGTGTTGCGGGAGCAGTTCGGGCGCTGCCCCAGCTGGCCGCTGTCTGCCGGCTCAA
 GCGGCTGCCCTCGGGCGGCTACTCGTCCACTGAAACCTCCAGTTGGTGCTGGAGCGCGCGCTGTGGCC
 AACGCCAAGGAGCGTGAGCGGATAAAAAATCTCAACCGTGGTTTTGCCAGATTGAAGGCACTTGTGCCAT
 TTCTTCCCAAAGCAGGAAGCCAGCAAAGTTGATATCCTTAAAGGTGCGACTGAATATATACAGGTTCT
 CAGTGATCTTTTGAAGGAGCCAAAGACTCAAAGAAACAAGACCCAGATGAGCAGAGCTATAGTAACAAC
 AGTTCTGAATCACATACATCCTCGGCAAGACAGCTGTCAAGAAACATCACCCAACATATCAGCTGTGCTT
 TCGGCTTGAAGAATGAAGAGGAAGGGCCTTGGGCAGATGGTGGCAGTGGTGAGCCAGCACACGCTTGTGC
 CCACAGTGTGATGTCTACGACTGAAATTATCTCCCAACCAGAAGTCTGGATAGATTCCAGAAGTAGAA
 CTGCTGAGTCACAGACTTCCACAAGTA

ACGCGTACGCGGCCGCTCGAGCAGAACTCATCTCAGAAGAGGATCTGGCAGCAAATGATATCCTGGATT
 ACAAGGATGACGACGATAAGGTTTAA


[View online »](#)

Protein Sequence: >RC212562 representing NM_001004311

Red=Cloning site Green=Tags(s)

MDPAPGVLDPRAAPPALLGTPQAEVLVDLREQFGPLPQLAAVCRCLKRLPSGGYSTENLQLVLERRRVA
NAKERERIKNLNRGFARLKVLPFLPQSRKPSKVDILKGATEYIQVLSDLLEGAKDSKKQDPDEQSYSNN
SSESHTSSARQLSRNITQHISCAFLKNEEGPWADGGSGEPAHACRHSVMSTTEIIISPTRSLDRFPEVE
LLSHRLPOV

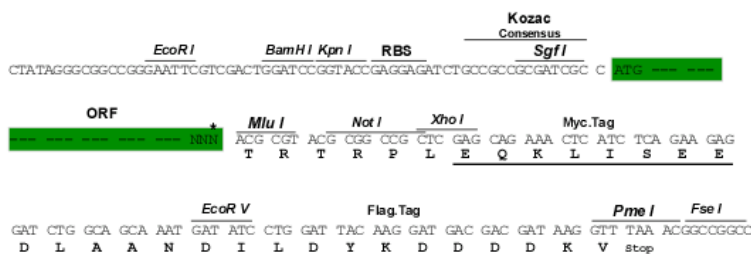
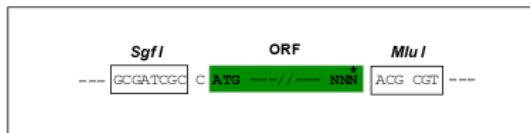
TRTRPLEOKLISEEDLAANDILDYKDDDDKV

Chromatograms: https://cdn.origene.com/chromatograms/mk8023_g05.zip

Restriction Sites: Sgfl-MluI

Cloning Scheme:

Cloning sites used for ORF Shuttling:



* The last codon before the Stop codon of the ORF

ACCN: NM 001004311

ORF Size: 657 bp

OTI Disclaimer: The molecular sequence of this clone aligns with the gene accession number as a point of reference only. However, individual transcript sequences of the same gene can differ through naturally occurring variations (e.g. polymorphisms), each with its own valid existence. This clone is substantially in agreement with the reference, but a complete review of all prevailing variants is recommended prior to use. [More info](#)

OTI Annotation: This clone was engineered to express the complete ORF with an expression tag. Expression varies depending on the nature of the gene.

Components: The ORF clone is ion-exchange column purified and shipped in a 2D barcoded Matrix tube containing 10ug of transfection-ready, dried plasmid DNA (reconstitute with 100 ul of water).

Reconstitution Method:

1. Centrifuge at 5,000xg for 5min.
2. Carefully open the tube and add 100ul of sterile water to dissolve the DNA.
3. Close the tube and incubate for 10 minutes at room temperature.
4. Briefly vortex the tube and then do a quick spin (less than 5000xg) to concentrate the liquid at the bottom.
5. Store the suspended plasmid at -20°C. The DNA is stable for at least one year from date of shipping when stored at -20°C.

Note: Plasmids are not sterile. For experiments where strict sterility is required, filtration with 0.22um filter is required.

RefSeq: [NM_001004311.3](#)

RefSeq Size: 724 bp

RefSeq ORF: 660 bp

Locus ID: 344018

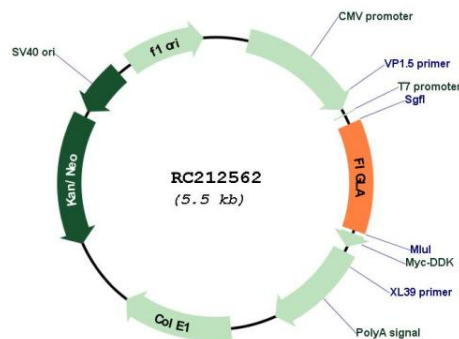
UniProt ID: [Q6QHK4](#)

Cytogenetics: 2p13.3

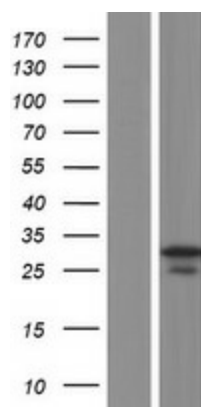
MW: 23.9 kDa

Gene Summary: This gene encodes a protein that functions in postnatal oocyte-specific gene expression. The protein is a basic helix-loop-helix transcription factor that regulates multiple oocyte-specific genes, including genes involved in folliculogenesis and those that encode the zona pellucida. Mutations in this gene cause premature ovarian failure type 6. [provided by RefSeq, Sep 2009]

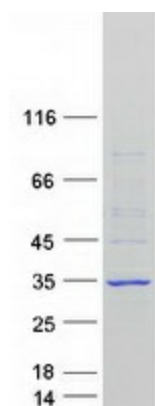
Product images:



Circular map for RC212562



Western blot validation of overexpression lysate (Cat# [LY424087]) using anti-DDK antibody (Cat# [TA50011-100]). Left: Cell lysates from untransfected HEK293T cells; Right: Cell lysates from HEK293T cells transfected with RC212562 using transfection reagent MegaTran 2.0 (Cat# [TT210002]).



Coomassie blue staining of purified FIGLA protein (Cat# [TP312562]). The protein was produced from HEK293T cells transfected with FIGLA cDNA clone (Cat# RC212562) using MegaTran 2.0 (Cat# [TT210002]).