

## Product datasheet for **RC212556**

### **SLC25A25 (NM\_001006641) Human Tagged ORF Clone**

#### **Product data:**

Product Type:	Expression Plasmids
Product Name:	SLC25A25 (NM_001006641) Human Tagged ORF Clone
Tag:	Myc-DDK
Symbol:	SLC25A25
Synonyms:	MCSC; PCSCL; SCAMC-2
Mammalian Cell Selection:	Neomycin
Vector:	pCMV6-Entry (PS100001)
E. coli Selection:	Kanamycin (25 ug/mL)



[View online »](#)

**ORF Nucleotide Sequence:**

>RC212556 representing NM\_001006641  
 Red=Cloning site Blue=ORF Green=Tags(s)

TTTTGTAATACGACTCACTATAGGGCGGCCGGAATTCGTCGACTGGATCCGGTACCGAGGAGATCTGCC  
 GCC**CGGATCGCC**

ATGGTGAGCAGTGTGTTGTGCCGTGTGTGGCCTCCCCGCGCCGGACGCCGCCACCGCCCTCTT  
 CGTCTGCCTCATCGCCGGCGTCCGTGGGGACCCCTGCGGCGGCCTATCTGCGGGGCCGGACACCG  
 GCTGCGCCTGTGGAGACTCTTTCAGACGCTCGACGTCAACCGGGACGGCGCCTGTGTGTCAACGACCTG  
 GCGGTGGGGCTGCGGCGCCTGGGACTGCACCGCACCGAGGGCGAGCTCCAGAAAATTGTACAAGCTGGAG  
 ATAAGGACCTTGATGGGCAGCTAGACTTTGAAGAATTTGCCATTATCTCCAAGATCATGAGAAGAAGCT  
 GAGGCTGGTGTAAAGAGTTTGGACAAAAAGAATGATGGACGATTGACGCGCAGGAGATCATGCAGTCC  
 CTGCGGGACTTGGGAGTCAAGATATCTGAACAGCAGGCAGAAAAAATTCTCAAGAGCATGGATAAAACG  
 GCACGATGACCATTGACTGGAACGAGTGGAGAGACTACCACCTCCTCCACCCCGTGGAAAACATCCCCGA  
 GATCATCTCTACTGGAAGCATTCCACGATCTTTGATGTGGTGAGAATCTAACGGTCCCGGATGAGTTC  
 ACAGTGGAGGAGAGGCAGACGGGGATGTGGTGGAGACACCTGGTGGCAGGAGGTGGGGCAGGGGCCGTAT  
 CCAGAACCTGCACGGCCCCCTGGACAGCTCAAGGTGCTCATGCAGGTCATGCCTCCCGCAGCAACAA  
 CATGGGCATCGTTGGTGGCTTCACTCAGATGATTGAGAAAGGAGGGGCCAGGTCCTGCGGGGCAAT  
 GGCATCAACGTCCTCAAATTTGCCCCGAATCAGCCATCAAATTCATGGCCTATGAGCAGATCAAGCGCC  
 TTGTTGGTAGTGACCAGGAGACTCTGAGGATCACGAGAGGCTTGTGGCAGGGTCTTGGCAGGGGCCAT  
 CGCCAGAGCAGCATCTACCAATGGAGGTCCTGAAGACCCGGATGGCGCTGCGGAAGACAGGCCAGTAC  
 TCAGGAATGCTGGACTGCGCCAGGAGGATCTGGCCAGAGAGGGGGTGGCCGCTTCTACAAAGGCTATG  
 TCCCAACATGCTGGGCATATCCCTATGCCGGCATCGACCTTGCACTACGAGACGCTCAAGAATGC  
 CTGGCTGCAGCACTATGCAGTGAACAGCAGCGGACCCCGCGTGTGTGTCTCTGGCCTGTGGCACCATG  
 TCCAGTACCTGTGGCCAGCTGGCCAGCTACCCCTGGCCCTAGTCAGGACCCGGATGCAGGCGCAAGCCT  
 CTATTGAGGGCGCTCCGGAGGTGACCATGAGCAGCCTCTCAAACATATCCTGCGGACCGAGGGGCCCTT  
 CGGGCTGTACAGGGGGCTGGCCCCAATTCATGAAGGTCATCCAGCTGTGAGCATCAGCTACGTGGTC  
 TACGAGAACCTGAAGATCACCTGGGCGTGCACTCGCGG

**ACGCGT**ACGCGGCCGCTCGAGCAGAACTCATCTCAGAAGAGGATCTGGCAGCAAATGATATCTGGATT  
 ACAAGGATGACGACGATAAGGTTTAA

**Protein Sequence:**

>RC212556 representing NM\_001006641  
 Red=Cloning site Green=Tags(s)

MVSSVLCRCVASPPPDAAATAASSASSPASVGDPCGGAI CGGPDHRLRLWRLFQTL DVNRDGGLCVNDL  
 AVGLRRLGLHRTEGELQKIVQAGDKLDGQLDFEEFVHYLQDHEKKLRLVFKSLDKKNDGRIDAQEIMQS  
 LRDLGVKISEQAEKILKSMKNGTMTIDWNEWRYHLLHPVENIPEIILYWKHSTIFDVGENLTPDEF  
 TVEERQTMWWRHLVAGGAGAVSRTCTAPLDRLKVLQVHASRSNNMGI VGGFTQMIREGGARSLWRGN  
 GINVLKIAPESAIKFMAYEQIKRLVGSQETLRIHERLVAGSLAGIAQSSIYPMEVLKTRMALRKTGQY  
 SGMLDCARRILAREGVAAFYKGYVPNMLGIIPYAGIDLAVYETLKNWLQHYAVNSADPGVFVLLACGTM  
 SSTCGQLASYPLALVRTRMQAASIEGAPEVTMSSLFKHILRTEGAFGLYRGLAPNFMKVIPAVSISYVV  
 YENLKITLGVQSR

**TRTRPLEQKLI**SEEDLAANDILDYKDDDDKV

**Chromatograms:**

[https://cdn.origene.com/chromatograms/mk8063\\_h04.zip](https://cdn.origene.com/chromatograms/mk8063_h04.zip)

**Restriction Sites:**

SgfI-MluI

Cloning Scheme:



ACCN: NM\_001006641

ORF Size: 1509 bp

OTI Disclaimer: The molecular sequence of this clone aligns with the gene accession number as a point of reference only. However, individual transcript sequences of the same gene can differ through naturally occurring variations (e.g. polymorphisms), each with its own valid existence. This clone is substantially in agreement with the reference, but a complete review of all prevailing variants is recommended prior to use. [More info](#)

OTI Annotation: This clone was engineered to express the complete ORF with an expression tag. Expression varies depending on the nature of the gene.

Components: The ORF clone is ion-exchange column purified and shipped in a 2D barcoded Matrix tube containing 10ug of transfection-ready, dried plasmid DNA (reconstitute with 100 ul of water).

- Reconstitution Method:
1. Centrifuge at 5,000xg for 5min.
  2. Carefully open the tube and add 100ul of sterile water to dissolve the DNA.
  3. Close the tube and incubate for 10 minutes at room temperature.
  4. Briefly vortex the tube and then do a quick spin (less than 5000xg) to concentrate the liquid at the bottom.
  5. Store the suspended plasmid at -20°C. The DNA is stable for at least one year from date of shipping when stored at -20°C.

RefSeq: [NM\\_001006641.2](#)

RefSeq Size: 3433 bp

RefSeq ORF: 1512 bp

Locus ID: 114789

UniProt ID: [Q6KCM7](#)

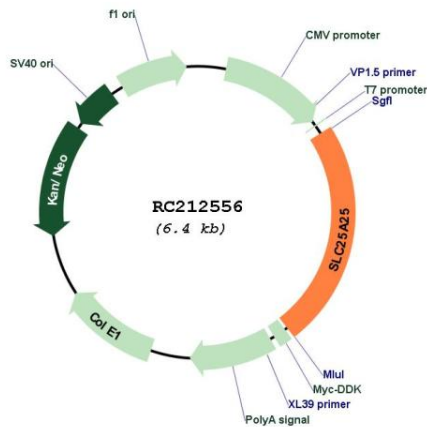
Cytogenetics: 9q34.11

**Protein Families:** Druggable Genome

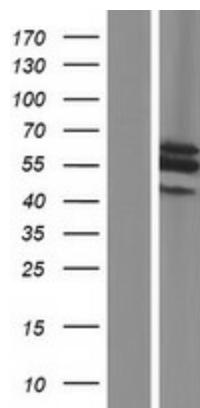
**MW:** 55.2 kDa

**Gene Summary:** The protein encoded by this gene belongs to the family of calcium-binding mitochondrial carriers, with a characteristic mitochondrial carrier domain at the C-terminus. These proteins are found in the inner membranes of mitochondria, and function as transport proteins. They shuttle metabolites, nucleotides and cofactors through the mitochondrial membrane and thereby connect and/or regulate cytoplasm and matrix functions. This protein may function as an ATP-Mg/Pi carrier that mediates the transport of Mg-ATP in exchange for phosphate, and likely responsible for the net uptake or efflux of adenine nucleotides into or from the mitochondria. Alternatively spliced transcript variants encoding different isoforms with a common C-terminus but variable N-termini have been described for this gene. [provided by RefSeq, Jul 2012]

**Product images:**



Circular map for RC212556



Western blot validation of overexpression lysate (Cat# [LY423537]) using anti-DDK antibody (Cat# [TA50011-100]). Left: Cell lysates from untransfected HEK293T cells; Right: Cell lysates from HEK293T cells transfected with RC212556 using transfection reagent MegaTran 2.0 (Cat# [TT210002]).