

Product datasheet for **RC212553**

SGCE (NM_001099400) Human Tagged ORF Clone

Product data:

Product Type:	Expression Plasmids
Product Name:	SGCE (NM_001099400) Human Tagged ORF Clone
Tag:	Myc-DDK
Symbol:	SGCE
Synonyms:	DYT11; epsilon-SG; ESG
Mammalian Cell Selection:	Neomycin
Vector:	pCMV6-Entry (PS100001)
E. coli Selection:	Kanamycin (25 ug/mL)



[View online »](#)

ORF Nucleotide Sequence:

>RC212553 representing NM_001099400
 Red=Cloning site Blue=ORF Green=Tags(s)

TTTTGTAATACGACTCACTATAGGGCGGCCGGAATTCGTCGACTGGATCCGGTACCGAGGAGATCTGCC
 GCC**GCGATCGCC**

ATGCAATTGCCCGGTGGTGGGAGCTGGGAGACCCTGTCTTGGACGGGACAGGGTCGGGGACACGCA
 GGATGAGCCCCGCGACCACTGGCACATTCTTGCTGACAGTGTACAGTATTTCTCCAAGGTACACTCCGA
 TCGGAGTGTATACCCATCAGCAGGTGTCCTCTTTGTTTCATGTTTTGAAAAGAGAATATTTAAGGGGAA
 TTTCCACCTTACCCAAAACCTGGCGAGATTAGTAATGATCCCATAACATTTAATACAAATTAATGGGTT
 ACCCAGACCGACCTGGATGGCTTCGATATATCCAAAGGACACCATATAGTGATGGAGTCTATATGGGTC
 CCCAACAGCTGAAAATGTGGGAAGCCAACAATCATTGAGATAACTGCCTACAACAGGCGCACCTTTGAG
 ACTGCAAGGCATAATTTGATAATTAATAATGTCTGCAGAAGACTTCCCGTTGCCATATCAAGCAGAAT
 TCTTCATTAAGAATATGAATGTAGAAGAAATGTTGGCCAGTGAGGTTCTTGGAGACTTTCTTGGCGCAGT
 GAAAAATGTGTGGCAGCCAGAGCGCCTGAACGCCATAAACATCACATCGGCCCTAGACAGGGGTGGCAGG
 GTGCCACTTCCCATAATGACCTGAAGGAGGGCGTTTATGTCATGGTTGGTGCAGATGTCCCGTTTTCTT
 CTGTGTTACGAGAAGTTGAAAATCCACAGAATCAATTGAGATGTAGTCAAGAAATGGAGCCTGTAATAAC
 ATGTGATAAAAAATTTCTGTAACAATTTACATTGACTGGTGCAAAAATTTATTGGTTGATAAAACAAAG
 CAAGTGTCCACCTATCAGGAAGTGATTCGTGGAGAGGGGATTTACCTGATGGTGGAGAATACAAACCC
 CTTCTGATTCTTTGAAAAGCAGAGACTATTACACGGATTTCTAATTACACTGGCTGTGCCCTCGGCAGT
 GGCAGTGGTCTTTTTCTAATACTTGCTTATATCATGTCTGCCAGCGGAAGGCGTCATCCAACGGTC
 CATCACAGTGTATTAGAAAATCTACCAAGGAGCTTCGAGACATGTCCAAGAATAGAGAGATAGCATGGC
 CCCTGTCAACGCTTCTGTGTTCCACCTGTGACTGGGAAATCATAACATCCTTTACACACAGACAATA
 TGATAGCACAAAACATGCCATTGATGCAAAACGACGAGAAGTTCACATCAGACTCAGATTCACCAACAG
 CAGACTACAGGAGATTTTCGTTTGACAACCTTTCAAAGATTTGAGGTAATGGTATCCCTGAAGAAAGAA
 AACTGACTGAAGCAATGAATTTA

ACGCGTACGCGGCCGCTCGAGCAGAACTCATCTCAGAAGAGGATCTGGCAGCAAATGATATCCTGGATT
 ACAAGGATGACGACGATAAGGTTTAA

Protein Sequence:

>RC212553 representing NM_001099400
 Red=Cloning site Green=Tags(s)

MQLPRWELGDPCAWTGQGRGTRRMSPATTGTFLLTVYSIFSKVHSDRSVYPSAGVLFVHVLEREYFKGE
 FPPYPKPEISNDPITFNTNLMGYDRPGWLRYSIQRTYSDGVL YGSPTAENVGKPTIIIEITAYNRRTFE
 TARHNLIIINIMSAEDFPLPYQAEFFIKNMNVEEMLASEVLGDFLGAVKNVWQPERLNAINITSALDRGGR
 VPLPINDLKEGVYVMVGADVPFSSCLREVENPQNQLRCSQEMEPVITCDKKFRTQFYIDWCKISLVDKTK
 QVSTYQEVIRGEGILPDGGEYKPPSLSKSRDYITDFLITLAVPSAVALVFLILAYIMCCRREGVIQLV
 HHSAIQKSTKELRDMKNREIAWPLSTLPVHPVTGEIIHPLHTDNYDSTNMPLMQTQQLPHQTQIPQQ
 QTTGDFRLTTFQRFVNGIPEERKLTAMNL

TRTRPLEQKLISEEDLAANDILDYKDDDDKV

Chromatograms:

https://cdn.origene.com/chromatograms/mg3750_f06.zip

Restriction Sites:

Sgfl-Mlul

Cloning Scheme:


ACCN: NM_001099400

ORF Size: 1353 bp

OTI Disclaimer: The molecular sequence of this clone aligns with the gene accession number as a point of reference only. However, individual transcript sequences of the same gene can differ through naturally occurring variations (e.g. polymorphisms), each with its own valid existence. This clone is substantially in agreement with the reference, but a complete review of all prevailing variants is recommended prior to use. [More info](#)

OTI Annotation: This clone was engineered to express the complete ORF with an expression tag. Expression varies depending on the nature of the gene.

Components: The ORF clone is ion-exchange column purified and shipped in a 2D barcoded Matrix tube containing 10ug of transfection-ready, dried plasmid DNA (reconstitute with 100 ul of water).

Reconstitution Method:

1. Centrifuge at 5,000xg for 5min.
2. Carefully open the tube and add 100ul of sterile water to dissolve the DNA.
3. Close the tube and incubate for 10 minutes at room temperature.
4. Briefly vortex the tube and then do a quick spin (less than 5000xg) to concentrate the liquid at the bottom.
5. Store the suspended plasmid at -20°C. The DNA is stable for at least one year from date of shipping when stored at -20°C.

RefSeq: [NM_001099400.1](#), [NP_001092870.1](#)

RefSeq Size: 1717 bp

RefSeq ORF: 1356 bp

Locus ID: 8910

UniProt ID: [O43556](#)

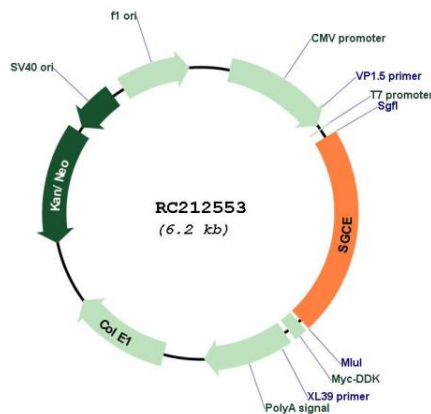
Cytogenetics: 7q21.3

Protein Families: Transmembrane

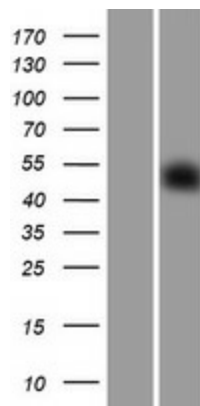
MW: 51.2 kDa

Gene Summary: This gene encodes the epsilon member of the sarcoglycan family. Sarcoglycans are transmembrane proteins that are components of the dystrophin-glycoprotein complex, which link the actin cytoskeleton to the extracellular matrix. Unlike other family members which are predominantly expressed in striated muscle, the epsilon sarcoglycan is more broadly expressed. Mutations in this gene are associated with myoclonus-dystonia syndrome. This gene is imprinted, with preferential expression from the paternal allele. Alternatively spliced transcript variants encoding different isoforms have been found for this gene. A pseudogene associated with this gene is located on chromosome 2. [provided by RefSeq, Oct 2016]

Product images:



Circular map for RC212553



Western blot validation of overexpression lysate (Cat# [LY420437]) using anti-DDK antibody (Cat# [TA50011-100]). Left: Cell lysates from untransfected HEK293T cells; Right: Cell lysates from HEK293T cells transfected with RC212553 using transfection reagent MegaTran 2.0 (Cat# [TT210002]).