

Product datasheet for RC212547

Kallikrein 11 (KLK11) (NM_144947) Human Tagged ORF Clone

Product data:

Product Type:	Expression Plasmids
Product Name:	Kallikrein 11 (KLK11) (NM_144947) Human Tagged ORF Clone
Tag:	Myc-DDK
Symbol:	Kallikrein 11
Synonyms:	PRSS20; TLSP
Mammalian Cell Selection:	Neomycin
Vector:	pCMV6-Entry (PS100001)
E. coli Selection:	Kanamycin (25 ug/mL)
ORF Nucleotide Sequence:	>RC212547 representing NM_144947 Red=Cloning site Blue=ORF Green=Tags(s)

TTTTGTAATACGACTCACTATAGGGCGGCCGGAATTCGTCGACTGGATCCGGTACCGAGGAGATCTGCC
GCC**CGATCGCC**

ATGCAGAGTTGAGGTGGCTGCGGGACTGGAAGTCATCGGGCAGAGGTCTCACAGCAGCCAAGGAACCTG
GGGCCGCTCCTCCCCCTCCAGGCCATGAGGATTCTGCAGTTAATCCTGCTTGCCTGGCAACAGGGCT
TGTAGGGGAGAGACCAGGATCATCAAGGGTTCGAGTCAAGCCTCACTCCAGCCCTGGCAGGCAGCC
CTGTTGAGAAGACGCGCTACTCTGTGGGGCAGCCTCATCGCCCCAGATGGCTCCTGACAGCAGCCC
ACTGCCTCAAGCCCCGTACATAGTTACCTGGGGCAGCACAACCTCCAGAAGGAGGAGGGCTGTGAGCA
GACCCGGACAGCCACTGAGTCCTTCCCCACCCCGGCTTCAACAACAGCCTCCCCAACAAAGACCACCGC
AATGACATCATGCTGGTGAAGATGGCATCGCCAGTCTCCATCACCTGGGCTGTGCGACCCCTCACCCCT
CCTCACGCTGTGCTACTGCTGGCACCAGCTGCCTCATTCCGGCTGGGGCAGCAGTCCAGCCCCAGTT
ACGCTGCCTCACACCTTGCATGCGCCAAATCACCATCATTGAGCACCAGAAGTGTGAGAACGCCTAC
CCCGGCAACATCACAGACACCATGGTGTGTGCCAGCGTGCAGGAAGGGGGCAAGGACTCCTGCCAGGGT
ACTCCGGGGCCCTCTGGTCTGTAAACAGTCTCTCAAGGCATTATCTCCTGGGGCCAGGATCCGTGTGC
GATCACCCGAAAGCCTGGTGTCTACACGAAAGTCTGCAAAATATGTGGACTGGATCCAGGAGACGATGAAG
AACAAT

ACGCGTACGCGGGCCGCTCGAGCAGAAACTCATCTCAGAAGAGGATCTGGCAGCAAATGATATCCTGGATT
ACAAGGATGACGACGATAAGGTTAA



[View online »](#)

Protein Sequence: >RC212547 representing NM_144947
 Red=Cloning site Green=Tags(s)

MQRLRWLRDWKSSGRGLTAAKEPGARSSPLQAMRILQLILLALATGLVGGETRIIKGFCECKPHSQPWQAA
 LFEKTRLLCGATLIAPRWLLTAAHCLKPRYIVHLGQHNLQKEEGCEQTRTATESFPHPGFNNSLPNKDHR
 NDIMLVKMASPVSTITWAVRPLTLSSRCVTAGTSLISGWGSTSSPQLRPLPHTLRCANITIIIEHQKCNAY
 PGNITDTMVCASVQEGGKDSQCQDSSGGPLVCNQSLQGIISWGDPCAITRKPQVYTKVCKYVDWIQETMK
 NN

TRTRPLEQKLISEEDLAANDILDYKDDDDKV

Chromatograms: https://cdn.origene.com/chromatograms/mg4796_h02.zip

Restriction Sites: SgfI-MluI

Cloning Scheme:



ACCN: NM_144947

ORF Size: 846 bp

OTI Disclaimer: The molecular sequence of this clone aligns with the gene accession number as a point of reference only. However, individual transcript sequences of the same gene can differ through naturally occurring variations (e.g. polymorphisms), each with its own valid existence. This clone is substantially in agreement with the reference, but a complete review of all prevailing variants is recommended prior to use. [More info](#)

OTI Annotation: This clone was engineered to express the complete ORF with an expression tag. Expression varies depending on the nature of the gene.

Components: The ORF clone is ion-exchange column purified and shipped in a 2D barcoded Matrix tube containing 10ug of transfection-ready, dried plasmid DNA (reconstitute with 100 ul of water).

Reconstitution Method:

1. Centrifuge at 5,000xg for 5min.
2. Carefully open the tube and add 100ul of sterile water to dissolve the DNA.
3. Close the tube and incubate for 10 minutes at room temperature.
4. Briefly vortex the tube and then do a quick spin (less than 5000xg) to concentrate the liquid at the bottom.
5. Store the suspended plasmid at -20°C. The DNA is stable for at least one year from date of shipping when stored at -20°C.

RefSeq: [NM_144947.3](#)

RefSeq Size: 1289 bp

RefSeq ORF: 849 bp

Locus ID: 11012

UniProt ID: [Q9UBX7](#)

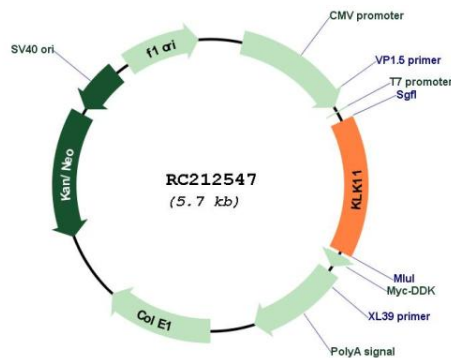
Cytogenetics: 19q13.41

Protein Families: Druggable Genome, Protease, Secreted Protein

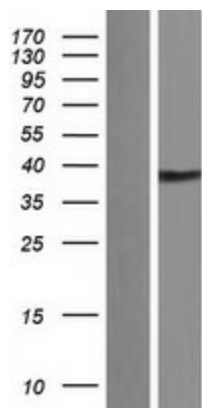
MW: 30.9 kDa

Gene Summary: Kallikreins are a subgroup of serine proteases having diverse physiological functions. Growing evidence suggests that many kallikreins are implicated in carcinogenesis and some have potential as novel cancer and other disease biomarkers. This gene is one of the fifteen kallikrein subfamily members located in a cluster on chromosome 19. Alternate splicing and the use of alternate promoters results in multiple transcript variants encoding distinct isoforms which are differentially expressed. [provided by RefSeq, Dec 2016]

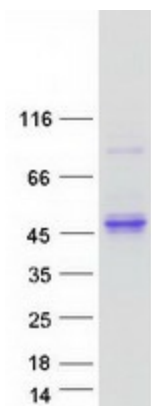
Product images:



Circular map for RC212547



Western blot validation of overexpression lysate (Cat# [LY408096]) using anti-DDK antibody (Cat# [TA50011-100]). Left: Cell lysates from untransfected HEK293T cells; Right: Cell lysates from HEK293T cells transfected with RC212547 using transfection reagent MegaTran 2.0 (Cat# [TT210002]).



Coomassie blue staining of purified KLK11 protein (Cat# [TP312547]). The protein was produced from HEK293T cells transfected with KLK11 cDNA clone (Cat# RC212547) using MegaTran 2.0 (Cat# [TT210002]).