

Product datasheet for RC212546L1

IL20 Receptor alpha (IL20RA) (NM_014432) Human Tagged Lenti ORF Clone

Product data:

Product Type:	Expression Plasmids
Product Name:	IL20 Receptor alpha (IL20RA) (NM_014432) Human Tagged Lenti ORF Clone
Tag:	Myc-DDK
Symbol:	IL20 Receptor alpha
Synonyms:	CRF2-8; IL-20R-alpha; IL-20R1; IL-20RA
Mammalian Cell Selection:	None
Vector:	pLenti-C-Myc-DDK (PS100064)
E. coli Selection:	Chloramphenicol (34 ug/mL)
ORF Nucleotide Sequence:	The ORF insert of this clone is exactly the same as(RC212546).
Restriction Sites:	SgfI-MluI
Cloning Scheme:	

Cloning sites used for ORF Shuttling:



* The last codon before the Stop codon of the ORF.

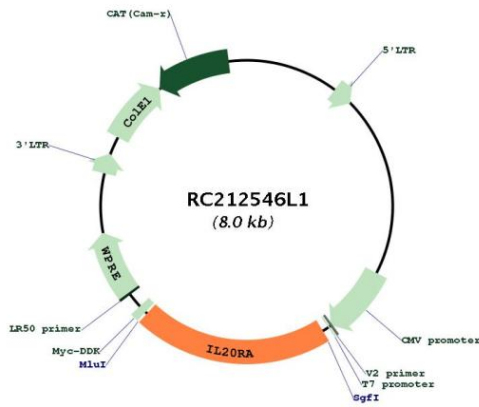
ACCN:	NM_014432
ORF Size:	1659 bp



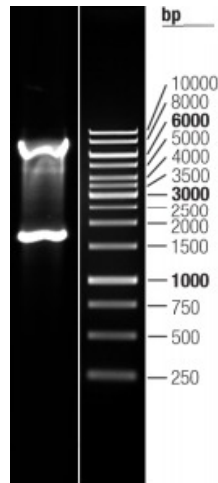
[View online >](#)

OTI Disclaimer:	The molecular sequence of this clone aligns with the gene accession number as a point of reference only. However, individual transcript sequences of the same gene can differ through naturally occurring variations (e.g. polymorphisms), each with its own valid existence. This clone is substantially in agreement with the reference, but a complete review of all prevailing variants is recommended prior to use. More info
OTI Annotation:	This clone was engineered to express the complete ORF with an expression tag. Expression varies depending on the nature of the gene.
Components:	The ORF clone is ion-exchange column purified and shipped in a 2D barcoded Matrix tube containing 10ug of transfection-ready, dried plasmid DNA (reconstitute with 100 ul of water).
Reconstitution Method:	<ol style="list-style-type: none">1. Centrifuge at 5,000xg for 5min.2. Carefully open the tube and add 100ul of sterile water to dissolve the DNA.3. Close the tube and incubate for 10 minutes at room temperature.4. Briefly vortex the tube and then do a quick spin (less than 5000xg) to concentrate the liquid at the bottom.5. Store the suspended plasmid at -20°C. The DNA is stable for at least one year from date of shipping when stored at -20°C.
Note:	Plasmids are not sterile. For experiments where strict sterility is required, filtration with 0.22um filter is required.
RefSeq:	NM_014432.2
RefSeq Size:	3701 bp
RefSeq ORF:	1662 bp
Locus ID:	53832
UniProt ID:	Q9UHF4
Cytogenetics:	6q23.3
Domains:	Tissue_fac
Protein Families:	Druggable Genome, Transmembrane
Protein Pathways:	Cytokine-cytokine receptor interaction, Jak-STAT signaling pathway
MW:	62.5 kDa
Gene Summary:	This gene encodes a member of the type II cytokine receptor family. The encoded protein is a subunit of the receptor for interleukin 20, a cytokine that may be involved in epidermal function. The interleukin 20 receptor is a heterodimeric complex consisting of the encoded protein and interleukin 20 receptor beta. This gene and interleukin 20 receptor beta are highly expressed in skin, and are upregulated in psoriasis. Alternative splicing results in multiple transcript variants. [provided by RefSeq, Jul 2013]

Product images:



Circular map for RC212546L1



Double digestion of RC212546L1 using SgfI-MluI