

Product datasheet for **RC212546**

IL20 Receptor alpha (IL20RA) (NM_014432) Human Tagged ORF Clone

Product data:

Product Type:	Expression Plasmids
Product Name:	IL20 Receptor alpha (IL20RA) (NM_014432) Human Tagged ORF Clone
Tag:	Myc-DDK
Symbol:	IL20 Receptor alpha
Synonyms:	CRF2-8; IL-20R-alpha; IL-20R1; IL-20RA
Mammalian Cell Selection:	Neomycin
Vector:	pCMV6-Entry (PS100001)
E. coli Selection:	Kanamycin (25 ug/mL)



[View online »](#)

ORF Nucleotide Sequence:

>RC212546 ORF sequence
 Red=Cloning site Blue=ORF Green=Tags(s)

TTTTGTAATACGACTCACTATAGGGCGGCCGGGAATTCGTCGACTGGATCCGGTACCGAGGAGATCTGCC
 GCC**CGCATCGCC**

ATGCGGGCTCCCGCCGCCCGCCCTGCGGCCGTGCCGTGCCCGCTGCTGCTGTTGCTCCTGGCGG
 CGCCTTGGGGACGGCAGTTCCTGTGTCTCTGGTGGTTTGCCTAAACCTGCAAACATCACTTCTTATC
 CATCAACATGAAGAATGTCTACAATGGACTCCACCAGAGGGTCTTCAAGGAGTTAAAGTACTTACACT
 GTGCAGTATTTTATATATGGGCAAAAAGAAATGGCTGAATAAATCAGAATGCAGAAATATCAATAGAACCT
 ACTGTGATCTTTCTGCTGAAACTTCTGACTACGAACACCAGTATTATGCCAAAGTTAAGGCCATTTGGGG
 AACAAAGTGTCCAAATGGGCTGAAAGTGGACGGTCTATCCTTTTTTAGAAACACAAATGGCCACCA
 GAGGTGGCACTGACTACAGATGAGAAGTCCATTTCTGTTGTCCTGACAGCTCCAGAGAAGTGAAGAGAA
 ATCCAGAAGACCTTCTGTTTCCATGCAACAAATATACTCCAATCTGAAGTATAACGTGTCTGTGTTGAA
 TACTAAATCAAACAGAAGTGGTCCCAGTGTGTGACCAACCACAGCTGGTGTCTACCTGGCTGGAGCCG
 AACACTCTTACTGCGTACACGTGGAGTCTTCTGCCAGGGCCCTCGCCGTGCTCAGCCTTCTGAGA
 AGCAGTGTGCCAGGACTTTGAAAGATCAATCATCAGAGTTCAAGGCTAAAATCATCTTCTGGTATGTTTT
 GCCCATATCTATTACCGTGTTCCTTTTTCTGTGATGGGCTATTCATCTACCGATATATCCACGTTGGC
 AAAGAGAAACACCCAGCAAAATTTGATTTGATTTATGAAATGAATTTGACAAAAGATTCTTTGTGCCTG
 CTGAAAAAATCGTGATTAACCTTATCACCTCAATATCTCGGATGATTCTAAAATTTCTCATCAGGATAT
 GAGTTTACTGGGAAAAGCAGTGATGTATCCAGCCTTAATGATCCTCAGCCAGCGGGAACCTGAGGCC
 CCTCAGGAGGAAGAGGAGGTGAAACATTTAGGGTATGCTTCGCATTTGATGGAATTTTTTGTGACTCTG
 AAGAAAAACACGGAAGGTACTTCTCTCACCCAGCAAGAGTCCCTCAGCAGAAACAATACCCCGGATAAAA
 AGTCATTGAATATGAATATGATGTCAGAACCACCTGACATTTGTGCGGGCCCTGAAGAGCAGGAGCTCAGT
 TTGAGGAGGAGGTGCCACACAAGGAACATTATTGGAGTGCAGGCAGCGTTGGCAGTCTTGGGCCCGC
 AAACGTTACAGTACTCATACCCCTCAGCTCCAAGACTTAGACCCCTGGCGCAGGAGCACACAGACTC
 GGAGGAGGGCCGGAGGAAGAGCCATCGACGACCTGGTGCAGTGGGATCCCAAACCTGGCAGGCTGTGT
 ATTCCTTCGCTGTCCAGCTTCCAGCAGGATTAGAGGGCTGCGAGCCTTCTGAGGGGATGGGCTCGGAG
 AGGAGGGTCTTCTATCTAGACTCTATGAGGAGCCGGCTCCAGACAGGCCACCAGGAGAAAATGAAACCTA
 TCTCATGAATTCATGGAGGAATGGGGTTATATGTGCAGATGAAAAAC

ACGCGTACGCGGCCGCTCGAGCAGAAACTCATCTCAGAAGAGGATCTGGCAGCAAATGATATCCTGGATT
 ACAAGGATGACGACGATAAGGTTTAA

Protein Sequence:

>RC212546 protein sequence
 Red=Cloning site Green=Tags(s)

MRAPGRPALRPLPLPPLLLLLL AWPWGRAVPCVSGGLPKPANITFLSINMKNVLQWTPPEGLQGVKVTYT
 VQYFIYGQKKWLNKSECRNINRTYCDLSAETSDEYHQYYAKVKAIWGTKCSKWAESGRFYPFLETQIGPP
 EVALTTDEKSISVVLTAPEKWKRPEDLPVSMQIYSNLKYNVSVLNTKSNRTWSQCVTNHTLVLTWLEP
 NTLVYCVHVESFVPGPPRAQPSEKQCARTLKDQSEFKAKIIFWYVLPISITVFLFSVMGYSIYRYIHVG
 KEKHPANLILYGNFDRFFVPAEKIVINFITLNISSDKISHQMSLLGKSSDVSSLNDPQPSGNLRP
 PQEEEEVKHLGYASHLMEIFCDSEENTEGTSLTQQESLSRTIPPDKTVIEYEDVRTTDICAGPEEQELS
 LQEEVSTQGTLLSQAALAVLGPQTLQYSYTPQLQDLPLAQEHTDSEEGPEEPEPSTLVDWDPQTGRLC
 IPSLSSFQDQDSEGCEPSEGDLGEEGLLSRLYEEPAPDRPPGENETYLMQFMEEWGLYVQMEN

TRTRPLEQKLISEEDLAANDILDYKDDDDKV

Chromatograms:

https://cdn.origene.com/chromatograms/mk6461_a08.zip

Restriction Sites:

Sgfl-Mlul

Cloning Scheme:


ACCN: NM_014432

ORF Size: 1659 bp

OTI Disclaimer: The molecular sequence of this clone aligns with the gene accession number as a point of reference only. However, individual transcript sequences of the same gene can differ through naturally occurring variations (e.g. polymorphisms), each with its own valid existence. This clone is substantially in agreement with the reference, but a complete review of all prevailing variants is recommended prior to use. [More info](#)

OTI Annotation: This clone was engineered to express the complete ORF with an expression tag. Expression varies depending on the nature of the gene.

Components: The ORF clone is ion-exchange column purified and shipped in a 2D barcoded Matrix tube containing 10ug of transfection-ready, dried plasmid DNA (reconstitute with 100 ul of water).

- Reconstitution Method:**
1. Centrifuge at 5,000xg for 5min.
 2. Carefully open the tube and add 100ul of sterile water to dissolve the DNA.
 3. Close the tube and incubate for 10 minutes at room temperature.
 4. Briefly vortex the tube and then do a quick spin (less than 5000xg) to concentrate the liquid at the bottom.
 5. Store the suspended plasmid at -20°C. The DNA is stable for at least one year from date of shipping when stored at -20°C.

Note: Plasmids are not sterile. For experiments where strict sterility is required, filtration with 0.22um filter is required.

RefSeq: [NM_014432.3](#)

RefSeq Size: 3701 bp

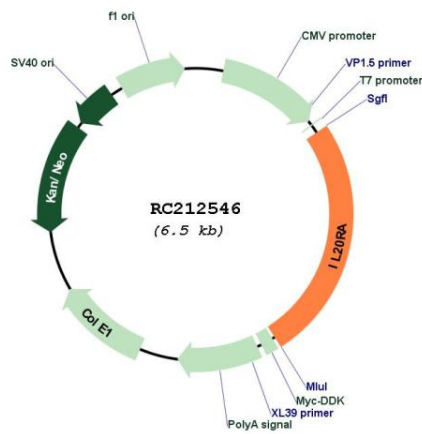
RefSeq ORF: 1662 bp

Locus ID: 53832

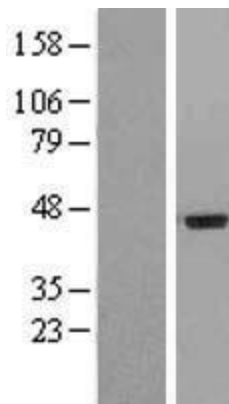
UniProt ID: [Q9UHF4](#)
Cytogenetics: 6q23.3
Domains: Tissue_fac
Protein Families: Druggable Genome, Transmembrane
Protein Pathways: Cytokine-cytokine receptor interaction, Jak-STAT signaling pathway
MW: 62.5 kDa

Gene Summary: This gene encodes a member of the type II cytokine receptor family. The encoded protein is a subunit of the receptor for interleukin 20, a cytokine that may be involved in epidermal function. The interleukin 20 receptor is a heterodimeric complex consisting of the encoded protein and interleukin 20 receptor beta. This gene and interleukin 20 receptor beta are highly expressed in skin, and are upregulated in psoriasis. Alternative splicing results in multiple transcript variants. [provided by RefSeq, Jul 2013]

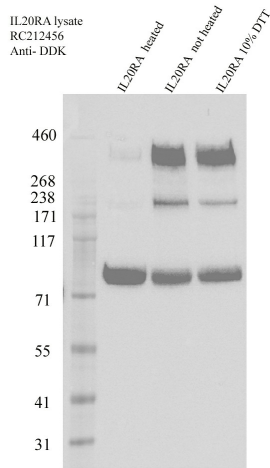
Product images:



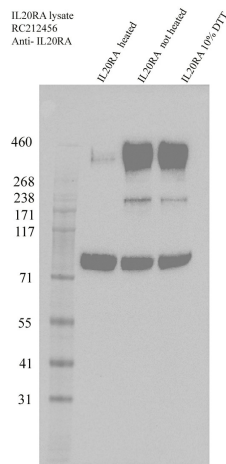
Circular map for RC212546



Western validation with an anti-DDK antibody * L: Control HEK293 lysate R: Over-expression lysate



HEK293T cells were transfected with pCMV6-ENTRY IL20RA ORF clone(Cat# RC212546) for 48 hrs and lysed. Equivalent amounts of cell lysates (Cat# [LY415281]) were prepared under different conditions and immunoblotted with anti-DDK antibody (Cat# [TA50011-100]).



HEK293T cells were transfected with pCMV6-ENTRY IL20RA ORF clone(Cat# RC212546) for 48 hrs and lysed. Equivalent amounts of cell lysates (Cat# [LY415281]) were prepared under different conditions and immunoblotted with anti-IL20RA antibody(Cat# [TA811623]).