

## Product datasheet for **RC212543**

### **RBM5 (NM\_005778) Human Tagged ORF Clone**

#### **Product data:**

Product Type:	Expression Plasmids
Product Name:	RBM5 (NM_005778) Human Tagged ORF Clone
Tag:	Myc-DDK
Symbol:	RBM5
Synonyms:	G15; H37; LUCA-15; LUCA15; RMB5
Mammalian Cell Selection:	Neomycin
Vector:	pCMV6-Entry (PS100001)
E. coli Selection:	Kanamycin (25 ug/mL)



[View online »](#)

**ORF Nucleotide Sequence:**

>RC212543 representing NM\_005778  
 Red=Cloning site Blue=ORF Green=Tags(s)

TTTTGTAATACGACTCACTATAGGGCGGCCGGAATTCGTGACTGGATCCGGTACCGAGGAGATCTGCC  
 GCC**CGGATCGCC**

ATGGGTT**CAGACAAA**AGAGT**GAGT**AGA**ACAGAG**CGT**AGT**GGA**AGAT**ACGGT**TCCAT**CAT**AGACAG**GGGAT**G**  
 ACCGT**GATGAG**CGT**GAAT**CCCGA**AGCAGG**CGGAGGGACT**CAGATT**ACAAA**AGATCT**AGT**GATGAT**CGGAG  
 GGGT**GATAGAT**AT**GATGACT**ACC**GAGACT**AT**GACAGT**CC**AGAGAG**AGCGT**GAAAGA**AGGA**ACAGT**GAC  
 CGAT**CCGAAG**ATGGT**TACCATT**CAGAT**GGT**GACTAT**GGT**GAG**CACGACT**AT**AGGCAT**GACAT**CAGT**GACG  
 AGAGGGAGAGCA**AGACCAT**AT**GCTGCG**CGCCT**TCCCAT**CACCAT**CACAGAG**CGGAT**ATTCG**GAGAA**T**  
 GATGGAGT**CCTTCGA**AGGCC**CTCAGCCT**GCGGAT**GTGAGGCT**GAT**GAAAGG**AAAA**CAGGT**GTA**AGCCGT**  
 GGTT**TCGCCTTC**GTGGAGT**TTT**AT**CACT**TGCA**AGATGCT**ACC**AGCTGGAT**GGA**AGCCAAT**CAGAAAA**AGT**  
 TGGT**GATTCA**AGGAA**AGCACATT**GCA**TGCATT**AT**AGCAAT**CCC**AGACCT**AAGT**TTGA**AGATT**GGCTTTG**  
 TAA**CAAGT**GCT**GCCTT**AACA**TTTCAGG**AAA**AGACT**AAA**TGCTTCC**GAT**GTGGAG**CAGACA**AGTTTGAC**  
 TCT**GAACAG**GAAGT**GCCTCCT**GGA**ACCACAG**AGT**CGGTT**CAGT**CTGTGGATT**ACT**ACTGTGAT**ACGAT**CA**  
 TT**CTTCG**GAACAT**AGCTCCG**CACACT**GTGGTGGATT**CCAT**CATGACAG**CACT**GTCTCCTT**ACGCGT**CCTT**  
 AGCT**GTCAATA**ACAT**CCGCCT**CATA**AAAAGACA**AA**CAGACCC**AGCAGAA**CAGAGGCTT**CGCATT**TTGT**GCAG  
 CT**GTCTCT**GCAT**GGATGCTT**CT**CAGCTGCTT**CAGAT**ATTACAGAGT**CT**CCATCCTCCTT**TGAAAA**TTG**  
 ATGGCA**AAACT**ATT**GGGGTTGATTT**TGCA**AAAAGT**GCCAGAAA**AGACTTGGT**CCT**CTCAGAT**GGTAA**CCG**  
 CGT**CAGCGCCTT**CT**GTAGCT**AGT**ACGGCT**AT**TGCTGCTGCT**CAGT**GGT**CAT**CCACCC**AGT**CTCAA**AGT  
 GGT**GAAGG**AGG**CAGTGT**GACT**ACAGTT**AT**CTGCA**ACC**AGTCAAGAT**GGCT**ATGCCAAT**AT**GTCT**CAGT  
 AT**TCACAG**GATTAT**CAGCAGT**TTTAT**CAACA**CA**AGCTGG**AGGAT**TGGAAT**CT**GATGCAT**CA**CTGCATC**  
 AGGCACAG**CAGT**GACC**ACCACCTCAG**CGGCT**GTAGTGTCC**AGAGT**CCTCAG**CTGTATA**ATCAA**ACCT**CC**  
 AAT**CCACCT**GGCT**CTCCGACT**GAGGA**AGCACAG**CCT**AGCACT**AGCACA**AGTACAC**AGGCC**CCAGCGCCTT**  
 CCC**CTACT**GGT**GTAGTTCCT**GGT**ACCAAAT**AT**GCA**GT**ACCTGAC**ACG**TCCACTT**ACC**AGTATGAT**GAAT**C**  
 TTCAGGAT**ATTACT**AT**GATCCG**ACA**ACAGGGCT**CT**ATTATG**ACCC**CAACTCG**CA**ATACTACT**ATA**ATTCC**  
 TTGACCC**AGCAGT**AC**CTTACT**GGGAT**GGGGAAA**AGAGAC**CTACGT**GCC**AGCTGC**AGAG**CTAGCT**CCC  
 ACC**AGCAGT**CGGG**CCTGCCTCCT**GCA**AAAGAGGGG**AAA**AGAGA**AGGAGAA**ACCAAG**AGCA**AAACAGC**  
 CC**AGCAGATT**GCCAA**AGACAT**GGA**ACGCTGGGCT**AAGAGT**TTGAATA**AGCAGAA**AGAAA**ACT**TTAAAAAT**  
 AG**CTTTCAGCCT**GT**CAATTCCTT**GAGGGAA**AGAAAGG**AGAGAA**TCTGCT**GCAG**CAGACGCTGGCTTTG**  
 CTCT**TTTGAGA**AGAA**GGGAGCCTTAGCT**GAA**AGGCAGCAGCTCAT**CCC**GAAAT**GGT**GCGAAAT**GGAGA  
 TGAGGAGAA**TCCCTCAA**AGGGG**TCTGGTTGCTGCTT**ACAGT**GGT**GACAGT**GACAAT**GAGGAGGAG**CTG**  
 GTGGAGAGACT**TGAGAGT**GAGGA**AGAGAAGCTAGCT**GACT**GGAAGA**AGAT**GGCCTGTCTGCT**CGCC**GGC**  
 GCCAGT**TTCCCGA**CAA**AGATGCCCT**AGT**CAGGCACC**AGCA**ACTCTCAGACCTT**CA**CAAGCA**AA**ACAT**GGA  
 CAT**CTACCG**ACGAT**CCAGGCT**GAGCG**AGCAGGAGCTGGA**AGC**CTTGGAGCTA**AGGGAGAGAGAT**GAAA**  
 TACCGAGAC**CGAGCTGC**AGAA**AGACGGG**AGA**AGTACGGCATT**CCAGAA**CTCCAGAG**CC**CAAGCG**CA**AGA**  
 AGCAGT**TTGATGCC**GGC**ACTGTGAATT**ACGAG**CAACCCAC**CAA**AGATGGCATT**GACCACAGT**AACATTGG**  
 CAACA**AGATGCTGC**AGGCCAT**GGGCTGGCGG**AA**GGCTCTGGCTTGGGAC**GAA**AGTGTCA**AGGC**ATTACG**  
 GCTCC**ATTGAGGCT**CAAGT**TCGCTAA**AGGGAG**CTGGCCTAGGAG**CCAA**AGGCAGCGCAT**AT**GGTTTGT**  
 CGGGCGCCG**ATTCT**ACA**AGATGCTGTCCG**AA**AGCCATGTTT**GCCCG**TTC**ACT**GAGATGGAG**

AG**CGGACCG**ACGCGT**ACGCGGCCGCTCGAGCAG**AA**ACTCATCTCAG**AAGAGGAT**CTGGCAGCAAATGATATCC**  
 TGGATTACA**AGGATGACGACGATAAGGTTTAA**

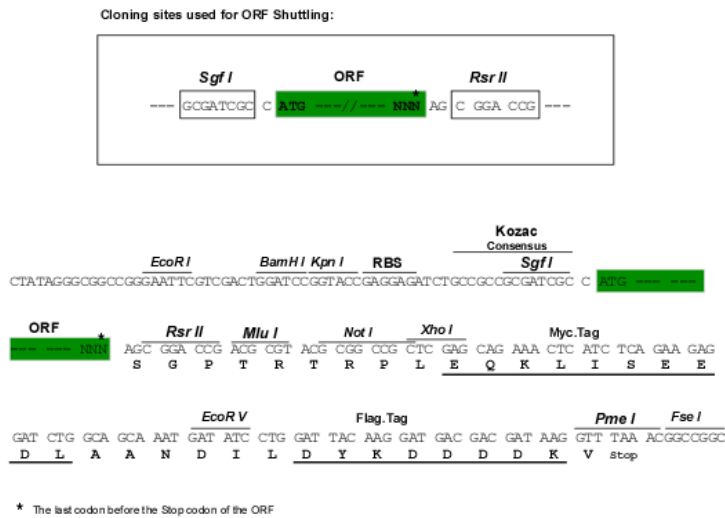
Protein Sequence: >RC212543 representing NM\_005778  
Red=Cloning site Green=Tags(s)

MGSDKRVSRTERSGRYGSIIIDRDDRDERESRSRRRSDSYKRSSDDRRGDRYDDYRDYDSPERERERRNSD  
RSEGDYHSDGDYGEHDYRHDISDERESKTI MLRGLPITITTESDIEMMESFEGPQPADVRLMKRKTGVSR  
GFAFVEFYHLQDATSWMEANQKKLVIQGHIAHYSNRPKPFEDWLCNKCLNNFRKRLKCFRCGADKFD  
SEQEVPPGTTESVQSVDYYCDTIILRNIAPHTVVDSIMTALSPYASLAVNNIRLIKDKQTQQNRGFAFVQ  
LSSAMDASQLLQILQSLHPLKIDGKTIGVDFAKSARKDLVLSGDNRVSAFVASTAIAAAQWSSTQSQS  
GEGGSVDYSYLQPGDGYAQAQYSQDYQQFYQQAGGLESDASSASGTAVTTTSAAVVSQSPQLYNQTS  
NPPGSPTEEAQPSTSTSTQAPAASTGVVPGTKYAVPDTSTYQYDESSGYYDPTTGLYYDPNSQYYYNS  
LTQQYLYWDGEKETYPAAESSHQSGLPPAKEGKEKKEKPKSKTAQQIAKDMERWAKSLNKQKENFKN  
SFQPVNSLREEERREAAAADAGFALFEKKGALAERQQLIPELVRNGDEENPLKRGLVAAYSQSDNEEEL  
VERLESEEEKLADWKKMACLLCRRQFPNKDALVRHQQLSDLHKQNMDIYRRSRLSEQELEALELREREMK  
YRDRAAERREKYIPEPPEPKRKKQFDAGTVNYEQPTKDGIDHSNIGNKMLQAMGWREGSGLGRKCQGIT  
APIEAQVRLKGAGLGAKGSAYGLSGADSYKDAVRKAMFARFTEME

SGPTRRRLLEQKLISEEDLAANDILDYKDDDDKV

Chromatograms: [https://cdn.origene.com/chromatograms/mk6184\\_h05.zip](https://cdn.origene.com/chromatograms/mk6184_h05.zip)

Restriction Sites: Sgfl-RsrII

**Cloning Scheme:**


**ACCN:** NM\_005778

**ORF Size:** 2445 bp

**OTI Disclaimer:** The molecular sequence of this clone aligns with the gene accession number as a point of reference only. However, individual transcript sequences of the same gene can differ through naturally occurring variations (e.g. polymorphisms), each with its own valid existence. This clone is substantially in agreement with the reference, but a complete review of all prevailing variants is recommended prior to use. [More info](#)

**OTI Annotation:** This clone was engineered to express the complete ORF with an expression tag. Expression varies depending on the nature of the gene.

**Components:** The ORF clone is ion-exchange column purified and shipped in a 2D barcoded Matrix tube containing 10ug of transfection-ready, dried plasmid DNA (reconstitute with 100 ul of water).

**Reconstitution Method:**

1. Centrifuge at 5,000xg for 5min.
2. Carefully open the tube and add 100ul of sterile water to dissolve the DNA.
3. Close the tube and incubate for 10 minutes at room temperature.
4. Briefly vortex the tube and then do a quick spin (less than 5000xg) to concentrate the liquid at the bottom.
5. Store the suspended plasmid at -20°C. The DNA is stable for at least one year from date of shipping when stored at -20°C.

**RefSeq:** [NM\\_005778.1](#), [NP\\_005769.1](#)

**RefSeq Size:** 3135 bp

**RefSeq ORF:** 2448 bp

**Locus ID:** 10181

**UniProt ID:** [P52756](#)

**Cytogenetics:** 3p21.31

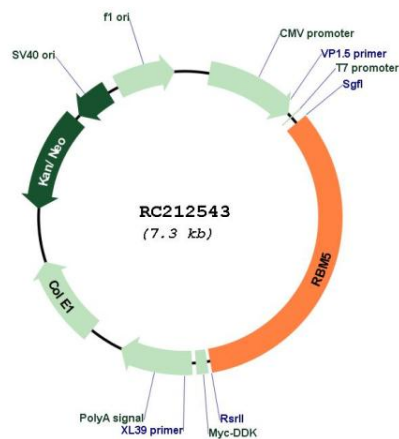
**Domains:** G-patch, RRM, zf-RanBP, zf-C2H2

**Protein Families:** Druggable Genome

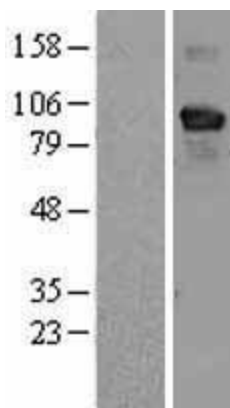
**MW:** 92 kDa

**Gene Summary:** This gene is a candidate tumor suppressor gene which encodes a nuclear RNA binding protein that is a component of the spliceosome A complex. The encoded protein plays a role in the induction of cell cycle arrest and apoptosis through pre-mRNA splicing of multiple target genes including the tumor suppressor protein p53. This gene is located within the tumor suppressor region 3p21.3, and may play a role in the inhibition of tumor transformation and progression of several malignancies including lung cancer. [provided by RefSeq, Oct 2011]

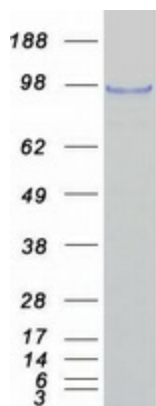
### Product images:



Circular map for RC212543



Western blot validation of overexpression lysate (Cat# [LY401757]) using anti-DDK antibody (Cat# [TA50011-100]). Left: Cell lysates from untransfected HEK293T cells; Right: Cell lysates from HEK293T cells transfected with RC212543 using transfection reagent MegaTran 2.0 (Cat# [TT210002]).



Coomassie blue staining of purified RBM5 protein (Cat# [TP312543]). The protein was produced from HEK293T cells transfected with RBM5 cDNA clone (Cat# RC212543) using MegaTran 2.0 (Cat# [TT210002]).