

## Product datasheet for **RC212535**

### Zfp219 (ZNF219) (NM\_001102454) Human Tagged ORF Clone

#### Product data:

Product Type:	Expression Plasmids
Product Name:	Zfp219 (ZNF219) (NM_001102454) Human Tagged ORF Clone
Tag:	Myc-DDK
Symbol:	Zfp219
Synonyms:	ZFP219
Mammalian Cell Selection:	Neomycin
Vector:	pCMV6-Entry (PS100001)
E. coli Selection:	Kanamycin (25 ug/mL)



[View online »](#)

ORF Nucleotide  
Sequence:

>RC212535 ORF sequence  
Red=Cloning site Blue=ORF Green=Tags(s)

TTTTGTAATACGACTCACTATAGGGCGGCCGGGAATTCGTCGACTGGATCCGGTACCGAGGAGATCTGCC  
GCC**CGGATCGCC**

ATGGAGGGCTCAGTCCCGCGCCCGAGCGGCCACTTAGCGCCGTCGCCCGGCTTTCGACGGCGAGC  
TGGATCTGCAGCGATACTCCAACGGGCCAGCCGTGAGCGCAGGGTCGCTCGGGATGGGAGCGGTGAGCTG  
GTCTGAGAGTCGTGCAGGCGAACGGCGCTTCCCCTGCCCTGTATGCGGGAAGCGCTTCCGCTTCAACTCT  
ATCCTTGTCTTGCACCTGCGGGCGCACCCAGGAGCCAGGCCCTCCAGTGCCCTCACTGCGGCCACCGCG  
CGGCGCAGCGGGCTCTGCTGCGCTCGCACCTGCGCACACACCAGCCCAGCGCCACGTAGTCTCTGCTGC  
ACGCTGTTGCTGGAGTTGGAAGAGCGCGCTACTACGCGAGGCCCGACTGGGGAGAGCCCGAAGCTCA  
GGGGGCATGCAGGCCACCCCTGCCACTGAGGGTCTGGCGCGGCCCCAGGCTCCTTCATCGTCCGCCCTCC  
GTTGCCCTACTGCAAAGCAAGTTTCGCACCTCGGCGGAGCGCGAACGCCACCTGCACATCCTGCATAG  
GCCCTGGAAGTGGGCCCTGTGCAGTTTCGGCTCCAGCCAGGAGGAGGAGCTGCTGCACCACGCCTGACG  
GCCACAGGGGCTCCCGAGCGTCCCTGGCGGCCACCTCCGCTGCGCTCCGCCTCAGCCTCAGCCTCCAC  
CCCAGCCCGAACCCAGATCAGTTCCCAGCCGGAGCCGGAGCCGGAGCCCGAACCTGAGGCAACCCCGAC  
CCCAGCTCCTGCGCTCCCGAGGAGCCCCAGCGCCTCCGGAGTTCGGTGCAGTGTGCGGCCAGAGC  
TTTACACAGTCTTGGTTTCTCAAGGGCCACATGCGTAAGCACAAGGCCTCCTTCGATCATGCGTGTCCGG  
TGTGCGGCCGCTGCTTCAAGGAGCCCTGGTTCCCTAAGAACCACATGAAGGTGCACGCCAGCAAGCTGGG  
CCCCTGCGTGCAGCGGGGCTGCTCCGGGCTGCCCGCGCCCCAGCCTCCTGACCTCGGCCTGCTG  
GCCTATGAGCCGTTGGGCCACGCTCCTTGGCCCCGGCTCCACCCCGCCGAGCGCGGTGAGCCCCG  
CGAGCCTTGGGCTACCTGAGCCTGCGAGCTGGCGAGGGCCGGCCCAACGGCGAGGGTGTGAGCCCCG  
TCCCGGCCGAGCTTCGGAGGCTTCGCGCCGCTGTCTCTGCTCTCCCGGCCGGGCTCGCCGGCACCGT  
GCGGAGGAGCCTGAGGAAGAAGAGGAGGTGGTGGAGGCCGAGGAGGAAACCTGGGCCCGGGCAGGTGCG  
TGGGCTCTCTGGCTTCCCTGCACCCGCGCCGGGTGAGGGACCGGGCACTCTGCCTCTGCTGCTGGGGC  
CCAGGCAAGATCGACCGCACGAGGAAGAGAATGGGCTGTTGGTTGGAGGGACCCGGCCTGAAGGGGGC  
CGGGGCGCACCGCAAGGATTGCTTTCTGCGGAAAATCTTCCGCTCAGCACATCACCTCAAAGTGC  
ATCTGCGAGTGCACACAGGCGAGCGGCCCTACAAGTGTCCGCACTGCGACTACGCGGGCACCCAGTCCGG  
CTCGCTCAAGTATCACCTACAGCGCCACCACCGGAGCAGAGGAGCGGGCCGGCCCCGGGCCACCCCG  
GAGCCACCGCCTCCTTCCAGCGGGTTCGGCCCCGCAATCTGGAGCCAAGCCGCTCCTCCGAGCCTGCGA  
CCTGGGTGGAGGGCGCCTCAAGTCCCGCCTCCTTCTAGCGGTGCTGGGCCGGGTCCCGTCCGGAAGCC  
CGCCAGCCCTGGGAGGACCTGCGCAACGGGCGAGGCGGTGAGGCCGAACCCCTGGACCTGTCTTTCGG  
GCAGGGCCGGGAGGCGAGGCCGGGCTGGGGTGCCTCCACCGTGCCTTCTGCCCCGTTCCGCACTG  
GAGCCCCAGAGCTCATGGCCTTGACCTTCAAAGTGCACACAGCCGCGGGCTAGGGGCCCGGCCACC  
CCAGGCTGACGCGTCCCGCCCTATGCCGAGTACCATCAGGAGAGACCCTCCAGTCTTTCGAGGAA  
GGGGAGGAGGGCTCCGGGCTGTCCAGACCCGAGAGGCAGGGCTGGGGGGCAAGAACGG

AG**CGGACCG**ACGCGTACGCGGCCGCTCGAGCAGAAACTCATCTCAGAAGAGGATCTGGCAGCAAATGATATCC  
TGGATTACAAGGATGACGACGATAAGGTTTAA

**Protein Sequence:** >RC212535 protein sequence  
Red=Cloning site Green=Tags(s)

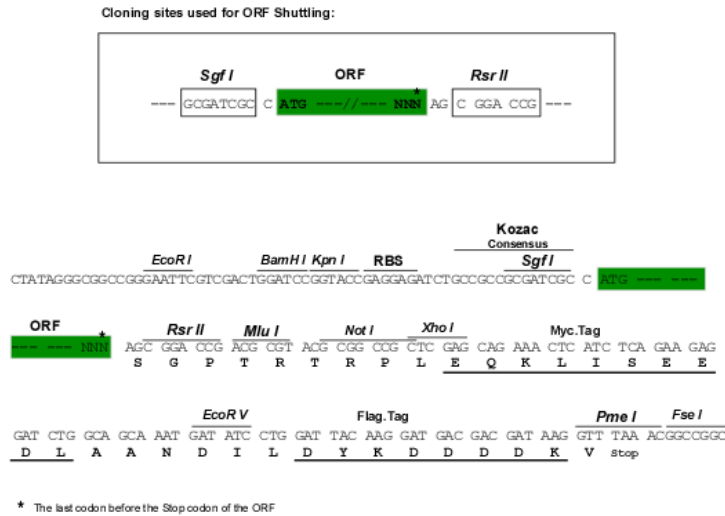
```
MEGSRPRAPSGHLAPSPPAFDGELDLQRYSNPVAVSAGSLGMGAVSWSES RAGERRFPCVCGKRFRFNS
ILALHLRAHPGAQAFQCPHCGRHAAQRALLRSHLRTHQPERPRSPAARLLLEERALLREARLGRARSS
GGMQATPATEGLARPQAPSSSAFRCPYCKGKFRTSAERERHLHILHRPWKCGLCSFGSSQEEELLHHSLT
AHGAPERPLAATSAAPPPQPQPPQPEPRSVQPPEPEPEPEREATPTPAPAAPEEPPAPPEFRCQVCGQS
FTQSWFLKGHMRKHKASFDHACPVCGRCFKPEWFLKNHMKVHASKLGPLRAPGPASGPAPARAPQPPDLGLL
AYEPLGPALLLAPAPTPAERREPPSLLGYLSLRAGEGRPNGEAEPGPGRSFGGFRPLSSALPARARRHR
AEEPEEEEEVVEAEEETWARGRSLGSLASLHPRPGE GPGHSASAAGA QARSTATQEENGLLVGGTRPEGG
RGATGKDCPCGKSFSAHHLKVHLRVHTGERPYKCPHCDYAGTQSGSLKYHLQRHREQRSGAGP GPPP
EPPPPSQRSAPQSGAKPSPQATWVEGASSPRPPSSGAGPGRKPPASPGRTLNRNGGGEAEPLDSLRLR
AGPGGEAGPGGALHRCLFCPFATGAPELMALHLQVHHSRRARGRRPPQADASPPYARVPSGETPPSPSQE
GEEGSLSRPGEAGLGGQER
```

SGPTRTRPLEQKLISEEDLAANDILDYKDDDDKV

**Chromatograms:** [https://cdn.origene.com/chromatograms/mk6794\\_e10.zip](https://cdn.origene.com/chromatograms/mk6794_e10.zip)

**Restriction Sites:** SgfI-RsrII

**Cloning Scheme:**



**ACCN:** NM\_001102454

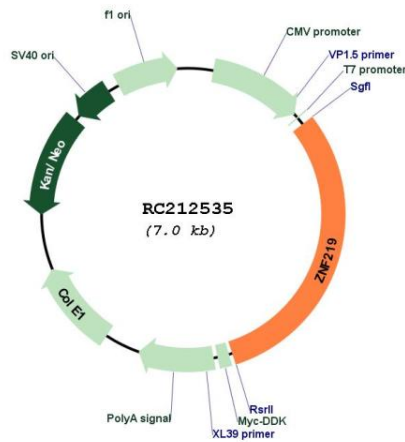
**ORF Size:** 1389 bp

**OTI Disclaimer:** The molecular sequence of this clone aligns with the gene accession number as a point of reference only. However, individual transcript sequences of the same gene can differ through naturally occurring variations (e.g. polymorphisms), each with its own valid existence. This clone is substantially in agreement with the reference, but a complete review of all prevailing variants is recommended prior to use. [More info](#)

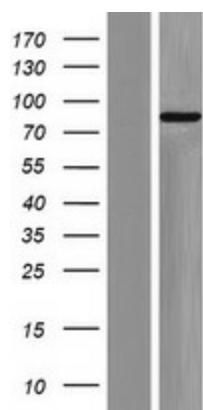
**OTI Annotation:** This clone was engineered to express the complete ORF with an expression tag. Expression varies depending on the nature of the gene.

<b>Components:</b>	The ORF clone is ion-exchange column purified and shipped in a 2D barcoded Matrix tube containing 10ug of transfection-ready, dried plasmid DNA (reconstitute with 100 ul of water).
<b>Reconstitution Method:</b>	<ol style="list-style-type: none"> <li>1. Centrifuge at 5,000xg for 5min.</li> <li>2. Carefully open the tube and add 100ul of sterile water to dissolve the DNA.</li> <li>3. Close the tube and incubate for 10 minutes at room temperature.</li> <li>4. Briefly vortex the tube and then do a quick spin (less than 5000xg) to concentrate the liquid at the bottom.</li> <li>5. Store the suspended plasmid at -20°C. The DNA is stable for at least one year from date of shipping when stored at -20°C.</li> </ol>
<b>RefSeq:</b>	<u>NM_001102454.1</u> , <u>NP_001095924.1</u>
<b>RefSeq Size:</b>	2954 bp
<b>RefSeq ORF:</b>	2169 bp
<b>Locus ID:</b>	51222
<b>UniProt ID:</b>	<u>Q9P2Y4</u>
<b>Cytogenetics:</b>	14q11.2
<b>Protein Families:</b>	Transcription Factors
<b>MW:</b>	76.7 kDa
<b>Gene Summary:</b>	This gene is a member of the Kruppel-like zinc finger gene family. The encoded protein functions as a transcriptional repressor of the high mobility group nucleosome binding domain 1 protein, which is associated with transcriptionally active chromatin. [provided by RefSeq, Apr 2017]

**Product images:**



Circular map for RC212535



Western blot validation of overexpression lysate (Cat# [LY420325]) using anti-DDK antibody (Cat# [TA50011-100]). Left: Cell lysates from untransfected HEK293T cells; Right: Cell lysates from HEK293T cells transfected with [RC223274] using transfection reagent MegaTran 2.0 (Cat# [TT210002]).