

## Product datasheet for **RC212534**

### **BTNL8 (NM\_024850) Human Tagged ORF Clone**

#### Product data:

**Product Type:** Expression Plasmids  
**Product Name:** BTNL8 (NM\_024850) Human Tagged ORF Clone  
**Tag:** Myc-DDK  
**Symbol:** BTNL8  
**Synonyms:** BTN9.2  
**Mammalian Cell Selection:** Neomycin  
**Vector:** pCMV6-Entry (PS100001)  
**E. coli Selection:** Kanamycin (25 ug/mL)  
**ORF Nucleotide Sequence:** >RC212534 representing NM\_024850  
**Red=Cloning site Blue=ORF Green=Tags(s)**

TTTTGTAATACGACTCACTATAGGGCGGCCGGAATTCGTCGACTGGATCCGGTACCGAGGAGATCTGCC  
GCC**CGATCGCC**

ATGGCTCATGCTCAGTTTGGTTCTGAGTCTCCTCAAGCTGGGATCAGGGCAGTGGCAGGTGTTGGGC  
CAGACAAGCCTGTCCAGGCCTTGGTGGGGAGGACGCAGCATTCTCTGTTTCTGTCTCCTAAGACCAA  
TGCAGAGGCCATGGAAGTGGTCTTTCAGGGCCAGTCTCTAGCGTGGTCCACCTCTACAGGGACGGG  
AAGGACCAGCCATTTATGCAGATGCCACAGTATCAAGGCAGGACAAAACGGTGAAGGATTCTATTGCGG  
AGGGGCGCATCTCTGAGGCTGGAACACTGTGTTGGATGCTGGCCTCTATGGGTGCAGGATTAG  
TTCCCAGTCTTACTACCAGAAGGCCATCTGGGAGCTACAGGTGTCAGCACTGGGCTCAGTTCCTCTCATT  
TCCATCACGGGATATGTTGATAGAGACATCCAGCTACTCTGTCTCAGTCTCGGGCTGGTCCCCCGGCCCA  
CAGCGAAGTGGAAAGGTCCACAAGGACAGGATTTGTCCACAGACTCCAGGACAAACAGAGACATGCATGG  
CCTGTTTGTGAGGATCTCTCTGACCGTCCAAGAGAACGCCGGGAGCATATCCTGTTCCATGCGGCAT  
GCTCATCTGAGCCGAGAGGTGGAATCCAGGTACAGATAGGAGATACCTTTTTCGAGCCTATATCGTGGC  
ACCTGGTACCAAAGTACTGGGAATACTCTGCTGTGGCCTATTTTTGGCATTGTTGGACTGAAGATTTT  
CTTCTCCAAATCCAGTGAAGCGAGAGAGAGAAGCATGGGCCGTGCCTTATTCATGGTCCAGCAGGG  
ACAGGATCAGAGATGCTCCACATCCAGCTGCTTCTTCTTAGTCCTAGCCTCCAGGGGCCAGGCC  
CAAAAAGGAAAATCCAGCGGAACTGGACTGGAGAAGAAAGCACGGACAGGCAGAATTGAGAGACGCC  
GGAAACACGCAGTGGAGGTGACTCTGGATCCAGAGACGGCTCACCCGAAGCTCTGCGTTTC

**ACGCGT**ACGCGGCCGCTCGAGCAGAACTCATCTCAGAAGAGGATCTGGCAGCAATGATATCCTGGATT  
ACAAGGATGACGACGATAAGGTTTAA



[View online »](#)

**Protein Sequence:** >RC212534 representing NM\_024850  
Red=Cloning site Green=Tags(s)

MALMLSLVLSLLKLGSGQWVFGPDKPVQALVGEDAAFSCFLSPKTNAEAMEVRFRRGQFSSVVHLYRDG  
 KDQPFMQMPQYQGRKLVKDSIAEGRISLRLENITVLDAGLYGCRISQSYQKAIWELQVSALGSVPLI  
 SITGYVDRDIQLLCQSSGWFPRTAKWKGPQGDLSTDSRTNRDMHGLFDVEISLTVQENAGSISCSMRH  
 AHL SREVESRVQIGDTFFEPISWHLATKVLGILCCGLFFGIVGLKIFFSKFQCKREREAWAGALFMVPAG  
 TGSEMLPHPAASLLLVLASRGP GPKKENPGGTGLEKKARTGRIERRPETRSGGDSGRDGSPEALRF

TRTRPLEQKLISEEDLAANDILDYKDDDDKV

**Chromatograms:** [https://cdn.origene.com/chromatograms/mk8053\\_g03.zip](https://cdn.origene.com/chromatograms/mk8053_g03.zip)

**Restriction Sites:** SgfI-MluI

**Cloning Scheme:**



**ACCN:** NM\_024850

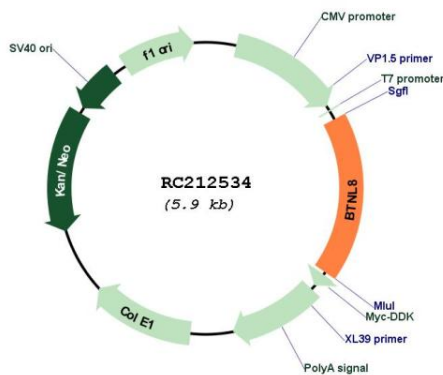
**ORF Size:** 1041 bp

**OTI Disclaimer:** Due to the inherent nature of this plasmid, standard methods to replicate additional amounts of DNA in E. coli are highly likely to result in mutations and/or rearrangements. Therefore, OriGene does not guarantee the capability to replicate this plasmid DNA. Additional amounts of DNA can be purchased from OriGene with batch-specific, full-sequence verification at a reduced cost. Please contact our customer care team at [custsupport@origene.com](mailto:custsupport@origene.com) or by calling 301.340.3188 option 3 for pricing and delivery.

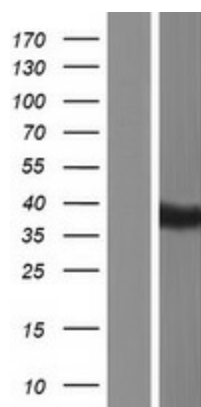
The molecular sequence of this clone aligns with the gene accession number as a point of reference only. However, individual transcript sequences of the same gene can differ through naturally occurring variations (e.g. polymorphisms), each with its own valid existence. This clone is substantially in agreement with the reference, but a complete review of all prevailing variants is recommended prior to use. [More info](#)

<b>OTI Annotation:</b>	This clone was engineered to express the complete ORF with an expression tag. Expression varies depending on the nature of the gene.
<b>Components:</b>	The ORF clone is ion-exchange column purified and shipped in a 2D barcoded Matrix tube containing 10ug of transfection-ready, dried plasmid DNA (reconstitute with 100 ul of water).
<b>Reconstitution Method:</b>	<ol style="list-style-type: none"> <li>1. Centrifuge at 5,000xg for 5min.</li> <li>2. Carefully open the tube and add 100ul of sterile water to dissolve the DNA.</li> <li>3. Close the tube and incubate for 10 minutes at room temperature.</li> <li>4. Briefly vortex the tube and then do a quick spin (less than 5000xg) to concentrate the liquid at the bottom.</li> <li>5. Store the suspended plasmid at -20°C. The DNA is stable for at least one year from date of shipping when stored at -20°C.</li> </ol>
<b>RefSeq:</b>	<a href="#">NM_024850.2</a> , <a href="#">NP_079126.1</a>
<b>RefSeq Size:</b>	2165 bp
<b>RefSeq ORF:</b>	1044 bp
<b>Locus ID:</b>	79908
<b>UniProt ID:</b>	<a href="#">Q6UX41</a>
<b>Cytogenetics:</b>	5q35.3
<b>Protein Families:</b>	Druggable Genome, Transmembrane
<b>MW:</b>	38 kDa
<b>Gene Summary:</b>	May stimulate primary immune response. Acts on T-cell stimulated sub-optimally through the TCR/CD3 complex stimulating their proliferation and cytokine production.[UniProtKB/Swiss-Prot Function]

**Product images:**



Circular map for RC212534



Western blot validation of overexpression lysate (Cat# [LY411020]) using anti-DDK antibody (Cat# [TA50011-100]). Left: Cell lysates from untransfected HEK293T cells; Right: Cell lysates from HEK293T cells transfected with RC212534 using transfection reagent MegaTran 2.0 (Cat# [TT210002]).