

Product datasheet for RC212532

FBXO44 (NM_001014765) Human Tagged ORF Clone

Product data:

Product Type: Expression Plasmids
Product Name: FBXO44 (NM_001014765) Human Tagged ORF Clone
Tag: Myc-DDK
Symbol: FBXO44
Synonyms: FBG3; FBX6A; FBX30; Fbx44; Fbxo6a
Mammalian Cell Selection: Neomycin
Vector: pCMV6-Entry (PS100001)
E. coli Selection: Kanamycin (25 ug/mL)
ORF Nucleotide Sequence: >RC212532 representing NM_001014765
 Red=Cloning site Blue=ORF Green=Tags(s)

TTTTGTAATACGACTCACTATAGGGCGCCGGGAATTCGTCGACTGGATCCGGTACCGAGGAGATCTGCC
 GCCCGATCGCC

ATGGCTGTGGGAACATCAACGAGCTGCCGAGAACATCCTGCTGGAGCTGTTACGCACGTGCCGCC
 GCCAGCTGCTGCTGAAGTCCGCTGGTCTGCAGCCTCTGGCGGACCTCATCGACCTCGTGACCCTCTG
 GAAACGCAAGTGCCTGCGAGAGGGCTTCATCACTGAGGACTGGGACCAGCCCGTGGCCGACTGGAAGATC
 TTCTACTTCTTACGGAGCCTGCACGGAACCTCCTGCACAACCCGTGCGCTGAAGAGGGTTTCGAGTTCT
 GGAGCCTGGATGTGAATGGAGGCGATGAGTGGAAGGTGGAGGATCTCTCTCGAGACCAGAGGAAGGAATT
 CCCCAATGACCAGGTCAAGAAATACTTCGTTACTTCATATTACACCTGCCTCAAGTCCCAGTGGTGGAC
 CTC AAGGCCGAAGGGTATTGGGAGGAGCTGATGGATACCACACGGCCGGACATCGAGGTCAAGGACTGGT
 TCGCAGCCAGGCCAGATTGCGGGTCCAAGTACCAGCTGTGCGTTCAGCTCCTGTGCTCCGCGCACGCGCC
 TCTGGGGACCTTCCAGCCAGACCCGGCGACCATCCAGCAGAAGAGCGATGCCAAGTGGAGGGAGGTCTCC
 CACACATTCTCCAATACCCGCCGCGCTCCGCTACATCTGGTTTCAGCACGGCGCGTGGACACTCATT
 ACTGGGCCGGCTGGTACGGCCGAGGGTCACCAACAGCAGCATCACCATCGGGCCCCCGTGGCC

ACGCGTACGCGGCCGCTCGAGCAGAACTCATCTCAGAAGAGGATCTGGCAGCAAATGATATCCTGGATT
 ACAAGGATGACGACGATAAGGTTTAA



[View online »](#)

Protein Sequence: >RC212532 representing NM_001014765
Red=Cloning site Green=Tags(s)

MAVGNINELPENILLELFTHVPARQLLLNCRLVCSLWRDLIDLVTLWKRKCLREGFITEDWDQPVADWKI
 FYFLRSLHRNLLHNPCAEEGFVWVSLDVNGDEWKVEDLSRDQRKEFPNDQVKYFVTSYYTCLKSQVVD
 LKAEGYWEELMDTTRPDIEVKDWF AARPDCGSKYQLCVQLLSSAHAPLGTQDPATIQQKSDAKWREVS
 HTFSNYPPGVRYIWFQHGVDTHYWAGWYGRVNTSSITIGPPLP

TRTRPLEQKLISEEDLAANDILDYKDDDDKV

Chromatograms: https://cdn.origene.com/chromatograms/mk6116_b07.zip

Restriction Sites: SgfI-MluI

Cloning Scheme:



ACCN: NM_001014765

ORF Size: 765 bp

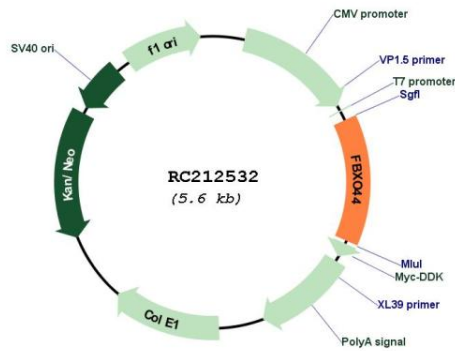
OTI Disclaimer: The molecular sequence of this clone aligns with the gene accession number as a point of reference only. However, individual transcript sequences of the same gene can differ through naturally occurring variations (e.g. polymorphisms), each with its own valid existence. This clone is substantially in agreement with the reference, but a complete review of all prevailing variants is recommended prior to use. [More info](#)

OTI Annotation: This clone was engineered to express the complete ORF with an expression tag. Expression varies depending on the nature of the gene.

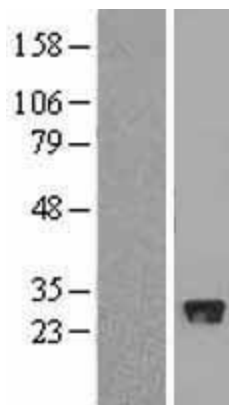
Components: The ORF clone is ion-exchange column purified and shipped in a 2D barcoded Matrix tube containing 10ug of transfection-ready, dried plasmid DNA (reconstitute with 100 ul of water).

Reconstitution Method:	<ol style="list-style-type: none">1. Centrifuge at 5,000xg for 5min.2. Carefully open the tube and add 100ul of sterile water to dissolve the DNA.3. Close the tube and incubate for 10 minutes at room temperature.4. Briefly vortex the tube and then do a quick spin (less than 5000xg) to concentrate the liquid at the bottom.5. Store the suspended plasmid at -20°C. The DNA is stable for at least one year from date of shipping when stored at -20°C.
RefSeq:	<u>NM_001014765.1</u> , <u>NP_001014765.1</u>
RefSeq Size:	3320 bp
RefSeq ORF:	768 bp
Locus ID:	93611
UniProt ID:	<u>Q9H4M3</u>
Cytogenetics:	1p36.22
Protein Families:	Druggable Genome
MW:	29.6 kDa
Gene Summary:	<p>This gene encodes a member of the F-box protein family which is characterized by an approximately 40 amino acid motif, the F-box. The F-box proteins constitute one of the four subunits of the ubiquitin protein ligase complex called SCFs (SKP1-cullin-F-box), which function in phosphorylation-dependent ubiquitination. The F-box proteins are divided into 3 classes: Fbws containing WD-40 domains, Fbls containing leucine-rich repeats, and Fbxs containing either different protein-protein interaction modules or no recognizable motifs. The protein encoded by this gene belongs to the Fbxs class. It is also a member of the NFB42 (neural F Box 42 kDa) family, similar to F-box only protein 2 and F-box only protein 6. Several alternatively spliced transcript variants encoding two distinct isoforms have been found for this gene. [provided by RefSeq, Feb 2015]</p>

Product images:



Circular map for RC212532



Western blot validation of overexpression lysate (Cat# [LY403232]) using anti-DDK antibody (Cat# [TA50011-100]). Left: Cell lysates from untransfected HEK293T cells; Right: Cell lysates from HEK293T cells transfected with [RC212532] using transfection reagent MegaTran 2.0 (Cat# [TT210002]).