

## Product datasheet for RC212521

### C6orf151 (SNRNP48) (NM\_152551) Human Tagged ORF Clone

#### Product data:

Product Type:	Expression Plasmids
Product Name:	C6orf151 (SNRNP48) (NM_152551) Human Tagged ORF Clone
Tag:	Myc-DDK
Symbol:	C6orf151
Synonyms:	C6orf151; dj336K20B.1; dj512B11.2
Mammalian Cell Selection:	Neomycin
Vector:	pCMV6-Entry (PS100001)
E. coli Selection:	Kanamycin (25 ug/mL)
ORF Nucleotide Sequence:	>RC212521 ORF sequence Red=Cloning site Blue=ORF Green=Tags(s)

TTTTGTAATACGACTCACTATAGGGCGGCCGGAATTCGTCGACTGGATCCGGTACCGAGGAGATCTGCC  
GCC**CGATCGCC**

ATGGAGGGCGAGCCTCCACCTGTGGAGGAGCGGCGGGCTGCAGGAGGAGCTGAACGAGTTCGTGGAGA  
GCGGCTGCCGGACGTTGGAGGAGGTGACCGCGTCCCTGGGCTGGGACCTAGATAGTCTGGATCTCGGGGA  
AGAGGAGCGCGGAGGATGAAGTTGTGATATGCCATACGATTCCAATCATCACATGCCTAAATCATCT  
TTGGCAAAGCACATGGCATCTTGTAGATTGAGGAAAATGGGCTATACCAAAGAAGAAGAGGATGAAATGT  
ATAATCCTGAGTTTTTCTATGAAAATGTGAAGATACCTTCGATTACTTTGAATAAGGACTCACAATTCCA  
GATAATTAACAAGCTAGAACTGCAAGTTGGGAAAGACAGTGATTGTTATAATCAAAGAATTTATTCTTCA  
TTGCCTGTTGAAGTTCCTTTGAATCACAAACGGTTTGTGATCTAACTCAAGCTGATCGTCTTGCC  
TCTATGATTTCTAGTTGAGGAGACAAAGAAAAGCGCTCTGATTCTCAAATTTGAAAATGACAGCGA  
TCTCTTTGTAGACTTGGCTGCCAAAATCAATCAAGACAATAGTCGAAAAAGTCCAAAATCCTACCTTGAA  
ATCCTGGCAGAAGTACGAGATTAAAAAGAAGACGCCAGTCTATAGAGCCAAGAATGTTACATAACCA  
AGAAATCATATACTGAGGTGATTCGAGATGTGATAAATGTGCACATGGAAGAAGTCAAGCAATCATTGGCA  
AGAAGAGCAAGAGAAGGCAGAGGATGATGCCGAAAAGAATGAAGAAAGGCGATCAGCTTCAGTAGATTCA  
CGGCAGTCTGGTGAAGCTATTTGGATGCTGAGTGTTCACGACATAGAAGGGATAGGAGTAGAAGCCCAC  
ATAAAGAAAAAGAAACAAAGATAAGGATAAAAACTGTGAGTCGAGAAGAAGGAAAGAGAGGGATGGGA  
AAGACACCATAGTCATAAAGAAGAAAGCAAAAAATA

**ACGCGT**ACGCGGCCGCTCGAGCAGAACTCATCTCAGAAGAGGATCTGGCAGCAAATGATATCCTGGATT  
ACAAGGATGACGACGATAAGGTTTAA



[View online »](#)

**Protein Sequence:** >RC212521 protein sequence  
Red=Cloning site Green=Tags(s)

MEGEPPPVEERRRLQEELNEFVESGCRITLEEVTASLGWLDLSDLDGEEAAAEDEVVICPYDSNHMPKSS  
 LAKHMASCLRLKMGYTKEEDEMYNPEFFYENVKIPISITLNKDSQFQIIKQARTAVGKSDCYNQRIYSS  
 LPVEVPLNHKRFVCDLTQADRLALYDFVVEETKKKRSDSQIENDSDLFVDLAAKINQDNRKSPKSYLE  
 ILAEVRDYKRRRQSYRAKNVHITKKSYTEVIRDVINVHMEELSNHWQEEQEKAEDDAEKNEERRSASVDS  
 RQSGGSYLDAECSRHRDRSRSPHKRKRKDKDKNCESRRRKRERDGERHHSHKRRKQKI

TRTRPLEQKLISEEDLAANDILDYKDDDDKV

**Chromatograms:** [https://cdn.origene.com/chromatograms/mk6444\\_a08.zip](https://cdn.origene.com/chromatograms/mk6444_a08.zip)

**Restriction Sites:** SgfI-MluI

**Cloning Scheme:**



**ACCN:** NM\_152551

**ORF Size:** 1017 bp

**OTI Disclaimer:** The molecular sequence of this clone aligns with the gene accession number as a point of reference only. However, individual transcript sequences of the same gene can differ through naturally occurring variations (e.g. polymorphisms), each with its own valid existence. This clone is substantially in agreement with the reference, but a complete review of all prevailing variants is recommended prior to use. [More info](#)

**OTI Annotation:** This clone was engineered to express the complete ORF with an expression tag. Expression varies depending on the nature of the gene.

**Components:** The ORF clone is ion-exchange column purified and shipped in a 2D barcoded Matrix tube containing 10ug of transfection-ready, dried plasmid DNA (reconstitute with 100 ul of water).

**Reconstitution Method:**

1. Centrifuge at 5,000xg for 5min.
2. Carefully open the tube and add 100ul of sterile water to dissolve the DNA.
3. Close the tube and incubate for 10 minutes at room temperature.
4. Briefly vortex the tube and then do a quick spin (less than 5000xg) to concentrate the liquid at the bottom.
5. Store the suspended plasmid at -20°C. The DNA is stable for at least one year from date of shipping when stored at -20°C.

**RefSeq:** [NM\\_152551.4](#)

**RefSeq Size:** 4173 bp

**RefSeq ORF:** 1020 bp

**Locus ID:** 154007

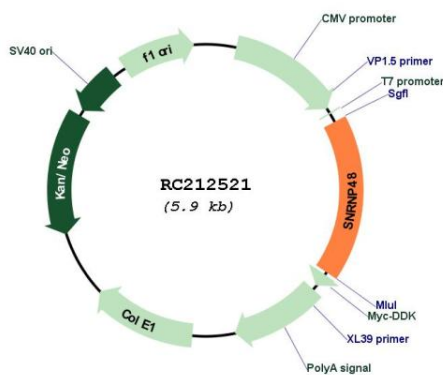
**UniProt ID:** [Q6IEG0](#)

**Cytogenetics:** 6p24.3

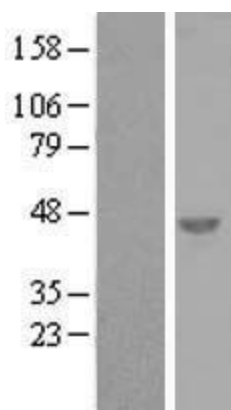
**MW:** 40 kDa

**Gene Summary:** Likely involved in U12-type 5' splice site recognition.[UniProtKB/Swiss-Prot Function]

**Product images:**



Circular map for RC212521



Western blot validation of overexpression lysate (Cat# [LY407462]) using anti-DDK antibody (Cat# [TA50011-100]). Left: Cell lysates from untransfected HEK293T cells; Right: Cell lysates from HEK293T cells transfected with RC212521 using transfection reagent MegaTran 2.0 (Cat# [TT210002]).