

Product datasheet for RC212517

ASB11 (NM_001012428) Human Tagged ORF Clone

Product data:

Product Type:	Expression Plasmids
Product Name:	ASB11 (NM_001012428) Human Tagged ORF Clone
Tag:	Myc-DDK
Symbol:	ASB11
Mammalian Cell Selection:	Neomycin
Vector:	pCMV6-Entry (PS100001)
E. coli Selection:	Kanamycin (25 ug/mL)
ORF Nucleotide Sequence:	>RC212517 representing NM_001012428 Red=Cloning site Blue=ORF Green=Tags(s)

TTTTGTAATACGACTCACTATAGGGCGGCCGGAATTCGTCGACTGGATCCGGTACCGAGGAGATCTGCC
GCC**CGATCGCC**

ATGCTTCAATTAAGTGGGAAAAATGAGAAGAATTGTGAAGTTTCAGAACGTATCAGAAGTCCGGACCAT
GGAAAGAGATTTCTTTGGGGATTATTTGTACACATTTTCAGGGAGATTGCTGGGCTGATCGATCCCC
ACTTCATGAAGCTGCAGCTCAGGGCGCTTACTGGCCCTAAAACCTTAATTGCACAAGGTGCAATGTG
AACCTTGTGACAATTAACCGGGTGTCTTCTCCACGAGGCATGCCTTGGAGGTACGTGGCCTGTGCCA
AAGCCTTATTGGAAAATGGTGCACAGTCAATGGAGTGACAGTTCACGGAGCCACACCCCTTTCAATGC
TTGCTGCAGCGGAGTGTGCATGTGCAATGTGCTGCTGGAGTTCGGAGCCAAGGCCAGTTGGAGGTG
CACCTGGCCTCGCCATCCATGAGGCAGTGAAGAGAGGTACAGAGAGTGCATGGAGATCCTGCTGGCAA
ATAATGTTAACATTGACCATGAGGTGCCTCAGCTCGGAACTCCCCTATATGTGGCCTGCACCTACCAGAG
GGTAGACTGTGTGAAGAACTTCTAGAATTAGGAGCCAGTGTGACCATGGCCAGTGGCTGGACACCCCA
CTCCATGCTGCAGCGAGGCAGTCCAATGTGGAGTGCATCCACCTGCTAACCGACTATGGAGCTAACCTGA
AGCGTAGAAATGCTCAGGGCAAAGTGCCTTGATCTGGCGCTCCTAAAAGCAGCGTGGAGCAGGCACT
CTTGCTCCGTGAAGGCCACCTGCTTTCCAGCTCTGCCGCTGTGTGTCGGAAAGTGTCTCGGTCGA
GCATGTATCAAGCCATCCACAAGCTACATCTGCCAGAGCCACTCGAACGATTCTCCTATACCAA

ACGCGTACGCGGCCGCTCGAGCAGAACTCATCTCAGAAGAGGATCTGGCAGCAAATGATATCCTGGATT
ACAAGGATGACGACGATAAGGTTTAA



[View online »](#)

Protein Sequence: >RC212517 representing NM_001012428
Red=Cloning site Green=Tags(s)

MLQLTGENEKNCEVSRIRRRSGPWKEISFGDYICHTFQGDCWADRSPHEAAAQGRLLALKTLIAQGVNV
 NLVTINRVSSLHEACLGGHVACAKALLENGAHVNGVTVHGATPLFNACCSGSAACVNVLLLEFGAKAQLLEV
 HLASPIHEAVKRGHRECMEILLANNVNIDHEVPQLGTPLYVACTYQRVDCVKLLELGASVDHGQWLDTP
 LHAAARQSNVEVIHLLTDYGANLKRRAQKGSALDLAAPKSSVEQALLLREGPPALSQLCRLCVRKCLGR
 ACHQAIHKLHLPEPLERFLLYQ

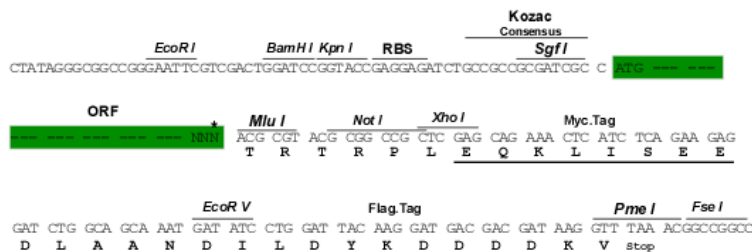
TRTRPLEQKLISEEDLAANDILDYKDDDDKV

Chromatograms: https://cdn.origene.com/chromatograms/mk8004_e03.zip

Restriction Sites: SgfI-MluI

Cloning Scheme:

Cloning sites used for ORF Shuttling:



* The last codon before the Stop codon of the ORF

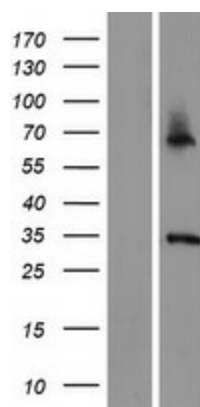
ACCN: NM_001012428

ORF Size: 906 bp

OTI Disclaimer: The molecular sequence of this clone aligns with the gene accession number as a point of reference only. However, individual transcript sequences of the same gene can differ through naturally occurring variations (e.g. polymorphisms), each with its own valid existence. This clone is substantially in agreement with the reference, but a complete review of all prevailing variants is recommended prior to use. [More info](#)

OTI Annotation: This clone was engineered to express the complete ORF with an expression tag. Expression varies depending on the nature of the gene.

Components: The ORF clone is ion-exchange column purified and shipped in a 2D barcoded Matrix tube containing 10ug of transfection-ready, dried plasmid DNA (reconstitute with 100 ul of water).



Western blot validation of overexpression lysate (Cat# [LY422864]) using anti-DDK antibody (Cat# [TA50011-100]). Left: Cell lysates from untransfected HEK293T cells; Right: Cell lysates from HEK293T cells transfected with RC212517 using transfection reagent MegaTran 2.0 (Cat# [TT210002]).