

## Product datasheet for **RC212508**

### CRSP9 (MED7) (NM\_001100816) Human Tagged ORF Clone

#### Product data:

Product Type:	Expression Plasmids
Product Name:	CRSP9 (MED7) (NM_001100816) Human Tagged ORF Clone
Tag:	Myc-DDK
Symbol:	CRSP9
Synonyms:	ARC34; CRSP9; CRSP33
Mammalian Cell Selection:	Neomycin
Vector:	pCMV6-Entry (PS100001)
E. coli Selection:	Kanamycin (25 ug/mL)
ORF Nucleotide Sequence:	>RC212508 representing NM_001100816 Red=Cloning site Blue=ORF Green=Tags(s)

TTTTGTAATACGACTCACTATAGGGCGGCCGGAATTCGTCGACTGGATCCGGTACCGAGGAGATCTGCC  
GCC**CGATCGCC**

ATGGGTGAACCACAGCAAGTGAGTGCCTTCCACCACCTCCAATGCAATATATCAAGGAATATACGGATG  
AAAATATTCAAGAAGGCTTAGCTCCAAGCCTCCCCTCCAATAAAAGACAGTTACATGATGTTGGCAA  
TCAGTTCCAATGTGATGATCTTATCATCCGCCCTTGGAAAGTCAGGGCATCGAACGGCTTCATCCTATG  
CAGTTTGATCACAAGAAAGAAGTGAAGAACTTAATATGTCTATCCTTATTAATTTCTTGGACCTTTTAG  
ATATTTAATAAGGAGCCCTGGGAGTATAAAACGAGAAGAGAACTAGAAGATCTTAAGCTGCTTTTGT  
ACACGTGCATCATCTTATAAATGAATACCGACCCACCAAGCAAGAGAGACCTTGAGAGTCATGATGGAG  
GTCCAGAAACGTCAACGGCTTGAACAGCTGAGAGATTTCAAAGCACCTGGAACGAGTAATTGAAATGA  
TTCAGAATTGCTTGGCTTCTTGGCTGATGATTTGCCTCATTGAGAAGCAGGAATGAGAGTAAAACTGA  
ACCAATGGATGCTGATGATAGCAACAATTGACTGGACAGAATGAACATCAAAGAGAAAATTCAGGTCAT  
AGGAGAGATCAGATTATAGAGAAAGATGCTGCCTTGTGTGCCTAATTGATGAGATGAATGAAAGACCA

**ACGCGT**ACGCGGCCGCTCGAGCAGAACTCATCTCAGAAGAGGATCTGGCAGCAAATGATATCCTGGATT  
ACAAGGATGACGACGATAAGGTTTAA



[View online »](#)

**Protein Sequence:** >RC212508 representing NM\_001100816  
Red=Cloning site Green=Tags(s)

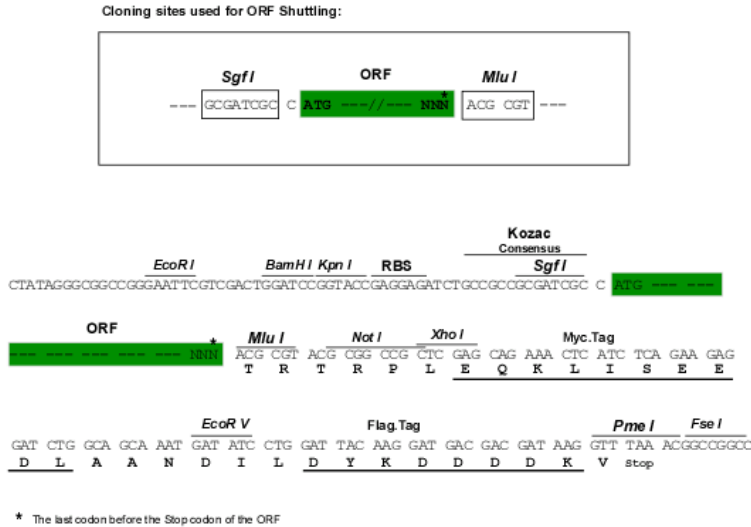
MGEPQQVSALPPPPMQYIKEYTDENIQEGLAPKPPPIKDSYMMFGNQFQCDDLIIIRPLESQGIERLHPM  
 QFDHKKELRKLNMSILINFLDLLILIRSPGSIKREKLEDLKLFFVHVHHLINERYPHQARETLRVMMME  
 VQKRQRLETAERFQKHLERVIEMIQNCLASLPDDLPHSEAGMRVKTEPMDADDSNNTGQNEHQRENSGH  
 RRDQIIIEKDAALCVLIDEMNERP

TRTRPLEQKLISEEDLAANDILDYKDDDDKV

**Chromatograms:** [https://cdn.origene.com/chromatograms/mk6416\\_e06.zip](https://cdn.origene.com/chromatograms/mk6416_e06.zip)

**Restriction Sites:** SgfI-MluI

**Cloning Scheme:**



**ACCN:** NM\_001100816

**ORF Size:** 699 bp

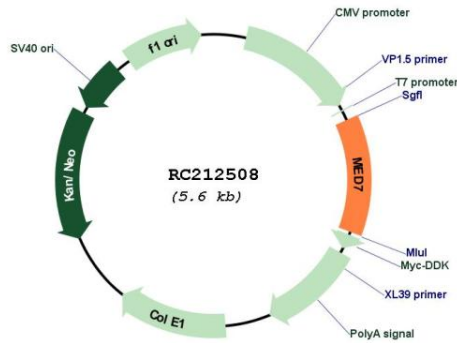
**OTI Disclaimer:** The molecular sequence of this clone aligns with the gene accession number as a point of reference only. However, individual transcript sequences of the same gene can differ through naturally occurring variations (e.g. polymorphisms), each with its own valid existence. This clone is substantially in agreement with the reference, but a complete review of all prevailing variants is recommended prior to use. [More info](#)

**OTI Annotation:** This clone was engineered to express the complete ORF with an expression tag. Expression varies depending on the nature of the gene.

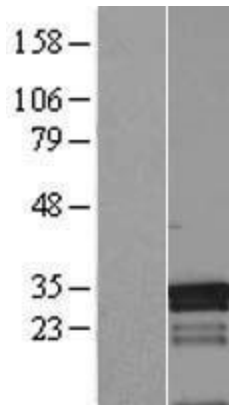
**Components:** The ORF clone is ion-exchange column purified and shipped in a 2D barcoded Matrix tube containing 10ug of transfection-ready, dried plasmid DNA (reconstitute with 100 ul of water).

<b>Reconstitution Method:</b>	<ol style="list-style-type: none"><li>1. Centrifuge at 5,000xg for 5min.</li><li>2. Carefully open the tube and add 100ul of sterile water to dissolve the DNA.</li><li>3. Close the tube and incubate for 10 minutes at room temperature.</li><li>4. Briefly vortex the tube and then do a quick spin (less than 5000xg) to concentrate the liquid at the bottom.</li><li>5. Store the suspended plasmid at -20°C. The DNA is stable for at least one year from date of shipping when stored at -20°C.</li></ol>
<b>RefSeq:</b>	<u><a href="#">NM_001100816.1</a></u> , <u><a href="#">NP_001094286.1</a></u>
<b>RefSeq Size:</b>	1400 bp
<b>RefSeq ORF:</b>	702 bp
<b>Locus ID:</b>	9443
<b>UniProt ID:</b>	<u><a href="#">O43513</a></u>
<b>Cytogenetics:</b>	5q33.3
<b>Protein Families:</b>	Druggable Genome, Transcription Factors
<b>MW:</b>	27.1 kDa
<b>Gene Summary:</b>	<p>The activation of gene transcription is a multistep process that is triggered by factors that recognize transcriptional enhancer sites in DNA. These factors work with co-activators to direct transcriptional initiation by the RNA polymerase II apparatus. The protein encoded by this gene is a subunit of the CRSP (cofactor required for SP1 activation) complex, which, along with TFIID, is required for efficient activation by SP1. This protein is also a component of other multisubunit complexes e.g. thyroid hormone receptor-(TR-) associated proteins which interact with TR and facilitate TR function on DNA templates in conjunction with initiation factors and cofactors. Two transcript variants encoding the same protein have been found for this gene. [provided by RefSeq, Jul 2008]</p>

Product images:



Circular map for RC212508



Western blot validation of overexpression lysate (Cat# [LY420292]) using anti-DDK antibody (Cat# [TA50011-100]). Left: Cell lysates from untransfected HEK293T cells; Right: Cell lysates from HEK293T cells transfected with RC212508 using transfection reagent MegaTran 2.0 (Cat# [TT210002]).