

## Product datasheet for **RC212506**

### RCL (DNPH1) (NM\_199184) Human Tagged ORF Clone

#### Product data:

**Product Type:** Expression Plasmids  
**Product Name:** RCL (DNPH1) (NM\_199184) Human Tagged ORF Clone  
**Tag:** Myc-DDK  
**Symbol:** RCL  
**Synonyms:** C6orf108; dj330M21.3; RCL  
**Mammalian Cell Selection:** Neomycin  
**Vector:** pCMV6-Entry (PS100001)  
**E. coli Selection:** Kanamycin (25 ug/mL)  
**ORF Nucleotide Sequence:** >RC212506 representing NM\_199184  
**Red=Cloning site Blue=ORF Green=Tags(s)**

TTTTGTAATACGACTCACTATAGGGCGGCCGGAATTCGTCGACTGGATCCGGTACCGAGGAGATCTGCC  
GCC**CGCATCGCC**

ATGGCTGCTGCCATGGTGCCGGGGCGCAGCGAGAGCTGGGAGCGCGGGGAGCCTGGCCGCCCGGCCCTGT  
ACTTCTCGGGGAGCATTTCGCGCGGACGCGAGGACAGGACGCTGTACGAGCGGATCGTGTCTCGGCTGCG  
GCGATTCGGGACAGTGCTCACCGAGCACGTGGCGGCCCGCAGCTGGCGCGCGGGGAAGAGGCTGCT  
GGGGGTGACAGGCTCATCCATGAGCAGGACCTGGAGTGGCTGCAGCAGCGGACGCTGGTCTGTCAGAA  
TGACACAGCCATCCTTGGGTGTAGGCTATGAGCTGGGCCGGCCGTGGCCTTTAACAAAGCGGATCCTGTG  
CCTGTTCCGCCCGAGTCTGGCCGCGGTGAGCACCCCAAGCCTCCCTCCTGGCTTCTATGGACCCAGCC  
CTCAGCTCCTTCCTGGTGGGCTC

**ACGCGT**ACGCGGCCGCTCGAGCAGAACTCATCTCAGAAGAGGATCTGGCAGCAAATGATATCCTGGATT  
ACAAGGATGACGACGATAAGGTTTAA

**Protein Sequence:** >RC212506 representing NM\_199184  
**Red=Cloning site Green=Tags(s)**

MAAAMVPRSESWERGEPGRPALYFCGSIRGGREDRTL YERIVSRLRRFGTVL TEHVAAAELGARGEEAA  
GGDRLIHEQDLEWLQQADVVAEVTQPSLGVGYELGRAVFNKRILCLFRPQSGRGEHPKPPSWLSMDPA  
LSSFPGGL

**TR**TRPLEQKLI SEEDLAANDILDYKDDDDKV

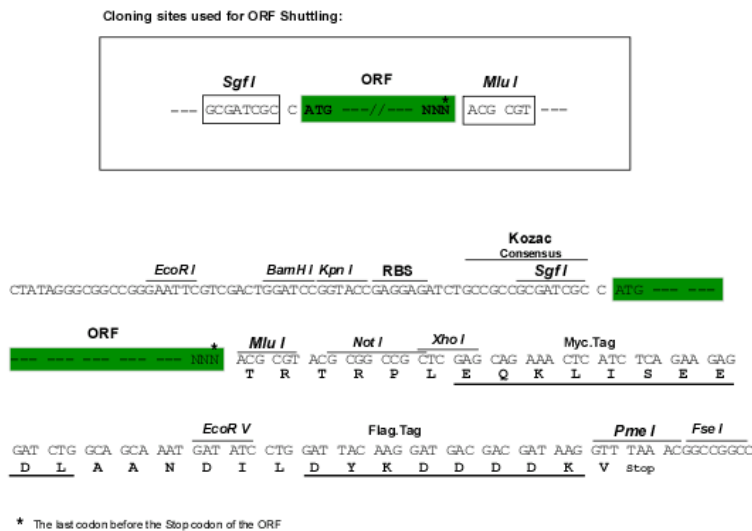
**Chromatograms:** [https://cdn.origene.com/chromatograms/ja1454\\_e11.zip](https://cdn.origene.com/chromatograms/ja1454_e11.zip)



[View online >](#)

Restriction Sites: SgfI-MluI

Cloning Scheme:



ACCN: NM\_199184

ORF Size: 444 bp

OTI Disclaimer: The molecular sequence of this clone aligns with the gene accession number as a point of reference only. However, individual transcript sequences of the same gene can differ through naturally occurring variations (e.g. polymorphisms), each with its own valid existence. This clone is substantially in agreement with the reference, but a complete review of all prevailing variants is recommended prior to use. [More info](#)

OTI Annotation: This clone was engineered to express the complete ORF with an expression tag. Expression varies depending on the nature of the gene.

Components: The ORF clone is ion-exchange column purified and shipped in a 2D barcoded Matrix tube containing 10ug of transfection-ready, dried plasmid DNA (reconstitute with 100 ul of water).

Reconstitution Method:

1. Centrifuge at 5,000xg for 5min.
2. Carefully open the tube and add 100ul of sterile water to dissolve the DNA.
3. Close the tube and incubate for 10 minutes at room temperature.
4. Briefly vortex the tube and then do a quick spin (less than 5000xg) to concentrate the liquid at the bottom.
5. Store the suspended plasmid at -20°C. The DNA is stable for at least one year from date of shipping when stored at -20°C.

RefSeq: [NM\\_199184.2](#)

RefSeq Size: 813 bp

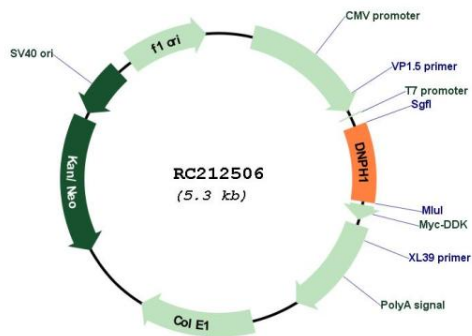
RefSeq ORF: 447 bp

Locus ID: 10591

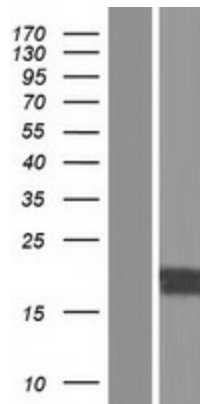
**UniProt ID:** [O43598](#)  
**Cytogenetics:** 6p21.1  
**MW:** 16 kDa

**Gene Summary:** This gene was identified on the basis of its stimulation by c-Myc protein. The latter is a transcription factor that participates in the regulation of cell proliferation, differentiation, and apoptosis. The exact function of this gene is not known but studies in rat suggest a role in cellular proliferation and c-Myc-mediated transformation. Two alternative transcripts encoding different proteins have been described. [provided by RefSeq, Jul 2008]

### Product images:



Circular map for RC212506



Western blot validation of overexpression lysate (Cat# [LY404680]) using anti-DDK antibody (Cat# [TA50011-100]). Left: Cell lysates from untransfected HEK293T cells; Right: Cell lysates from HEK293T cells transfected with RC212506 using transfection reagent MegaTran 2.0 (Cat# [TT210002]).