

Product datasheet for RC212504

SECISBP2L (NM_014701) Human Tagged ORF Clone

Product data:

Product Type:	Expression Plasmids
Product Name:	SECISBP2L (NM_014701) Human Tagged ORF Clone
Tag:	Myc-DDK
Symbol:	SECISBP2L
Synonyms:	SBP2L; SLAN
Mammalian Cell Selection:	Neomycin
Vector:	pCMV6-Entry (PS100001)
E. coli Selection:	Kanamycin (25 ug/mL)
ORF Nucleotide Sequence:	>RC212504 representing NM_014701 Red=Cloning site Blue=ORF Green=Tags(s)

TTTTGTAATACGACTCACTATAGGGCGGCCGGAATTCGTCGACTGGATCCGGTACCGAGGAGATCTGCC
GCC**CGATCGCC**

ATGGACCGAGCCCCACGGAGCAGAATGTCAAGCTGTCAGCTGAGGTGGAGCCATTTATCCCCAGAAGA
AGAGTCTGATACATTTATGATCCCTATGGCTCTCCCAAATGATAATGGAAGTGTTCGGTGTGGAACC
AACTCCAATCCCAGCTACCTGATTACTTGTACCCATTTGTGCAGGAAAACAGTCCAATAGACAGTTT
CCTTTATATAACAATGATACGATGGCAACAACCAATCCAAACCTACTGGACCATACTTTGCCTATC
CCATTATATCTGCTCAGCCGCTGTTTCTACAGAGTATACATATTATCAGCTGATGCCAGCACCATGTGC
CCAGGTTATGGGTTTCTATCATCTTTTCTACACCTTACTCCAACACCTTTAGGCTGCAAACTACTGTA
AATGCTATCACCACAGAATGCACTGAGCGTCCAAGTCAGCTTGGACAGGTCTTCCATTGTCCAGCCATC
GAAGCAGAAAACAGTAACAGAGGATCAGTGGTCCAAAAACAACAGCTTTTACAACAGCACATAAAAAGCAA
AAGGCCGCTGGTAAAAATGTAGCTACTCAGAAAGAAAACAAATGCAGCAGGTCTGATAGTCGATCAAAA
ATTGTGCTTCTGGTAGATGCTTCACAGCAAATGATTTCCCATCAGATATCGCTAACAAGTCTCTCTCAG
AGACCACTGCAACAATGCTCTGGAAGTCCAAGGCGAGGAGAAGAAGAGCATCCCACCTACTGCTGAATC
TTCTAGTGAGCAGGGGGCTAGTGAAGCCGACATTGACAGTGATAGTGGTACTGCAGTCCCAAACACAGC
AACAAACAGCCTGCAGCAGGGGCTTTGAGAAATCCTGATTCTGGGACCATGAATCATGTGGATCATCTA
TGTGTGCAGGTGGTGTAAATTGGTCCAATGTAACCTTGCCAGGCAACTCAGAAAAAACCTTGGATGGAAAA
AAATCAGACATTTTCTAGAGGTGGAAGGCAAACCTGAACAAAGAAATAATTCACAGGATGAAGATGGGTTT
CAAGAATAAATGAGAATGGAATGCTAAGGATGAGAATATTCAACAAAACTTTCTTAAAGTATTGG
ATGATTTACCTGAAAACTACCAATCAATATAGTTCAGACTCCAATTCCTATTACCACCTCAGTCCCAA
ACGTGCAAAAAGTCAGAAGAAGAAAGCTTTAGCAGCAGCCCTGCCACAGCTCAAGAGTATTCAGAAATA
AGTATGGAGCAAAAAAATTACAGGAAGCTTTATCAAAGCAGCTGGAAAAAGAATAAAACACCTGTGC
AGCTAGATTTAGGGGACATGTTAGCTGCTGGAAAAACAACAGCAAGCAATGAAAGCACGGCAAAATTA
TAACACCAGACCTCTGTCATATACAGTGGTACTGCAGCTTCTTTTCACTAAAGACTCTACTAATAGA



[View online »](#)

AAACCTTTAACCAAAAGTCAGCCCTGTTTGACATCCTTTAATTCTGTGGACATTGCTTCTTCTAAAGCAA
 AAAAAGGAAAAGAGAAGGAAATTGCAAACTAAAACGACCCACAGCACTTAAAAAGGTTATTTTAAAGA
 AAGAGAGGAAAAGAGGGGCGCTTAAGTGTGGACCACAATCTTTTGGGATCCGAGGAACCAACAGAAATG
 CACTTAGATTTTATTGATGACTTGCCACAGGAGATTGTTTCCAGGAAGATACTGGACTAAGCATGCCCA
 GTGATACTTCACTCTCCAGCAAGTCAGAAGTCTCCACTGTATGACACCTGTGCACAAGGCTCTCC
 TGCTAGTTCTGGAATAGGCAGTCCAATGGCATCTTCAACAATAACCAAAATCCACAGCAAAAGATTTAGA
 GAGTATTGTAATCAGGTTCTTTGTAAGAGATTGATGAATGTGTGACTCTTCTTCCAAGAGCTTGTC
 GTTTCCAGGAACGCATCTACCAAAAAGATCCTGTAAAGCAAAAAGCAAGGAGACGACTCGTTATGGGTCT
 AAGAGAAGTTACCAAAATATGAAGTTAAACAAGATCAAGTGTGTATAATTTCTCCAAACTGTGAAAA
 ATCCAGTCAAAAGGTGGTCTGGATGAGGCTCTCTATAATGTTATAGCCATGGCACGGGAACAAGAAATTC
 CTTTTGTGTTGCCCTTGAAGGAAAGCTCTAGGACGCTGTGTGAACAAGCTGGTTCCTGTTAGCGTAGT
 GGGAACTTCAACTACTTTGGTGTGAGAGCCTGTTTAAATAAATTAGTAGAACTCACTGAGGAGGCCAGG
 AAAGCATATAAGATATGGTTCAGCAATGGAACAGGAGCAGGCTGAGGAAGCCTTAAAGAATGTGAAGA
 AGGTACCACACCACATGGGACATTTCTCGGAATCCCTCTGCAGCAAGTCCATTTCTTCTGCAGTGTAT
 TTCTGAACCGATCTCTGAAGTAAATGAAAAGGAATATGAAACAAATTGGGAAACATGGTGGAACTTCA
 GATGGACTGGAAGCATCAGAAAAAGAGAAAGAGGTATCCTGTAAGCACAGCACTTCTGAAAAACCCAGTA
 AACTTCCATTTGACACACCCCAATTGGTAAGCAGCCATCATTAGTGGCTACAGGCACTACTACCTCAGC
 TACAAGTGTGGGAAATCCACAGCAAGTATAAGAGGAAGTGAAGCCAGATGACCTGGAATGGGCCTCA
 CAGCAGAGTACAGAGACTGGCTCTTTGGATGGCAGTTGCCGAGATCTTTTGAATTCCTCCATCACCAGCA
 CCACCAGCACTCTGTACCTGGCATGCTTGAAGAAGAAGAAGATGAAGATGAGGAGGAGGAGGAAGATTA
 TACTCATGAACCCATATCTGTAGAAGTGCAGCTCAATAGTAGAATTGAGTCTTGGGTCTCAGAGCCAG
 AGAACTATGGAACCCCTCAGCTTGGAAAAACCCTTAAATGGTCTGAGGAAGACAATGTAGAGCAAAGTG
 GAGAAGAGGAAGCAGAGGCGCCTGAGGTGCTGGAGCCAGGGATGGACAGTGAAGCATGGACTGCTGACCA
 GCAGGCCAGTCTGGGCAGCAGAAGTCCAGCAACTGCAGCTCGCTCAACAAAGAGCACTCTGATTCTAAT
 TACACAACGCAAACTACG

ACGCGTACGCGGCCGCTCGAGCAGAACTCATCTCAGAAGAGGATCTGGCAGCAATGATATCCTGGATT
 ACAAGGATGACGACGATAAGGTTTAA

Protein Sequence:

>RC212504 representing NM_014701
 Red=Cloning site Green=Tags(s)

MDRAPTEQNVKLSAEVEPFIPQKKSPDTFMIPMALPNDNGSVSGVEPTPIPSYLITCYPFVQENQSNRQF
 PLYNNDIRWQQPNPNTGPYFAYPIISAQPPVSTEYTYQLMPAPCAQVMGFYHPFPTPYSNTFQAANTV
 NAITTECTERPSQLGQVFP LSSHRSRNSNRGSVVPKQQLLQQHIKSKRPLVKNVATQKETNAAGPDSRSK
 IVLLVDASQQTDFPSDIANKSLSETTATMLWKSGRRRRASHPTAESSSEQGASEADIDSDSGYCSPKHS
 NNQPAAGALRNPDSGTMNHVESSMCAGGVNWSNVTCQATQKKPWMEKNQTF SRGGRQTEQRNNSQDEDGF
 QELNENGNAKDENIQKLSKVLDDL PENSPINIVQTPITTSVPKRAKSQKKKALAAALATAQEYSEI
 SMEQKQLQEALSKAAGKKNKTPVQLDLGDMLAAL EKQQQAMKARQITNTRPLSYTVVTAASFHTKDSNTR
 KPLTKSQPCLTSFNVDIASSKAKKKEKEIAKLRPTALKKVIKEREKKGRLTVDHNLGSEEPTEM
 HLDIDDL PQEIVSQEDTGLSMPSDTSLSPASQNSPYCMTVPVSGSPASSGIGSPMASSTITKIHSKRFR
 EYCNQVLCKEIDECVTL LLQELVSFQERIYQKDPVRAKARRRLVMGLREVTKHMKLNKIKCVIISPNCCK
 IQSKGGLDEALYNVIAMAREQEIFVVALGRKALGRCVNKLVPVSVVGFIFNYFGAESLFNKLVELTEEAR
 KAYKDMVAAMEQEQAEEALKNVKKVPHHMGHSRNP SAASAI SFCSVISEPISEVNEKEYETNWRNMVETS
 DGLEASENEKEYSCKHSTSEKPSKLPFDTPPIGKQPSLVATGSTTSATSAGKSTASDKEEVKPDDELEWAS
 QSTETGSLDGS CRDLLNSSITSTSTL VPGMLEEEEEDEEEEEDEYTHEPI SVEVQLNSRIESWVSETQ
 RTMETLQLGKTLNGSEEDNVEQSGEEEAPEVLEPGMDSEAWTADQASPGQKQSSNCSL NKEHSDSN
 YTTQTT

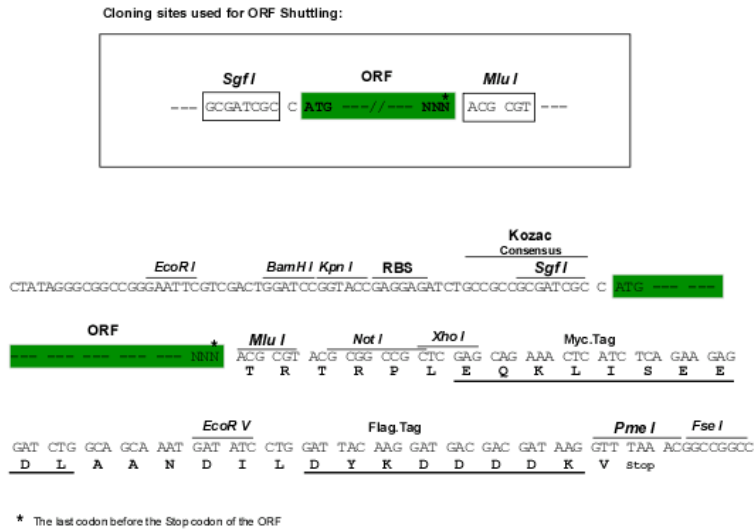
TRTRPLEQKLISEEDLAANDILDYKDDDDKV

Chromatograms:

https://cdn.origene.com/chromatograms/mk6683_b07.zip

Restriction Sites: SgfI-MluI

Cloning Scheme:



ACCN: NM_014701

ORF Size: 3168 bp

OTI Disclaimer: The molecular sequence of this clone aligns with the gene accession number as a point of reference only. However, individual transcript sequences of the same gene can differ through naturally occurring variations (e.g. polymorphisms), each with its own valid existence. This clone is substantially in agreement with the reference, but a complete review of all prevailing variants is recommended prior to use. [More info](#)

OTI Annotation: This clone was engineered to express the complete ORF with an expression tag. Expression varies depending on the nature of the gene.

Components: The ORF clone is ion-exchange column purified and shipped in a 2D barcoded Matrix tube containing 10ug of transfection-ready, dried plasmid DNA (reconstitute with 100 ul of water).

Reconstitution Method:

1. Centrifuge at 5,000xg for 5min.
2. Carefully open the tube and add 100ul of sterile water to dissolve the DNA.
3. Close the tube and incubate for 10 minutes at room temperature.
4. Briefly vortex the tube and then do a quick spin (less than 5000xg) to concentrate the liquid at the bottom.
5. Store the suspended plasmid at -20°C. The DNA is stable for at least one year from date of shipping when stored at -20°C.

RefSeq: [NM_014701.4](#)

RefSeq Size: 6779 bp

RefSeq ORF: 3171 bp

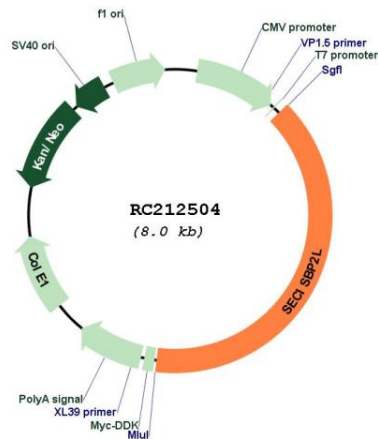
Locus ID: 9728

UniProt ID: [Q93073](#)

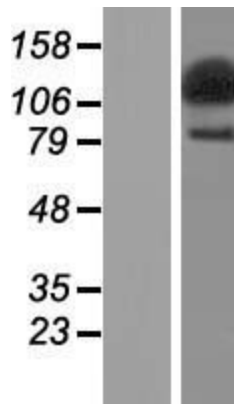
Cytogenetics: 15q21.1
 MW: 116.4 kDa

Gene Summary: Binds SECIS (Sec insertion sequence) elements present on selenocysteine (Sec) protein mRNAs, but does not promote Sec incorporation into selenoproteins in vitro. [UniProtKB/Swiss-Prot Function]

Product images:



Circular map for RC212504



Western blot validation of overexpression lysate (Cat# [LY415079]) using anti-DDK antibody (Cat# [TA50011-100]). Left: Cell lysates from untransfected HEK293T cells; Right: Cell lysates from HEK293T cells transfected with RC212504 using transfection reagent MegaTran 2.0 (Cat# [TT210002]).