

Product datasheet for **RC212502**

PPAR gamma (PPARG) (NM_015869) Human Tagged ORF Clone

Product data:

Product Type:	Expression Plasmids
Product Name:	PPAR gamma (PPARG) (NM_015869) Human Tagged ORF Clone
Tag:	Myc-DDK
Symbol:	PPAR gamma
Synonyms:	CIMT1; GLM1; NR1C3; PPARG1; PPARG2; PPARG5; PPARGgamma
Mammalian Cell Selection:	Neomycin
Vector:	pCMV6-Entry (PS100001)
E. coli Selection:	Kanamycin (25 ug/mL)



[View online »](#)

ORF Nucleotide Sequence:

>RC212502 representing NM_015869
 Red=Cloning site Blue=ORF Green=Tags(s)

TTTTGTAATACGACTCACTATAGGGCGGCCGGAATTCGTCGACTGGATCCGGTACCGAGGAGATCTGCC
 GCC**CGGATCGCC**

ATGGGTGAAACTCTGGGAGATTCTCTATTGACCCAGAAAGCGATTCTTCACTGATACACTGTCTGCAA
 ACATATACAAGAAATGACCATGGTTGACACAGAGATGCCATTCTGGCCACCACTTTGGGATCAGCTC
 CGTGGATCTCTCCGTAATGGAAGACCACTCCCACTCCTTTGATATCAAGCCCTTCACTACTGTTGACTTC
 TCCAGCATTCTACTCCACATTACGAAGACATTCCATTACAAGAACAGATCCAGTGGTTCAGATTACA
 AGTATGACCTGAACTTCAAGAGTACCAAAGTGAATCAAAGTGGAGCCTGCATCTCCACCTTATTATTC
 TGAGAAGACTCAGCTCTACAATAAGCCTCATGAAGAGCCTTCCAACCTCCCTCATGGCAATTGAATGTCGT
 GTCTGTGGAGATAAAGCTTCTGGATTTCACTATGGAGTTCATGCTTGTGAAGGATGCAAGGGTTTCTTCC
 GGAGAACAATCAGATTGAAGCTTATCTATGACAGATGTGATCTTAACTGTCGGATCCACAAAAAAGTAG
 AAATAAATGTCAGTACTGTCGGTTTCAGAAATGCCTTGCAGTGGGGATGTCTCATAATGCCATCAGTTTT
 GGGCGGATGCCACAGGCCGAGAAGGAGAAGCTGTTGGCGGAGATCTCCAGTGATATCGACCAGCTGAATC
 CAGAGTCCGCTGACCTCCGGGCCCTGGCAAAACATTTGTATGACTCATACATAAAGTCTTCCCGCTGAC
 CAAAGCAAAGGCGAGGGCGATCTTGACAGGAAAGACAACAGACAAATCACCATTCTGTTATCTATGACATG
 AATTCCTTAATGATGGGAGAAGATAAAATCAAGTTCAAACACATCACCCCTGCAGGAGCAGAGCAAAG
 AGGTGGCCATCCGCATCTTTCAGGGCTGCCAGTTTCGCTCCGTTGGAGGCTGTGCAGGAGATCACAGAGTA
 TGCCAAAAGCATTCTGGTTTTGTAATCTTGACTTGAACGACCAAGTAACTCTCCTCAAATATGGAGTC
 CACGAGATCATTACACAATGCTGGCCTCCTTGATGAATAAAGATGGGGTTCATATCCGAGGGCCAAG
 GCTTCATGACAAGGGAGTTTCTAAAGAGCCTGCGAAAGCCTTTTGGTGACTTTATGGAGCCCAAGTTTGA
 GTTTGCTGTGAAGTTCAATGCACCTGGAATTAGATGACAGCGACTTGGCAATATTTATTGCTGTCTATT
 CTGAGTGGAGACCGCCAGGTTTCTGTAATGTGAAGCCATTGAAGACATTCAAGACAACCTGCTACAAG
 CCCTGGAGCTCCAGCTGAAGCTGAACCACCCTGAGTCTCACAGCTGTTTCCAAGCTGCTCCAGAAAAT
 GACAGACCTCAGACAGATTGTCACGGAACAGTGCAGCTACTGCAGGTGATCAAGAAGACGGAGACAGAC
 ATGAGTCTTACCCGCTCCTGCAGGAGATCTACAAGGACTTGATC

ACGCGTACGCGGCCGCTCGAGCAGAAACTCATCTCAGAAGAGGATCTGGCAGCAAATGATATCTGGATT
 ACAAGGATGACGACGATAAGGTTTAA

Protein Sequence:

>RC212502 representing NM_015869
 Red=Cloning site Green=Tags(s)

MGETLGDSPIDPESDSFTDLSANISQEMTMVDTEMPFWPTNFGISSVDLSVMEDHSHSFDIKPFTTVD
 SSI~~STPHYEDIPFTRTDPVVADYKYDLKLQEYQSAIKVEPASPPYYSEKTQLYNKPHEEPSNSLMAIECR~~
 VCGDKASGFHYGVHACEGCKGFFRRTIRLKLIDRCDLNCR~~IHKKSRNKQYCRFQKCLAVGMSHNAIRF~~
 GRMPQAEKEKLLAEISSDIDQLNPESADLRALAKHLYDSYIKSFPLTKAKARAILTGKTTDKSPFVIYDM
 NSLMMGEDKIKFKHITPLQEQSKEVAIRIFQGCQFRSVEAVQEITEYAKSIPGFVNLDLNDQVTLKYG
 HEI~~IYTMLASLMNKDGLISEGQGFMTREFL~~SLR~~KPF~~GDF~~M~~EPK~~FEFAVKFNALELDDSDLAIFIAVII~~
 LSGDRPGLLNKPIEDIQDNLQALELQLKLNHP~~ESSQLFAKLLQKMTDLRQIVTEHVQLLQVIKKTETD~~
 MSLHPLLQE~~IYK~~DLY

TRTRPLEQKLISEEDLAANDILDYKDDDDKV

Chromatograms:

https://cdn.origene.com/chromatograms/mk6110_h03.zip

Restriction Sites:

Sgfl-Mlul

Cloning Scheme:



ACCN: NM_015869

ORF Size: 1515 bp

OTI Disclaimer: Due to the inherent nature of this plasmid, standard methods to replicate additional amounts of DNA in E. coli are highly likely to result in mutations and/or rearrangements. Therefore, OriGene does not guarantee the capability to replicate this plasmid DNA. Additional amounts of DNA can be purchased from OriGene with batch-specific, full-sequence verification at a reduced cost. Please contact our customer care team at custsupport@origene.com or by calling 301.340.3188 option 3 for pricing and delivery.

The molecular sequence of this clone aligns with the gene accession number as a point of reference only. However, individual transcript sequences of the same gene can differ through naturally occurring variations (e.g. polymorphisms), each with its own valid existence. This clone is substantially in agreement with the reference, but a complete review of all prevailing variants is recommended prior to use. [More info](#)

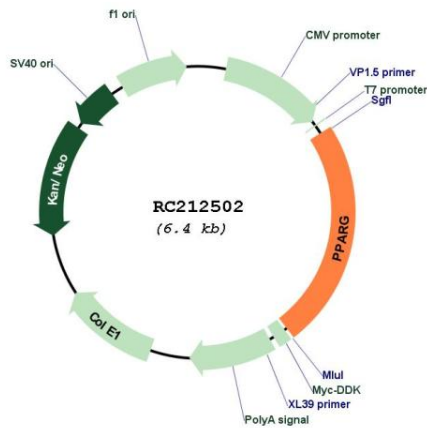
OTI Annotation: This clone was engineered to express the complete ORF with an expression tag. Expression varies depending on the nature of the gene.

Components: The ORF clone is ion-exchange column purified and shipped in a 2D barcoded Matrix tube containing 10ug of transfection-ready, dried plasmid DNA (reconstitute with 100 ul of water).

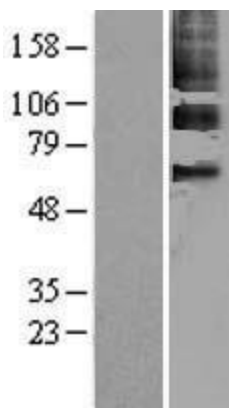
- Reconstitution Method:
1. Centrifuge at 5,000xg for 5min.
 2. Carefully open the tube and add 100ul of sterile water to dissolve the DNA.
 3. Close the tube and incubate for 10 minutes at room temperature.
 4. Briefly vortex the tube and then do a quick spin (less than 5000xg) to concentrate the liquid at the bottom.
 5. Store the suspended plasmid at -20°C. The DNA is stable for at least one year from date of shipping when stored at -20°C.

Note:	Plasmids are not sterile. For experiments where strict sterility is required, filtration with 0.22um filter is required.
RefSeq:	<u>NM_015869.5</u>
RefSeq Size:	1820 bp
RefSeq ORF:	1518 bp
Locus ID:	5468
UniProt ID:	<u>P37231</u>
Cytogenetics:	3p25.2
Protein Families:	Druggable Genome, Nuclear Hormone Receptor, Transcription Factors
Protein Pathways:	Huntington's disease, Pathways in cancer, PPAR signaling pathway, Thyroid cancer
MW:	57.4 kDa
Gene Summary:	This gene encodes a member of the peroxisome proliferator-activated receptor (PPAR) subfamily of nuclear receptors. PPARs form heterodimers with retinoid X receptors (RXRs) and these heterodimers regulate transcription of various genes. Three subtypes of PPARs are known: PPAR-alpha, PPAR-delta, and PPAR-gamma. The protein encoded by this gene is PPAR-gamma and is a regulator of adipocyte differentiation. Additionally, PPAR-gamma has been implicated in the pathology of numerous diseases including obesity, diabetes, atherosclerosis and cancer. Alternatively spliced transcript variants that encode different isoforms have been described. [provided by RefSeq, Jul 2008]

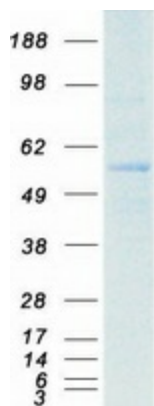
Product images:



Circular map for RC212502



Western blot validation of overexpression lysate (Cat# [LY402467]) using anti-DDK antibody (Cat# [TA50011-100]). Left: Cell lysates from untransfected HEK293T cells; Right: Cell lysates from HEK293T cells transfected with RC212502 using transfection reagent MegaTran 2.0 (Cat# [TT210002]).



Coomassie blue staining of purified PPARG protein (Cat# [TP312502]). The protein was produced from HEK293T cells transfected with PPARG cDNA clone (Cat# RC212502) using MegaTran 2.0 (Cat# [TT210002]).