

Product datasheet for **RC212500**

EIF2B4 (NM_015636) Human Tagged ORF Clone

Product data:

Product Type:	Expression Plasmids
Product Name:	EIF2B4 (NM_015636) Human Tagged ORF Clone
Tag:	Myc-DDK
Symbol:	EIF2B4
Synonyms:	EIF-2B; EIF2B; EIF2Bdelta
Mammalian Cell Selection:	Neomycin
Vector:	pCMV6-Entry (PS100001)
E. coli Selection:	Kanamycin (25 ug/mL)



[View online »](#)

ORF Nucleotide Sequence:

>RC212500 ORF sequence
 Red=Cloning site Blue=ORF Green=Tags(s)

TTTTGTAATACGACTCACTATAGGGCGGCCGGGAATTCGTCGACTGGATCCGGTACCGAGGAGATCTGCC
 GCC**CGGATCGCC**

ATGGCTGCTGTGGCCGTGGCTGTTCCGCGAGGACTCGGGATCCGGGATGAAGGCGGAGCTTCCCCCTGGGC
 CTGGGGCAGTGGGGAGGAAATGACCAAAGAAGAAAAGCTGCAGCTTCGGAAGGAAAAGAACAGCAGAA
 GAAGAAACGGAAGGAAGAAAAGGGGCGAGAACCAGAGACTGGCTCTGCTGTATCTGCAGCCCAATGTCAA
 GTAGGCCCAACCAGAGAAGTCCAGAAATCGGGCATTTCAGTTGGGCACTCCTCGGGAGAAAGTTCCAGCTG
 GTCGGAGTAAGGCCGAAGTTCGGGCTGAGCGTCGAGCCAAGCAGGAGGCCGAGCGGGCCCTGAAACAGGC
 AAGAAAAGGGGAACAAGGAGGACCCTCTAAGGCCAGCCCAGCACAGCTGGAGAAACCCCTCAGGA
 GTGAAGCGTCTCCCTGAGTACCCTCAGTTGATGACCTACTTCTGAGAAGGCTTGTAAAAAACAGAGC
 GTCAACAGGTTCTACACGAAAGGATTATGGATCCAAAGTCAGTCTTCTCTCACCTACCCAGTACAG
 CAGACAAAACCTCTGACCCAGTTTATGAGCATCCCATCTCTGTGATCCACCCAGCCATGGTGCAGTCT
 GGCTGCACTACTCCAGGGCCTGGTCACTGGCTCCAATGCCCGGTGATTGCCCTGCTTCGTGCCTTGC
 AGCAGGTGATTACAGGATTACACAACACCCGCTAATGAAGAAGTCTCCAGGGATCTAGTGAATAAACTAAA
 ACCCTACATGAGCTTCTGACTCAGTGCCTGCCCTGTCAGCGAGCATGCACAACGCCATCAAGTTCCTT
 AACAAAGGAAATCACCAAGTGTGGGCGAGTTCGAAGCGGGAAGAGGAGGCCAAGTCAAGTTCGAGCAGCCA
 TTGATCCGATATGTCAAGAGAAGATTGTCTAGCAGCTCAGGCAATTTACGCTTTGCTTACCAGAAGAT
 CAGTAATGGAGATGTGATCCTGGTATATGGATGCTCATCTCTGGTATCACGAATCTTTCAGGAGGCTTGG
 ACAGAGGGCCGGCGGTTTCGGGTGGTGTGGTGGACAGCCGCCATGGCTGGAAGGAAGGCACACACTAC
 GTTCTCTAGTCCATGCTGGTGTCCAGCCCTCTACCTGCTGATTCTGCAGCCTCCTATGTGCTCCGAGA
 GGTTTCCAAGGTCTATTGGGAGCTCATGCACTCTTGGCCAACGGGTCTGTGATGTCACGGGTAGGGACA
 GCACAGTTAGCCCTGGTGGCTCGAGCCATAATGTACCAGTGTGGTTTGTGTGAAACATACAAGTTCT
 GTGAGCGTGTGCAGACTGATGCCTTTGTCTCTAATGAGCTAGATGACCCTGATGATCTGCAATGTAAGCG
 GGGAGAACATGTTGCGTGGCTAACTGGCAGAACCACGCATCCCTACGGTTGTTGAATCTAGTCTATGAT
 GTGACTCCCCAGAGCTTGTGGATCTGGTGTACACGGAGCTGGGGATGATCCCTTGCAGTTCTGTACCTG
 TTGTTCTACGAGTCAAGAGCAGTGACCAG

ACGCGTACGCGGCCGCTCGAGCAGAAACTCATCTCAGAAGAGGATCTGGCAGCAAATGATATCCTGGATT
 ACAAGGATGACGACGATAAGGTTTAA

Protein Sequence:

>RC212500 protein sequence
 Red=Cloning site Green=Tags(s)

MAAVAVAVREDSGSGMKAELPPGPGAVGREMTKEEKLQLRKEKKQKKRKEEKGAEPETGSAVSAAQCQ
 VGPTRELPESGIQLGTPREKVPAGRSKAE LRAERRAKQE AERALKQARKGEQGGPPPKASPSTAGETPSG
 YKRLPEYPQVDDLLLRLLVKKPERQVPTRKDYGSVLSLFSHLPQYSRQNSLTQFMSIPSSVIHPAMVRL
 GLQYSQGLVSGSNARCIALLRALQQVIQDYTPPNEELSRDLVNKLPYMSFLTQCRPLSASMHNAIKFL
 NKEITSVGS SKREEEAKSELRAAIDRYVQEKIVLAAQAISRFA YQKISNGDVILVYGCSLVSRI LQEA W
 TEGRRFRVVVDSRPWLEGRHTRLRSLVHAGVPASYLLIPAASYVLPEVSKVLLGAHALLANGSVMSRVGT
 AQLALVARAHNPV LVCCEYKFCERVQ TDAFVSNELDDPDDLQCKRGEHVALANWQNHASLRLLNLVYD
 VTPPELVDLVITELGMIPCSSVPVVLRVKSSDQ

TRTRPLEQKLISEEDLAANDILDYKDDDDKV

Chromatograms:

https://cdn.origene.com/chromatograms/mk6367_a01.zip

Restriction Sites:

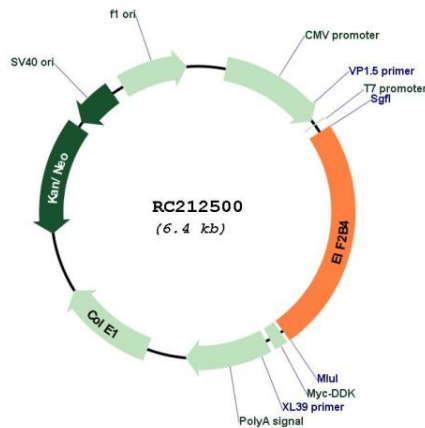
Sgfl-MluI

Domains: IF-2B

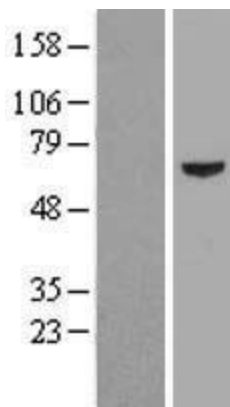
MW: 57.6 kDa

Gene Summary: Eukaryotic initiation factor 2B (EIF2B), which is necessary for protein synthesis, is a GTP exchange factor composed of five different subunits. The protein encoded by this gene is the fourth, or delta, subunit. Defects in this gene are a cause of leukoencephalopathy with vanishing white matter (VWM) and ovarioleukodystrophy. Multiple transcript variants encoding different isoforms have been found for this gene. [provided by RefSeq, Jul 2008]

Product images:



Circular map for RC212500



Western blot validation of overexpression lysate (Cat# [LY414432]) using anti-DDK antibody (Cat# [TA50011-100]). Left: Cell lysates from untransfected HEK293T cells; Right: Cell lysates from HEK293T cells transfected with RC212500 using transfection reagent MegaTran 2.0 (Cat# [TT210002]).



Coomassie blue staining of purified EIF2B4 protein (Cat# [TP312500]). The protein was produced from HEK293T cells transfected with EIF2B4 cDNA clone (Cat# RC212500) using MegaTran 2.0 (Cat# [TT210002]).