

Product datasheet for RC212499

FGL1 (NM_004467) Human Tagged ORF Clone

Product data:

Product Type:	Expression Plasmids
Product Name:	FGL1 (NM_004467) Human Tagged ORF Clone
Tag:	Myc-DDK
Symbol:	FGL1
Synonyms:	HFREP1; HP-041; HPS; LFIRE-1; LFIRE1
Mammalian Cell Selection:	Neomycin
Vector:	pCMV6-Entry (PS100001)
E. coli Selection:	Kanamycin (25 ug/mL)
ORF Nucleotide Sequence:	>RC212499 ORF sequence Red=Cloning site Blue=ORF Green=Tags(s)

TTTTGTAATACGACTCACTATAGGGCGGCCGGAATTCGTCGACTGGATCCGGTACCGAGGAGATCTGCC
GCC**CGATCGCC**

ATGGCAAAGGTGTTTCAGTTTCATCCTTGTACCACCGCTCTTACAATGGGCAGGGAAATTCGGCGCTCG
AGGACTGTGCCAGGAGCAGATGCGGCTCAGAGCCAGGTGCGCCTGCTTGAGACCCGGTCAAACAGCA
ACAGGTCAAGATCAAGCAGCTTTTGCAGGAGAATGAAGTCCAGTTCCTTGATAAAGGAGATGAGAATACT
GTCATTGATCTTGAAGCAAGAGGCAGTATGCAGATTGTTTCAGAGATTTTCAATGATGGGTATAAGCTCA
GTGGATTTTACAAAATCAAACCTCTCCAGAGCCAGCAGAATTTTCTGTTTATTGTGACATGTCCGATGG
AGGAGGATGGACTGTAATTCAGAGACGATCTGATGGCAGTGAAAACCTTTAACAGAGGATGGAAAGACTAT
GAAAATGGCTTTGGAAATTTGTCCAAAACATGGTGAATATTGGCTGGGCAATAAAAATCTTCACTTCT
TGACCACTCAAGAAGACTACACTTTAAAATCGACCTTGACAGATTTTGAATAAATAGCCGTTATGCACA
ATATAAGAATTTCAAAGTTGGAGATGAAAAGAATTTCTACGAGTTGAATATTGGGGAATATTCTGGAACA
GCTGGAGATTCCTTGCAGGGAATTTTCATCCTGAGGTGCAGTGGTGGGCTAGTCACCAAAGAATGAAAT
TCAGCACGTGGGACAGAGATCATGACAACTATGAAGGGAAGTGCAGAGAAGAAGATCAGTCTGGCTGGTG
GTTAACAGGTGTCACCTGCAAACCTGAATGGTGTATACTACAGCGGCCCTACACGGCTAAAACAGAC
AATGGGATTGTCTGGTACACCTGGCATGGTGGTGGTATTCTCTGAAATCTGTGGTTATGAAAATTAGGC
CAAATGATTTTATTCAAATGTAATT

ACGCGTACGCGGCCGCTCGAGCAGAAACTCATCTCAGAAGAGGATCTGGCAGCAAATGATATCCTGGATT
ACAAGGATGACGACGATAAGGTTTAA



[View online »](#)

Protein Sequence: >RC212499 protein sequence
Red=Cloning site Green=Tags(s)

MAKVFSFILVTTALTMGREISALEDCAQEQMRLRAQVRLLETRVKQQQVKIKQLLQENEVQFLDKGDENT
 VIDLGSKRQYADCSEIFNDGYKLSGFYKIKPLQSPAEFVSYCDMSDGGGWTVIQRRSDGSENFNRGWKDY
 ENGFGNFVQKHGEYWLGNKNLHFLTQEDYTLKIDLADFEKNSRYAQYKNFKVGDENFYELNIGEYSGT
 AGDSLAGNFHPEVQWASHQRMKFSTWDRDHDNYEGNCAEEDQSGWWFNRCHSANLNGVYVSGPYTAKTD
 NGIVWYTWHGWWYSLKSVVMKIRPNDIFPNVI

TRTRPLEQKLISEEDLAANDILDYKDDDDKV

Chromatograms: https://cdn.origene.com/chromatograms/mk6415_c07.zip

Restriction Sites: SgfI-MluI

Cloning Scheme:



ACCN: NM_004467

ORF Size: 936 bp

OTI Disclaimer: The molecular sequence of this clone aligns with the gene accession number as a point of reference only. However, individual transcript sequences of the same gene can differ through naturally occurring variations (e.g. polymorphisms), each with its own valid existence. This clone is substantially in agreement with the reference, but a complete review of all prevailing variants is recommended prior to use. [More info](#)

OTI Annotation: This clone was engineered to express the complete ORF with an expression tag. Expression varies depending on the nature of the gene.

Components: The ORF clone is ion-exchange column purified and shipped in a 2D barcoded Matrix tube containing 10ug of transfection-ready, dried plasmid DNA (reconstitute with 100 ul of water).

Reconstitution Method:

1. Centrifuge at 5,000xg for 5min.
2. Carefully open the tube and add 100ul of sterile water to dissolve the DNA.
3. Close the tube and incubate for 10 minutes at room temperature.
4. Briefly vortex the tube and then do a quick spin (less than 5000xg) to concentrate the liquid at the bottom.
5. Store the suspended plasmid at -20°C. The DNA is stable for at least one year from date of shipping when stored at -20°C.

RefSeq: [NM_004467.4](#)

RefSeq Size: 1285 bp

RefSeq ORF: 939 bp

Locus ID: 2267

UniProt ID: [Q08830](#)

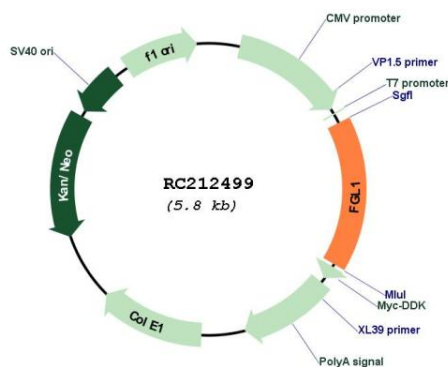
Cytogenetics: 8p22

Protein Families: Druggable Genome, Secreted Protein

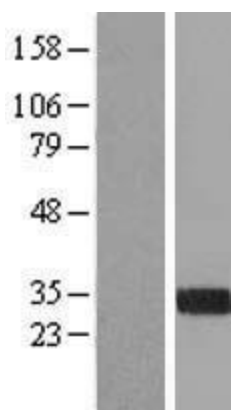
MW: 36.4 kDa

Gene Summary: Fibrinogen-like 1 is a member of the fibrinogen family. This protein is homologous to the carboxy terminus of the fibrinogen beta- and gamma- subunits which contains the four conserved cysteines of fibrinogens and fibrinogen related proteins. However, this protein lacks the platelet-binding site, cross-linking region and a thrombin-sensitive site which are necessary for fibrin clot formation. This protein may play a role in the development of hepatocellular carcinomas. Four alternatively spliced transcript variants encoding the same protein exist for this gene. [provided by RefSeq, Jul 2008]

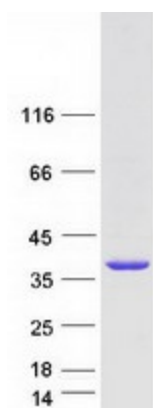
Product images:



Circular map for RC212499



Western blot validation of overexpression lysate (Cat# [LY404456]) using anti-DDK antibody (Cat# [TA50011-100]). Left: Cell lysates from untransfected HEK293T cells; Right: Cell lysates from HEK293T cells transfected with [RC224532] using transfection reagent MegaTran 2.0 (Cat# [TT210002]).



Coomassie blue staining of purified FGL1 protein (Cat# [TP312499]). The protein was produced from HEK293T cells transfected with FGL1 cDNA clone (Cat# RC212499) using MegaTran 2.0 (Cat# [TT210002]).