

Product datasheet for RC212498

Lymphocyte Antigen 6 Complex (LY6K) (NM_017527) Human Tagged ORF Clone

Product data:

Product Type:	Expression Plasmids
Product Name:	Lymphocyte Antigen 6 Complex (LY6K) (NM_017527) Human Tagged ORF Clone
Tag:	Myc-DDK
Symbol:	Lymphocyte Antigen 6 Complex
Synonyms:	CT97; HSJ001348; ly-6K; URLC10
Mammalian Cell Selection:	Neomycin
Vector:	pCMV6-Entry (PS100001)
E. coli Selection:	Kanamycin (25 ug/mL)
ORF Nucleotide Sequence:	>RC212498 ORF sequence Red=Cloning site Blue=ORF Green=Tags(s)

TTTTGTAATACGACTCACTATAGGGCGGCCGGAATTCGTCGACTGGATCCGGTACCGAGGAGATCTGCCGCCCGATCGCC

ATGAGGCTCCAAAGACCCCGACAGGCCCGCGGGTGGGAGGCGCGCCCCGGGGCGGGCGGGCTCCCCTACCGCCAGACCCGGGGAGAGGCGCGGAGGCTGCGAAGTTCCAGAAGGGCGGGAGGGGCGCGCGCGTGACCCCTCCCTGGGCACCGCTGGGACGATGGCGCTGCTCGCCTTGCTGCTGGTCTGGCCCTACCGGGGTGTGGACAGACGCCAACCTGACTGCGAGACAACGAGATCCAGAGGACTCCAGCGAACGGACGAGGGTGACAATAGAGTGTGGTGCATGTTGTGAGAGAGAAAACACTTTCGAGTGCCAGAACCCAAGGAGTGCAAAATGGACAGAGCCATACTGCGTTATAGCGCCGTGAAAATATTTCCACGTTTTTTCATGGTTGCGAAGCAGTGCTCCGCTGGTTGTGCAGCGATGGAGAGACCCAGCCAGAGGAGAAGCGGTTTTCTCTGGAAGAGCCCATGCCCTTCTTTTACCTCAAGTGTGTAAAATTCGCTACTGCAATTTAGAGGGGCCACCTATCACTCATCAGTGTTCAAAGAATATGCTGGGAGCATGGGTGAGAGCTGTGGTGGGCTGTGGCTGGCCATCCTCTGCTGCTGGCCTCCATTGCAGCCGGCCTCAGCCTGTCT

ACGCGTACGCGGGCGCTCGAGCAGAACTCATCTCAGAAGAGGATCTGGCAGCAATGATATCCTGGATTACAAGGATGACGACGATAAGGTTTAA



[View online »](#)

Protein Sequence: >RC212498 protein sequence
 Red=Cloning site Green=Tags(s)

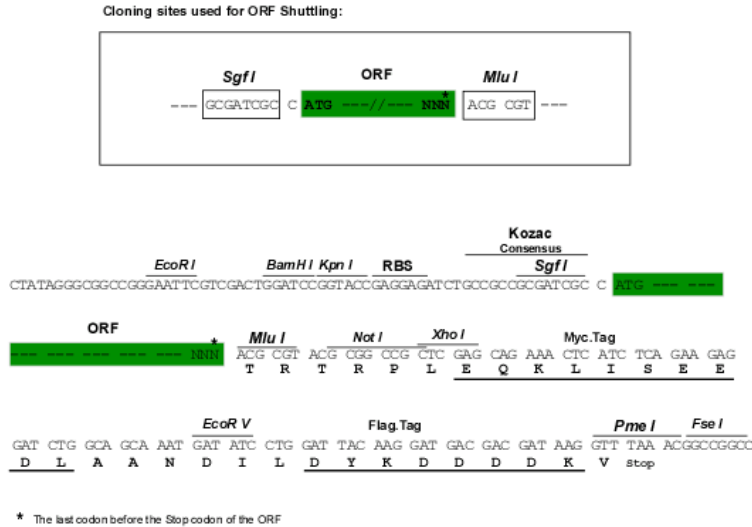
MRLQRPRQAPAGRRRAPRGRGSPYRPDPGRGARRLRRFQKGGEGAPRADPPWAPLGTMALLALLLVVAL
 PRVWTDANLTARQRDPEDSQRTDEGDNRVWCHVCERENTFECQNPRRCKWTEPYCVIAAVKIFPRFFMVA
 KQCSAGCAAMERPKEEKRFLLLEPMPFFYLKCKIRYCNLEGPPISSVFKEYAGSMGESCGLWLAIL
 LLLASIAAGLSLS

TRTRPLEQKLISEEDLAANDILDYKDDDDKV

Chromatograms: https://cdn.origene.com/chromatograms/mk6463_b08.zip

Restriction Sites: SgfI-MluI

Cloning Scheme:



ACCN: NM_017527

ORF Size: 669 bp

OTI Disclaimer: The molecular sequence of this clone aligns with the gene accession number as a point of reference only. However, individual transcript sequences of the same gene can differ through naturally occurring variations (e.g. polymorphisms), each with its own valid existence. This clone is substantially in agreement with the reference, but a complete review of all prevailing variants is recommended prior to use. [More info](#)

OTI Annotation: This clone was engineered to express the complete ORF with an expression tag. Expression varies depending on the nature of the gene.

Components: The ORF clone is ion-exchange column purified and shipped in a 2D barcoded Matrix tube containing 10ug of transfection-ready, dried plasmid DNA (reconstitute with 100 ul of water).

Reconstitution Method:

1. Centrifuge at 5,000xg for 5min.
2. Carefully open the tube and add 100ul of sterile water to dissolve the DNA.
3. Close the tube and incubate for 10 minutes at room temperature.
4. Briefly vortex the tube and then do a quick spin (less than 5000xg) to concentrate the liquid at the bottom.
5. Store the suspended plasmid at -20°C. The DNA is stable for at least one year from date of shipping when stored at -20°C.

Note: Plasmids are not sterile. For experiments where strict sterility is required, filtration with 0.22um filter is required.

RefSeq: [NM_017527.2](#), [NP_059997.2](#)

RefSeq Size: 1747 bp

RefSeq ORF: 498 bp

Locus ID: 54742

UniProt ID: [Q17RY6](#)

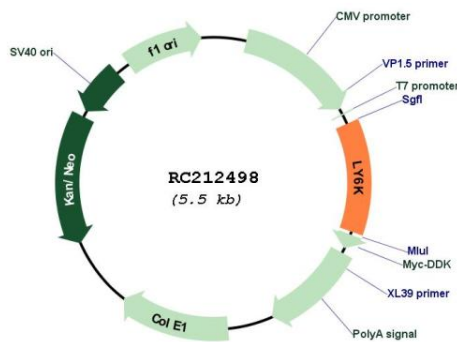
Cytogenetics: 8q24.3

Protein Families: Transmembrane

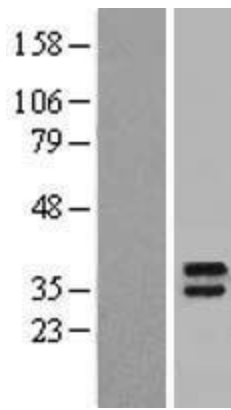
MW: 25 kDa

Gene Summary: Required for sperm migration into the oviduct and male fertility by controlling binding of sperm to zona pellucida (By similarity). May play a role in cell growth (PubMed:18089789). [UniProtKB/Swiss-Prot Function]

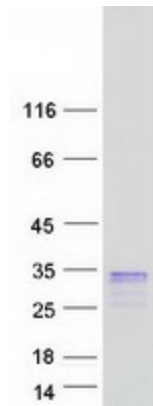
Product images:



Circular map for RC212498



Western blot validation of overexpression lysate (Cat# [LY413722]) using anti-DDK antibody (Cat# [TA50011-100]). Left: Cell lysates from untransfected HEK293T cells; Right: Cell lysates from HEK293T cells transfected with RC212498 using transfection reagent MegaTran 2.0 (Cat# [TT210002]).



Coomassie blue staining of purified LY6K protein (Cat# [TP312498]). The protein was produced from HEK293T cells transfected with LY6K cDNA clone (Cat# RC212498) using MegaTran 2.0 (Cat# [TT210002]).