

## Product datasheet for RC212497

### TIF1 gamma (TRIM33) (NM\_015906) Human Tagged ORF Clone

#### Product data:

**Product Type:** Expression Plasmids  
**Product Name:** TIF1 gamma (TRIM33) (NM\_015906) Human Tagged ORF Clone  
**Tag:** Myc-DDK  
**Symbol:** TIF1 gamma  
**Synonyms:** ECTO; PTC7; RFG7; TF1G; TIF1G; TIF1GAMMA; TIFGAMMA  
**Mammalian Cell Selection:** Neomycin  
**Vector:** pCMV6-Entry (PS100001)  
**E. coli Selection:** Kanamycin (25 ug/mL)  
**ORF Nucleotide Sequence:** >RC212497 representing NM\_015906  
 Red=Cloning site Blue=ORF Green=Tags(s)

TTTTGTAATACGACTCACTATAGGGCGGCCGGAATTCGTCGACTGGATCCGGTACCGAGGAGATCTGCC  
 GCCCGCATCGCC

ATGGCGGAAAACAAGGCGGGCGAGGCTGAGAGCGGGCGGGGCGAGCGGCAGCGCCGGTAACTG  
 CCGGGGCCCGGGCCCGCGCAGGAGGCGGAGCCGCTCTCACCGCGGTGCTGGTGGAGGAGGAGGA  
 GGAGGAAGGCGGCAGGGCCGGCGCTGAGGGCGGGCGGGCCGACGACGGGGGGTGGCCCGGCC  
 TCCTCGGGCTCGGCCAGGCTGCTTCATCTCCTCGGCCCTCAGTGGGACTGGAGTTGCCGGGGCGCAG  
 TATCGACGCCGGTCCAGCTCCAGCTCGGCTCCGCTCCGGTCCCTCGGCAGGGCCGCTCCTGGACC  
 GCCAGCTCGCTCCTGGACACCTGCGCCGTGTGTGAGCAGAGCTTGCAGAGCCGGCGTGAGCGGAGCCC  
 AAGCTGCTGCCCTGTCTTCACTCCTTGCCTGCGCTGCCTGCCGAGCCGGAGCGCCAGCTCAGCGTGC  
 CCATCCCGGGGGGAGCAACGGCGACATCCAGCAAGTTGGTGTAAACGGTGCCAGTATGCCGCCAAGA  
 ATGCAGACAGATAGACCTTGTGGATAATATTTTGTGAAAGACACATCTGAAGCTCCTAGCAGTTCTGAT  
 GAAAAATCAGAACAGGTATGTAAGACATGTATCGAAGCACATCAAAGAGTAAATTTACTAAAGTCACTTGATCAG  
 GAGAGTGGCTATGTAAGACATGTATCGAAGCACATCAAAGAGTAAATTTACTAAAGTCACTTGATCAG  
 GAAGAAAGAAGATGTCTCAGAGTCTGTTGGAGCATCTGGTCAACGCCCTGTTTTCTGCCCTGTACACAAA  
 CAAGAACAGTTGAACTTTTCTGTGAAACATGTGATAGATTGACATGTAGAGACTGTCAGTATTGGAAC  
 ACAAGAACATAGGTATCAGTTTTTGGAAAGAGCTTTTCAAATCAGAAGGGTGAATTGAGAATCTACT  
 GGCGAAACTTCTTGAGAAGAAGAATTATGTTTCACTTTGACAGTACTCAGGTGCAGAAATAGATAAAAGAA  
 GTAATGAGACTAACAAACGAGTAGAACAGGAAATTAAGTGGCCATTTTACCCTTATCAATGAAATTA  
 ATAAGAAAGGAAAATCTCTTACAACAGCTAGAGAATGTTACAAAGGAAAGACAGATGAAGTTACTACA  
 GCAGCAGAAATGACATCACAGGCTTTCCCGGCAGGTGAAGCATGTTATGAACTTCACAAATTTGGCAATT  
 GCAAGTGGCAGCAGCACAGCACTACTATACAGCAAGCGACTGATTACTTTCCAGTTGCGTCATATTTTGA  
 AAGCACGGTGTATCCTGCTCCCTGCTGCTAATGGAGCAATACGTTTCCATTGTGATCCCACCTTCTGGGC  
 AAAGAATGTAGCAATTTAGGTAATCTAGTAATAGAGAGTAAACCAGCTCCTGGTTATACCTCAATGTT



[View online >](#)

GTAGTTGGGCAAGTTCCTCCAGGGACAAACCACATTAGTAAAACCCCTGGACAGATTAACCTAGCACAGC  
TTCGACTCCAGCACATGCAACAACAAGTATATGCACAGAAACATCAGCAGTTGCAACAGATGAGGATGCA  
GCAACCACCAGCACCTGTACCACTACAACAACAACAACAACAGCATCCTAGACAAGCAGCCCCCTCAG  
ATGTTACAACAACAGCCTCCTCGATTGATCAGTGTGCAACAATGCAAAGAGGCAACATGAACTGTGGAG  
CTTTTCAAGCCCATCAGATGAGACTGGCTCAGAATGCTGCCAGAATACCAGGGATACCCAGGCACAGCGG  
CCCTCAATATTCATGATGCAGCCACACCTCCAAGACAACACTCAAACCCAGGGCATGCTGGACCCTTT  
CCCGTAGTATCGGTACACAACACCACAATCAACCAACGAGCCCTACTACAGCAACTATGGCAAAATGCAA  
ACCGAGGTCCCACAGCCCATCTGTTACAGCAATAGAGCTAATCCCCTCAGTTACCAATCCAGAAAACCT  
TCCATCGCTGCCAGATATTCCACCATACAGTTGGAAGATGCTGGCTCAAGTAGTTTAGATAATCTACTA  
AGTAGATACATCTCAGGCAGTCACCTACCCCCACAGCCTACAAGCACCATGAATCCTTCTCCAGGTCCTT  
CTGCCCTTTCTCCGGATCATCAGGTTTATCCAATTCTCACACACCTGTGAGACCCCAAGTACTTCTAG  
TACTGGCAGTCGAGGCAGCTGTGGTTCATCAGGAAGAAGTGTGAGAAGACAAGTCTTAGTTTCAAATCT  
GATCAGGTGAAGGTCAAGCAAGAACCTGGGACTGAAGATGAAATATGTAGCTTTTCAGGAGGTGAAAAAC  
AAGAAAAACAGAGGATGGCAGGAGGAGTCTTGATGTTGAGCAGTCTGAGAGTAGCTTGACACCACC  
TCTCTCAACCAACCTGCATCTAGAAAGTGAATTGGATGCATTGGCAAGCCTGGAAAACCATGTGAAAAC  
GAACCTGCAGATATGAATGAAAGCTGCAACAGTCAGGGCTCAGCAGCCTTGTTAATGAAAGTCCCCAA  
TTCGAAGCCTCATGCACAGGTCGGCAAGGATTGGAGGAGATGGCAACAATAAAGATGATGACCCAAATGA  
AGACTGGTGTGCTGTCTGCCAAAACGGAGGAGATCTTTGTGCTGCGAAAAATGTCCAAAGGTCTTTTCAT  
CTAACTTGTATGTTCCAACACTACTTAGCTTTCCAAGTGGGGACTGGATATGCACATTTGTAGAGATA  
TTGGAAAGCCAGAAGTTGAATATGATTGTGATAATTTGCAACATAGTAAGAAGGGGAAAACCTGCGCAGGG  
GTTAAGCCCCGTGGACCAAAGGAAATGTGAACGCTTCTGCTTTACCTCTATTGCCATGAATTAAGTATT  
GAATTCAGGAGCCTGTTCTGCTTCGATACCAAACACTATAAAAATTATAAAGAACAATGGATTTAT  
CCACCGTAAAAAAGAAGCTTCAGAAAAAACATTCCCAACACTACCAAATCCCGGATGACTTTGTGGCCGA  
TGTCCGTTTGATCTTCAAGAAGTGTGAAAGGTTTAAATGAAATGATGAAAGTTGTTCAAGTTTATGCAGAC  
ACACAAGAGATTAATTTGAAGGCTGATTCAGAAGTAGCTCAGGCAGGAAAAGCAGTTGCATTGTACTTTG  
AAGATAAACTCACAGAGATCTACTCAGACAGGACCTTCGCACCTTTGCCAGAGTTTGAGCAGGAAGAGGA  
TGATGGTGAAGTAACTGAGGACTCTGATGAAGACTTTATACAGCCCCGCAGAAAACGCCTAAAGTCAGAT  
GAGAGACCAGTACATATAAAG

ACGCGTACGCGGCCGCTCGAGCAGAAACTCATCTCAGAAGAGGATCTGGCAGCAATGATATCCTGGATT  
ACAAGGATGACGACGATAAGGTTTAA

**Protein Sequence:** >RC212497 representing NM\_015906  
 Red=Cloning site Green=Tags(s)

```

MAENKGGGEAESGGGSGSAPVTAGAAGPAAQEAPPLTAVLVEEEEEEGGRAGAEGGAAGPDDGGVAAA
SSGSAQAASSPAA SVGTGVAGGAVSTPAPAPASAPAGPSAGPPPGPPASLLDTCAVCQQSLQSRREAEP
KLLPCLHSFCLRCLPEPERQLSVP IPGGSNGDIQQVGVIRCPVCRQECRQIDLVDNYFVKDTSEAPSSSD
EKSEQVCTSCEDNASAVGFCVECGEWLCKTCIEAHQRVKFKTDHILIRKKEDVSESVGASGQRPVFCPVHK
QEQLKLF CETCDRLTCRDCQLLEHKEHRYQFLEEAFQNQKGAIENLLAKLLEKKNYVHFAATQVQNRIKE
VNETNKRVEQEIKVAIFTLINENKKGKSLQLLENVTKERQMKLLQQQNDITGLSRQVKHVMNFTNWA I
ASGSSTALLYSKRLITFQLRHILKARC DPVPAANGAIRFHCDPTFWAKNVVNLGNLVIESKPAPGYTPNV
VVGQVPPGTNHISKTPGQINLAQLRLQHMQQQVYAQKHQQLQQMRMQPPAPVPTTTTTTQQHPRQAAPQ
MLQQQPPRLISVQTMQRGNMNCGAFQAHQMLAQNAARIPGIPRHSGPQYSMMQPHLQRQHSNPGHAGPF
PVVSVHNTTINPTSPTTATMANANRGPTSPSVTAIELIPSVTNPENLPSLPDIPP IQLEDAGSSSLDNLL
SRYSISGSHLPPQPTSTMNPSGPSALSPGSSGLSNSHTPVRPPSTSTSGSRGSCGSSGRTAECTLSFKS
DQVKVKQEPGTEDEICSFSGGVKQEKTEDGRRSACMLSSPESSLTPPLSTNLHLESELDALASLENHVKT
EPADMNESCKQSGLSSLVNGKSPIRSLMHR SARIGGDGNNKDDDPNEDWCAVCQNGD LDCCEKCPKVFH
LTCHVPTLLSFP SGDWICTFCRDIGKPEVEYDCDNLQHSKKGKTAQGLSPVDQRK CERLLL YL YCHELSI
EFQEPVPASIPNYYKIIKKPMDLSTVKKKLQKKHSQHYQIPDDFVADVRLIFKNCERFNEMMKVVQVYAD
TQEINLKADSEVAQAGKAVALYFEDKLTEIYSDRTFAPLPEFEQEEDDGEVTEDSDEDFIQPRRKRLKSD
ERPVIK
  
```

TRTRPLEQKLISEEDLAANDILDYKDDDDKV

**Chromatograms:** [https://cdn.origene.com/chromatograms/mg2991\\_b10.zip](https://cdn.origene.com/chromatograms/mg2991_b10.zip)

**Restriction Sites:** SgfI-MluI

**Cloning Scheme:**



**ACCN:** NM\_015906

**ORF Size:** 3381 bp

**OTI Disclaimer:** Due to the inherent nature of this plasmid, standard methods to replicate additional amounts of DNA in E. coli are highly likely to result in mutations and/or rearrangements. Therefore, OriGene does not guarantee the capability to replicate this plasmid DNA. Additional amounts of DNA can be purchased from OriGene with batch-specific, full-sequence verification at a reduced cost. Please contact our customer care team at [custsupport@origene.com](mailto:custsupport@origene.com) or by calling 301.340.3188 option 3 for pricing and delivery.

The molecular sequence of this clone aligns with the gene accession number as a point of reference only. However, individual transcript sequences of the same gene can differ through naturally occurring variations (e.g. polymorphisms), each with its own valid existence. This clone is substantially in agreement with the reference, but a complete review of all prevailing variants is recommended prior to use. [More info](#)

**OTI Annotation:** This clone was engineered to express the complete ORF with an expression tag. Expression varies depending on the nature of the gene.

**Components:** The ORF clone is ion-exchange column purified and shipped in a 2D barcoded Matrix tube containing 10ug of transfection-ready, dried plasmid DNA (reconstitute with 100 ul of water).

**Reconstitution Method:**

1. Centrifuge at 5,000xg for 5min.
2. Carefully open the tube and add 100ul of sterile water to dissolve the DNA.
3. Close the tube and incubate for 10 minutes at room temperature.
4. Briefly vortex the tube and then do a quick spin (less than 5000xg) to concentrate the liquid at the bottom.
5. Store the suspended plasmid at -20°C. The DNA is stable for at least one year from date of shipping when stored at -20°C.

**Note:** Plasmids are not sterile. For experiments where strict sterility is required, filtration with 0.22um filter is required.

**RefSeq:** [NM\\_015906.4](#)

**RefSeq Size:** 8339 bp

**RefSeq ORF:** 3384 bp

**Locus ID:** 51592

**UniProt ID:** [Q9UPN9](#)

**Cytogenetics:** 1p13.2

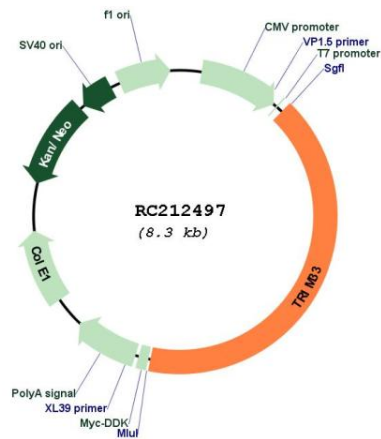
**Domains:** zf-B\_box, BROMO, RING, PHD, BBC

**Protein Families:** Druggable Genome, ES Cell Differentiation/IPS, Protein Kinase, Transcription Factors

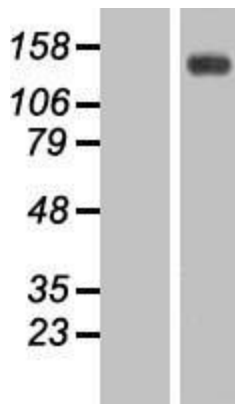
**MW:** 122.4 kDa

**Gene Summary:**

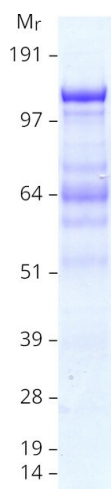
The protein encoded by this gene is thought to be a transcriptional corepressor. However, molecules that interact with this protein have not yet been identified. The protein is a member of the tripartite motif family. This motif includes three zinc-binding domains, a RING, a B-box type 1 and a B-box type 2, and a coiled-coil region. Three alternatively spliced transcript variants for this gene have been described, however, the full-length nature of one variant has not been determined. [provided by RefSeq, Jul 2008]

**Product images:**


Circular map for RC212497



Western blot validation of overexpression lysate (Cat# [LY414337]) using anti-DDK antibody (Cat# [TA50011-100]). Left: Cell lysates from untransfected HEK293T cells; Right: Cell lysates from HEK293T cells transfected with RC212497 using transfection reagent MegaTran 2.0 (Cat# [TT210002]).



Coomassie blue staining of purified TRIM33 protein (Cat# [TP312497]). The protein was produced from HEK293T cells transfected with TRIM33 cDNA clone (Cat# RC212497) using MegaTran 2.0 (Cat# [TT210002]).