

Product datasheet for RC212495

SFTPA2 (NM_001098668) Human Tagged ORF Clone

Product data:

Product Type:	Expression Plasmids
Product Name:	SFTPA2 (NM_001098668) Human Tagged ORF Clone
Tag:	Myc-DDK
Symbol:	SFTPA2
Synonyms:	COLEC5; PSAP; PSP-A; PSPA; SFTP1; SFTPA2B; SP-2A; SP-A; SPA2; SP11
Mammalian Cell Selection:	Neomycin
Vector:	pCMV6-Entry (PS100001)
E. coli Selection:	Kanamycin (25 ug/mL)
ORF Nucleotide Sequence:	>RC212495 representing NM_001098668 Red=Cloning site Blue=ORF Green=Tags(s)

TTTTGTAATACGACTCACTATAGGGCGGCCGGAATTCGTCGACTGGATCCGGTACCGAGGAGATCTGCC
GCC**CGATCGCC**

ATGTGGCTGTGCCCTCTGGCCCTCACCCCTCATCTTGATGGCAGCCTCTGGTGCTGCGTGCGAAGTGAAGG
ACGTTTGTGTGGAAGCCCTGGTATCCCCGGCACTCCTGGATCCCACGGCCTGCCAGGCAGGGACGGGAG
AGATGGTGTCAAAGGAGACCCTGGCCCTCAGGCCCATGGGTCCGCCTGGAGAAACACCATGTCCTCTCT
GGGAATAATGGGCTGCCTGGAGCCCTGGTGTCCCTGGAGAGCGTGGAGAGAAGGGGGAGGCTGGCGAGA
GAGGCCCTCAGGGCTTCCAGCTCATCTAGATGAGGAGCTCCAAGCCACACTCCAGACTTCAGACATCA
AATCCTGCAGACAAGGGGAGCCCTCAGTCTGCAGGGCTCCATAATGACAGTAGGAGAGAAGTCTTCTCC
AGCAATGGGCAGTCCATCACTTTTGATGCCATTAGGAGGCATGTGCCAGAGCAGGCGGCCGATTGCTG
TCCAAGGAATCCAGAGGAAAATGAGGCCATTGCAAGCTTCGTGAAGAAGTACAACATATGCCTATGT
AGGCCTGACTGAGGGTCCCAGCCCTGGAGACTTCCGCTACTCAGATGGGACCCCTGTAACTACACCAAC
TGGTACCGAGGGGAGCCTGCAGGTCGGGGAAAAGAGCAGTGTGTGGAGATGTACACAGATGGGCAGTGGA
ATGACAGGAATGCCTGTACTCCCGACTGACCATCTGTGAGTTC

ACGCGTACGCGGCCGCTCGAGCAGAACTCATCTCAGAAGAGGATCTGGCAGCAAATGATATCCTGGATT
ACAAGGATGACGACGATAAGGTTTAA



[View online »](#)

Protein Sequence: >RC212495 representing NM_001098668
Red=Cloning site Green=Tags(s)

MWLCPALTLILMAASGAACEVKDVCVGSPIGTPGSHGLPGRDGRDGVKGDPPGPMGPPGETPCPP
 GNNLPGAPGVPGERGEKGEAGERGPPGLPAHLDEELQATLHDFRHQILQTRGALSLQGSIMTVGEKVFS
 SNGQSITFDAIQEACARAGGRIAVPRNPEENEAIASFVKKYNTYAYVGLTEGSPGDFRYS DGTPVNYTN
 WYRGEPAGRGKEQC VEMYTDGQW NDRNCLYSRLTICEF

TRTRPLEQKLISEEDLAANDILDYKDDDDKV

Chromatograms: https://cdn.origene.com/chromatograms/mk6445_b05.zip

Restriction Sites: SgfI-MluI

Cloning Scheme:



ACCN: NM_001098668

ORF Size: 744 bp

OTI Disclaimer: The molecular sequence of this clone aligns with the gene accession number as a point of reference only. However, individual transcript sequences of the same gene can differ through naturally occurring variations (e.g. polymorphisms), each with its own valid existence. This clone is substantially in agreement with the reference, but a complete review of all prevailing variants is recommended prior to use. [More info](#)

OTI Annotation: This clone was engineered to express the complete ORF with an expression tag. Expression varies depending on the nature of the gene.

Components: The ORF clone is ion-exchange column purified and shipped in a 2D barcoded Matrix tube containing 10ug of transfection-ready, dried plasmid DNA (reconstitute with 100 ul of water).

Reconstitution Method:

1. Centrifuge at 5,000xg for 5min.
2. Carefully open the tube and add 100ul of sterile water to dissolve the DNA.
3. Close the tube and incubate for 10 minutes at room temperature.
4. Briefly vortex the tube and then do a quick spin (less than 5000xg) to concentrate the liquid at the bottom.
5. Store the suspended plasmid at -20°C. The DNA is stable for at least one year from date of shipping when stored at -20°C.

RefSeq: [NM_001098668.4](#)

RefSeq Size: 2189 bp

RefSeq ORF: 747 bp

Locus ID: 729238

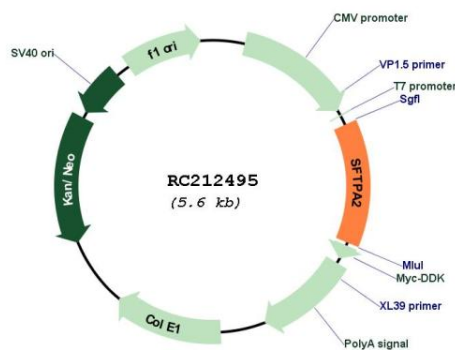
UniProt ID: [Q8IWL1](#)

Cytogenetics: 10q22.3

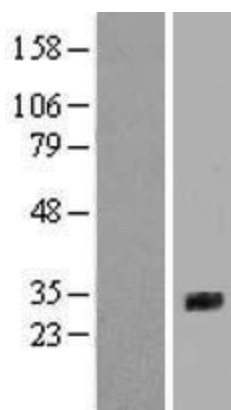
MW: 26 kDa

Gene Summary: This gene is one of several genes encoding pulmonary-surfactant associated proteins (SFTPA) located on chromosome 10. Mutations in this gene and a highly similar gene located nearby, which affect the highly conserved carbohydrate recognition domain, are associated with idiopathic pulmonary fibrosis. The current version of the assembly displays only a single centromeric SFTPA gene pair rather than the two gene pairs shown in the previous assembly which were thought to have resulted from a duplication. [provided by RefSeq, Sep 2009]

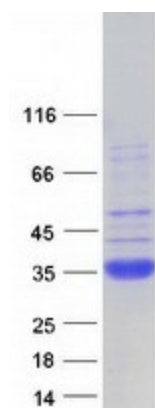
Product images:



Circular map for RC212495



Western blot validation of overexpression lysate (Cat# [LY416318]) using anti-DDK antibody (Cat# [TA50011-100]). Left: Cell lysates from untransfected HEK293T cells; Right: Cell lysates from HEK293T cells transfected with [RC221900] using transfection reagent MegaTran 2.0 (Cat# [TT210002]).



Coomassie blue staining of purified SFTPA2 protein (Cat# [TP312495]). The protein was produced from HEK293T cells transfected with SFTPA2 cDNA clone (Cat# RC212495) using MegaTran 2.0 (Cat# [TT210002]).