

## Product datasheet for **RC212494**

### DLX6 (NM\_005222) Human Tagged ORF Clone

#### Product data:

Product Type:	Expression Plasmids
Product Name:	DLX6 (NM_005222) Human Tagged ORF Clone
Tag:	Myc-DDK
Symbol:	DLX6
Mammalian Cell Selection:	Neomycin
Vector:	pCMV6-Entry (PS100001)
E. coli Selection:	Kanamycin (25 ug/mL)
ORF Nucleotide Sequence:	>RC212494 representing NM_005222 Red=Cloning site Blue=ORF Green=Tags(s)

TTTTGTAATACGACTCACTATAGGGCGGCCGGGAATTCGTCGACTGGATCCGGTACCGAGGAGATCTGCC  
GCC**CGGATCGCC**

ATGATGACCATGACTACGATGGCTGACGGCTTGGAAAGGCCAGGACTCGTCCAAATCCGCCTTCATGGAGT  
TCGGGCAGCAGCAGCAGCAGCACTCCCCGGCCATGGCAGGCGCGCACTACCCTCTGCACTGCCTGCA  
CTCGGGCGGGCGGGCGGCAGCGGCCGGCTCGCACCACCACCACCACCACCAGCACCACCACCACGGCTCG  
CCCTACGCGTCGGGCGGAGGGAACCTACAACCACCGCTCGCTCGCCGCCTACCCTACATGAGCCACT  
CGCAGCACAGCCCTTACCTCCAGTCCTACCACAACAGCAGCGCAGCCGCCAGACGCGAGGGGACGACAC  
AGATCAACAAAAAACAAGTACAGTGATTGAAAACGGGGAAATCAGGTTCAATGGAAAAGGGAAAAAGATTCCG  
AAGCCTCGGACCATTTATTCCAGCCTGCAGCTCCAGGCTTTAAACCATCGCTTTTCAGCAGACACAGTATC  
TGGCCCTTCCAGAGAGAGCCGAAGTGGCAGCTTCTTAGGACTGACACAAACACAGGTGAAGATATGGTT  
TCAGAACAACAGCTCTAAGTTTAAGAACTGCTGAAGCAGGGCAGTAATCCTCATGAGAGCGACCCCTC  
CAGGGCTCGGGCGCCCTGTCGCCACGCTCGCCAGCGCTGCCTCCAGTCTGGGACGTTTCTGCCTCGGCCA  
AGGGTGCAGTATGCCCCCAACAGCTACATGCCTGGCTATTCTCACTGGTACTCCTCTCCACACCAGGA  
CAGGATGCAGAGACCACAGATGATG

AG**CGGACCG**ACGCGTACGCGGCCGCTCGAGCAGAACTCATCTCAGAAGAGGATCTGGCAGCAAATGATATCC  
TGGATTACAAGGATGACGACGATAAGGTTTAA



[View online »](#)

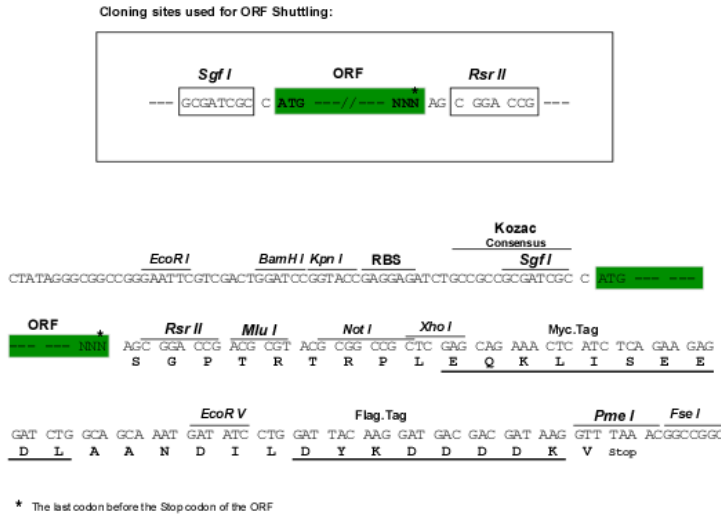
**Protein Sequence:** >RC212494 representing NM\_005222  
 Red=Cloning site Green=Tags(s)

MMTMTTMADGLEQDSSKSAFMEFGQQQQQHSPPAMAGAHYPLHCLHSAAAAAAGSHHHHHQHSHHHS  
 PYASGGNSYNHRSLAAYPYMHSQHSPLYLSYHNSSAAAQTRGDDTDQQKTTVIENGEIRFNGKGGKIR  
 KPRTIYSSLQLQALNHRFQQTQYLALPERAELAASLGLTQTQVKIWFQNKRSKFKLLKQGSNPHESDPL  
 QGSAALSPRSPALPPVWDVSASAKGVSMPNPNSYMPGYSHWYSSPHQDTMQRPM

SGPTRRRLEQKLISEEDLAANDILDYKDDDDKV

**Restriction Sites:** SgfI-RsrII

**Cloning Scheme:**



**ACCN:** NM\_005222

**ORF Size:** 795 bp

**OTI Disclaimer:** The molecular sequence of this clone aligns with the gene accession number as a point of reference only. However, individual transcript sequences of the same gene can differ through naturally occurring variations (e.g. polymorphisms), each with its own valid existence. This clone is substantially in agreement with the reference, but a complete review of all prevailing variants is recommended prior to use. [More info](#)

**OTI Annotation:** This clone was engineered to express the complete ORF with an expression tag. Expression varies depending on the nature of the gene.

**Components:** The ORF clone is ion-exchange column purified and shipped in a 2D barcoded Matrix tube containing 10ug of transfection-ready, dried plasmid DNA (reconstitute with 100 ul of water).

**Reconstitution Method:**

1. Centrifuge at 5,000xg for 5min.
2. Carefully open the tube and add 100ul of sterile water to dissolve the DNA.
3. Close the tube and incubate for 10 minutes at room temperature.
4. Briefly vortex the tube and then do a quick spin (less than 5000xg) to concentrate the liquid at the bottom.
5. Store the suspended plasmid at -20°C. The DNA is stable for at least one year from date of shipping when stored at -20°C.

**RefSeq:** [NM\\_005222.2](#), [NP\\_005213.2](#)

**RefSeq Size:** 1791 bp

**RefSeq ORF:** 882 bp

**Locus ID:** 1750

**UniProt ID:** [P56179](#)

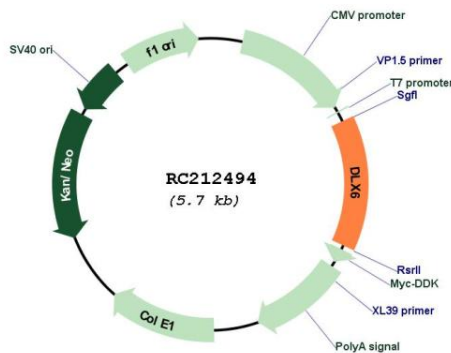
**Cytogenetics:** 7q21.3

**Protein Families:** Transcription Factors

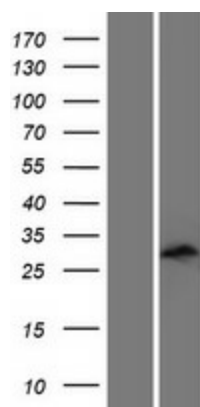
**MW:** 29.39 kDa

**Gene Summary:** This gene encodes a member of a homeobox transcription factor gene family similar to the *Drosophila* distal-less gene. This family is comprised of at least 6 different members that encode proteins with roles in forebrain and craniofacial development. This gene is in a tail-to-tail configuration with another member of the family on the long arm of chromosome 7. [provided by RefSeq, Jul 2008]

**Product images:**



Circular map for RC212494



Western blot validation of overexpression lysate (Cat# [LY417436]) using anti-DDK antibody (Cat# [TA50011-100]). Left: Cell lysates from untransfected HEK293T cells; Right: Cell lysates from HEK293T cells transfected with RC212494 using transfection reagent MegaTran 2.0 (Cat# [TT210002]).