

## Product datasheet for RC212491

### CCL3L3 (NM\_001001437) Human Tagged ORF Clone

#### Product data:

**Product Type:** Expression Plasmids  
**Product Name:** CCL3L3 (NM\_001001437) Human Tagged ORF Clone  
**Tag:** Myc-DDK  
**Symbol:** CCL3L3  
**Synonyms:** 464.2; D17S1718; GOS19-2; LD78; LD78BETA; SCYA3L; SCYA3L1  
**Mammalian Cell Selection:** Neomycin  
**Vector:** pCMV6-Entry (PS100001)  
**E. coli Selection:** Kanamycin (25 ug/mL)  
**ORF Nucleotide Sequence:** >RC212491 representing NM\_001001437  
 Red=Cloning site Blue=ORF Green=Tags(s)

TTTTGTAATACGACTCACTATAGGGCGCCGGGAATTCGTCGACTGGATCCGGTACCGAGGAGATCTGCC  
 GCC**CGGATCGCC**

**ATGCAGGTCTCCACTGCTGCCCTTGCCGTCTCTCTGCACCATGGCTCTCTGCAACCAGGTCTCTCTG**  
**CACCACTTGCTGCTGACACGCCGACCGCTGCTGCTTCAGCTACACCTCCCGACAGATCCACAGAATTT**  
**CATAGCTGACTACTTTGAGACGAGCAGCCAGTGTCCAAGCCAGTGTCATCTTCTCAACCAAGAGAGGC**  
**CGGCAGGTCTGTGCTGACCCAGTGAGGAGTGGGTCCAGAAATACGTCAGTGACCTGGAGCTGAGTGC**

**ACGCGTACGCGGCCGCTCGAGCAGAAACTCATCTCAGAAGAGGATCTGGCAGCAAATGATATCCTGGATT**  
**ACAAGGATGACGACGATAAGGTTTAA**

**Protein Sequence:** >RC212491 representing NM\_001001437  
 Red=Cloning site Green=Tags(s)  
 MQVSTAALAVLLCTMALCNQVLSAPLAADTPTACCFSYTSRQIPQNFADYFETSSQCSKPSVIFLTRKG  
 RQVCADPSEEWQKYVSDLELSA

**TRTRPLEQKLISEEDLAANDILDYKDDDDKV**

**Chromatograms:** [https://cdn.origene.com/chromatograms/mk8100\\_h07.zip](https://cdn.origene.com/chromatograms/mk8100_h07.zip)

**Restriction Sites:** Sgfl-Mlul



[View online »](#)

**Cloning Scheme:**


**ACCN:** NM\_001001437

**ORF Size:** 279 bp

**OTI Disclaimer:** The molecular sequence of this clone aligns with the gene accession number as a point of reference only. However, individual transcript sequences of the same gene can differ through naturally occurring variations (e.g. polymorphisms), each with its own valid existence. This clone is substantially in agreement with the reference, but a complete review of all prevailing variants is recommended prior to use. [More info](#)

**OTI Annotation:** This clone was engineered to express the complete ORF with an expression tag. Expression varies depending on the nature of the gene.

**Components:** The ORF clone is ion-exchange column purified and shipped in a 2D barcoded Matrix tube containing 10ug of transfection-ready, dried plasmid DNA (reconstitute with 100 ul of water).

**Reconstitution Method:**

1. Centrifuge at 5,000xg for 5min.
2. Carefully open the tube and add 100ul of sterile water to dissolve the DNA.
3. Close the tube and incubate for 10 minutes at room temperature.
4. Briefly vortex the tube and then do a quick spin (less than 5000xg) to concentrate the liquid at the bottom.
5. Store the suspended plasmid at -20°C. The DNA is stable for at least one year from date of shipping when stored at -20°C.

**RefSeq:** [NM\\_001001437.4](#)

**RefSeq Size:** 780 bp

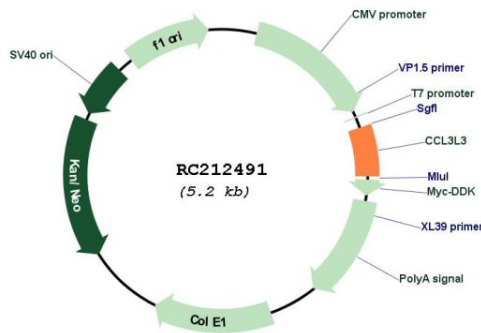
**RefSeq ORF:** 282 bp

**Locus ID:** 414062

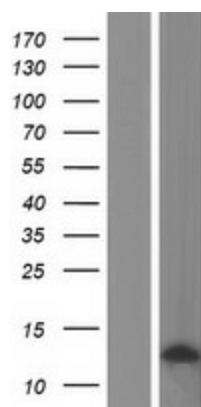
**UniProt ID:** [P16619](#)  
**Cytogenetics:** 17q12  
**Protein Families:** Druggable Genome  
**Protein Pathways:** Chemokine signaling pathway, Cytokine-cytokine receptor interaction  
**MW:** 10.2 kDa

**Gene Summary:** This gene is one of several cytokine genes that are clustered on the q-arm of chromosome 17. Cytokines are a family of secreted proteins that function in inflammatory and immunoregulatory processes. The protein encoded by this gene binds to several chemokine receptors, including chemokine binding protein 2 and chemokine (C-C motif) receptor 5 (CCR5). CCR5 is a co-receptor for HIV, and binding of this protein to CCR5 inhibits HIV entry. The copy number of this gene varies among individuals, where most individuals have one to six copies, and a minority of individuals have zero or more than six copies. There are conflicting reports about copy number variation of this gene and its correlation to disease susceptibility.[provided by RefSeq, Apr 2014]

**Product images:**



Circular map for RC212491



Western blot validation of overexpression lysate (Cat# [LY424355]) using anti-DDK antibody (Cat# [TA50011-100]). Left: Cell lysates from untransfected HEK293T cells; Right: Cell lysates from HEK293T cells transfected with RC212491 using transfection reagent MegaTran 2.0 (Cat# [TT210002]).