

Product datasheet for **RC212488**

Rabenosyn 5 (RBSN) (NM_022340) Human Tagged ORF Clone

Product data:

Product Type:	Expression Plasmids
Product Name:	Rabenosyn 5 (RBSN) (NM_022340) Human Tagged ORF Clone
Tag:	Myc-DDK
Symbol:	Rabenosyn 5
Synonyms:	Rabenosyn-5; ZFYVE20
Mammalian Cell Selection:	Neomycin
Vector:	pCMV6-Entry (PS100001)
E. coli Selection:	Kanamycin (25 ug/mL)



[View online »](#)

**ORF Nucleotide
Sequence:**

>RC212488 ORF sequence
 Red=Cloning site Blue=ORF Green=Tags(s)

TTTTGTAATACGACTCACTATAGGGCGGCCGGAATTCGTCGACTGGATCCGGTACCGAGGAGATCTGCC
 GCC**CGGATCGCC**

ATGGCTTCTCTGGACACCCAGGGGAAGTGAGGGAGGGCTTCTCTGCCCTCTGTGCCTGAAGGATCTGC
 AGTCTTTCTATCAGCTTCACTCACATTACGAGGAAGAACAACACTCAGGGGAAGACCGTGATGTCAAAGGGCA
 AATTAAGTCTTGTCCAGAAGGCTAAAAAAGCAAAGGACAGGTTGTTGAAACGAGAAGGGGATGATCGA
 GCAGAGTCAGGGACCCAAGGATATGAGTCTTTCAGCTATGGAGGGGTTGATCCTTACATGTGGGAACCC
 AGGAGCTTGGTGTGTGAGAAGCCATCTTCCGACTTCAAAAAACACCGAGCTGTAGAATTGACCACTA
 TGTTGTGGAAGTCAATAAACTAATAATCAGGTTAGAGAAGCTCACTGCATTTGACAGAACAATACTGAG
 TCTGCAAAGATTCGAGCAATAGAAAAGTCTGTGGTGCCTTGGGTCAACGACCAGGATGTCCTTTCTGTC
 CAGACTGTGGGAATAAGTTCAGCATCCGGAACCGCCACCCTGCCGCTCTGCGGGTCTATTATGTG
 CAAGAAGTGTATGGAGCTCATCAGCCTTCCCTTGGCAAACAAGCTCACCAGTGCCAGCAAGGAGTCCCTG
 AGCACCCACACGACCCAGCCAGTCACCAACAGTGTCCATGGCTCCCGCCGAGGCAGCATCAGCAGCA
 TGAGCAGTGTGAGCTCGGTCTGGATGAGAAGGACGATGACCGGATCCGCTGCTGTACACACTGCAAGGA
 CACGCTGCTCAAGAGAGAGCAGCAGATTGATGAGAAGGAGCACACACCTGACATCGTGAAGCTCTACGAG
 AAATTACGACTTTGCATGGAGAAAGTTGACCAGAAAGCTCCAGAATACATCAGGATGGCAGCATCATTAA
 ATGCTGGGGAGACAACCTACAGTCTGGAACATGCCAGTGACCTTCGAGTGGAAAGTGCAGAAAAGTGTATGA
 GCTGATAGACGCTTAAAGTAAGAAGATCTAACCTTGGGCTTGAACCAGGACCCTCCACCACATCCAAGC
 AATTTGCGGCTGCAGAGAATGATCAGATACTCAGTACACTTTTGTGCAGGAAAAGTTGCTTGGTTTGA
 TGTCACTGCCAACCAAGAACAGTTTGGGAAGTGAAGAAAGAAAGGAAGGAGGAAATGGAGAGGAAGAG
 GGCCGTGGAGAGACAAGCTGCCCTGGAGTCCCAGCGAAGGCTTGAGGAAAAGGCAGAGTGGCTGGCTTCT
 CGAGCGGCCAACGGGAGGTGGCATCTCTCCGAGGGGCCCTGCCCTTGGAAAAGGCTGAGGGCTGGC
 TCCCACTGTGAGGAGTCAAGGGCAGAGTGAAGTCAAGCCGCTCCTCCAGCAGATCCACAACATCAC
 ATCATTATCAGGCAGGCCAAGGCCGCGGGCCGCATGGATGAAGTGCACACTCTGCAGGAGAACCTGCGG
 CAGCTGCAGGACGAGTATGACCAGCAGCAGACAGAGAAGGCCATCGAGCTGTCCCGGAGGCAGGCTGAGG
 AGGAGGACCTGCAGCGGGAACAGCTGCAGATGTTGCGTGAACGGGAGTTGGAACGAGAAAGGGAGCAGTT
 TCGGGTGGCATCCCTGCACACACGACTCGGTCCCTGGACTTCAGAGAAATCGGCCCTTTTCAGCTGGAG
 CCCAGCAGAGAGCCTCGCACCCACCTTGTATGCTTTGGATCTAGGCTCTTCCCAGTTCGAAGCAGCA
 CAGCTCCCAAGACCCCTTCACTTAGCTCAACTCAACCCACCAGAGTGTGGTCTGGGCCCCAGCCGTTGG
 CCAGGAGCGCTTACCCAGAGCAGCATGCCACAGCAACATGAGGGGCCCTCCTTAAACCCCTTTGATGAG
 GAAGACCTCTCCAGCCCATGGAAGAGGCCACTACTGGTCTCCTGCTGCAGGGGTTTCTTAGACCCCT
 CAGCCCGCATCCTGAAAGAGTACAATCCTTTGAGGAAGAGGACGAGGAGGAGGAAGCAGTGGCAGGGAA
 TCCATTATTCAGCCAGACAGCCAGCTCCTAACCCCTTCAGTGAGGAAGACGAACATCCCAGCAGAGG
 CTCTCAAGCCCTCTGGTTCCTGGTAACCCCTTTGAGGAACCCACCTGTATCAACCCCTTTGAGATGGACA
 GTGACAGTGGGCCAGAGGCTGAGGAGCCATAGAGGAAGAGCTCCTCCTGCAGCAGATCGATAACATCAA
 GGCATACATCTTTGATGCCAAGCAGTGGCGCCGCTGGATGAGGTAGAGGTGCTGACAGAGAATCTGCGG
 GAGCTGAAGCACACCCCTGGCCAAGCAGAAGGGGGCACTGACTG

ACGCGTACGCGGCCGCTCGAGCAGAACTCATCTCAGAAGAGGATCTGGCAGCAAATGATATCTGGATT
 ACAAGGATGACGACGATAAGGTTTAA

Protein Sequence: >RC212488 protein sequence
Red=Cloning site Green=Tags(s)

MASLDDPGEVREGFLCPLCLKDLQSFYQLHSHYEEHSGEDRDVKGQIKSLVQKAKKADRLKREGDDR
AESGTQGYESFSYGGVDPYMWEPQELGAVRSHLSDFKKHRAARIDHYVVEVNKLIIRLEKLTAFDRTNTE
SAKIRAIIEKSVVPWVNDQVFPDCGNKFSIRNRRHHCRLCGSIMCKKCMELISLPLANKLTSASKESL
STHTSPSQSPNSVHGSRRGSISSMSSVSSVLDEKDDDRIRCCTHCKDTLLKREQQIDEKEHTPDIVKLYE
KLRLCMEKVDQKAPEYIRMAASLNAGETTSLEHASDLRVEVQKVYELIDALSKKILTLGLNQDPPPHPS
NLRLQRMIRYSATL FVQEKL LGLMSLPTKEQFEELKKRKEEMERKRAVERQAAL ESQRRL EERQSGLAS
RAANGEVASLRRGPAPLRKAEGWPLSGGQGQSESDP LLQQIHNITSFIRQAKAAGRMDEVRTLQENLR
QLQDEYDQQTEKAIEL SRRQAEEDLQREQLQMLRERELEREREQFRVASLHTRTRSLDFREIGPFQLE
PSREPRTHLAYALDLGSSPVPSSTAPKTPSL SSTQPTRVWSGPPAVGQERLPQSSMPQQHEGPSLNPFD
EDLSSPMEEATTGPPAAGVSLDPSARILKEYNPFEEEEEEEA VAGNPF IQPDS PAPANPF SEEDEHPQQR
LSSPLVPGNPFEEPTCINPFEMSDSGPEAE EPIEEELLLQQIDNIKAYIFDAKQCGR LDEVEVL TENLR
ELKHTLAKQGGTD

TRTRPLEQKLI SEEDLAANDILDYKDDDDKV

Chromatograms: https://cdn.origene.com/chromatograms/mk6560_b03.zip

Restriction Sites: Sgfl-Mlul

Cloning Scheme:


ACCN: NM_022340

ORF Size: 2354 bp

OTI Disclaimer: The molecular sequence of this clone aligns with the gene accession number as a point of reference only. However, individual transcript sequences of the same gene can differ through naturally occurring variations (e.g. polymorphisms), each with its own valid existence. This clone is substantially in agreement with the reference, but a complete review of all prevailing variants is recommended prior to use. [More info](#)

OTI Annotation: This clone was engineered to express the complete ORF with an expression tag. Expression varies depending on the nature of the gene.

Components: The ORF clone is ion-exchange column purified and shipped in a 2D barcoded Matrix tube containing 10ug of transfection-ready, dried plasmid DNA (reconstitute with 100 ul of water).

Reconstitution Method:

1. Centrifuge at 5,000xg for 5min.
2. Carefully open the tube and add 100ul of sterile water to dissolve the DNA.
3. Close the tube and incubate for 10 minutes at room temperature.
4. Briefly vortex the tube and then do a quick spin (less than 5000xg) to concentrate the liquid at the bottom.
5. Store the suspended plasmid at -20°C. The DNA is stable for at least one year from date of shipping when stored at -20°C.

RefSeq: [NM_022340.4](#)

RefSeq Size: 6678 bp

RefSeq ORF: 2355 bp

Locus ID: 64145

UniProt ID: [Q9H1K0](#)

Cytogenetics: 3p25.1

Domains: FYVE

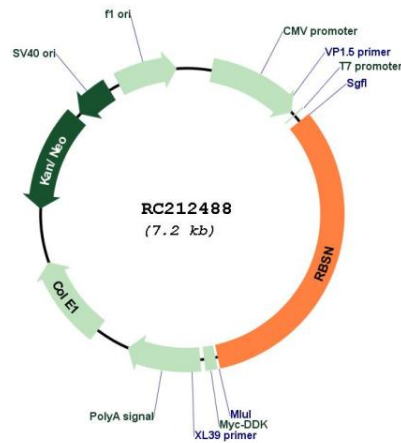
Protein Families: Transcription Factors

Protein Pathways: Endocytosis

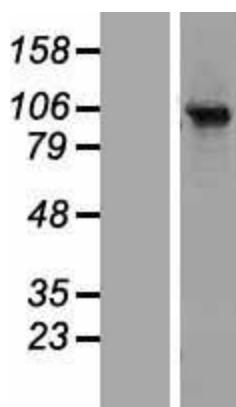
MW: 88.9 kDa

Gene Summary: This gene encodes a protein that belongs to the FYVE zinc finger family of proteins. The encoded protein interacts with Ras-related proteins that regulate membrane trafficking. A missense mutation in this gene is associated with a defect in the early endocytic pathway. Alternative splicing results in multiple transcript variants. [provided by RefSeq, Oct 2014]

Product images:



Circular map for RC212488



Western blot validation of overexpression lysate (Cat# [LY411711]) using anti-DDK antibody (Cat# [TA50011-100]). Left: Cell lysates from untransfected HEK293T cells; Right: Cell lysates from HEK293T cells transfected with RC212488 using transfection reagent MegaTran 2.0 (Cat# [TT210002]).