

## Product datasheet for RC212485

### CD21 (CR2) (NM\_001006658) Human Tagged ORF Clone

#### Product data:

Product Type:	Expression Plasmids
Product Name:	CD21 (CR2) (NM_001006658) Human Tagged ORF Clone
Tag:	Myc-DDK
Symbol:	CD21
Synonyms:	C3DR; CD21; CR; CVID7; SLEB9
Mammalian Cell Selection:	Neomycin
Vector:	pCMV6-Entry (PS100001)
E. coli Selection:	Kanamycin (25 ug/mL)
ORF Nucleotide Sequence:	>RC212485 representing NM_001006658 Red=Cloning site Blue=ORF Green=Tags(s)

TTTTGTAATACGACTCACTATAGGGCGGCCGGAATTCGTCGACTGGATCCGGTACCGAGGAGATCTGCC  
GCC**CGATCGCC**

ATGGGCGCCGGGCTGCTCGGGTTTTCTTGGCTCTCGTCGCACCGGGGTCCTCGGATTTCTGTG  
GCTCTCCTCCGCCTATCCTAAATGGCCGATTAGTTATTATTCTACCCCATTCGTTGGTACCGTGT  
AAGGTACAGTTGTTCAAGTACCTCCGCCTCATTGGAGAAAAAGTCTATTATGCATAACTAAAGACAAA  
GTGGATGGAACCTGGGATAAACCTGCTCCTAAATGTGAATATTTCAATAAATATTCTTCTGCCCTGAGC  
CCATAGTACCAGGAGGATACAAAATTAGAGGCTCTACCCCTACAGACATGGTGATTCTGTGACATTTGC  
CTGTAAAACCAACTTCTCCATGAACGGAAACAAGTCTGTTTGGTGTCAAGCAAATAATATGTGGGGCCG  
ACACGACTACCAACCTGTGTAAGTGTTCCTCTCGAGTGTCCAGCACTTCTATGATCCACAATGGAC  
ATCACACAAGTGAGAATGTTGGCTCCATTGCTCCAGGATTGTCTGTGACTTACAGCTGTGAATCTGGTTA  
CTTGCTTGTGGGAGAAAAGATCATTAACTGTTTGTCTTCGGGAAAATGGAGTGTGTCCCCCACCATGT  
GAAGAGGCACGCTGTAATCTCTAGGACGATTTCCCAATGGGAAGGTAAGGAGCCTCCAATTCTCCGGG  
TTGGTGAAGTCAAACCTTTTTCTGTGATGAAGGTATCGACTGCAAGGCCACCTTCTAGTCGGTGTGT  
AATTGCTGGACAGGGAGTTGCTTGGACAAAATGCCAGTATGTGAAGAAATTTTTGCCCATCACCTCCC  
CCTATTCTCAATGGAAGACATATAGGCACTCACTAGCAATGTCTCATATGGAAGCATAGTCACTTACA  
CTTGAGCCCGACCCAGAGGAAGGAGTGAACCTCATCCTTATTGGAGAGAGCACTCTCCGTTGTACAGT  
TGATAGTCAGAAGACTGGGACCTGGAGTGGCCCTGCCCCACGCTGTGAACCTTCTACTTCTGCGGTTGAG  
TGTCCACATCCCCAGATCCTAAGAGGCCGAATGGTATCTGGGCAGAAAGATCGATATACCTATAACGACA  
CTGTGATATTTGCTTGCATGTTTGGCTTACCTTGAAGGCAGCAAGCAAATCCGATGCAATGCCAAGG  
CACATGGGAGCCATCTGCACCAGTCTGTGAAAAGGAATGCCAGGCCCTCCTAACATCCTCAATGGGCAA  
AAGGAAGATAGACACATGGTCCGCTTTGACCCTGGAACATCTATAAAATATAGCTGTAACCTGGCTATG  
TGCTGGTGGGAGAAGAATCCATACAGTGTACCTCTGAGGGGTGTGGACACCCCTGTACCCCAATGCAA  
AGTGGCAGCGTGAAGCTACAGGAAGGCAACTTTGACAAAACCCAGCACCAATTTGTTAGACCAGAT



[View online >](#)

GTCAACTCTTCTTGTGGTGAAGGTACAAGTTAAGTGGGAGTGTTTATCAGGAGTGTCAAGGCACAATTC  
 CTTGGTTTATGGAGATTCGTCTTTGTAAGAAATCACCTGCCACCACCCCTGTATCTACAATGGGGC  
 ACACACCGGGAGTTCTTAGAAGATTTCCATATGGAACCACGGTCACTTACACATGTAACCCTGGGCCA  
 GAAAGAGGAGTGGAAATTCAGCCTCATTGGAGAGAGCACCATCCGTTGTACAAGCAATGATCAAGAAAAG  
 GCACCTGGAGTGGCCCTGCTCCCCTGTGTAACCTTTCCCTCCTTGCTGTCCAGTGTCCACATGTCCATAT  
 TGCAAAATGGATAACAAGATATCTGGCAAGGAAGCCCATATTTCTACAATGACACTGTGACACTCAAGTGT  
 TATAGTGGATTTACTTTGAAGGGCAGTAGTCAGATTCGTTGCAAAGCTGATAACACCTGGGATCCTGAAA  
 TACCAGTTTGTGAAAAGGCTGCCAGTCACTCCTGGGCTCCACCATGGTCGTACATACAGGTGAAAATAC  
 GGTCTTCTTTGTCTCTGGGATGACTGTAGACTACACTTGTGACCTTGGCTATTTGCTTGTGGAAAACAAA  
 TCCATTCACTGTATGCCTTCAGGAAATTGGAGTCTTCTGCCCCACGGTGTGAAGAAACATGCCAGCATG  
 TGAGACAGAGTCTTCAAGAACTCCAGCTGGTTCACGTGTGGAGCTAGTTAATACGTCCTGCCAAGATGG  
 GTACCAGTTGACTGGACATGCTTATCAGATGTGCAAGATGCTGAAAATGGAATTTGGTTCAAAAAGATT  
 CCACTTTGTAAAGTTATCACTGTACCCTCCACCAGTATTGCAATGGGAAGCACACAGGCATGATGG  
 CAGAAAACCTTCTATATGAAAATGAAGTCTTATGAATGTGACCAAGGATTCTATCTCCTGGGAGAGAA  
 AAAATTGCAGTGCAGAAGTGATTCTAAAGGACATGGATCTTGAGCGGGCCTTCCCACAGTGTACGA  
 TCTCCTCCTGTGACTCGCTGCCCTAATCCAGAAGTCAAACATGGGTACAAGCTCAATAAAACACATTCTG  
 CATATCCCAATGACATAGTGTATGTTGACTGCAATCCTGGCTTCATCATGAATGGTAGTCGCGTGAT  
 TAGGTGTCATACTGATAACACATGGGTGCCAGGTGTGCCAACTTGTATCAAAAAGCCTTCATAGGGTGT  
 CCACCTCCGCCTAAGACCCTAACGGGAACCATACTGGTGGAAACATAGCTCGATTTTCTCCTGGAATGT  
 CAATCCTGTACAGCTGTGACCAAGGCTACCTGTGGTGGGAGAGGCACCTCTTTTGCACACATGAGGG  
 AACCTGGAGCCAACCTGCCCTCATTGTAAGAGGTAAGTGTAGCTCACCAGCAGATATGGATGGAATC  
 CAGAAAAGGCTGGAACCAAGGAAAATGTATCAGTATGGAGCTGTGTAACCTGGAGTGTGAAGATGGGT  
 ATATGCTGGAAGGCAGTCCCAGAGCAGTCCCAATCGGATACCAATGGAACCCCTCCCAGCGGTTG  
 CAGATCCCGTTCACTTGTCTCTCTTGTGGTATTGCTGCAGGTTTGATACTTCTACCTTCTTGATT  
 GTCATTACCTTATACGTGATATCAAAACACAGAGCACGCAATTATTATACAGATAAAGCCAGAAAAGG  
 CTTTTCATTTAGAAGCACGAGAAGTATATTCTGTTGATCCATACAACCCAGCCAGC

**ACGCGT**ACGCGGCCGCTCGAGCAGAAACTCATCTCAGAAGAGGATCTGGCAGCAAATGATATCCTGGATT  
 ACAAGGATGACGACGATAAGGTTTAA

**Protein Sequence:**

>RC212485 representing NM\_001006658  
 Red=Cloning site Green=Tags(s)

MGAAGLLGVFLALVAPGVLGISCGSPPIILNGRISYYSTPIAVGTVIRYSCSGTFRLLIGEKSLLCITKDK  
 VDGTDWPKPAPKCEYFNKYSSCEPIVPGGYKIRGSTPYRHGDSVTFACKTNFSMNGNKSVMCQANMWWGP  
 TRLPTCVSVFPLECPALPMIHNGHHTSENVGSIAPGLSVTYSCESGYLLVGEKIINCLSSGKWSAVPPTC  
 EEARCKSLGRFPNGKVKPEPILRVGVTANFFCDEGYRLQPPSSRCVIAGQGVAVTKMPVCEEIFCPSP  
 P ILNGRHIGNSLANVSYGSIVTYTCDPDPEEGVNFILIGESTLRCTVDSQKTGTWSGPAPRCELSTSAVQ  
 CPHPQILRGRMVSGQKDRYTYNDTVIFACMFGFTLKGSKQIRCNAGTWEPSAPVCEKECQAPPNINLNGQ  
 KEDRHMVRFDPGTSIKYSCNPGYVLVGEEISQCTSEGVTWPPVPQCKVAACEATGRQLLTKPQHVFVRPD  
 VNSSCGEGYKLSGSVYQECQGTIPWFMEIRLCKEITCPPPPVIYNGAHTGSSLEDFPYGTTVYTCNPGP  
 ERGVEFSLIGESTIRCTSNDQERGTWSGPAPLCKLSLLAVQCSHVHIANGYKISGKEAPYFYNDTVTFKC  
 YSGFTLKGSSQIRCKADNTWDPEIPVCEKGCQSPPLHHRHTGGNTVFFVSGMTVDYTCDPGYLLVGNK  
 SIHCMPSGNWSPSAPRCEETCQHVRSQELPAGSRVELVNTSCQDGYQLTGHAQYMCQDAENGIWFKKI  
 PLCKVIHCHPPPVIYVNGKHTGMAENFLYNEVSYECDQGFYLLGEKQLQCRSDSKGHGWSGSPQCLR  
 SPPVTRCPNPEVKHGYKLNKTHSAYSHNDIVYDCNPGFIMNGSRVIRCHTDNTWVPGVPTCIKKAFIGC  
 PPPPKTPNGNHTGNIARFSPGMSILYSCDQGYLLVGEALLLCTHEGTWSQPAPHCKEVNCSPADMDGI  
 QKGLEPRKMYQYGAVVTLCEEDGYMLEGSPQSQSDHQWNPPLAVCRSRSLAPVLCGIAAGLILLTFLI  
 VITLYVISKHRARNYYTDTSQKEAFHLEAREVYSVDPYNPAS

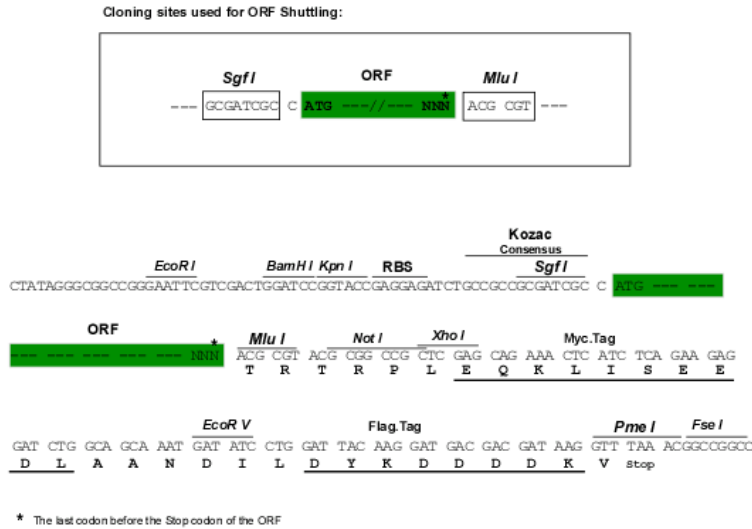
**TR**TRPLEQKLISEEDLAANDILDYKDDDDKV

**Chromatograms:**

[https://cdn.origene.com/chromatograms/ja3070\\_d04.zip](https://cdn.origene.com/chromatograms/ja3070_d04.zip)

**Restriction Sites:** SgfI-MluI

**Cloning Scheme:**



**ACCN:** NM\_001006658

**ORF Size:** 3276 bp

**OTI Disclaimer:** Due to the inherent nature of this plasmid, standard methods to replicate additional amounts of DNA in E. coli are highly likely to result in mutations and/or rearrangements. Therefore, OriGene does not guarantee the capability to replicate this plasmid DNA. Additional amounts of DNA can be purchased from OriGene with batch-specific, full-sequence verification at a reduced cost. Please contact our customer care team at [custsupport@origene.com](mailto:custsupport@origene.com) or by calling 301.340.3188 option 3 for pricing and delivery.

The molecular sequence of this clone aligns with the gene accession number as a point of reference only. However, individual transcript sequences of the same gene can differ through naturally occurring variations (e.g. polymorphisms), each with its own valid existence. This clone is substantially in agreement with the reference, but a complete review of all prevailing variants is recommended prior to use. [More info](#)

**OTI Annotation:** This clone was engineered to express the complete ORF with an expression tag. Expression varies depending on the nature of the gene.

**Components:** The ORF clone is ion-exchange column purified and shipped in a 2D barcoded Matrix tube containing 10ug of transfection-ready, dried plasmid DNA (reconstitute with 100 ul of water).

**Reconstitution Method:**

1. Centrifuge at 5,000xg for 5min.
2. Carefully open the tube and add 100ul of sterile water to dissolve the DNA.
3. Close the tube and incubate for 10 minutes at room temperature.
4. Briefly vortex the tube and then do a quick spin (less than 5000xg) to concentrate the liquid at the bottom.
5. Store the suspended plasmid at -20°C. The DNA is stable for at least one year from date of shipping when stored at -20°C.

**RefSeq:** [NM\\_001006658.3](#)

**RefSeq Size:** 4184 bp

**RefSeq ORF:** 3279 bp

**Locus ID:** 1380

**UniProt ID:** [P20023](#)

**Cytogenetics:** 1q32.2

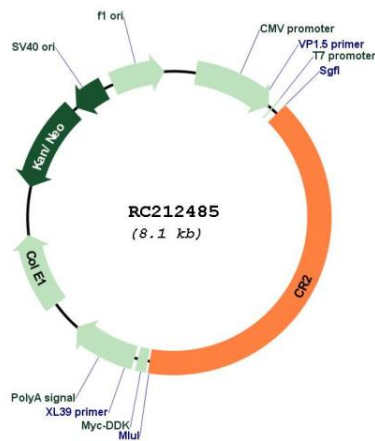
**Protein Families:** Druggable Genome, Transmembrane

**Protein Pathways:** B cell receptor signaling pathway, Complement and coagulation cascades, Hematopoietic cell lineage

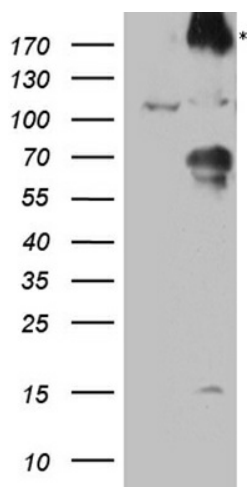
**MW:** 119.2 kDa

**Gene Summary:** This gene encodes a membrane protein, which functions as a receptor for Epstein-Barr virus (EBV) binding on B and T lymphocytes. Genetic variations in this gene are associated with susceptibility to systemic lupus erythematosus type 9 (SLEB9). Alternatively spliced transcript variants encoding different isoforms have been found for this gene.[provided by RefSeq, Sep 2009]

**Product images:**



Circular map for RC212485



HEK293T cells were transfected with the pCMV6-ENTRY control (Cat# [PS100001], Left lane) or pCMV6-ENTRY CR2 (Cat# RC212485, Right lane) cDNA for 48 hrs and lysed. Equivalent amounts of cell lysates (5 ug per lane) were separated by SDS-PAGE and immunoblotted with anti-CR2 rabbit polyclonal antibody (Cat# [TA890174]).