

Product datasheet for RC212482

MS4A7 (NM_206938) Human Tagged ORF Clone

Product data:

Product Type: Expression Plasmids
Product Name: MS4A7 (NM_206938) Human Tagged ORF Clone
Tag: Myc-DDK
Symbol: MS4A7
Synonyms: 4SPAN2; CD20L4; CFFM4; MS4A8
Mammalian Cell Selection: Neomycin
Vector: pCMV6-Entry (PS100001)
E. coli Selection: Kanamycin (25 ug/mL)
ORF Nucleotide Sequence: >RC212482 representing NM_206938
 Red=Cloning site Blue=ORF Green=Tags(s)

TTTTGTAATACGACTCACTATAGGGCGGCCGGAATTCGTCGACTGGATCCGGTACCGAGGAGATCTGCC
 GCCCGGATCGCC

ATGCTATTACAATCCCAAACCATGGGGTTTCTCACAGCTTTACACCAAAGGGCATCACTATCCCTCAA
 GAGAGAAACCTGGACACATGTACCAAACGAAGATTACCTGCAGAACGGGCTGCCAACAGAAACCACCGT
 TCTTGGGTTTGGCATTACTGGATCCCTCTCAATTATCTCTGAAAACAATCAACTAAGCCCTTTGACCTG
 AGCAGCTTGACCTCAAATGCAGTGAGTTCTGTTACTGCAGGAGCAGGCCCTTCTCCTCTGCTGACAGCA
 TGGTAGCCCTGAGGACTGCCTCTCAACATTGTGGCTCAGAAATGGATTATCTATCCTCATTGCCTTATTC
 GGAGTACTATTATCCAATATATGAAATCAAAGATTGTCTCCTGACCAGTGTCAAGTTAACAGGTGTCTTA
 GTGGTGATGCTCATCTTCACTGTGCTGGAGCTTATTAGCTGCATACAGTTCTGTCTTTTGGTGGAAAC
 AGCTCTACTCCAACAACCTGGGAGTTCAATTTCTCGACCCAGTCACAAGATCATATCCAACAGGTCAA
 AAAGAGTTCTTACGGTCTTGGATA

ACGCGTACGCGGCCGCTCGAGCAGAACTCATCTCAGAAGAGGATCTGGCAGCAAATGATATCCTGGATT
 ACAAGGATGACGACGATAAGGTTTAA

Protein Sequence: >RC212482 representing NM_206938
 Red=Cloning site Green=Tags(s)

MLLQSQTMGVSHSFTPKGITIPQREKPGHMYQNEYDLQNLPTETTTLVGFGITGSLSIISGKQSTKPFDL
 SSLTSSNAVSSVTAGLFLADSMVALRTASQHCSEMDYLSLPPYSEYYPIYEIKDCLLTSVSLTGVL
 VMLIFTVLELLLAAYSSVFWKQLYSNPGSSFSSSTQSQDHIQQVKKSSRSWI

TRTRPLEQKLISEEDLAANDILDYKDDDDKV



[View online »](#)

Chromatograms: https://cdn.origene.com/chromatograms/ja1454_e06.zip

Restriction Sites: SgfI-MluI

Cloning Scheme:



ACCN: NM_206938

ORF Size: 585 bp

OTI Disclaimer: The molecular sequence of this clone aligns with the gene accession number as a point of reference only. However, individual transcript sequences of the same gene can differ through naturally occurring variations (e.g. polymorphisms), each with its own valid existence. This clone is substantially in agreement with the reference, but a complete review of all prevailing variants is recommended prior to use. [More info](#)

OTI Annotation: This clone was engineered to express the complete ORF with an expression tag. Expression varies depending on the nature of the gene.

Components: The ORF clone is ion-exchange column purified and shipped in a 2D barcoded Matrix tube containing 10ug of transfection-ready, dried plasmid DNA (reconstitute with 100 ul of water).

Reconstitution Method:

1. Centrifuge at 5,000xg for 5min.
2. Carefully open the tube and add 100ul of sterile water to dissolve the DNA.
3. Close the tube and incubate for 10 minutes at room temperature.
4. Briefly vortex the tube and then do a quick spin (less than 5000xg) to concentrate the liquid at the bottom.
5. Store the suspended plasmid at -20°C. The DNA is stable for at least one year from date of shipping when stored at -20°C.

RefSeq: [NM_206938.1](#), [NP_996821.1](#)

RefSeq Size: 2889 bp

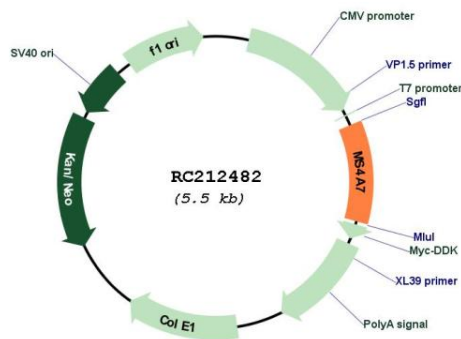
RefSeq ORF: 588 bp

Locus ID: 58475

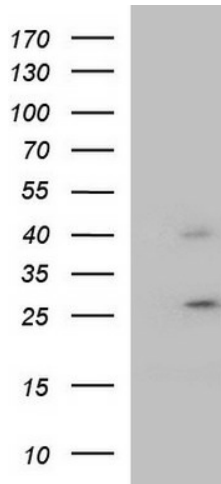
UniProt ID: [Q9GZW8](#)
Cytogenetics: 11q12.2
Protein Families: Druggable Genome, Transmembrane
MW: 21.2 kDa

Gene Summary: This gene encodes a member of the membrane-spanning 4A gene family, members of which are characterized by common structural features and similar intron/exon splice boundaries and display unique expression patterns in hematopoietic cells and nonlymphoid tissues. This family member is associated with mature cellular function in the monocytic lineage, and it may be a component of a receptor complex involved in signal transduction. This gene is localized to 11q12, in a cluster of other family members. At least four alternatively spliced transcript variants encoding two distinct isoforms have been observed. [provided by RefSeq, Jul 2008]

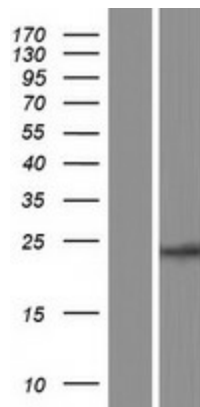
Product images:



Circular map for RC212482



HEK293T cells were transfected with the pCMV6-ENTRY control (Cat# [PS100001], Left lane) or pCMV6-ENTRY MS4A7 (Cat# RC212482, Right lane) cDNA for 48 hrs and lysed. Equivalent amounts of cell lysates (5 ug per lane) were separated by SDS-PAGE and immunoblotted with anti-MS4A7(Cat# [TA590327]). Positive lysates [LY404181] (100ug) and [LC404181] (20ug) can be purchased separately from OriGene.



Western blot validation of overexpression lysate (Cat# [LY404181]) using anti-DDK antibody (Cat# [TA50011-100]). Left: Cell lysates from untransfected HEK293T cells; Right: Cell lysates from HEK293T cells transfected with RC212482 using transfection reagent MegaTran 2.0 (Cat# [TT210002]).