

Product datasheet for **RC212480**

SERINC3 (NM_006811) Human Tagged ORF Clone

Product data:

Product Type:	Expression Plasmids
Product Name:	SERINC3 (NM_006811) Human Tagged ORF Clone
Tag:	Myc-DDK
Symbol:	SERINC3
Synonyms:	AIGP1; DIFF33; SBBI99; TDE; TDE1; TMS-1
Mammalian Cell Selection:	Neomycin
Vector:	pCMV6-Entry (PS100001)
E. coli Selection:	Kanamycin (25 ug/mL)



[View online »](#)

ORF Nucleotide Sequence:

>RC212480 representing NM_006811
 Red=Cloning site Blue=ORF Green=Tags(s)

TTTTGTAATACGACTCACTATAGGGCGGCCGGAATTCGTCGACTGGATCCGGTACCGAGGAGATCTGCC
 GCC**CGCATCGCC**

ATGGGGGCTGTGCTGGGTGTCTTCTCCCTCGCCAGCTGGTTCCATGCCTCTGCAGCGGTGCCTCATGTT
 TGCTGTGTAGTTGCTGTCTTAACAGTAAGAATTCACGGTGA CTGCCTATTTATGCTTTCATTCTCT
 CCTGAGCACTGTCGTATCCTATATCATGCAGAGAAAAGAGATGAAAACCTACTTGAAGAAGATTCCTGGA
 TTTTGTGAAGGGGATTTAAAATCCATGAGGCTGATATAAATGCAGATAAAGATTGTGATGTGCTGGTTG
 GTTATAAAGCTGTGTATCGGATCAGCTTGGCCATGGCCATCTTTTCTTTGTCTTTCTCTGCTCATGTT
 CAAAGTAAAAACAAGTAAAGATCTCCGAGCGGCAGTACACAATGGGTTTTGGTCTTCAAATTTGCTGCC
 CTTATTGGAATCATGGTTGGCTCTTCTACATCCCTGGGGCTATTTAGCTCAGCTGGTTTGTGTTG
 GCATGATAGGGGCGCCCTTTCATCCTCATTAGCTGGTGTGCTGGTAGATTTTGTCTATTCTTGAA
 TGATCATGGGTAATCGAATGGAAGAAGGAAACCAAGTTGTGGTATGCTGCTTACTGTCTTTCACA
 AGCGCCTTTTATATCCTGTCAATCATCTGTGTCGGGCTGCTCTATACATATTACACCAAACAGATGGCT
 GCACAGAAAACAAGTTCTTCATCAGTATTAACCTGATCCTTTGCGTTGTGGCTTCTATTATATCGATCCA
 CCCAAAAATTCAGGAACACCAGCCTCGCTCCGGCCTTTGCACTCCTCCCTCATCACCCTTACACTATG
 TACCTCACCTGGTCAGCCATGTCCAATGAACCTGATCGTTCCTGCAATCCCAACCTGATGAGCTTTATTA
 CACGCATAACTGCACCAACCCTGGCTCCTGGAAATCAACTGCTGTGGTCCCTACCCCTACTCCACCATC
 AAAGAGTGGGTCTTACTGGATTAGATAATTTTATTGGACTGTTTGTCTTTGTCTCTGCTCTTGTAT
 TCTAGCATCCGCACTTCCACTAATAGCCAAGTAGACAAGCTGACCCTGTGAGGAGTGACAGCGTCATCC
 TTGGTGATACAACCTACCAGTGGTGCCAGTGAAGAAGATGGACAGCCTCGGCGGCTGTGGACAACGA
 GAAAGAGGGAGTGCAAGTATAGTACTCCTTATTCCACCTCATGCTCTGCTTGGCTTCTTGTACATCATG
 ATGACCCTGACCAGCTGGTACAGCCCTGATGCAAAGTTTACAGAGCATGACCAGCAAGTGGCCAGCTGTG
 GGGTCAAGATCAGCTCCAGCTGGTCTGCTCCTGCTTACGCTCTGGACCCTTGTGGCTCCACTTGTCTCT
 CACCAGTCGGGACTTCAGC

ACGCGTACGCGGCCGCTCGAGCAGAAACTCATCTCAGAAGAGGATCTGGCAGCAAATGATATCCTGGATT
 ACAAGGATGACGACGATAAGGTTTAA

Protein Sequence:

>RC212480 representing NM_006811
 Red=Cloning site Green=Tags(s)

MGAVLGVFSLASWVPCLSGASCLLCSPPNSKNSTVTRLIYAFILLSTVVSYIMQRKEMETYLKKIPG
 FCEGGFKIHEADINADKCDVLVGYKAVYRISFAMAIFFVFLMLFKVKTSKDLRAAVHNGFWFFKIAA
 LIGIMVGSFYIPGGYFSSVWFVGMIGAALFILIQLVLLVDFAHSWNESWVNRMEEGNPRWLWYAALLSFT
 SAFYILSICVGLLYTYTYTKPDGCTENKFFISINLILCVVASIISIHPKIQEHQPRSGLLQSSLITLYTM
 YLTWSAMSNEPDRSCNPNLMSFITRITAPTLAPGNSTAVVPTPTPPSKSGSLDSDNFIGLFVFLCLLY
 SSIRTSTNSQVDKLTLSGSDSVILGDTTSGASDEEDGQPRRAVDNEKEGVQYSYSLFHLMLCLASLYIM
 MTLTSWYSPDAKFQSMTSKWPVAVVWKISSWVCLLLYVWTLVAPLVLTSTRDFS

TRTRPLEQKLISEEDLAANDILDYKDDDDKV

Chromatograms:

https://cdn.origene.com/chromatograms/mk6167_f10.zip

Restriction Sites:

Sgfl-Mlul

Cloning Scheme:

Cloning sites used for ORF Shutting:



* The last codon before the Stop codon of the ORF

ACCN: NM_006811

ORF Size: 1419 bp

OTI Disclaimer: The molecular sequence of this clone aligns with the gene accession number as a point of reference only. However, individual transcript sequences of the same gene can differ through naturally occurring variations (e.g. polymorphisms), each with its own valid existence. This clone is substantially in agreement with the reference, but a complete review of all prevailing variants is recommended prior to use. [More info](#)

OTI Annotation: This clone was engineered to express the complete ORF with an expression tag. Expression varies depending on the nature of the gene.

Components: The ORF clone is ion-exchange column purified and shipped in a 2D barcoded Matrix tube containing 10ug of transfection-ready, dried plasmid DNA (reconstitute with 100 ul of water).

Reconstitution Method:

1. Centrifuge at 5,000xg for 5min.
2. Carefully open the tube and add 100ul of sterile water to dissolve the DNA.
3. Close the tube and incubate for 10 minutes at room temperature.
4. Briefly vortex the tube and then do a quick spin (less than 5000xg) to concentrate the liquid at the bottom.
5. Store the suspended plasmid at -20°C. The DNA is stable for at least one year from date of shipping when stored at -20°C.

RefSeq: [NM_006811.4](#)
RefSeq Size: 2592 bp

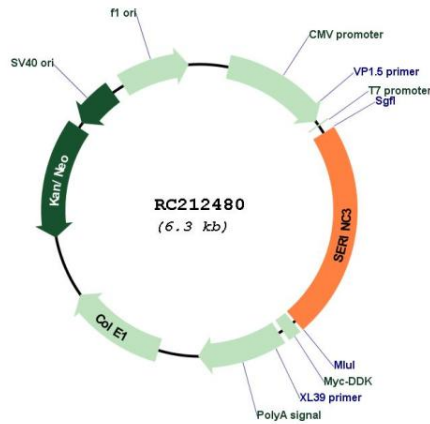
RefSeq ORF: 1422 bp

Locus ID: 10955

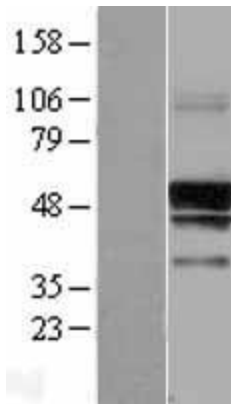
UniProt ID: [Q13530](#)
Cytogenetics: 20q13.12

Domains: TMS_TDE
Protein Families: Transmembrane
MW: 52.4 kDa
Gene Summary: Restriction factor required to restrict infectivity of lentiviruses, such as HIV-1: acts by inhibiting an early step of viral infection. Impairs the penetration of the viral particle into the cytoplasm (PubMed:26416733, PubMed:26416734).[UniProtKB/Swiss-Prot Function]

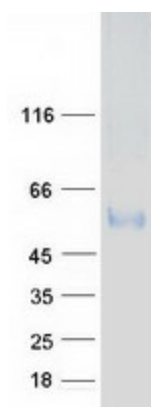
Product images:



Circular map for RC212480



Western blot validation of overexpression lysate (Cat# [LY402036]) using anti-DDK antibody (Cat# [TA50011-100]). Left: Cell lysates from untransfected HEK293T cells; Right: Cell lysates from HEK293T cells transfected with RC212480 using transfection reagent MegaTran 2.0 (Cat# [TT210002]).



Coomassie blue staining of purified SERINC3 protein (Cat# [TP312480]). The protein was produced from HEK293T cells transfected with SERINC3 cDNA clone (Cat# RC212480) using MegaTran 2.0 (Cat# [TT210002]).