

## Product datasheet for RC212475

### Amino terminal enhancer of split (AES) (NM\_001130) Human Tagged ORF Clone

#### Product data:

**Product Type:** Expression Plasmids  
**Product Name:** Amino terminal enhancer of split (AES) (NM\_001130) Human Tagged ORF Clone  
**Tag:** Myc-DDK  
**Symbol:** Amino terminal enhancer of split  
**Synonyms:** AES; AES-1; AES-2; ESP1; GRG; Grg-5; GRG5  
**Mammalian Cell Selection:** Neomycin  
**Vector:** pCMV6-Entry (PS100001)  
**E. coli Selection:** Kanamycin (25 ug/mL)  
**ORF Nucleotide Sequence:** >RC212475 representing NM\_001130  
 Red=Cloning site Blue=ORF Green=Tags(s)

TTTTGTAATACGACTCACTATAGGGCGCCGGGAATTCGTCGACTGGATCCGGTACCGAGGAGATCTGCC  
 GCC**CGATCGCC**

ATGATGTTTCCACAAAGCAGGCATTTCGGGCTCCTCGCACCTACCCAGCAACTCAAATTCACCACCTCGG  
 ACTCCTGCGACCGCATCAAAGACGAATTCAGCTACTGCAAGCTCAGTACCACAGCCTCAAGCTCGAATG  
 TGACAAGTTGGCCAGTGAGAAGTCAGAGATGCAGCGTCACTATGTGATGTACTACGAGATGTCCTACGGC  
 TTGAACATCGAGATGCACAAACAGGCTGAGATCGTCAAAGGCTGAACGGGATTTGTGCCAGGTCTCTGC  
 CCTACCTCTCCAAGAGCACCAGCAGCAGTCTTGGGAGCCATTGAGAGGGCCAAGCAGGTCACCGCTCC  
 CGAGCTGAACTCTATCATCCGACAGCAGCTCCAAGCCCACAGCTGTCCCAGCTGCAGGCCCTGGCCCTG  
 CCCTTGACCCCACTACCCGTGGGGCTGCAGCCGCTTCGCTGCCGGCGGTGAGCGCAGGCACCGGCTCC  
 TCTCGCTGTCGCGCTGGGTTCCAGGCCACCTCTCAAAGGAAGACAAGAACGGGCACGATGGTGACAC  
 CCACCAGGAGGATGATGGCGAGAAGTCGGAT

**ACGCGT**ACGCGGCCGCTCGAGCAGAACTCATCTCAGAAGAGGATCTGGCAGCAATGATATCCTGGATT  
 ACAAGGATGACGACGATAAGGTTTAA

**Protein Sequence:** >RC212475 representing NM\_001130  
 Red=Cloning site Green=Tags(s)

MMFPQSRHSGSSHLPPQLKFTTSDSCDRIKDEFQLLQAQYHSLKLECDKLASEKSEMQRHYVMYEMSYG  
 LNIEMHKQAEIVKRLNGICAQVLPYLSQEHQQQVLGAIERAKQVTAPELNSIIRQQLQAHQLSQLALAL  
 PLTPLPVGLQPPSLPAVSAGTGLLSLALGSQAHL SKEDKNGHDGDTHQEDDGEKSD

**TRTRPLEQKLI**SEEDLAANDILDYKDDDDKV

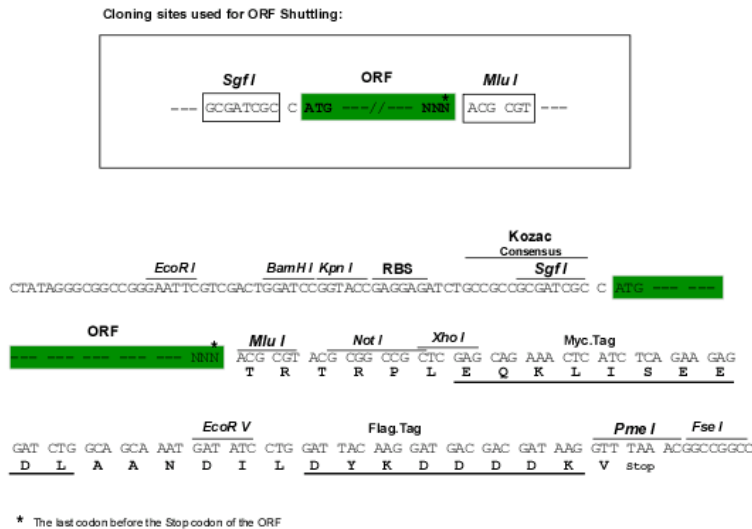


[View online »](#)

**Chromatograms:** [https://cdn.origene.com/chromatograms/mk6484\\_c09.zip](https://cdn.origene.com/chromatograms/mk6484_c09.zip)

**Restriction Sites:** SgfI-MluI

**Cloning Scheme:**



**ACCN:** NM\_001130

**ORF Size:** 591 bp

**OTI Disclaimer:** The molecular sequence of this clone aligns with the gene accession number as a point of reference only. However, individual transcript sequences of the same gene can differ through naturally occurring variations (e.g. polymorphisms), each with its own valid existence. This clone is substantially in agreement with the reference, but a complete review of all prevailing variants is recommended prior to use. [More info](#)

**OTI Annotation:** This clone was engineered to express the complete ORF with an expression tag. Expression varies depending on the nature of the gene.

**Components:** The ORF clone is ion-exchange column purified and shipped in a 2D barcoded Matrix tube containing 10ug of transfection-ready, dried plasmid DNA (reconstitute with 100 ul of water).

**Reconstitution Method:**

1. Centrifuge at 5,000xg for 5min.
2. Carefully open the tube and add 100ul of sterile water to dissolve the DNA.
3. Close the tube and incubate for 10 minutes at room temperature.
4. Briefly vortex the tube and then do a quick spin (less than 5000xg) to concentrate the liquid at the bottom.
5. Store the suspended plasmid at -20°C. The DNA is stable for at least one year from date of shipping when stored at -20°C.

**RefSeq:** [NM\\_001130.6](#)

**RefSeq Size:** 1687 bp

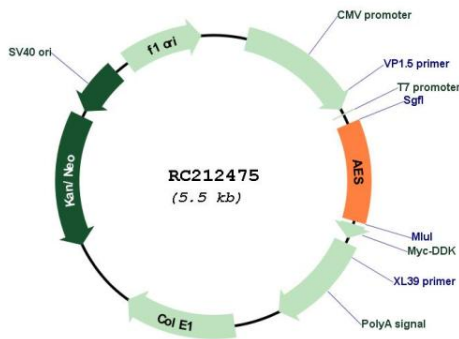
**RefSeq ORF:** 594 bp

**Locus ID:** 166

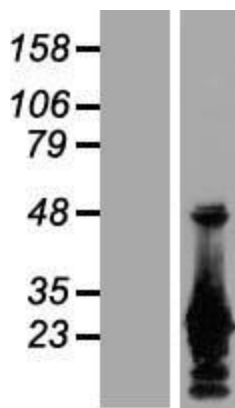
UniProt ID: [Q08117](#)  
 Cytogenetics: 19p13.3  
 Domains: TLE\_N  
 Protein Families: Druggable Genome, Transcription Factors  
 MW: 21.8 kDa

**Gene Summary:** The protein encoded by this gene is similar in sequence to the amino terminus of *Drosophila* enhancer of split groucho, a protein involved in neurogenesis during embryonic development. The encoded protein, which belongs to the groucho/TLE family of proteins, can function as a homooligomer or as a heterooligomer with other family members to dominantly repress the expression of other family member genes. Three transcript variants encoding different isoforms have been found for this gene. [provided by RefSeq, Jul 2008]

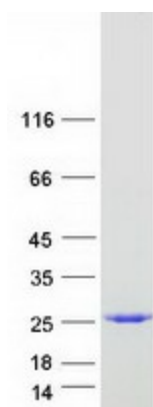
**Product images:**



Circular map for RC212475



Western blot validation of overexpression lysate (Cat# [LY420115]) using anti-DDK antibody (Cat# [TA50011-100]). Left: Cell lysates from untransfected HEK293T cells; Right: Cell lysates from HEK293T cells transfected with RC212475 using transfection reagent MegaTran 2.0 (Cat# [TT210002]).



Coomassie blue staining of purified TLE5 protein (Cat# [TP312475]). The protein was produced from HEK293T cells transfected with TLE5 cDNA clone (Cat# RC212475) using MegaTran 2.0 (Cat# [TT210002]).