

## Product datasheet for **RC212470**

### **ANKRD56 (SOWAHB) (NM\_001029870) Human Tagged ORF Clone**

#### **Product data:**

Product Type:	Expression Plasmids
Product Name:	ANKRD56 (SOWAHB) (NM_001029870) Human Tagged ORF Clone
Tag:	Myc-DDK
Symbol:	ANKRD56
Synonyms:	ANKRD56
Mammalian Cell Selection:	Neomycin
Vector:	pCMV6-Entry (PS100001)
E. coli Selection:	Kanamycin (25 ug/mL)



[View online »](#)

**ORF Nucleotide Sequence:**

>RC212470 representing NM\_001029870  
 Red=Cloning site Blue=ORF Green=Tags(s)

TTTTGTAATACGACTCACTATAGGGCGGCCGGGAATTCGTCGACTGGATCCGGTACCGAGGAGATCTGCC  
 GCC**GCGATCGCC**

ATGGCCCCGAGAGCTGAGCCAGGAGGCACTACTGGACTTTCTGTGCCAGGCTGGGGCCCGCTGACCAACG  
 CTGCCTTGCTGAGCCACTTCAAGAGCTTTCTCCGAGACCCCGACGCTCCCCAGCCAGCACCAGCACCG  
 CCGCGAGCTCTTCAAGGGCTTCTCAACTCGGTGCGCCGAGTGCGCCAGGACCCCGACGGACCAAGTAC  
 GTGGTGCTCAAGAGGAGATACAGGGACCTTTGGGGGAGGAGGGGCTGCAGCGACCCCGAGCCGCCCG  
 CGGCCGCCCCAGTGCAGGGGAGCTGCGCCCTGCTCCCCGAGGGCGCGCGGGGGGAGCCGCCCA  
 GCAGCAGCCAGGCGGGCGGCGGAGAAGGAGCCGAGGAGGAGCCAGCAGGTGCAGCAGCCAGAGCC  
 GCCGACGAGCTTGAATGGACTCCCGGCGAGGACTCCCGTAGGGCGCCGGAAAGGGCGGGATCGA  
 AGGGCAGTCCCGACAGAGGCCCGGTGCCCGAGCTGCAGCGCAGGGGCCAGGCGAGAGCGAGCTG  
 CGCGGCGCGAAGACGCAGGGCCGCTGCTGCTGGGAATGCCTCCAGAACAACCTGGCTGTACTGCCGGGA  
 GAGCTCGGCGCACTCCCGCACTCGGCCACCGGAGGAGAAGCCGGCACGGGCTGCTGCCAGGATG  
 ACCGCGGGGCTTCCAGGGAGCGGGAAGAAGCGCGCTAGCTGAGCCGGCGCTGTGCCTGCAGTGGCTCA  
 CTCGCCTCCCGCCACCGTGCAGGCTGCGACAAGCAGGGCTTCCCGCCTGCTCTCCTGCCGGCCCCGCT  
 CCCCAGGAGACCGCGGAGCTGCTGACCCCCAGCTCCCTGCATTATTCGACCTGCAGCAGCAGCAGC  
 AGCGCACTCGAGAGTGGTGGCCAGGCACCCGAGGTGCCGAGGCCCGTGATCAGGGCCATCCCGCGC  
 CTGGTCCGTGCTGCCAGACAATCTCCAGCTGCCCTTGAACCCGGCTCCACGGAGCCTAATTCAGAG  
 CCGCCAGACCCCTGTCTTCTCGCACTCTCTTTCTGTTGTTCCGGATGAGTCTGGGAATCCTGGG  
 TGTGGACCAGGAGAGTGTGAGTGGCAGTGGAGAGCAGCAGTGGGCCAAAGACTCCCGGGGGCTTCTGAA  
 GAGGGGCTGCAGTGTCTTGGGAACCCAGATAGGGGGAAGCTCAGGAATCCAGCTGGGGGCTTCTG  
 TATCTCGAAGGAGGGCAGCCCCAGCCGAGCCCTCAGGGTCTCAGAAACAGAGGGGATGGTCACATCTC  
 TCAGCAGTCCCTGCAGGGGCTAATGGCCTTGCAGGCCACCCCTGAAGCCTTTCCTTGGCCAGTTCCT  
 AAGTTAAGGAGTCCCTCAGGAGGAGCTCTTGGCAGGGAGAGCCAAATGTCTCCTCTGATGAGGAGT  
 ACCTCGATGAGGGCTTGTGAAAAGAAGTCGGCGCCACCTCGATCCAGGAAGCCCTCAAGGCAGGAAC  
 GGCACCCAGCCAAAGGTTGATGCAGGTTTACTACTAAAATTCAGAGGTTAAGGCTGTTGTGGCCGAG  
 CGGGTGGCGACACAGCCTGTGGTCCCAGTGGGAGGGGCTGCAGCCTTGCCCCACAGAATTC  
 CTGAGCACAAATCATCCCTGGTTCCTAGATGCCAGGGAGCATGAGTGGATTGTGAAGCTTGCAGTGG  
 CTCTGGATTGAGTGTGGACTTTGTTCTGGGAGGACCCTCAACTGGCCTTGCACAAAGACTTTTTGACT  
 GGGTACTGCGTTGCACTGGATAGCCAAACATGGTGACCTCAGGGCCCTCAGGACTTGGTGTCTGGAG  
 CAAAGAAGGCAGGGATTGCTTGTATGTAACGTGAGGTCCAGTTGTGGATATACCCCGTGCACCTTGC  
 AGCCATTCACGGCCACCAGGGGTATCAAATTCAGTGTGAAAGGTTGGCTTCTCGGGTAAATGTCAGG  
 GACAGCAGTGGGAAGAAGCCATGGCAGTATCTAACCAGTAATACCTTGGGGAAATATGGCAGCTGTTGG  
 GAGCTCCTCGGGCAAGCCATTTCCCTGTCTATCCCTAGTTGGAAGTCTTCCCTACCAGAAAGGC  
 CAAGAGCAAGGAAATATCTAGAAGTGTACCCGAAAAACTTCCTTCGCTGCACTACTCAAAGTCAGCAC  
 AACAAGTGGAAACTGGCCAACAGTATGAGAAATTCACAGTCCAAGGAAAGAGAAGAGTATAGTGAC

**AGCGGACCG**ACGCGTACGCGGCCGCTCGAGCAGAACTCATCTCAGAAGAGGATCTGGCAGCAAATGATATCC  
 TGGATTACAAGGATGACGACGATAAGGTTTAA

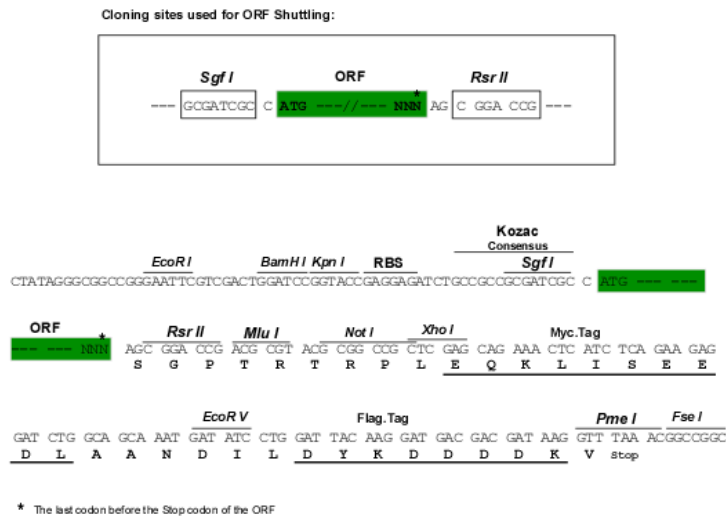
**Protein Sequence:** >RC212470 representing NM\_001029870  
 Red=Cloning site Green=Tags(s)

MARELSQEALLDFLCQAGGRVTNAALLSHFKSFLRDPDASPSQHQHRELFKGFVNSVAAVRQDPDGTKY  
 VVLKRRYRDLLGEEGLQRPREPPAAAPSAGGAAPCSPRGARRGEPQQPRRRRREKEPEEEEPAGAAARA  
 ADAACNGLPGSDSRRAPGKGGGSKGSPGQRPVPAAGAAQAQARASCAAATQGRCCWECLQNNLAVLPG  
 ELGALPHSATAEEKPARALPAQDDRGASREREEGALAEPAPVPAVAHSPATVEAATSRAASPPALLPGPA  
 PRGDRPELLTPSSLHYSTLQQQQRTREWARHPQVPEARQQGPIRAWSVLPDNFLQLPLEPGSTEPNSE  
 PPDPCLSHSLFPVVPDESWEWAGNPSLTVFRSIRCQLSLQDLDDFVDQESDGSEESSSGPKDSPGASE  
 EGLQVVLGTPDRGKLRNPAGGLSVSRKEGSPSRSPQGLRNRGDGHSQQVPAGANGLAGHPLKPLPWPVP  
 KLRRSLRRSSLAGRAKLSSDDEEYLDEGLLKRRRPPRSRKPSKAGTAPSPRVDAGLSLKLAEVKAVVAE  
 RGWRHSLWVPSGEGSAALAPHRTSEHKSSLVPLDAREHEWIVKLASGWIQVWTLFWEDPQLALHKDFLT  
 GYTALHWIAKHGDLRALQDLVSGAKKAGIVLDVNRSSCGYTPLHLAAIHGHQGVIKLLVQRLASRVNVR  
 DSSGKKPWQYLTNTSGEIWQLLGAPRGKPIFPVYPLVGSSSPTRKAKSKEISRSVTRKTSFAALLKSQH  
 NKWKLANQYEFHSPREREYS

SGPTRTRRLEQKLISEEDLAANDILDYKDDDDKV

**Chromatograms:** [https://cdn.origene.com/chromatograms/mk8023\\_d04.zip](https://cdn.origene.com/chromatograms/mk8023_d04.zip)

**Restriction Sites:** Sgfl-RsrII

**Cloning Scheme:**


**ACCN:** NM\_001029870

**ORF Size:** 2379 bp

**OTI Disclaimer:** The molecular sequence of this clone aligns with the gene accession number as a point of reference only. However, individual transcript sequences of the same gene can differ through naturally occurring variations (e.g. polymorphisms), each with its own valid existence. This clone is substantially in agreement with the reference, but a complete review of all prevailing variants is recommended prior to use. [More info](#)

**OTI Annotation:** This clone was engineered to express the complete ORF with an expression tag. Expression varies depending on the nature of the gene.

**Components:** The ORF clone is ion-exchange column purified and shipped in a 2D barcoded Matrix tube containing 10ug of transfection-ready, dried plasmid DNA (reconstitute with 100 ul of water).

**Reconstitution Method:**

1. Centrifuge at 5,000xg for 5min.
2. Carefully open the tube and add 100ul of sterile water to dissolve the DNA.
3. Close the tube and incubate for 10 minutes at room temperature.
4. Briefly vortex the tube and then do a quick spin (less than 5000xg) to concentrate the liquid at the bottom.
5. Store the suspended plasmid at -20°C. The DNA is stable for at least one year from date of shipping when stored at -20°C.

**RefSeq:** [NM\\_001029870.3](#)

**RefSeq Size:** 2921 bp

**RefSeq ORF:** 2382 bp

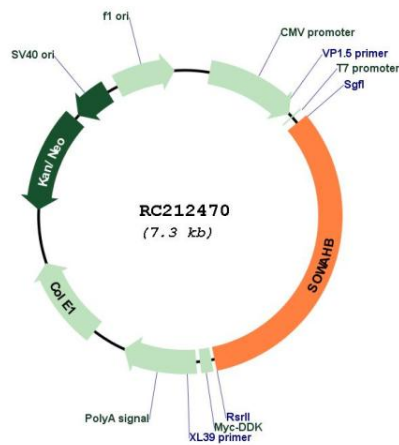
**Locus ID:** 345079

**UniProt ID:** [A6NEL2](#)

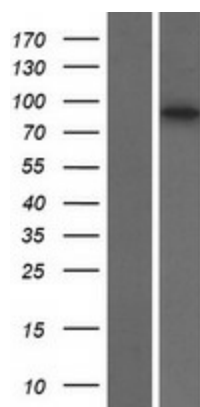
**Cytogenetics:** 4q21.1

**MW:** 85.6 kDa

**Product images:**



Circular map for RC212470



Western blot validation of overexpression lysate (Cat# [LY422254]) using anti-DDK antibody (Cat# [TA50011-100]). Left: Cell lysates from untransfected HEK293T cells; Right: Cell lysates from HEK293T cells transfected with RC212470 using transfection reagent MegaTran 2.0 (Cat# [TT210002]).