

Product datasheet for **RC212467**

RGS8 (NM_001102450) Human Tagged ORF Clone

Product data:

Product Type: Expression Plasmids
Product Name: RGS8 (NM_001102450) Human Tagged ORF Clone
Tag: Myc-DDK
Symbol: RGS8
Mammalian Cell Selection: Neomycin
Vector: pCMV6-Entry (PS100001)
E. coli Selection: Kanamycin (25 ug/mL)
ORF Nucleotide Sequence: >RC212467 representing NM_001102450
Red=Cloning site Blue=ORF Green=Tags(s)

TTTTGTAATACGACTCACTATAGGGCGGCCGGAATTCGTCGACTGGATCCGGTACCGAGGAGATCTGCC
GCC**CGATCGCC**

ATGGCGGCCTTACTGATGCCACGCAGGAACAAAGGGATGAGGACTCGACTGGGATGCCTGTCTCACAAGT
CAGACTCGTGTAGTGATTTACAGCTATTCTTCCAGACAAACCAACCGCGTCTCAAGAGATTATCGAC
AGAAGAAGCTACGAGGTGGGCAGATTCCCTTGTGTGCTTCTCTCATAAGTATGGGGTGGCTGCATTC
CGTGCCCTCTTGAAGACGGAGTTCACTGAGGAGAACCTGGAATTCGGTTGGCCTGTGAGGAGTTCAAGA
AGACCAGGTCAACTGCAAACTGGTCTCTAAGGCCCATAGGATCTTTGAGGAGTTGTGGATGTGCAGGC
TCCACGGGAGGTAACATTGACTTCCAGACCCGAGAAGCCAGAGGAAGAAGCTGCAGGAGCCATCCTG
ACTTGCTTTGACCAAGCCCAAGGAAAAGTACACAGCCTCATGGAGAAAGACTCTTACCCAGGTTCTCTGA
GGTCCAAATGTACTTAGATCTGCTGTCCCAAAGCCAGAGGAGGCTCAGT

ACGCGTACGCGGCCGCTCGAGCAGAACTCATCTCAGAAGAGGATCTGGCAGCAAATGATATCCTGGATT
ACAAGGATGACGACGATAAGGTTTAA

Protein Sequence: >RC212467 representing NM_001102450
Red=Cloning site Green=Tags(s)

MAALLMPRRNKGMRTLGLSHKSDSCSDFTAILPDKPNRALKRLSTEEATRWADSFVLLSHKYGVAAP
RAFLKTEFSEENLEFWLACEEFKKTRSTAKLVSKAHRIFEEFVDVQAPREVNIDFQTREATRKNLQEPSL
TCFDQAQGVHSLMEKDSYPRFLRSKMYLDLLSQSQRRLS

TRTRPLEQKLISEEDLAANDILDYKDDDDKV

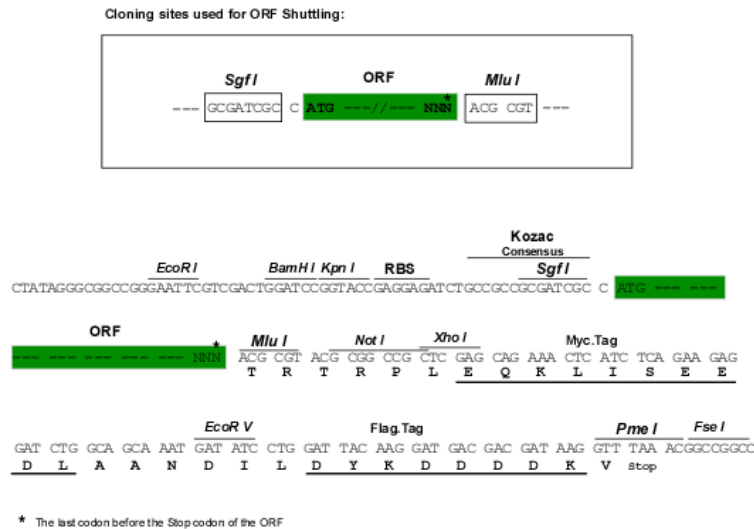
Chromatograms: https://cdn.origene.com/chromatograms/ja1458_f04.zip

Restriction Sites: SgfI-MluI



[View online »](#)

Cloning Scheme:



ACCN: NM_001102450

ORF Size: 540 bp

OTI Disclaimer: The molecular sequence of this clone aligns with the gene accession number as a point of reference only. However, individual transcript sequences of the same gene can differ through naturally occurring variations (e.g. polymorphisms), each with its own valid existence. This clone is substantially in agreement with the reference, but a complete review of all prevailing variants is recommended prior to use. [More info](#)

OTI Annotation: This clone was engineered to express the complete ORF with an expression tag. Expression varies depending on the nature of the gene.

Components: The ORF clone is ion-exchange column purified and shipped in a 2D barcoded Matrix tube containing 10ug of transfection-ready, dried plasmid DNA (reconstitute with 100 ul of water).

Reconstitution Method:

1. Centrifuge at 5,000xg for 5min.
2. Carefully open the tube and add 100ul of sterile water to dissolve the DNA.
3. Close the tube and incubate for 10 minutes at room temperature.
4. Briefly vortex the tube and then do a quick spin (less than 5000xg) to concentrate the liquid at the bottom.
5. Store the suspended plasmid at -20°C. The DNA is stable for at least one year from date of shipping when stored at -20°C.

RefSeq: [NM_001102450.3](#)

RefSeq Size: 912 bp

RefSeq ORF: 543 bp

Locus ID: 85397

UniProt ID: [P57771](#)

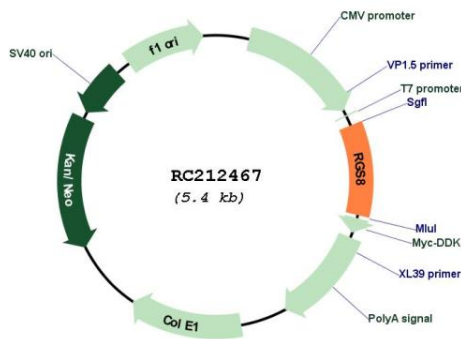
Cytogenetics: 1q25.3

Protein Families: Druggable Genome

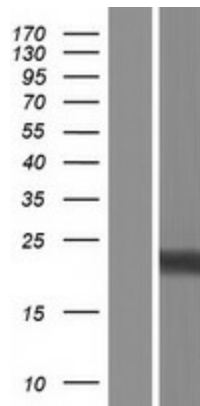
MW: 20.7 kDa

Gene Summary: This gene is a member of the regulator of G protein signaling (RGS) family and encodes a protein with a single RGS domain. Regulator of G protein signaling (RGS) proteins are regulatory and structural components of G protein-coupled receptor complexes. They accelerate transit through the cycle of GTP binding and hydrolysis to GDP, thereby terminating signal transduction, but paradoxically, also accelerate receptor-stimulated activation. [provided by RefSeq, Jul 2008]

Product images:



Circular map for RC212467



Western blot validation of overexpression lysate (Cat# [LY420151]) using anti-DDK antibody (Cat# [TA50011-100]). Left: Cell lysates from untransfected HEK293T cells; Right: Cell lysates from HEK293T cells transfected with RC212467 using transfection reagent MegaTran 2.0 (Cat# [TT210002]).