

## Product datasheet for RC212462

### Filamin C (FLNC) (NM\_001458) Human Tagged ORF Clone

#### Product data:

Product Type:	Expression Plasmids
Product Name:	Filamin C (FLNC) (NM_001458) Human Tagged ORF Clone
Tag:	Myc-DDK
Symbol:	Filamin C
Synonyms:	ABP-280; ABP280A; ABPA; ABPL; CMH26; FLN2; MFM5; MPD4; RCM5
Mammalian Cell Selection:	Neomycin
Vector:	pCMV6-Entry (PS100001)
E. coli Selection:	Kanamycin (25 ug/mL)
ORF Nucleotide Sequence:	>RC212462 representing NM_001458 Red=Cloning site Blue=ORF Green=Tags(s)

TTTTGTAATACGACTCACTATAGGGCGGCCGGAATTCGTCGACTGGATCCGGTACCGAGGAGATCTGCC  
GCC**CGATCGCC**

ATGATGAACAACAGCGGCTACTCAGACGCCGGCCTCGGCCTGGGCGATGAGACAGACGAGATGCCGTCCA  
CGGAGAAGGACCTGGCGGAGGACGCGCCGTGGAAGAAGATCCAGCAGAACACATTCACGCGCTGGTGCAA  
TGAGCACCTCAAGTGCCTGGGCAAGCGCCTGACCGACCTGCAGCGCGACCTCAGCGACGGGCTCCGGCTC  
ATCGCGCTGCTCGAGGTGCTCAGCCAGAAGCGCATGTACCGCAAGTTCCATCCGCGCCCCAACTCCGCC  
AAATGAAGCTGGAGAACGTGCCGTGGCCCTCGAGTTCCTCGAGCGGAGCACATCAAGCTCGTGTCCAT  
AGACAGCAAGGCCATCGTGGATGGGAACCTGAAGCTGATCCTGGGCCGTGATCTGGACGCTGATCCTGCAC  
TACTCCATCTCCATGCCCATGTGGGAGGATGAAGATGATGAGGATGCCCGCAAACAGACGCCAAGCAGC  
GGCTGCTTGGCTGGATCCAGAACAAGGTGCCCCAGCTGCCCATCACCAACTTCAACCGTGACTGGCAGGA  
CGGCAAAGCTCTGGGCGCCCTGGTGGACAACTGCGCCCCCGGTCTCTGCCCGACTGGGAGGCTGGGAC  
CCCAACCAGCCCGTGGAGAACGCCCGGGAGGCCATGCAGCAGGCCGACGACTGGCTTGGGGTGGCCAGG  
TCATTGCCCTGAGGAGATTGTGGACCCCAACGTGGATGAGCATTCTGTTATGACCTACCTGTCCAGTT  
CCCCAAGGCCAAGCTCAAACCTGGTGCCCTGTTCGATCCAAGCAGCTGAACCCCAAGAAAGCCATCGCC  
TATGGCCCTGGCATCGAGCCACAGGGCAACACCGTGTGCAGCCTGCCACTTCCCGTGCAGACGGTGG  
ACGCGGGCGTGGGCGAGGTGCTGGTCTACATCGAGGACCCTGAAGGCCACACCGAGGAGGCTAAGGTGGT  
TCCCAACAATGACAAGGATCGCACCTATGCTGTCTCTATGTGCCCAAGGTGCTGGGTTACACAAGGTG  
ACCGTGTCTTTGCTGGCCAGAACATTGAACGCAGTCCCTTTGAGGTGAACGTGGGCATGGCCCTGGGAG  
ATGCCAACAAGGTGTCAGCCCGTGGCCCTGGCCTGGAACCTGTGGGCAATGTGGCCAACAACCCACCTA  
CTTTGACATCTACACTGCGGGGGCCGGCACTGGCGATGTTGCTGTGGTATCGTGGACCCACAGGGCCGG  
CGGGACACAGTGGAGGTGGCCCTGGAGGACAAGGGTGACAGCACGTTCCGCTGCACATACAGACCTGCCA  
TGGAGGGGCCACATACCGTGCATGTGCCCTTTGCGGGTGCCCCATCACCCGAGTCCCTCCCTGTCCA  
TGTGTCGAAGCCTGTAACCCCAACGCCTGCCGCGCCTCTGGGCGAGGCTGCAGCCCAAGGGTGTTCG



[View online »](#)

GTGAAAGAGGTGGCTGACTTCAAGGTGTTACCAAGGGTGCCGGCAGCGGGGAGCTCAAGGTCACGGTCA  
 AGGGGCCAAAGGGCACAGAGGAGCCAGTGAAGGTGCGGGAGGCTGGGGATGGTGTGTTCCAGTGCGAGTA  
 CTACCCGGTGGTGCCTGGGAAGTATGTGGTGACCATCAGTGGGGCGGCTACGCCATCCCTCGCAGCCCC  
 TTTGAGGTACAGGTGAGCCCAGAGGCAGGAGTGCAAAAGGTCCGGGCTGGGGTCTGGTTTGGAGACTG  
 GCCAGGTGGGCAAGTCAAGCCGATTTTGTGGTGAAGCCATTGGCACCGAGGTGGGGACACTGGGCTTCTC  
 CATCGAGGGGCCCTCACAAGCCAAGATCGAATGTGACGACAAGGGGGATGGCTCTGCGATGTGCGGTAC  
 TGGCCACGGAGCCTGGGGAGTACGCTGTGCACGTCTGTGACGATGAGGACATCCGAGACTCACCT  
 TCATTGCCACATCTGCCCGCCCCACCTGACTGCTTCCAGATAAGGTGAAGGCCCTTGGGCTGGCCT  
 GGAGCCTACCGGCTGCATCGTGGACAAGCCGCTGAGTTCACCATTGATGCTCGTGCAGCTGGCAAGGGA  
 GACCTGAAGTCTATGCCAGGACGCCGACGGCTGTCCCATCGACATCAAGGTGATCCCCAACGGCGACG  
 GCACCTTCCGCTGCTCCTACGTGCCACCAAGCCATTAAGCACACCATCATCATCTCTGGGGAGGCGT  
 AAACGTGCCAAAGAGCCCTTCCGGGTGAACGTGGGCGAGGGCAGCCACCCCGAGCGGTAAAGGTGAC  
 GGCCCCGAGTGGAGAAGACAGGCCTCAAGGCCAATGAGCCACCTACTCACGGTGGACTGCAGCGAGG  
 CGGGCAAGGCGACGTGAGCATCGGCATCAAGTGCGCCAGGCGTGGTGGGCCCTGCAGAGGCTGACAT  
 TGACTTCGACATCATCAAGAATGACAACGACACCTTACCCTCAAGTACACGCCACAGGGGCGGGCCGC  
 TACACCATCATGGTGTGTTTGCCAACAGGAGATCCCCGCCAGCCCTTCCACATCAAGGTGGACCCAT  
 CCCACGATGCCAGCAAAGTCAAGGCCGAGGGCCCTGGGCTGAATCGCACAGGTGTGGAAGTCGGGAAGCC  
 CACCCACTTACGGTGTGACCAAGGGAGCCGGCAAGGCCAAGCTGGATGTGCAGTTTGCAGGGACAGCC  
 AAGGGCGAGGTTGTGCGGGACTTTGAGATCATAGACAACCATGACTACTCCTACACTGTCAAGTACACCG  
 CTGTCCAGCAGGGCAACATGGCAGTGACAGTGACTTATGGCGGGGACCCTGTCCCAAGAGCCCTTTGT  
 GGTGAATGTGGCACCCCGCTGGACCTCAGCAAATCAAAGTTCAGGGCCTTAATAGCAAGGTGGCTGTG  
 GGACAGGAACAAGCATTCTGTGAACACAGAGGGCTGGCGGTGAGGGCAACTGGATGTGCGGATGA  
 CTTCCGCTCTCGCCGGCCATCCCTGCAAGCTGGAGCCAGGCGGTGGAGCGGAAGCCAGGCTGTGCG  
 CTACATGCCCCCGAGGAGGGGCCCTACAAGGTGGATATCACCTACGATGGTACCCTGGCTGGCAGC  
 CCGTTTGTGTGGAGGTTGCTGCCCCCTGATCCCTCCAAGGTCTGTGCTTATGGCCCGGGTCTCAAGG  
 GTGGACTGGTAGGCACCCCGCGCATTCTCCATCGACACCAAGGGGGTGGCACAGGTGGCCTGGGGCT  
 GACCGTAGAGGGCCCTGCGAGGCCAAGATCGAGTGCCAGGACAATGGTGTGGTGTGCTGTGCTGTGAGC  
 TACCTGCCACGGAGCCTGGCGAGTACACCATCAACATCTGTTTGTGAGGCCACATCCCTGGCTCGC  
 CCTTCAAAGCCACCATTCGGCTGTGTTTACCCGAGCAAGGTGCGGGCCAGTGGACCGGGCTGGAGCG  
 CGCAAGGTGGTGGAGGACCCACCTTCACTGTGGACTGCTCAGAGGCAGGCGAGGCGGAGCTGACCATT  
 GAGATCCTGTGCGATGCCGGGTCAAGGCCGAGGTGCTGATCCACAACAACGCGGATGGCACCTACCACA  
 TCACCTACAGCCCTGCCTTCCCTGGCACCTACACCATTACCATCAAGTATGGCGGGCATCCCGTGGCCAA  
 ATTCCCCACCCGTGCCATGTGCAGCCTGCGGTGATACCAAGTGGCGTCAAGGTCTCAGGGCCTGGTGT  
 GAGCCACACGGTGTCTGCGGGAGGTGACCACTGAGTTCACTGTGGATGCAAGATCCCTAACAGCCACAG  
 GCGGCAACCACGTGACGGCTCGTGTGCTCAACCCTCGGGGGCAAGACAGACACCTATGTGACAGACAA  
 TGGGGACGGCACCTACCGAGTGCAGTACACCGCTACGAGGAGGGCGTGCATCTGGTGGAGGTCCTGTAT  
 GATGAGGTGCTGTGCCAAGAGCCCTTCCGAGTGGGCGTGACCGAGGGCTGTGATCCCACCCCGTCC  
 GAGCCTTCCGGCCAGGCTGGAGGTTGGCTTGGTCAACAAGGCCAACCATTCACTGTGGAGACAGGGG  
 AGCGGGCACCGGGGCCCTTGGCCTAGCCATCGAGGTCCTCGGAAGCCAAGATGTCCTGCAAGGACAAC  
 AAGGATGGTAGCTGCACCGTGGAGTACATCCCCTTCACTCCTGGAGACTATGACGTCAACATCACCTTCG  
 GGGGGCGGCCATCCCAGGGAGCCGTTCCGCGTGCCAGTGAAGGATGTGGTGGACCCTGGGAAGGTGAA  
 GTGCTCAGGGCCAGGCTGGGGCTGGTGTGAGGGCCCGGTTTCTCAGACCTTACAGTGGACTGCAGT  
 CAAGCTGGCCGGGCGCCCTGCAGGTGGCTGTGCTGGGCCACAGGTGTGGCCGAGCCTGTGGAGGTGC  
 GGGACAATGGAGATGGCACCCACACTGTCCACTACACCCAGCCACTGACGGGCCCTACACGGTAGCCGT  
 CAAGTATGCTGACCAGGAGGTGCCACGCAGCCCTTCAAGATCAAGTCTCCAGCTCATGATGCCAGC  
 AAGGTGCGGGCCAGCGGCCAGGCTCAACGCCTCTGGCATCCCTGCCAGCCTGCCTGTGGAGTTACCA  
 TCGACGCACGGGACGCGGGCAGGGGTTGCTCACTGTCCAGATCTTGGACCCGAGGGTAAGCCAAAGAA  
 GGCCAACATCCGGGACAATGGGGATGGCAGTACACTGTGCTCCTACCTGCCGGACATGAGTGGCCGGTAC  
 ACCATCACCATCAAGTATGGCGGTGATGAGATCCCTACTCGCCCTTCCGCATCCATGCTCTGCCACTG  
 GGGATGCCAGCAAGTGCCTCGTACAGTGTCCATTGGAGGCCATGGCCTGGGTGCCTGCCTGGGCCCTCG  
 AATCCAGATTGGGCAGGAGACGGTATCACGGTGGATGCCAAGGCAGCCGGTGGGGGAAGGTGACATGC  
 ACGGTGTCCACGCCGATGGGGCAGAGCTCGATGTGGATGTGGTTGAGAACCATGACGGTACCTTTGACA

TCTACTACACAGCGCCCGAGCCGGGCAAGTACGTCATCACCATCCGCTTCGGGGGTGAGCACATCCCCAA  
 CAGCCCCTTCCACGTGCTGGCGTGTGACCCCCTGCCGCACGAGGAGGAGCCCTCTGAAGTGCCACAGCTG  
 CGCCAGCCCTACGCTCCTCCCGGCCGGCGCCGCCACACACTGGGCCACAGAGGAGCCAGTGGTGC  
 CTGTGGAGCCAATGGAGTCCATGCTGAGGCCCTTCAACCTGGTCATCCCCTTCGCGGTGCAGAAAGGGGA  
 GCTCACAGGAGAGGTGCGGATGCCCTCGGGGAAGACGGCACGGCCCAACATCACCAGCAACAAGGACGGC  
 ACCATCACGGTGAAGTATGCACCACTGAGAAAGGCTGCACCAGATGGGGATCAAGTATGACGGCAACC  
 ACATCCCTGGGAGCCCTTACAGTTCTATGTGGATGCCATCAACAGCCGCCATGTCAGTGCCTATGGGCC  
 AGGCCTGAGCCATGGCATGGTCAACAAGCCAGCCACCTTCACTATTGTCACCAAAGATGCTGGAGAAGGG  
 GGTCTGTCACTGGCCGTGGAGGGCCATCCAAGGCAGAGATCACCTGTAAGGACAACAAGGATGGCACCT  
 GCACCGTGTCTATCTGCCGACTGCGCCTGGAGACTACAGCATCATCGTGCCTTCGATGACAAGCACAT  
 CCCGGGGAGCCCTTACAGCCAAGATCACAGGTGATGACTCCATGAGGACCTCACAGCTGAATGTGGGC  
 ACCTCCACGACGTGTCCTGAAGATCACGAGAGTGTCTGAGCCAGCTGACCGCCAGCATCCGTGCC  
 CCTCGGCAACGAGGAGCCCTGCCTGCTGAAGCGCCTGCCAACCAGGCACATTGGGATCTCCTTACCCC  
 CAAGGAGGTGGGGAGCACGTGGTGAAGCGCTGCCAACCAGGCACATTGGGATCTCCTTACCCC  
 ATCCTGGTGGGGCCATCTGAGATCGGGGACGCCAGCAAGGTGCGGGTCTGGGGCAAGGGGCTTCCGAGG  
 GACACACATTCCAGGTGGCAGAGTTCATCGTGGACACTCGCAATGCAGGTTATGGGGCTTGGGGCTGAG  
 TATTGAAGGCCCAAGCAAGGTGGACATCAACTGTGAGGACATGGAGGACGGGACATGCAAAGTCACTAC  
 TGCCCCACCGAGCCCGGCACCTACATCATCAACATCAAGTTTGCTGACAAGCACGTGCCTGGAAGCCCT  
 TCACTGTGAAGGTGACCGGCGAGGGCCGCATGAAGGAGAGCATCACCCGGCGGAGACAGGCACCTTCCAT  
 CGCCACCATCGGCAGCACCTGTGACCTCAACCTCAAGTCCCAGGAACTGGTCCAGATGGTGTCTGCC  
 CAGGAGCGCCTGACACGCACCTTACACGCAGCAGCCACCTACACCCGACGGAGCGCACGGAGATCA  
 GCAAGACGCGGGCGGGGAGACAAGCGCGAGGTGCGGGTGGAGGAGTCCACCCAGTTCGCGGACCC  
 TTCCCTGCTGTGTTGGGGACTTCTGGGCGGGAGCGCCTGGGATCCTTCGGCAGCATCACCCGGCAG  
 CAGGAGGTGAGGCCAGCTCTCAGGACATGACTGCACAGGTGACCAGCCATCGGGCAAGGTGGAAGCCG  
 CAGAGATCGTCGAGGGCAGGACAGCGCTACAGCGTGCCTTTGTGCCCCAGGAAATGGGGCCCATAC  
 GGTGCTGTCAAGTACCGTGGCCAGCACGTGCCCGGCAGCCCTTTCAGTTCACTGTGGGCCGCTGGGT  
 GAAGGTGGTGCCCAAGGTGCGGGCCGGAGGCACAGGGCTGGAGCGAGGTGTGGCCGGCTGCCAGCCG  
 AGTTCAGCATCTGGACCCGGGAGGCTGGCGCTGGGGCCTGTCCATTGCTGTGGAGGTCTAGCAAAGC  
 GGAGATTGCATTTGAGGATCGCAAAGATGGCTCCTGCGGCGTCTCCTATGTCGTCCAGGAACCAGGTGAC  
 TATGAGGTCTCCATCAAGTTCAATGATGAGCACATCCCAGACAGCCCTTTGTGGTGCCTGTGCCCTCCC  
 TCTCGGATGACGCTCGCGTCTCACTGTACCAGCCTCCAGGAGACGGGGCTCAAGGTGAACCAGCCAGC  
 GTCCTTTGCCGTGACGCTGAACGGTGCCGGGGCGTGATTGATGCCCGGGTGCACACACCCCTCGGGGGCT  
 GTGGAGGAGTGCTACGTCTGAGCTGGACAGTACAAGCACACCATCCGCTTATCCCCACGAGAATG  
 GCGTCCACTCCATCGATGTCAAGTTCAACGGTGCCACATCCCTGGAAGTCCCTTCAAGATCCGCGTTGG  
 GGAGCAGAGCCAGGCTGGGGACCCAGGCTTGGTGTGAGCCTACGGTCTGGGCTCGAGGGAGGCACTACC  
 GGTGTGTCATCAGAGTTCATCGTGAACACCCTGAATGCCGGCTCGGGGGCCTTGTCTGTACCATTGATG  
 GCCCTCCAAGGTGCAGCTGGACTGTCCGGAGTGTCTGAGGGCCATGTGGTCACTATACTCCCATGGC  
 CCCTGGCAACTACCTCATTGCCATCAAGTACGGTGGCCCCAGCACATCGTGGGAGCCCTTCAAGGCC  
 AAGGTCACTGGTCCGAGGCTGTCCGGAGGCCACAGCCTTACGAAACATCCACGGTCTGGTGGAGACTG  
 TGACCAAGTCTCCTCAAGCCGGGGCTCCAGCTACAGCTCCATCCCAAGTTCCTCTCAGATGCCAGCAA  
 GGTGGTGAAGTCCGGGGCCCTGGGCTGTCCAGGCCCTTCTGGGCCAGAAAGTCTTCCAGTGGACTGC  
 AGCAAAGCAGGCACCAACATGATGATGGTGGCGTGCACGGCCCCAAGACCCCTGTGAGGAGGTGTACG  
 TGAAGCACATGGGGAACCGGGTGTACAATGTCACCTACACTGTCAAGGAGAAAGGGGACTACATCCTCAT  
 TGTCAAGTGGGGTACGAAAGTGTCCCTGGAAGCCCTTCAAAGTCAAGGTCCCT

ACGCGTACGCGGGCGCTCGAGCAGAACTCATCTCAGAAGAGGATCTGGCAGCAATGATATCCTGGATT  
 ACAAGGATGACGACGATAAGGTTTAA

**Protein Sequence:** >RC212462 representing NM\_001458  
 Red=Cloning site Green=Tags(s)

MMNNSGYS DAGLGLGDETDEMPSTEKDLAEDAPWKKIQQNTFTRWCNEHLKCVGKRLTDLQRDLSDGLRL  
 IALLEVLSQKRMRYKFFHRPNFRQMKLENVSVALEFLEREHIKLVSIDSKAIVDGNLKLILGLIWTILH  
 YSISMPMWEDEDEDARKQTPKQRLLGWIQNKVPLPITNFNRDWQDGKALGALVDCAPGLCPDWEAWD  
 PNQPVENAREAMQQADDWLGVVQVIAPEEIVDPNVDEHSVMTYLSQFPKAKLKPAGVRSKQLNPKKAIA  
 YGPGIEPQGNVLPQAHFTVQTVDAGVGEVLYYIEDPEGHTEAKVVPNNDKDRYAVSVYVVKVAGLHKV  
 TVLFAGQNIERSPFVNVGMALGDANKVSARGPGLPEVGNVANKPTYFDIYTAGAGTGDVAVVIVDPQGR  
 RDTVEVALEDKGDSTFRCTYRPAMEGPHTVHVAFAGAPITRSPFPVHVSEACNPACRASGRGLQPKGVR  
 VKEVADFKVFTKGAGSGELKVTVKGPKGTEEPVKVREAGDGVFECEYYPVPGKYVVTITWGGYAI PRSP  
 FEVQVSPEAGVQKVRWAGPGLTGVQVKSADFVVEAIGTEVGTGFSIEGSPQAKIECDDKGDGSDVRY  
 WPTPEGEYAVHVICDDEDIRDSPIAHILPAPPDCFPDKVKAFGPGLPTGCIVDKPAEFTIDARAAGK  
 DLKLYAQDADGCPIDIKVIPNGDGTFRCSYVPTKPIKHTIIISWGGVNVKSPFRVNVGEGSHPERVKVY  
 GPGVEKTGLKANEPTYFTVDCSEAGQGDVSIKIKCAPGVVGPAAEADIDFDIKNNDTFTVKYTPPGAGR  
 YTIMVLFANQEI PASPFHIKVDPSHDASKVKAEGPGLNRTGVEVGKPTHFTVLTGAGKAKLDVQFAGTA  
 KGEVVRDFEIIDNHDSYTVKYTAVQQGNMAVTVTYGGDPVVKSPFVNVNAPPLDL SKIKVQGLNSKVAV  
 GQEQA FSVNTRGAGGQGLDVRMTSPSRPIPCKLEPGGGAEAQAVRYMPP EEGPYKVDITYDGHVPGS  
 PFAVEGVLPPDP SKVCA YGPGKGLVGT PAFPSIDTKGAGTGGGLTVEGPCEAKIECQDNGDGS CAVS  
 YLPTPEGEY TINILFAEAH IPGSPFKATIRPVFDP SKVRASG PGLERKGVGEAATFTVDCSEAGEAELTI  
 EILSDAGVKA EVL IHNADGTYHITYSPAFPGTYTITIKYGGHPVKFPTRVHVQPAVDTSKVVS GPGV  
 EPHGVLREVTTEFTVDARSLTATGGNHVTARVLNPSGAKTDTYVTDNGDGT YRVQYTA YEEGVHLVEVLY  
 DEVAVPKSPFRVGVTEGCDPTRVRAFPGLEGLVNKANRFTVETRGAGTGGGLAIEGSPSEAKMSCKDN  
 KDG SCTVEYIPFPGDYD VNIITFGGRPIPGSPFRVPVKDVDPGKVKCSGPGLGAGVRARVPQTFVDCS  
 QAGRAPLQVAVL GPTGVAEPVEVRDNGDGTHTVHYTPATDGPYTVAVKYADQEVPRSPFKIKVLP AHDAS  
 KVRASG PGLNASGIPASLPVEFTIDARDAGEGLLTVQILDPEGKPKKANIRDNGDGTYSVLPDMSGRY  
 TITIKYGGDEIPYSPFR IHALPTGDASKCLVTVSIGGHGLGACLGPRIQIQGETVITVDAKAAGEGKVT  
 TVSTPDGAELD VDVVENHDGTFDIYYTAPEPGKYVITIRFGGEHIPNSPFHVLACDPLPHEE EPSEVPQL  
 RQPYAPPRPGARPTHWATEEPVVPVEMESMLRPFNLVIPFAVQK GELTGEVRMPSGKTARPNITDNKDG  
 TITVRYAPTEKGLHQMGIKYDGNH IPGSPLQFYVDAINS RHVSAYG PGLSHGMVNK PATFTIVTKDAGEG  
 GLSLAVEGPSKAEITCKDNKDGCTVSYLPTAPGDYSIIIVRFDDKHIPGSPFTAKITGDDSMRTSQLNVG  
 TSTDVSLKITESDLSQLTASIRAPSGNEEPCLLKRLPNRHIGISF TPKEVGEHVVSVRKSGKHVTNSPFK  
 ILVGPSEIGDASKVRVWGKGLSEGHTFQVAE FIVDTRNAGYGGGLSIEGSPSKVDINCEDMEDGTCKVY  
 CPTPEPTYIINIKFADKHVPGSPFTVKVTGEGRMKESITRRRQAPSIATIGSTCDLNLKIPGNWFQMVSA  
 QERLTRTFTRSSH TYTRTERTEISKTRGGETKREVRVEESTQVGGDPFPAVFGDFLGRERLGSFGSITRQ  
 QEGEASSQDMTAQVTPSPGKVEAAEIVEGEDSAYSVRFPQEMGPHTVAVKYRGQHVPGPSFPQFTVGPLG  
 EGGAHKVRAGGTGLERGVAGVPAEFSIWTREAGAGGLSIAVEGPSKAEIAFEDRDKGSCGVS YVVQEPGD  
 YEVS IKFNDEHIPD SPFVVPVASL SDDARRLTVTSLQETGLKVNQ PASFAVQLNGARGVIDARVHTPSGA  
 VEECYVSELDSKHTIRFIPHENGVH SIDVKFNGAHIPGSPFKIRVGEQS QAGDPGLVSAYGPLEGGTT  
 GVSSEFIVNTLNAGSGALSVTIDGPSKVQLDCRECEGHVVTYTPMAPGNYLIAIKYGGPQHIVGSPFKA  
 KVTGPRLSGHSLHETSTVLVETVTKSSSRGSSYSSIPKSSDASKVVTRGPGLSQAFVQKNSFTVDC  
 SKAGTNMMMGVHGPKTPCEEVYVKHMGNRVYVNTYTVKEKGDYILIVKWGDESVPGPSFPKVKVP

TRTRPLEQKLISEEDLAANDILDYKDDDDKV

**Chromatograms:** [https://cdn.origene.com/chromatograms/mk8023\\_d07.zip](https://cdn.origene.com/chromatograms/mk8023_d07.zip)

**Restriction Sites:** Sgfl-Mlul

**Cloning Scheme:**


**ACCN:** NM\_001458

**ORF Size:** 8175 bp

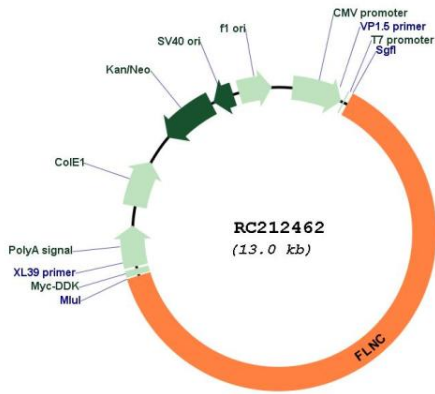
**OTI Disclaimer:** Due to the inherent nature of this plasmid, standard methods to replicate additional amounts of DNA in E. coli are highly likely to result in mutations and/or rearrangements. Therefore, OriGene does not guarantee the capability to replicate this plasmid DNA. Additional amounts of DNA can be purchased from OriGene with batch-specific, full-sequence verification at a reduced cost. Please contact our customer care team at [custsupport@origene.com](mailto:custsupport@origene.com) or by calling 301.340.3188 option 3 for pricing and delivery.

The molecular sequence of this clone aligns with the gene accession number as a point of reference only. However, individual transcript sequences of the same gene can differ through naturally occurring variations (e.g. polymorphisms), each with its own valid existence. This clone is substantially in agreement with the reference, but a complete review of all prevailing variants is recommended prior to use. [More info](#)

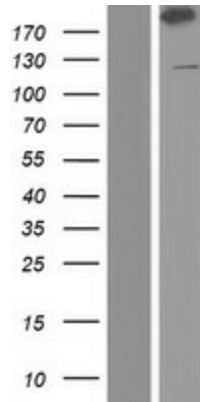
**OTI Annotation:** This clone was engineered to express the complete ORF with an expression tag. Expression varies depending on the nature of the gene.

<b>Components:</b>	The ORF clone is ion-exchange column purified and shipped in a 2D barcoded Matrix tube containing 10ug of transfection-ready, dried plasmid DNA (reconstitute with 100 ul of water).
<b>Reconstitution Method:</b>	<ol style="list-style-type: none"><li>1. Centrifuge at 5,000xg for 5min.</li><li>2. Carefully open the tube and add 100ul of sterile water to dissolve the DNA.</li><li>3. Close the tube and incubate for 10 minutes at room temperature.</li><li>4. Briefly vortex the tube and then do a quick spin (less than 5000xg) to concentrate the liquid at the bottom.</li><li>5. Store the suspended plasmid at -20°C. The DNA is stable for at least one year from date of shipping when stored at -20°C.</li></ol>
<b>Note:</b>	Plasmids are not sterile. For experiments where strict sterility is required, filtration with 0.22um filter is required.
<b>RefSeq:</b>	<u><a href="#">NM_001458.4</a></u> , <u><a href="#">NP_001449.3</a></u>
<b>RefSeq Size:</b>	9146 bp
<b>RefSeq ORF:</b>	8178 bp
<b>Locus ID:</b>	2318
<b>UniProt ID:</b>	<u><a href="#">Q14315</a></u>
<b>Cytogenetics:</b>	7q32.1
<b>Protein Pathways:</b>	Focal adhesion, MAPK signaling pathway
<b>MW:</b>	290.8 kDa
<b>Gene Summary:</b>	This gene encodes one of three related filamin genes, specifically gamma filamin. These filamin proteins crosslink actin filaments into orthogonal networks in cortical cytoplasm and participate in the anchoring of membrane proteins for the actin cytoskeleton. Three functional domains exist in filamin: an N-terminal filamentous actin-binding domain, a C-terminal self-association domain, and a membrane glycoprotein-binding domain. Two transcript variants encoding different isoforms have been found for this gene. [provided by RefSeq, Jul 2008]

Product images:



Circular map for RC212462



Western blot validation of overexpression lysate (Cat# [LY419926]) using anti-DDK antibody (Cat# [TA50011-100]). Left: Cell lysates from untransfected HEK293T cells; Right: Cell lysates from HEK293T cells transfected with RC212462 using transfection reagent MegaTran 2.0 (Cat# [TT210002]).