

Product datasheet for **RC212461**

IRF5 (NM_002200) Human Tagged ORF Clone

Product data:

Product Type:	Expression Plasmids
Product Name:	IRF5 (NM_002200) Human Tagged ORF Clone
Tag:	Myc-DDK
Symbol:	IRF5
Synonyms:	interferon regulatory factor 5; SLEB10
Mammalian Cell Selection:	Neomycin
Vector:	pCMV6-Entry (PS100001)
E. coli Selection:	Kanamycin (25 ug/mL)



[View online »](#)

ORF Nucleotide Sequence:

>RC212461 representing NM_002200
 Red=Cloning site Blue=ORF Green=Tags(s)

TTTTGTAATACGACTCACTATAGGGCGGCCGGGAATTCGTCGACTGGATCCGGTACCGAGGAGATCTGCC
 GCC**CGGATCGCC**

ATGAACCAGTCCATCCCAGTGGCTCCCACCCACCCCGCGCTGCGGCTGAAGCCCTGGCTGGTGCC
 AGGTGAACAGCTGCCAGTACCCAGGCTTCAATGGGTCAACGGGAAAAGAAATTATTCTGCATCCCTG
 GAGGCATGCCACAAGGCATGGTCCCAGCCAGGACGGAGATAACACCATCTTCAAGCCTGGGCAAGGAG
 ACAGGGAAATACACCGAAGGCGTGGATGAAGCCGATCCGGCCAAGTGAAGGCCAACCTGCGCTGTGCC
 TTAACAAGAGCCGGGACTTCCGCTCATCTACGACGGGCCCGGACATGCCACCTCAGCCCTACAAGAT
 CTACGAGGTCTGCTCCAATGGCCCTGCTCCACAGACTCCAGCCCCCTGAGGATTACTCTTTTGGTGCA
 GGAGAGGAGGAGAAGAAGAGGAAGAGCTGCAGAGGATGTTGCCAAGCCTGAGCCTCACAGATGCAGTGC
 AGTCTGGCCCCACATGACACCTATTCTTTACTCAAAGAGGATGCAAGTGGCCGCTACTCTGCAGCC
 GCCACTCTGCAGCCGCCGTGGTGTGGTCCCCTGCTCCAGACCCAGCCCCCTGGCTCCTCCCCT
 GGCACCCCTGCTGGCTTACGGGAGCTTCTCTGAGGTCTGGAGCCTGGGCCCTGCCTGCCAGCCTGC
 CCCCTGCAGGCGAACAGCTCCTGCCAGACCTGCTGATCAGCCCCACATGCTGCCTCTGACCGACCTGGA
 GATCAAGTTTTCAGTACCGGGGGCGGCCACCCCGGGCCCTCACCATCAGCAACCCCATGGCTGCCGGCTC
 TTCTACAGCCAGCTGGAGGCCACCCAGGAGCAGGTGGAACCTTTCGGCCCCATAAGCCTGGAGCAAGTGC
 GCTTCCCAGCCCTGAGGACATCCCAGTGACAAGCAGCGCTTCTACACGAACAGCTGCTGGATGTCCT
 GGACCGCGGGCTCATCTCCAGCTACAGGGCCAGGACCTTATGCCATCCGCCTGTGTGAGTGAAGGTG
 TTCTGGAGCGGGCCTTGTGCCTCAGCCATGACTCATGCCCAACCCATCCAGCGGGAGGTCAAGACCA
 AGCTTTTTCAGCCTGGAGCATTTTCTCAATGAGCTCATCCTGTTCCAAAAGGGCCAGACCAACCCACC
 ACCCTTCGAGATCTTCTGCTTTGGGAAGAATGGCCTGACCGCAAACCCCGAGAGAAGAAGCTCATT
 ACTGTACAGGTGGTGCCTGTAGCAGCTCGACTGCTGCTGGAGATGTTCTCAGGGAGCTATCTTGGTCAG
 CTGATAGTATCCGGCTACAGATCTCAAACCCAGACCTCAAAGACCGCATGGTGGAGCAATTCAAGGAGCT
 CCATCACATCTGGCAGTCCCAGCAGCGTTGCAGCCTGTGGCCAGGCCCTCCTGGAGCAGGCCTTGGT
 GTTGGCCAGGGCCCTGGCCTATGCACCCAGCTGGCATGCAA

ACGCGTACGCGGCCGCTCGAGCAGAACTCATCTCAGAAGAGGATCTGGCAGCAAATGATATCCTGGATT
 ACAAGGATGACGACGATAAGGTTTAA

Protein Sequence:

>RC212461 representing NM_002200
 Red=Cloning site Green=Tags(s)

MNQSI PVAPTPRRVRLKPWLVAQVNSCQYPLQWVNGEKKLFCIPWRHATRHPGSPQDNDNTIFKAWAKE
 TGKYTEGVDEADPAKWANLRCALNKSDFRLIYDGRDMPYPYKIYEVCSNGPAPTDSQPPEDYSFGA
 GEEEEEEELQRMLPSLSLTDVAVQSGPHMTPYSLLKEDVKWPPTLQPPTLQPPVVLGPPAPDPSPLAPP
 GNPAGFRELLSEVLEPGPLPASLPAGEQLLPDLLISPHMLPLTDLEIKFYRGRPPRALTISNPHGCR
 FYSQLEATQEVELFGPISLEQVRFSPEDIPSDKQRFYTNQLLDVLDLGLILQLQGQDLYAIRLCQCKV
 FWSGPCASAHDS CPNPIQREVTKLFSLEHFLNELILFQKQNTNPPPFIEFFCFGEWPDRKPREKKLI
 TVQVVPVAARLLLEMFSGELSWADSIRLQISNPDLKDRMVEQFKELHHIWQSQQRLQPVAQAPPAGL
 VGQGPWPMHPAGMQ

TRTRPLEQKLISEEDLAANDILDYKDDDDKV

Chromatograms:

https://cdn.origene.com/chromatograms/mg2722_d01.zip

Restriction Sites:

SgfI-MluI

Cloning Scheme:


ACCN: NM_002200

ORF Size: 1512 bp

OTI Disclaimer: The molecular sequence of this clone aligns with the gene accession number as a point of reference only. However, individual transcript sequences of the same gene can differ through naturally occurring variations (e.g. polymorphisms), each with its own valid existence. This clone is substantially in agreement with the reference, but a complete review of all prevailing variants is recommended prior to use. [More info](#)

OTI Annotation: This clone was engineered to express the complete ORF with an expression tag. Expression varies depending on the nature of the gene.

Components: The ORF clone is ion-exchange column purified and shipped in a 2D barcoded Matrix tube containing 10ug of transfection-ready, dried plasmid DNA (reconstitute with 100 ul of water).

Reconstitution Method:

1. Centrifuge at 5,000xg for 5min.
2. Carefully open the tube and add 100ul of sterile water to dissolve the DNA.
3. Close the tube and incubate for 10 minutes at room temperature.
4. Briefly vortex the tube and then do a quick spin (less than 5000xg) to concentrate the liquid at the bottom.
5. Store the suspended plasmid at -20°C. The DNA is stable for at least one year from date of shipping when stored at -20°C.

RefSeq: [NM_002200.3](#), [NP_002191.1](#)

RefSeq Size: 2870 bp

RefSeq ORF: 1514 bp

Locus ID: 3663

Cytogenetics: 7q32.1

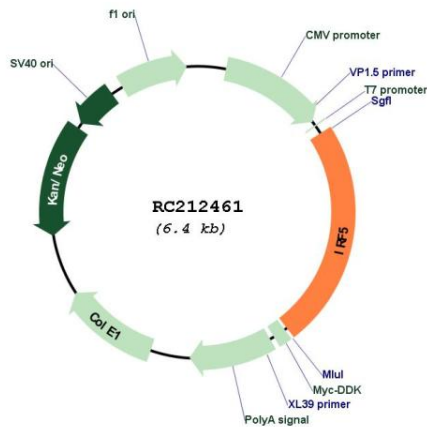
Protein Families: Transcription Factors

Protein Pathways: Toll-like receptor signaling pathway

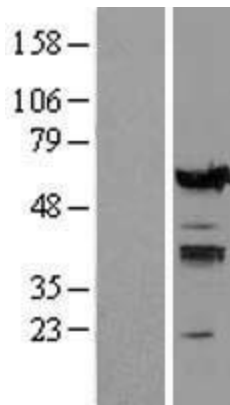
MW: 56.5 kDa

Gene Summary: This gene encodes a member of the interferon regulatory factor (IRF) family, a group of transcription factors with diverse roles, including virus-mediated activation of interferon, and modulation of cell growth, differentiation, apoptosis, and immune system activity. Members of the IRF family are characterized by a conserved N-terminal DNA-binding domain containing tryptophan (W) repeats. Alternative promoter use and alternative splicing result in multiple transcript variants, and a 30-nt indel polymorphism (SNP rs60344245) can result in loss of a 10-aa segment. [provided by RefSeq, Dec 2016]

Product images:



Circular map for RC212461



Western blot validation of overexpression lysate (Cat# [LY419472]) using anti-DDK antibody (Cat# [TA50011-100]). Left: Cell lysates from untransfected HEK293T cells; Right: Cell lysates from HEK293T cells transfected with RC212461 using transfection reagent MegaTran 2.0 (Cat# [TT210002]).



Coomassie blue staining of purified IRF5 protein (Cat# [TP312461]). The protein was produced from HEK293T cells transfected with IRF5 cDNA clone (Cat# RC212461) using MegaTran 2.0 (Cat# [TT210002]).