

Product datasheet for **RC212451**

PID1 (NM_017933) Human Tagged ORF Clone

Product data:

Product Type: Expression Plasmids
Product Name: PID1 (NM_017933) Human Tagged ORF Clone
Tag: Myc-DDK
Symbol: PID1
Synonyms: HMFN2073; NYGGF4; P-CLI1; PCLI1
Mammalian Cell Selection: Neomycin
Vector: pCMV6-Entry (PS100001)
E. coli Selection: Kanamycin (25 ug/mL)
ORF Nucleotide Sequence: >RC212451 representing NM_017933
 Red=Cloning site Blue=ORF Green=Tags(s)

TTTTGTAATACGACTCACTATAGGGCGCCGGGAATTCGTCGACTGGATCCGGTACCGAGGAGATCTGCC
 GCC**CGATCGCC**

ATGCCAAGGATTGCTGGCAACCACCTGATGTTAGAAAGAGTCGAGGACATGTTCTTCTCCAGAGCTTTTGG
 ATGGTGTGTGGCCCTGCCAACCTTTACATTTTGGACTTCCAGCCTCCGAAATGCACTTTCCAGACCATGCT
 GAAGTCTAAATTGAATGTCTTAACACTGAAAAAGGAACCTCTCCAGCGGTCATCTTCCATGAGCCGGAG
 GCCATTGAGCTGTGCACGACCACACCGCTGATGAAGACAAGGACTCACAGTGGCTGCAAGGTTACCTACC
 TGGGCAAAGTCTCCACCACTGGCATGCAGTTTTTGTCCAGGCTGCACAGAAAAGCCAGTCATTGAGCTCTG
 GAAGAAGCACACGCTAGCCCAGAGGATGTCTTTCCGGCCAATGCCCTCCTGGAAATCCGGCCATCCAA
 GTTTGGCTCCATCATCTCGACCACAAAGGGGAGGCCACAGTGCACATGGATACCTTCCAGGTGGCCCGCA
 TCGCCTACTGCACCGCCGACCACAACGTGAGCCCCAACATCTTCGCTGGGTCTACAGGGAGATCAATGA
 TGACCTGTCTACCAGATGGACTGCCACGCCGTGGAGTGGAGAGCAAGCTCGAGGCCAAGAAAATGGCC
 CACGCCATGATGGAGGCCTTCAGGAAGACTTTCCACAGTATGAAGAGCGACGGCCGGATCCACAGCAACA
 GCTCCTCCGAAGAGGTTTCCAGGAATTGGAATCCGATGATGGC

ACGCGTACGCGGCCGCTCGAGCAGAAACTCATCTCAGAAGAGGATCTGGCAGCAAATGATATCCTGGATT
 ACAAGGATGACGACGATAAGGTTTAA



[View online »](#)

Protein Sequence: >RC212451 representing NM_017933
Red=Cloning site Green=Tags(s)

MPRIAGNHLMLEESRTCSSPELLDGVWPCQPLHFGLPASEMHFQTMLKSKLNVLTLLKKEPLPAVIFHEPE
 AIELCTTTPLMKTRTHSGCKVTYLGKVVSTTGMQFLSGCTEKPVIELWKKHTLAREDEVFPANALLEIRPFQ
 VWLHHLDHKGEATVHMDTFQVARIAYCTADHNVSPNIFAWVYREINDDL SYQMDCHAVECESKLEAKKLA
 HAMMEAFRKTTFHSMKSDGRIHSNNSSEEVSQELESDDG

TRTRPLEQKLISEEDLAANDILDYKDDDDKV

Chromatograms: https://cdn.origene.com/chromatograms/mk6098_g09.zip

Restriction Sites: SgfI-MluI

Cloning Scheme:

Cloning sites used for ORF Shuttling:



* The last codon before the Stop codon of the ORF

ACCN: NM_017933

ORF Size: 744 bp

OTI Disclaimer: The molecular sequence of this clone aligns with the gene accession number as a point of reference only. However, individual transcript sequences of the same gene can differ through naturally occurring variations (e.g. polymorphisms), each with its own valid existence. This clone is substantially in agreement with the reference, but a complete review of all prevailing variants is recommended prior to use. [More info](#)

OTI Annotation: This clone was engineered to express the complete ORF with an expression tag. Expression varies depending on the nature of the gene.

Components: The ORF clone is ion-exchange column purified and shipped in a 2D barcoded Matrix tube containing 10ug of transfection-ready, dried plasmid DNA (reconstitute with 100 ul of water).

Reconstitution Method:

1. Centrifuge at 5,000xg for 5min.
2. Carefully open the tube and add 100ul of sterile water to dissolve the DNA.
3. Close the tube and incubate for 10 minutes at room temperature.
4. Briefly vortex the tube and then do a quick spin (less than 5000xg) to concentrate the liquid at the bottom.
5. Store the suspended plasmid at -20°C. The DNA is stable for at least one year from date of shipping when stored at -20°C.

RefSeq: [NM_017933.5](#)

RefSeq Size: 2745 bp

RefSeq ORF: 747 bp

Locus ID: 55022

UniProt ID: [Q7Z2X4](#)

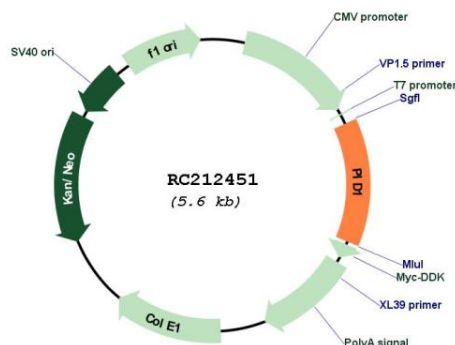
Cytogenetics: 2q36.3

Domains: PID

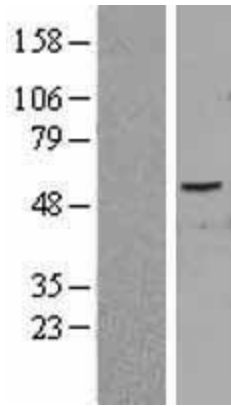
MW: 27.9 kDa

Gene Summary: Increases proliferation of preadipocytes without affecting adipocytic differentiation. [UniProtKB/Swiss-Prot Function]

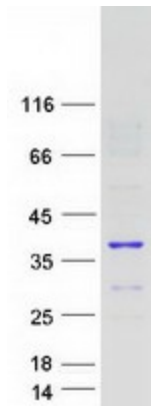
Product images:



Circular map for RC212451



Western blot validation of overexpression lysate (Cat# [LY402631]) using anti-DDK antibody (Cat# [TA50011-100]). Left: Cell lysates from untransfected HEK293T cells; Right: Cell lysates from HEK293T cells transfected with RC212451 using transfection reagent MegaTran 2.0 (Cat# [TT210002]).



Coomassie blue staining of purified PID1 protein (Cat# [TP312451]). The protein was produced from HEK293T cells transfected with PID1 cDNA clone (Cat# RC212451) using MegaTran 2.0 (Cat# [TT210002]).