

## Product datasheet for **RC212449**

### PPAR gamma (PPARG) (NM\_005037) Human Tagged ORF Clone

#### Product data:

Product Type:	Expression Plasmids
Product Name:	PPAR gamma (PPARG) (NM_005037) Human Tagged ORF Clone
Tag:	Myc-DDK
Symbol:	PPAR gamma
Synonyms:	CIMT1; GLM1; NR1C3; PPARG1; PPARG2; PPARG5; PPARGgamma
Mammalian Cell Selection:	Neomycin
Vector:	pCMV6-Entry (PS100001)
E. coli Selection:	Kanamycin (25 ug/mL)



[View online »](#)

**ORF Nucleotide Sequence:**

>RC212449 ORF sequence  
 Red=Cloning site Blue=ORF Green=Tags(s)

TTTTGTAATACGACTCACTATAGGGCGGCCGGAATTCGTCGACTGGATCCGGTACCGAGGAGATCTGCC  
 GCC**CGATCGCC**

ATGACCATGGTTGACACAGAGATGCCATTCTGGCCACCAACTTTGGGATCAGCTCCGTGGATCTCTCCG  
 TAATGGAAGACCACTCCCACTCCTTTGATATCAAGCCCTCACTACTGTTGACTTCTCCAGCATTCTAC  
 TCCACATTACGAAGACATTCCATTACACAAGAACAGATCCAGTGGTTGCAGATTACAAGTATGACCTGAAA  
 CTTCAAGAGTACCAAAGTGAATCAAAGTGGAGCCTGCATCTCCACCTATTATTCTGAGAAGACTCAGC  
 TCTACAATAAGCCTCATGAAGAGCCTTCCAACCTCATGGCAATTGAATGTCGTGTCTGTGGAGATAA  
 AGCTTCTGGATTTCACTATGGAGTTCATGCTTGTGAAGGATGCAAGGGTTTCTCCGGAGAACAATCAGA  
 TTGAAGCTTATCTATGACAGATGTGATCTTAAGTGTGGATCCACAAAAAAGTAGAAAATAATGTCAGT  
 ACTGTCGGTTTCAGAAAATGCCTTGCAGTGGGATGTCTCATAATGCCATCAGGTTTGGGCGGATGCCACA  
 GGCCGAGAAGGAGAAGCTGTTGGCGGAGATCTCCAGTGATATCGACCAGCTGAATCCAGAGTCCGCTGAC  
 CTCGGGGCCCTGGCAAAACATTTGTATGACTCATACATAAAGTCCTTCCGCTGACCAAAAGCAAAGCGA  
 GGGCGATCTTGACAGAAAGACAACAGACAAATACCATTTCGTTATCTATGACATGAATTCCTTAATGAT  
 GGGAGAAGATAAAATCAAGTTCAAACACATCACCCCTGCAGGAGCAGAGCAAAGAGGTGGCCATCCGC  
 ATCTTTAGGGCTGCCAGTTTCGCTCCGTGGAGGCTGTGCAGGAGATCACAGAGTATGCCAAAAGCATT  
 CTGGTTTTGTAATCTTGACTTGAACGACCAAGTAACTCTCTCAAATATGGAGTCCACGAGATCATTTA  
 CACAATGCTGGCTCCTTGATGAATAAAGATGGGTTCTCATATCCGAGGGCCAAGGCTTCATGACAAGG  
 GAGTTTCTAAAGAGCCTGCGAAAGCCTTTTGGTGACTTTATGGAGCCCAAGTTTGAGTTTGTGTGAAGT  
 TCAATGCACCTGGAATTAGATGACAGCGACTTGGCAATATTTATGCTGTCATTATTCTCAGTGGAGCGG  
 CCCAGGTTTGTGAATGTGAAGCCATTGAAGACATTCAAGACAACCTGCTACAAGCCCTGGAGCTCCAG  
 CTGAAGCTGAACCACCCTGAGTCTCACAGCTGTTTGCCAAGCTGCTCCAGAAAATGACAGACCTCAGAC  
 AGATTGTCACGGAACACGTGCAGCTACTGCAGGTGATCAAGAAGACGGAGACAGACATGAGTCTTACCC  
 GCTCCTGCAGGAGATCTACAAGACTTGTAC

**ACGCGT**ACGCGGCCGCTCGAGCAGAACTCATCTCAGAAGAGGATCTGGCAGCAATGATATCCTGGATT  
 ACAAGGATGACGACGATAAGGTTTAA

**Protein Sequence:**

>RC212449 protein sequence  
 Red=Cloning site Green=Tags(s)

MTMVDTEMPFWPTNFGISSVDLSVMEDHSHSFDIKPFTTVDFSSISTPHYEDIPFTRTPVVDYKYDLK  
 LQEYQSAIKVEPASPPYYSEKTQLYNKPHEEPSNSLMAIECRVCGDKASGFHYGVHACEGCKGFFRRTIR  
 LKLIYDRCDLNCRIHKSRNKCYCRFQKCLAVGMSHNAIRFGRMPQAEKEKLLAEISSDIDQLNPESAD  
 LRALAKHLYDSYIKSFPLTKAKARAILTGKTTDKSPFVIYDMNSLMMGEDKIKFKHITPLQEQSKEVAIR  
 IFQGCQFRSVEAVQEITEYAKSIPGFVNLDLNDQVTLKYGVEIITYMLASLMNKDGLVISEGQGFMTRE  
 EFLKSLRKPFGDFMEPKFEFAVKFNALELDDSLAIFIAVIIISGDRPGLLNPKPIEDIQDNLQALELQ  
 LKLNHPRESSQLFAKLLQKMTDLRQIVTEHVQLLQVIKKTETDMSLHPLLQEIYKDLV

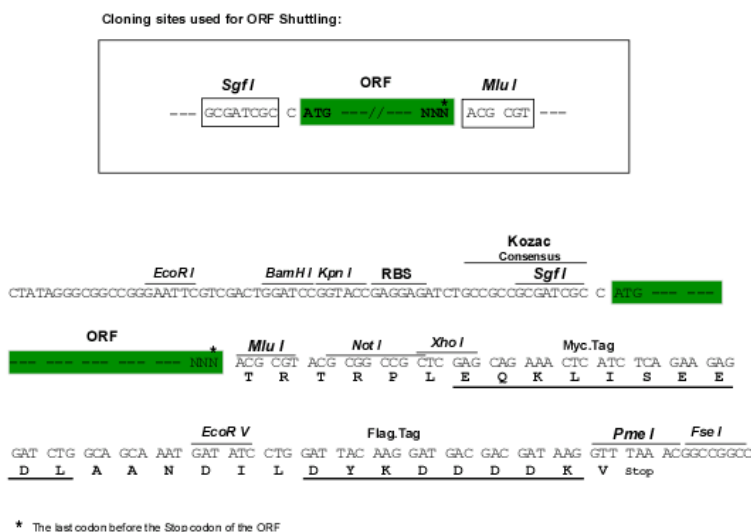
**TR**TRPLEQKLISEEDLAANDILDYKDDDDKV

**Chromatograms:**

[https://cdn.origene.com/chromatograms/mk6271\\_a06.zip](https://cdn.origene.com/chromatograms/mk6271_a06.zip)

**Restriction Sites:**

Sgfl-MluI

**Cloning Scheme:**


**ACCN:** NM\_005037

**ORF Size:** 1431 bp

**OTI Disclaimer:** The molecular sequence of this clone aligns with the gene accession number as a point of reference only. However, individual transcript sequences of the same gene can differ through naturally occurring variations (e.g. polymorphisms), each with its own valid existence. This clone is substantially in agreement with the reference, but a complete review of all prevailing variants is recommended prior to use. [More info](#)

**OTI Annotation:** This clone was engineered to express the complete ORF with an expression tag. Expression varies depending on the nature of the gene.

**Components:** The ORF clone is ion-exchange column purified and shipped in a 2D barcoded Matrix tube containing 10ug of transfection-ready, dried plasmid DNA (reconstitute with 100 ul of water).

**Reconstitution Method:**

1. Centrifuge at 5,000xg for 5min.
2. Carefully open the tube and add 100ul of sterile water to dissolve the DNA.
3. Close the tube and incubate for 10 minutes at room temperature.
4. Briefly vortex the tube and then do a quick spin (less than 5000xg) to concentrate the liquid at the bottom.
5. Store the suspended plasmid at -20°C. The DNA is stable for at least one year from date of shipping when stored at -20°C.

**RefSeq:** [NM\\_005037.6](#)

**RefSeq Size:** 1818 bp

**RefSeq ORF:** 1428 bp

**Locus ID:** 5468

**UniProt ID:** [P37231](#)

**Cytogenetics:** 3p25.2

**Domains:** HOLI, zf-C4

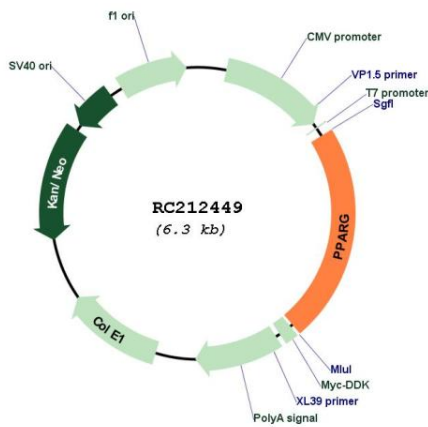
**Protein Families:** Druggable Genome, Nuclear Hormone Receptor, Transcription Factors

**Protein Pathways:** Huntington's disease, Pathways in cancer, PPAR signaling pathway, Thyroid cancer

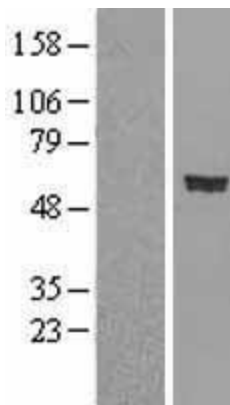
**MW:** 54.7 kDa

**Gene Summary:** This gene encodes a member of the peroxisome proliferator-activated receptor (PPAR) subfamily of nuclear receptors. PPARs form heterodimers with retinoid X receptors (RXRs) and these heterodimers regulate transcription of various genes. Three subtypes of PPARs are known: PPAR-alpha, PPAR-delta, and PPAR-gamma. The protein encoded by this gene is PPAR-gamma and is a regulator of adipocyte differentiation. Additionally, PPAR-gamma has been implicated in the pathology of numerous diseases including obesity, diabetes, atherosclerosis and cancer. Alternatively spliced transcript variants that encode different isoforms have been described. [provided by RefSeq, Jul 2008]

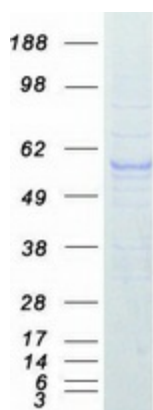
**Product images:**



Circular map for RC212449



Western blot validation of overexpression lysate (Cat# [LY417568]) using anti-DDK antibody (Cat# [TA50011-100]). Left: Cell lysates from untransfected HEK293T cells; Right: Cell lysates from HEK293T cells transfected with RC212449 using transfection reagent MegaTran 2.0 (Cat# [TT210002]).



Coomassie blue staining of purified PPARG protein (Cat# [TP312449]). The protein was produced from HEK293T cells transfected with PPARG cDNA clone (Cat# RC212449) using MegaTran 2.0 (Cat# [TT210002]).