

Product datasheet for **RC212447**

NLN (NM_020726) Human Tagged ORF Clone

Product data:

Product Type:	Expression Plasmids
Product Name:	NLN (NM_020726) Human Tagged ORF Clone
Tag:	Myc-DDK
Symbol:	NLN
Synonyms:	AGTBP; EP24.16; MEP; MOP
Mammalian Cell Selection:	Neomycin
Vector:	pCMV6-Entry (PS100001)
E. coli Selection:	Kanamycin (25 ug/mL)



[View online »](#)

ORF Nucleotide
Sequence:

>RC212447 representing NM_020726
Red=Cloning site Blue=ORF Green=Tags(s)

TTTTGTAATACGACTCACTATAGGGCGGCCGGAATTCGTCGACTGGATCCGGTACCGAGGAGATCTGCC
GCCCGCATCGCC

ATGATCGCCCCGTGCCTTTTGGCTGTGCGAAGCCTCCGCAGAGTTGGTGGTTCCAGATTCTACTCAGAA
TGACGTTAGGAAGAGAAGTGATGTCTCCTTCCAGGCAATGTCTTCTATCTGTGGCTGGCAGAAATGT
TTTAAGATGGGATCTTTCACCAGAGCAAATTAACAAGAAGTACGAGGAGCTCATTGTGCAGACCAAACAG
GTGTACGATGCTGTTGGAATGCTCGGTATTGAGGAAGTAACTTACGAGAAGTGTCTGCAGGCACTGGCAG
ATGTAGAAGTAAAGTATATAGTGGAAAGGACCATGCTAGACTTTCCCGCATGTATCCTCTGACAAAGA
AGTACGAGCAGCAAGTACAGAAGCAGACAAAAGACTTTCTCGTTTTGATATTGAGATGAGCATGAGAGGA
GATATATTTGAGAGAATTGTTTCATTACAGGAAACCTGTGATCTGGGGAAGATAAAACCTGAGGCCAGAC
GATACTTGAAAAGTCAATTAATGGGAAAAGAAATGGGCTCCATCTTCTGAACAAGTACAGAAATGA
AATCAAAATCAATGAAGAAAAGAATGAGTGAGCTATGTATTGATTTAACAAAAACCTCAATGAGGATGAT
ACCTTCCTTGTATTTTCCAAGGCTGAACCTGGTGTCTTCTCTGATGATTTTCATTGACAGTTTAGAAAAGA
CAGATGATGACAAGTATAAAATACCTTAAATATCCACACTATTTCCCTGTGATGAAGAAATGTTGTAT
CCCTGAAACCAGAAGAAGGATGGAAATGGCTTTTAAACAAGGTGCAAAGAGGAAAACACCAATATTTTG
CAGCAGCTACTCCCACTGCGAACCAAGGTGGCCAACTACTCGGTTATAGCACACATGCTGACTTCGTCC
TTGAAATGAACACTGCAAAGAGCACAAGCCGCTAACAGCCTTTCTAGATGATTTAAGCCAGAAGTTAA
ACCCTTGGGTGAAGCAGAACGAGAGTTTATTTGAATTTGAAGAAAAGGAATGCAAAGACAGGGGTTTT
GAATATGATGGGAAAATCAATGCCTGGGATCTATATTACTACATGACTCAGACAGAGGAACTCAAGTATT
CCATAGACCAAGAGTTCCTCAAGGAATACTTCCCAATTGAGGTGGTCACTGAAGGCTTGTGAACACCTA
CCAGGAGTTGTTGGGACTTTCATTTGAACAAATGACAGATGCTCATGTTTGAACAAGAGTGTACACTT
TATACTGTGAAGGATAAAGCTACAGGAGAAGTATTGGGACAGTTCTATTTGGACCTCTATCCAAGGGAAG
GAAAATACAATCATGCGGCCTGCTTCGGTCTCCAGCCTGGCTGCCTTCTGCCTGATGGAAGCCGGATGAT
GGCAGTGGCTGCCCTCGTGGTGAACCTTCTCACAGCCAGTGGCAGGTCGTCCCTCTCTCTGAGACACGAC
GAGGTGAGGACTTACTTTCATGAGTTTGGTCACGTGATGCATCAGATTTGTGCACAGACTGATTTTGCAC
GATTTAGCGGAACAAATGTGAAACTGACTTTGTAGAGGTGCCATCGCAAATGCTTGAAAATTTGGTGTG
GGACGTCGATTCCTCCGAAGATTGTCAAACATTATAAAGATGGAAGCCCTATTGCAGACGATCTGCTT
GAAAACTTGTGCTTCTAGGCTGGTCAACACAGGTCTTCTGACCCTGCGCCAGATTGTTTTGAGCAAAG
TTGATCAGTCTTTCATACCAACACATCGCTGGATGCTGCAAGTGAATATGCCAAATACTGCTCAGAAAT
ATTAGGAGTTGCAGCTACTCCAGGCACAAATATGCCAGCTACCTTTGGACATTTGGCAGGGGGATACGAT
GGCCAATATTATGGATATCTTTGGAGTGAAGTATTTCCATGGATATGTTTTACAGCTGTTTTAAAAAG
AAGGGATAATGAATCCAGAGGTTGGAATGAAATACAGAAACCTAATCCTGAAACCTGGGGATCTCTGGA
CGGCATGGACATGCTCCACAATTTCTTGAACGTGAGCCAAACAAAAAGCGTTCCTAATGAGTAGAGGC
CTGCATGCTCCG

ACGCGTACGCGGCCGCTCGAGCAGAACTCATCTCAGAAGAGGATCTGGCAGCAAATGATATCTGGATT
ACAAGGATGACGACGATAAGGTTTAA

Protein Sequence: >RC212447 representing NM_020726
 Red=Cloning site Green=Tags(s)

MIARCLLAVRSLRRVGGSRILLRMTLGREVMSPLQAMSSYTVAGRNVLRWDL SPEQIKTRTEELIVQTKQ
 VYDAVGM LGIEEVTYENCLQALADVEVKYIVERTMLDFPQHVSDDKEVRAASTEADKRLSRFDIEMSMRG
 DIFERIVHLQETCDL GKIKPEARRYLEKSIKMGKRNLHLPEQVQNEIKSMKKRMSEL CIDFNKNLNEDD
 TFLVFSKAELGALPDDFIDSLEKTD DDKYKITLKYPHYFPVMKKCCIPETRRRMEMAFNTRCKEENT IIL
 QQLLPLRTKVAKLLGYSTHAD FVLEMNTAKSTSRVTAFLDDL SQKLKPLGEAEREFILNLKKKECKDRGF
 EYDGKINAWDLYYMTQTEELKYSIDQEF LKEYFPIEVVTEGLLNTYQELLGLSFEQMTDAHVNKSVTL
 YTVKDKATGEVLGQFYLDLYPREGKYNHAACFGLQPGCLLPDGSRMMAVAALVVNFSQPVAGRPSLLRHD
 EVRTYFHEFGHVMHQICAQ TDFARFSGTNVETDFVEVPSQMLENWWVDVSLRRLSKHYKDGSP IADLL
 EKLVASRLVNTGLLTLRQIVLSKVDQSLHTNTSLDAASEYAKYCSEILGVAATPGTNMPATFGHLAGGYD
 GQYYGYLWSEVFSMDMFYSCFKKEGIMNPEVGMKYRNLILKPGGSLDGMDMLHNFLKREP NQKAF LMSRG
 LHAP

TRTRPLEQKLI SEEDLAANDILDYKDDDDKV

Chromatograms: https://cdn.origene.com/chromatograms/mk6237_e08.zip

Restriction Sites: SgfI-MluI

Cloning Scheme:

Cloning sites used for ORF Shuttling:



* The last codon before the Stop codon of the ORF

ACCN: NM_020726

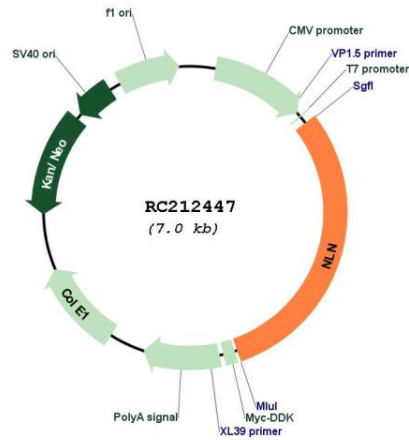
ORF Size: 2112 bp

OTI Disclaimer: The molecular sequence of this clone aligns with the gene accession number as a point of reference only. However, individual transcript sequences of the same gene can differ through naturally occurring variations (e.g. polymorphisms), each with its own valid existence. This clone is substantially in agreement with the reference, but a complete review of all prevailing variants is recommended prior to use. [More info](#)

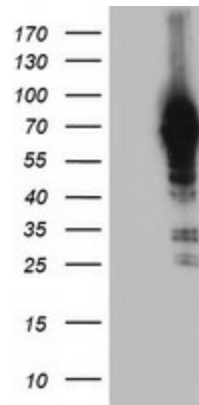
OTI Annotation: This clone was engineered to express the complete ORF with an expression tag. Expression varies depending on the nature of the gene.

Components:	The ORF clone is ion-exchange column purified and shipped in a 2D barcoded Matrix tube containing 10ug of transfection-ready, dried plasmid DNA (reconstitute with 100 ul of water).
Reconstitution Method:	<ol style="list-style-type: none">1. Centrifuge at 5,000xg for 5min.2. Carefully open the tube and add 100ul of sterile water to dissolve the DNA.3. Close the tube and incubate for 10 minutes at room temperature.4. Briefly vortex the tube and then do a quick spin (less than 5000xg) to concentrate the liquid at the bottom.5. Store the suspended plasmid at -20°C. The DNA is stable for at least one year from date of shipping when stored at -20°C.
RefSeq:	<u>NM_020726.5</u>
RefSeq Size:	2882 bp
RefSeq ORF:	2115 bp
Locus ID:	57486
UniProt ID:	<u>Q9BYT8</u>
Cytogenetics:	5q12.3
Domains:	Peptidase_M3
Protein Families:	Druggable Genome, Protease
Protein Pathways:	Renin-angiotensin system
MW:	80.5 kDa
Gene Summary:	This gene encodes a member of the metallopeptidase M3 protein family that cleaves neurotensin at the Pro10-Tyr11 bond, leading to the formation of neurotensin(1-10) and neurotensin(11-13). The encoded protein is likely involved in the termination of the neurotensinergic signal in the central nervous system and in the gastrointestinal tract. [provided by RefSeq, Jun 2010]

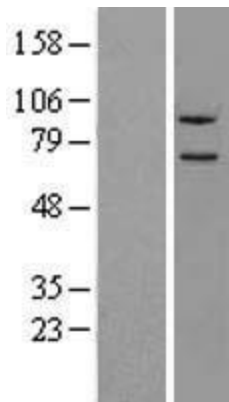
Product images:



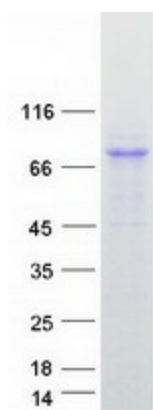
Circular map for RC212447



HEK293T cells were transfected with the pCMV6-ENTRY control (Cat# [PS100001], Left lane) or pCMV6-ENTRY NLN (Cat# RC212447, Right lane) cDNA for 48 hrs and lysed. Equivalent amounts of cell lysates (5 ug per lane) were separated by SDS-PAGE and immunoblotted with anti-NLN(Cat# [TA504178]). Positive lysates [LY412353] (100ug) and [LC412353] (20ug) can be purchased separately from OriGene.



Western blot validation of overexpression lysate (Cat# [LY412353]) using anti-DDK antibody (Cat# [TA50011-100]). Left: Cell lysates from untransfected HEK293T cells; Right: Cell lysates from HEK293T cells transfected with RC212447 using transfection reagent MegaTran 2.0 (Cat# [TT210002]).



Coomassie blue staining of purified NLN protein (Cat# [TP312447]). The protein was produced from HEK293T cells transfected with NLN cDNA clone (Cat# RC212447) using MegaTran 2.0 (Cat# [TT210002]).